

Converting Colors

Decimal(13742507)

Have a look what the booklet for
Decimal(13742507) contains.

Decimal(13742507)	3
<i>Conversions</i>	4
<i>Details</i>	6
<i>Harmonies</i>	11
<i>Previews</i>	23
<i>Color Blindness Simulation</i>	26
<i>CSS Examples</i>	29

Color

Decimal(13742507)

Conversions

Conversions Part 1

Format	Color
Hex	D1B1AB
RGB	209, 177, 171
RGB Percent	82%, 69%, 67%
CMY	0.1804, 0.3059, 0.3294
CMYK	0.00, 0.15, 0.18, 0.18
HSL	9°, 29%, 75%
HSV	9°, 18%, 82%
XYZ	49.3673, 47.9399, 45.1795
YIQ	185.8840, 20.9980, 4.9180

Conversions

Conversions Part 2

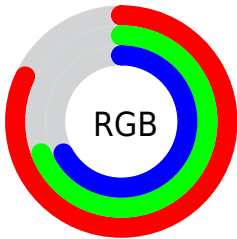
Format	Color
RYB	209, 178, 171
Decimal	13742507
CIELab	74.79, 10.59, 7.36
CIElCh	75, 12.898, 34.774
Yxy	47.9399, 0.3465, 0.3365
Android (android.graphics.Color)	4291932587 (0xFFD1B1AB)
YUV	185.8840, -7.3378, 20.2727
Hunter-Lab	69.2386, 6.1034, 9.7792

Details

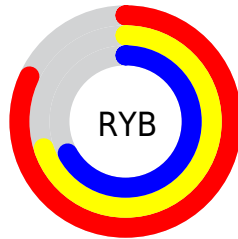
The Decimal color **13742507** is a light color, and the websafe version is hex **CC9999**. A complement of this color would be **11258833**, and the grayscale version is **12237498**.

A 20% lighter version of the original color is **16771554**, and **10124407** is the 20% darker color. If you saturate the color by 10%, you get **13737878**, and if you desaturate by 10%, it is **13747136**.

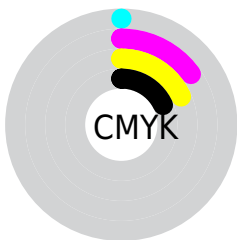
Distribution



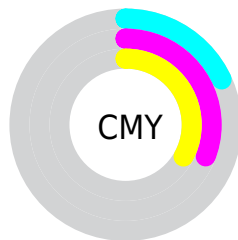
- Red (82%)
- Green (69%)
- Blue (67%)



- Red (82%)
- Yellow (70%)
- Blue (67%)



- Cyan (0%)
- Magenta (15%)
- Yellow (18%)
- Black (18%)



- Cyan (18%)
- Magenta (31%)
- Yellow (33%)

Brightness & Saturation Gradients

These gradients show how the Decimal color 13742507 changes by changing the brightness by 10 percent. The first figure shows a shift by +10% for each color and the second figure -10%.

Similar to the brightness gradients but the following saturation gradients show a change of the Decimal color 13742507 by changing the saturation by 10% instead.

 13742507

 13742507

16777215

 11900561

 16771554

 10124407

 8414046

 6703943

 5125424

 3546907

 2230528

 0

 13742507

 13742507

 13737878

 13747136

 13733505

 13751509

 13728876

 13756138

 13724503

 13760511

 13719874

 13762559

 13715246

 13710873

 13706244

 13705472

Harmonies

Analogous

The Analogous color harmony consists of three colors that are next to each other on the color wheel.



13742262



13742507



13350051

Triad

The Triadic color harmony groups three colors that are evenly spaced from another and form a triangle on the color wheel.



13742507



10862254



11450575

Complementary

The Complementary color scheme is a pair of colors which are on the opposite of each other on the color wheel.



13742507



11258833

Split Complementary

Split-complementary colors differ from the complementary color scheme. The scheme consists of three colors, the original color and two neighbors of the complement color.



10599629



13742507



10272698

Square

The Square scheme is like the rectangle color scheme, but the four colors are evenly spaced on the color wheel.



13742507



11713444



10141381



12432588

Rectangle

The Rectangle color scheme consists of four colors that form a rectangle on the color wheel.



13742507



12891809



10141381



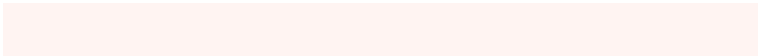
11123407

Sweetspot

The Sweet Spot groups the original color and five complimentary colors.



13742507



16774386



13741003



8419704



0



8421504

Same Dimension

The Same Dimension uses a secret algorithm to generate beautiful new colors.



13742507



16765127



13747371



6905950



11016960



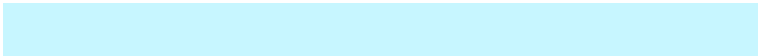
2688512

Inverse Universe

The Inverse Universe completely reimagines the original color for something new.



11258833



13104895



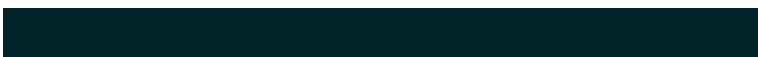
11253969



6186857



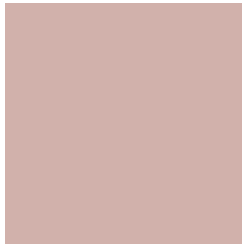
36520



8745

Previews

White Background



This preview shows how the Decimal color 13742507 looks on a white background.

Color Contrast Check

Large Text (above 18pt) WCAG AA × Fail

Any Text WCAG AA × Fail

Large Text (above 18pt) WCAG AAA × Fail

Any Text WCAG AAA × Fail

Black Background



This preview shows how the Decimal color 13742507 looks on a black background.

Color Contrast Check

Large Text (above 18pt) WCAG AA ✓ Pass

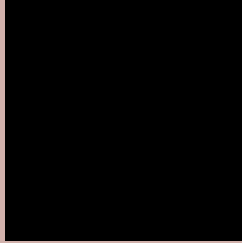
Any Text WCAG AA ✓ Pass

Large Text (above 18pt) WCAG AAA ✓ Pass

Any Text WCAG AAA ✓ Pass

If you want to check with other color combinations, try the [Color Contrast Checker](#).

Decimal 13742507 Background



This preview shows how black text looks on a background with the Decimal color 13742507.



This preview shows how white text looks on a background with the Decimal color 13742507.

Color Blindness Simulation

Color vision deficiency is a very complex topic, and I could not describe the different causes any better than Wikipedia does, so if you want to learn more, you should check out their [article about color blindness](#).

Dichromacy





Tritanopia
13872828

Trichromacy



Original Color
13742507

Protanomaly
12957102

Deuteranomaly
13677227

Tritanomaly
13807542

Monochromacy



Original Color
13742507

Achromatopsia
12237498

Achromatomaly
12761013

CSS Examples

Text

The CSS property to change the color of the text to Decimal 13742507 is called "color". The color property can be set on classes, ids or directly on the HTML element.

This example shows how text in the color #D1B1AB looks like.

```
.text, #text, p{  
    color:#D1B1AB  
}
```

If you want to add a text shadow in that color use the text-shadow property, you can generate a text shadow directly with our [CSS Text Shadow Generator](#).

Here you see how black text with a 4 pixel #D1B1AB colored shadow looks like.

```
.shadow{ text-shadow: 4px 4px 2px #D1B1AB
}
```

Border

The CSS property to change the border of an element to Decimal 13742507 is called "border". The border property can be set on classes, ids or directly on the HTML element.

This example shows the color as border, it can be applied via the CSS property "border" or "border-color".

```
.border, #border, table{ border:4px solid
#D1B1AB }
```

If only the border color should be changed use the property `border-color`.

```
.border{ border-color:#D1B1AB }
```

If you want to add a box shadow in that color use:

Here you see how a box with a 4 pixel #D1B1AB colored shadow looks like.

```
.boxshadow{ -moz-box-shadow:4px 4px 4px  
4px #D1B1AB; -webkit-box-shadow:4px 4px  
4px 4px #D1B1AB; box-shadow:4px 4px 4px  
4px #D1B1AB }
```

Background

The CSS property to change the background color of an element to Decimal 13742507 is called "background". The background property can be set on classes, ids or directly on the HTML element.

```
.background, #background, body{  
background:#D1B1AB }
```

If only the background color should be changed can be used:

```
.background{ background-color:#D1B1AB }
```

This example shows the color as background, it is applied via the CSS property "background".

To optimize and compress your CSS code, you can use our [online CSS compressor and optimizer](#) based on csstidy. If you want to create a linear or radial gradient as background or border, check our [CSS Gradient Generator](#).

Hey! You found this booklet interesting? Support Converting Colors with the new Membership Option!

The pro membership hides all ads, plus gives you double the colors in the color bucket, and more awesome pro features!

[Learn more, Memberships starting at \\$2.50/m!](#)

**Follow me
on Twitter!**

@ConvertingColor