

Converting Colors

Decimal(13743771)

Have a look what the booklet for
Decimal(13743771) contains.

Decimal(13743771)	3
<i>Conversions</i>	4
<i>Details</i>	6
<i>Harmonies</i>	11
<i>Previews</i>	23
<i>Color Blindness Simulation</i>	26
<i>CSS Examples</i>	29

Color

Decimal(13743771)

Conversions

Conversions Part 1

Format	Color
Hex	D1B69B
RGB	209, 182, 155
RGB Percent	82%, 71%, 61%
CMY	0.1804, 0.2863, 0.3922
CMYK	0.00, 0.13, 0.26, 0.18
HSL	30°, 37%, 71%
HSV	30°, 26%, 82%
XYZ	48.9388, 49.3778, 37.9619
YIQ	186.9950, 24.7590, -2.6730

Conversions

Conversions Part 2

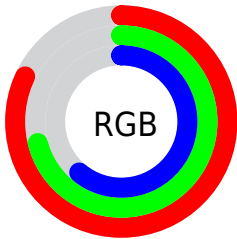
Format	Color
R _Y B	209, 209, 155
Decimal	13743771
CIE Lab	75.69, 5.55, 17.31
CIE LCh	76, 18.184, 72.214
Yxy	49.3778, 0.3591, 0.3623
Android (android.graphics.Color)	4291933851 (0xFFD1B69B)
YUV	186.9950, -15.7735, 19.2984
Hunter-Lab	70.2693, 1.3445, 17.1581

Details

The Decimal color **13743771** is a light color, and the websafe version is hex **CCCC99**. A complement of this color would be **10204881**, and the grayscale version is **12303291**.

A 20% lighter version of the original color is **16772818**, and **10125672** is the 20% darker color. If you saturate the color by 10%, you get **13741190**, and if you desaturate by 10%, it is **13746352**.

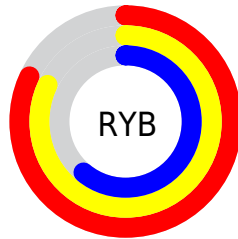
Distribution



Red (82%)

Green (71%)

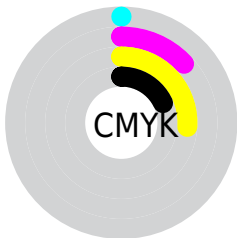
Blue (61%)



Red (82%)

Yellow (82%)

Blue (61%)

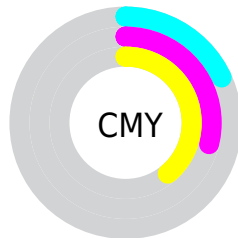


Cyan (0%)

Magenta (13%)

Yellow (26%)

Black (18%)



Cyan (18%)

Magenta (29%)

Yellow (39%)

Brightness & Saturation Gradients

These gradients show how the Decimal color 13743771 changes by changing the brightness by 10 percent. The first figure shows a shift by +10% for each color and the second figure -10%.

Similar to the brightness gradients but the following saturation gradients show a change of the Decimal color 13743771 by changing the saturation by 10% instead.

 13743771

 13743771

16777215

 11901825

 16772818

 10125672


 16777198

 8349776

 6705209

 5060899

 3482638

 2100992

 0

 13743771

 13743771

 13741190

 13746352

 13738353

 13749189

 13735772

 13751770

 13732935

 13754607

 13730355

 13757183

 13727518

 13759999

 13724937

 13762559

 13723904

Harmonies

Analogous

The Analogous color harmony consists of three colors that are next to each other on the color wheel.



14463397



13743771



12696730

Triad

The Triadic color harmony groups three colors that are evenly spaced from another and form a triangle on the color wheel.



13743771



9487553



13022419

Complementary

The Complementary color scheme is a pair of colors which are on the opposite of each other on the color wheel.



13743771



10204881

Split Complementary

Split-complementary colors differ from the complementary color scheme. The scheme consists of three colors, the original color and two neighbors of the complement color.



11647707



13743771



9421776

Square

The Square scheme is like the rectangle color scheme, but the four colors are evenly spaced on the color wheel.



13743771



10208176



10272730



14069957

Rectangle

The Rectangle color scheme consists of four colors that form a rectangle on the color wheel.



13743771



11845534



10272730



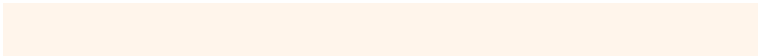
12564183

Sweetspot

The Sweet Spot groups the original color and five complimentary colors.



13743771



16774635



13736886



8419699



0



8421504

Same Dimension

The Same Dimension uses a secret algorithm to generate beautiful new colors.



13743771



16766896



13750683



6906718



11031552



2692096

Inverse Universe

The Inverse Universe completely reimagines the original color for something new.



10204881



11589631



10197969



6185833



21672



5161

Previews

White Background



This preview shows how the Decimal color 13743771 looks on a white background.

Color Contrast Check

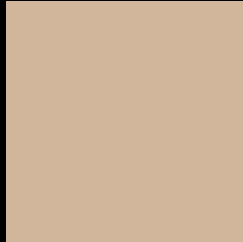
Large Text (above 18pt) WCAG AA × Fail

Any Text WCAG AA × Fail

Large Text (above 18pt) WCAG AAA × Fail

Any Text WCAG AAA × Fail

Black Background



This preview shows how the Decimal color 13743771 looks on a black background.

Color Contrast Check

Large Text (above 18pt) WCAG AA ✓ Pass

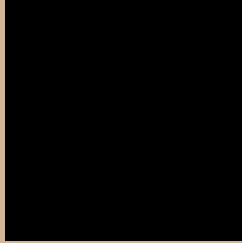
Any Text WCAG AA ✓ Pass

Large Text (above 18pt) WCAG AAA ✓ Pass

Any Text WCAG AAA ✓ Pass

If you want to check with other color combinations, try the [Color Contrast Checker](#).

Decimal 13743771 Background



This preview shows how black text looks on a background with the Decimal color 13743771.



This preview shows how white text looks on a background with the Decimal color 13743771.

Color Blindness Simulation

Color vision deficiency is a very complex topic, and I could not describe the different causes any better than Wikipedia does, so if you want to learn more, you should check out their [article about color blindness](#).

Dichromacy



Original Color
13743771

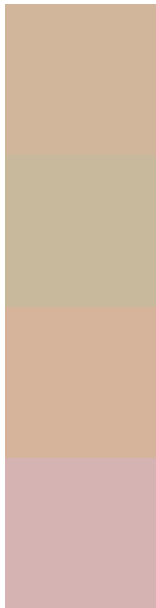
Protanopia
12958365

Deuteranopia
14201755



Tritanopia
14004671

Trichromacy



Original Color
13743771

Protanomaly
13220252

Deuteranomaly
14005403

Tritanomaly
13939634

Monochromacy



Original Color
13743771

Achromatopsia
12303291

Achromatomaly
12827055

CSS Examples

Text

The CSS property to change the color of the text to Decimal 13743771 is called "color". The color property can be set on classes, ids or directly on the HTML element.

This example shows how text in the color #D1B69B looks like.

```
.text, #text, p{  
    color:#D1B69B  
}
```

If you want to add a text shadow in that color use the text-shadow property, you can generate a text shadow directly with our [CSS Text Shadow Generator](#).

Here you see how black text with a 4 pixel #D1B69B colored shadow looks like.

```
.shadow{ text-shadow: 4px 4px 2px #D1B69B
}
```

Border

The CSS property to change the border of an element to Decimal 13743771 is called "border". The border property can be set on classes, ids or directly on the HTML element.

This example shows the color as border, it can be applied via the CSS property "border" or "border-color".

```
.border, #border, table{ border:4px solid
#D1B69B }
```

If only the border color should be changed use the property `border-color`.

```
.border{ border-color:#D1B69B }
```

If you want to add a box shadow in that color use:

Here you see how a box with a 4 pixel #D1B69B colored shadow looks like.

```
.boxshadow{ -moz-box-shadow:4px 4px 4px  
4px #D1B69B; -webkit-box-shadow:4px 4px  
4px 4px #D1B69B; box-shadow:4px 4px 4px  
4px #D1B69B }
```

Background

The CSS property to change the background color of an element to Decimal 13743771 is called "background". The background property can be set on classes, ids or directly on the HTML element.

```
.background, #background, body{  
background:#D1B69B }
```

If only the background color should be changed can be used:

```
.background{ background-color:#D1B69B }
```

This example shows the color as background, it is applied via the CSS property "background".

To optimize and compress your CSS code, you can use our [online CSS compressor and optimizer](#) based on csstidy. If you want to create a linear or radial gradient as background or border, check our [CSS Gradient Generator](#).

Hey! You found this booklet interesting? Support Converting Colors with the new Membership Option!

The pro membership hides all ads, plus gives you double the colors in the color bucket, and more awesome pro features!

[Learn more, Memberships starting at \\$2.50/m!](#)

**Follow me
on Twitter!**

@ConvertingColor