

Converting Colors

Decimal(13744059)

Have a look what the booklet for
Decimal(13744059) contains.

Decimal(13744059)	3
<i>Conversions</i>	4
<i>Details</i>	6
<i>Harmonies</i>	11
<i>Previews</i>	23
<i>Color Blindness Simulation</i>	26
<i>CSS Examples</i>	29

Color

Decimal(13744059)

Conversions

Conversions Part 1

Format	Color
Hex	D1B7BB
RGB	209, 183, 187
RGB Percent	82%, 72%, 73%
CMY	0.1804, 0.2824, 0.2667
CMYK	0.00, 0.12, 0.11, 0.18
HSL	351°, 22%, 77%
HSV	351°, 12%, 82%
XYZ	52.1976, 51.0101, 54.1085
YIQ	191.2300, 14.2120, 6.7560

Conversions

Conversions Part 2

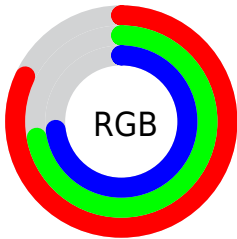
Format	Color
R _Y B	209, 183, 187
Decimal	13744059
CIE Lab	76.69, 9.95, 1.39
CIE LCh	77, 10.047, 7.930
Yxy	51.0101, 0.3318, 0.3243
Android (android.graphics.Color)	4291934139 (0xFFD1B7BB)
YUV	191.2300, -2.0854, 15.5843
Hunter-Lab	71.4214, 5.4676, 5.0771

Details

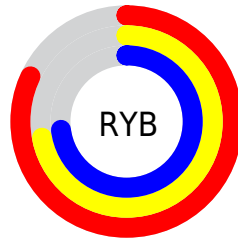
The Decimal color **13744059** is a light color, and the websafe version is hex **CCCCCC**. A complement of this color would be **12046797**, and the grayscale version is **12566463**.

A 20% lighter version of the original color is **16773107**, and **10125958** is the 20% darker color. If you saturate the color by 10%, you get **13738665**, and if you desaturate by 10%, it is **13749453**.

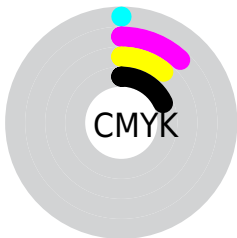
Distribution



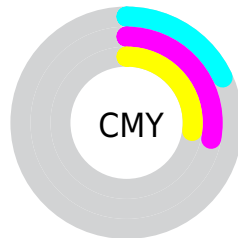
- Red (82%)
- Green (72%)
- Blue (73%)



- Red (82%)
- Yellow (72%)
- Blue (73%)



- Cyan (0%)
- Magenta (12%)
- Yellow (11%)
- Black (18%)



- Cyan (18%)
- Magenta (28%)
- Yellow (27%)

Brightness & Saturation Gradients

These gradients show how the Decimal color 13744059 changes by changing the brightness by 10 percent. The first figure shows a shift by +10% for each color and the second figure -10%.

Similar to the brightness gradients but the following saturation gradients show a change of the Decimal color 13744059 by changing the saturation by 10% instead.

■ 13744059

■ 13744059

16777215

■ 11902112

■ 16773107

■ 10125958

■ 8415597

■ 6771028

■ 5192253

■ 3679272

■ 2232083

■ 0

■ 13744059

■ 13744059

 13738665

 13749453

 13733272

 13754846

 13727878

 13760240

 13722484

 13762559

 13717347

 13711953

 13706559

 13701166

 13697056

Harmonies

Analogous

The Analogous color harmony consists of three colors that are next to each other on the color wheel.



13416644



13744059



13744306

Triad

The Triadic color harmony groups three colors that are evenly spaced from another and form a triangle on the color wheel.



13744059



12107950



11321550

Complementary

The Complementary color scheme is a pair of colors which are on the opposite of each other on the color wheel.



13744059



12046797

Split Complementary

Split-complementary colors differ from the complementary color scheme. The scheme consists of three colors, the original color and two neighbors of the complement color.



10994376



13744059



11453110

Square

The Square scheme is like the rectangle color scheme, but the four colors are evenly spaced on the color wheel.



13744059



12762539



10994623



12041679

Rectangle

The Rectangle color scheme consists of four colors that form a rectangle on the color wheel.



13744059



13547950



10994623



11190733

Sweetspot

The Sweet Spot groups the original color and five complimentary colors.



13744059



16774646



13481937



8419706



0



8421504

Same Dimension

The Same Dimension uses a secret algorithm to generate beautiful new colors.



13744059



16767455



13746359



6905440



11010074



2686982

Inverse Universe

The Inverse Universe completely reimagines the original color for something new.



13744059



16767455



12044497



6905440



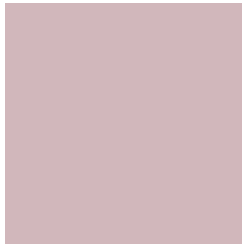
11010074



2686982

Previews

White Background



This preview shows how the Decimal color 13744059 looks on a white background.

Color Contrast Check

Large Text (above 18pt) WCAG AA × Fail

Any Text WCAG AA × Fail

Large Text (above 18pt) WCAG AAA × Fail

Any Text WCAG AAA × Fail

Black Background



This preview shows how the Decimal color 13744059 looks on a black background.

Color Contrast Check

Large Text (above 18pt) WCAG AA ✓ Pass

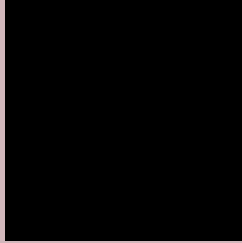
Any Text WCAG AA ✓ Pass

Large Text (above 18pt) WCAG AAA ✓ Pass

Any Text WCAG AAA ✓ Pass

If you want to check with other color combinations, try the [Color Contrast Checker](#).

Decimal 13744059 Background



This preview shows how black text looks on a background with the Decimal color 13744059.



This preview shows how white text looks on a background with the Decimal color 13744059.

Color Blindness Simulation

Color vision deficiency is a very complex topic, and I could not describe the different causes any better than Wikipedia does, so if you want to learn more, you should check out their [article about color blindness](#).

Dichromacy





Tritanopia
13809348

Trichromacy



Original Color
13744059

Protanomaly
13023933

Deuteranomaly
13678523

Tritanomaly
13809345

Monochromacy



Original Color
13744059

Achromatopsia
12566463

Achromatomaly
13024446

CSS Examples

Text

The CSS property to change the color of the text to Decimal 13744059 is called "color". The color property can be set on classes, ids or directly on the HTML element.

This example shows how text in the color #D1B7BB looks like.

```
.text, #text, p{  
    color:#D1B7BB  
}
```

If you want to add a text shadow in that color use the text-shadow property, you can generate a text shadow directly with our [CSS Text Shadow Generator](#).

Here you see how black text with a 4 pixel #D1B7BB colored shadow looks like.

```
.shadow{ text-shadow: 4px 4px 2px #D1B7BB  
}
```

Border

The CSS property to change the border of an element to Decimal 13744059 is called "border". The border property can be set on classes, ids or directly on the HTML element.

This example shows the color as border, it can be applied via the CSS property "border" or "border-color".

```
.border, #border, table{ border:4px solid  
#D1B7BB }
```

If only the border color should be changed use the property `border-color`.

```
.border{ border-color:#D1B7BB }
```

If you want to add a box shadow in that color use:

Here you see how a box with a 4 pixel #D1B7BB colored shadow looks like.

```
.boxshadow{ -moz-box-shadow:4px 4px 4px  
4px #D1B7BB; -webkit-box-shadow:4px 4px  
4px 4px #D1B7BB; box-shadow:4px 4px 4px  
4px #D1B7BB }
```

Background

The CSS property to change the background color of an element to Decimal 13744059 is called "background". The background property can be set on classes, ids or directly on the HTML element.

```
.background, #background, body{  
background:#D1B7BB }
```

If only the background color should be changed can be used:

```
.background{ background-color:#D1B7BB }
```

This example shows the color as background, it is applied via the CSS property "background".

To optimize and compress your CSS code, you can use our [online CSS compressor and optimizer](#) based on csstidy. If you want to create a linear or radial gradient as background or border, check our [CSS Gradient Generator](#).

Hey! You found this booklet interesting? Support Converting Colors with the new Membership Option!

The pro membership hides all ads, plus gives you double the colors in the color bucket, and more awesome pro features!

[Learn more, Memberships starting at \\$2.50/m!](#)

**Follow me
on Twitter!**

@ConvertingColor