

Converting Colors

Decimal(13744068)

Have a look what the booklet for
Decimal(13744068) contains.

Decimal(13744068)	3
<i>Conversions</i>	4
<i>Details</i>	6
<i>Harmonies</i>	11
<i>Previews</i>	23
<i>Color Blindness Simulation</i>	26
<i>CSS Examples</i>	29

Color

Decimal(13744068)

Conversions

Conversions Part 1

Format	Color
Hex	D1B7C4
RGB	209, 183, 196
RGB Percent	82%, 72%, 77%
CMY	0.1804, 0.2824, 0.2314
CMYK	0.00, 0.12, 0.06, 0.18
HSL	330°, 22%, 77%
HSV	330°, 12%, 82%
XYZ	53.1918, 51.4078, 59.3437
YIQ	192.2560, 11.3230, 9.5550

Conversions

Conversions Part 2

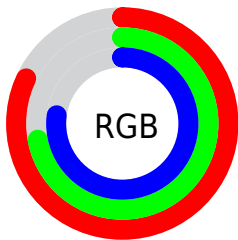
Format	Color
R _Y B	209, 183, 196
Decimal	13744068
CIE Lab	76.93, 11.50, -3.15
CIE LCh	77, 11.923, 344.670
Yxy	51.4078, 0.3245, 0.3136
Android (android.graphics.Color)	4291934148 (0xFFD1B7C4)
YUV	192.2560, 1.8458, 14.6845
Hunter-Lab	71.6992, 6.9508, 1.1166

Details

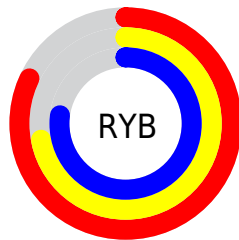
The Decimal color **13744068** is a light color, and the websafe version is hex **CCCCCC**. A complement of this color would be **12046788**, and the grayscale version is **12632256**.

A 20% lighter version of the original color is **16773117**, and **10125966** is the 20% darker color. If you saturate the color by 10%, you get **13738682**, and if you desaturate by 10%, it is **13749454**.

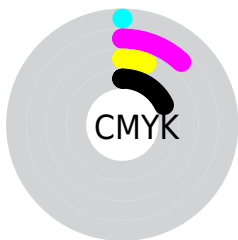
Distribution



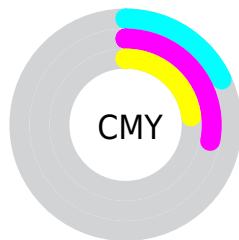
- Red (82%)
- Green (72%)
- Blue (77%)



- Red (82%)
- Yellow (72%)
- Blue (77%)



- Cyan (0%)
- Magenta (12%)
- Yellow (6%)
- Black (18%)



- Cyan (18%)
- Magenta (28%)
- Yellow (23%)

Brightness & Saturation Gradients

These gradients show how the Decimal color 13744068 changes by changing the brightness by 10 percent. The first figure shows a shift by +10% for each color and the second figure -10%.

Similar to the brightness gradients but the following saturation gradients show a change of the Decimal color 13744068 by changing the saturation by 10% instead.

 13744068

 13744068

16777215

 11902121

 16773117

 10125966

 8415605

 6771036

 5192261

 3679278

 2232090

 0

 13744068

 13744068

 13738682

 13749454

 13733295

 13754841

 13727909

 13760227

 13722522

 13762542

 13717392

 13762552

 13712005

 13762559

 13706619

 13701232

 13697129

Harmonies

Analogous

The Analogous color harmony consists of three colors that are next to each other on the color wheel.



13089230



13744068



14071737

Triad

The Triadic color harmony groups three colors that are evenly spaced from another and form a triangle on the color wheel.



13744068



12697513



10798029

Complementary

The Complementary color scheme is a pair of colors which are on the opposite of each other on the color wheel.



13744068



12046788

Split Complementary

Split-complementary colors differ from the complementary color scheme. The scheme consists of three colors, the original color and two neighbors of the complement color.



10732995



13744068



11846318

Square

The Square scheme is like the rectangle color scheme, but the four colors are evenly spaced on the color wheel.



13744068



13482921



11125944



11321811

Rectangle

The Rectangle color scheme consists of four colors that form a rectangle on the color wheel.



13744068



14006194



11125944



10667210

Sweetspot

The Sweet Spot groups the original color and five complimentary colors.



13744068



16774650



12892113



8419708



0



8421504

Same Dimension

The Same Dimension uses a secret algorithm to generate beautiful new colors.



13744068



16767468



13744055



6905443



11010132



2686996

Inverse Universe

The Inverse Universe completely reimagines the original color for something new.



13744068



16767468



12046801



6905443



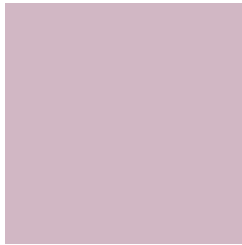
11010132



2686996

Previews

White Background



This preview shows how the Decimal color 13744068 looks on a white background.

Color Contrast Check

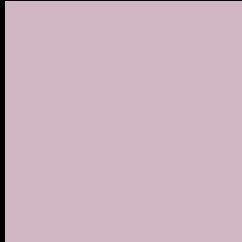
Large Text (above 18pt) WCAG AA × Fail

Any Text WCAG AA × Fail

Large Text (above 18pt) WCAG AAA × Fail

Any Text WCAG AAA × Fail

Black Background



This preview shows how the Decimal color 13744068 looks on a black background.

Color Contrast Check

Large Text (above 18pt) WCAG AA ✓ Pass

Any Text WCAG AA ✓ Pass

Large Text (above 18pt) WCAG AAA ✓ Pass

Any Text WCAG AAA ✓ Pass

If you want to check with other color combinations, try the [Color Contrast Checker](#).

Decimal 13744068 Background



This preview shows how black text looks on a background with the Decimal color 13744068.



This preview shows how white text looks on a background with the Decimal color 13744068.

Color Blindness Simulation

Color vision deficiency is a very complex topic, and I could not describe the different causes any better than Wikipedia does, so if you want to learn more, you should check out their [article about color blindness](#).

Dichromacy



Original Color
13744068

Protanopia
12565960

Deuteranopia
13547716



Tritanopia
13744069

Trichromacy



Original Color
13744068

Protanomaly
13024199

Deuteranomaly
13613252

Tritanomaly
13744069

Monochromacy



Original Color
13744068

Achromatopsia
12632256

Achromatomaly
13024705

CSS Examples

Text

The CSS property to change the color of the text to Decimal 13744068 is called "color". The color property can be set on classes, ids or directly on the HTML element.

This example shows how text in the color #D1B7C4 looks like.

```
.text, #text, p{  
    color:#D1B7C4  
}
```

If you want to add a text shadow in that color use the text-shadow property, you can generate a text shadow directly with our [CSS Text Shadow Generator](#).

Here you see how black text with a 4 pixel #D1B7C4 colored shadow looks like.

```
.shadow{ text-shadow: 4px 4px 2px #D1B7C4
}
```

Border

The CSS property to change the border of an element to Decimal 13744068 is called "border". The border property can be set on classes, ids or directly on the HTML element.

This example shows the color as border, it can be applied via the CSS property "border" or "border-color".

```
.border, #border, table{ border:4px solid
#D1B7C4 }
```

If only the border color should be changed use the property `border-color`.

```
.border{ border-color:#D1B7C4 }
```

If you want to add a box shadow in that color use:

Here you see how a box with a 4 pixel #D1B7C4 colored shadow looks like.

```
.boxshadow{ -moz-box-shadow:4px 4px 4px  
4px #D1B7C4; -webkit-box-shadow:4px 4px  
4px 4px #D1B7C4; box-shadow:4px 4px 4px  
4px #D1B7C4 }
```

Background

The CSS property to change the background color of an element to Decimal 13744068 is called "background". The background property can be set on classes, ids or directly on the HTML element.

```
.background, #background, body{  
background:#D1B7C4 }
```

If only the background color should be changed can be used:

```
.background{ background-color:#D1B7C4 }
```

This example shows the color as background, it is applied via the CSS property "background".

To optimize and compress your CSS code, you can use our [online CSS compressor and optimizer](#) based on csstidy. If you want to create a linear or radial gradient as background or border, check our [CSS Gradient Generator](#).

Hey! You found this booklet interesting? Support Converting Colors with the new Membership Option!

The pro membership hides all ads, plus gives you double the colors in the color bucket, and more awesome pro features!

[Learn more, Memberships starting at \\$2.50/m!](#)

**Follow me
on Twitter!**

@ConvertingColor