

Converting Colors

Decimal(13744574)

Have a look what the booklet for
Decimal(13744574) contains.

Decimal(13744574)	3
<i>Conversions</i>	4
<i>Details</i>	6
<i>Harmonies</i>	11
<i>Previews</i>	23
<i>Color Blindness Simulation</i>	26
<i>CSS Examples</i>	29

Color

Decimal(13744574)

Conversions

Conversions Part 1

Format	Color
Hex	D1B9BE
RGB	209, 185, 190
RGB Percent	82%, 73%, 75%
CMY	0.1804, 0.2745, 0.2549
CMYK	0.00, 0.11, 0.09, 0.18
HSL	348°, 21%, 77%
HSV	348°, 11%, 82%
XYZ	52.9377, 51.9709, 55.9565
YIQ	192.7460, 12.6990, 6.6430

Conversions

Conversions Part 2

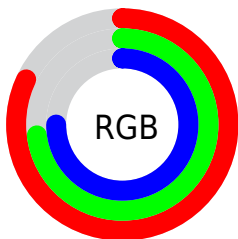
Format	Color
R _Y B	209, 185, 190
Decimal	13744574
CIE Lab	77.26, 9.38, 0.60
CIE LCh	77, 9.404, 3.658
Yxy	51.9709, 0.3291, 0.3231
Android (android.graphics.Color)	4291934654 (0xFFD1B9BE)
YUV	192.7460, -1.3538, 14.2548
Hunter-Lab	72.0909, 4.9170, 4.4431

Details

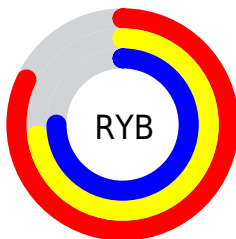
The Decimal color **13744574** is a light color, and the websafe version is hex **CCCCCC**. A complement of this color would be **12177868**, and the grayscale version is **12698049**.

A 20% lighter version of the original color is **16773622**, and **10126473** is the 20% darker color. If you saturate the color by 10%, you get **13739181**, and if you desaturate by 10%, it is **13749967**.

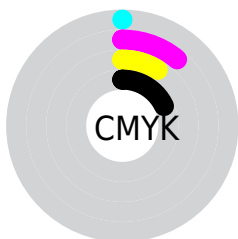
Distribution



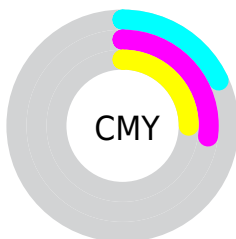
- Red (82%)
- Green (73%)
- Blue (75%)



- Red (82%)
- Yellow (73%)
- Blue (75%)



- Cyan (0%)
- Magenta (11%)
- Yellow (9%)
- Black (18%)



- Cyan (18%)
- Magenta (27%)
- Yellow (25%)

Brightness & Saturation Gradients

These gradients show how the Decimal color 13744574 changes by changing the brightness by 10 percent. The first figure shows a shift by +10% for each color and the second figure -10%.

Similar to the brightness gradients but the following saturation gradients show a change of the Decimal color 13744574 by changing the saturation by 10% instead.

■ 13744574

■ 13744574

16777215

■ 11902627

■ 16773622

■ 10126473

■ 8416111

■ 6771287

■ 5192512

■ 3679786

■ 2232597

■ 0

■ 13744574

■ 13744574

 13739181

 13749967

 13733789

 13755359

 13728396

 13760752

 13723004

 13762559

 13717611

 13712475

 13707082

 13701690

 13697068

Harmonies

Analogous

The Analogous color harmony consists of three colors that are next to each other on the color wheel.



13351623



13744574



13810358

Triad

The Triadic color harmony groups three colors that are evenly spaced from another and form a triangle on the color wheel.



13744574



12304816



11453134

Complementary

The Complementary color scheme is a pair of colors which are on the opposite of each other on the color wheel.



13744574



12177868

Split Complementary

Split-complementary colors differ from the complementary color scheme. The scheme consists of three colors, the original color and two neighbors of the complement color.



11191496



13744574



11715511

Square

The Square scheme is like the rectangle color scheme, but the four colors are evenly spaced on the color wheel.



13744574



12959662



11257024



12042192

Rectangle

The Rectangle color scheme consists of four colors that form a rectangle on the color wheel.



13744574



13614001



11257024



11322316

Sweetspot

The Sweet Spot groups the original color and five complimentary colors.



13744574



16775161



13416913



8419963



0



8421504

Same Dimension

The Same Dimension uses a secret algorithm to generate beautiful new colors.



13744574



16767971



13746361



6905440



11010083



2686984

Inverse Universe

The Inverse Universe completely reimagines the original color for something new.



13744574



16767971



12176081



6905440



11010083



2686985

Previews

White Background



This preview shows how the Decimal color 13744574 looks on a white background.

Color Contrast Check

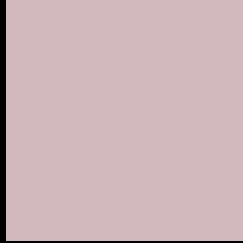
Large Text (above 18pt) WCAG AA × Fail

Any Text WCAG AA × Fail

Large Text (above 18pt) WCAG AAA × Fail

Any Text WCAG AAA × Fail

Black Background



This preview shows how the Decimal color 13744574 looks on a black background.

Color Contrast Check

Large Text (above 18pt) WCAG AA ✓ Pass

Any Text WCAG AA ✓ Pass

Large Text (above 18pt) WCAG AAA ✓ Pass

Any Text WCAG AAA ✓ Pass

If you want to check with other color combinations, try the [Color Contrast Checker](#).

Decimal 13744574 Background



This preview shows how black text looks on a background with the Decimal color 13744574.



This preview shows how white text looks on a background with the Decimal color 13744574.

Color Blindness Simulation

Color vision deficiency is a very complex topic, and I could not describe the different causes any better than Wikipedia does, so if you want to learn more, you should check out their [article about color blindness](#).


Dichromacy



Original Color
13744574

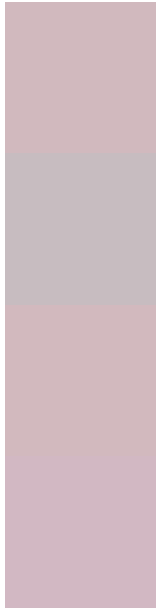
Protanopia
12762817

Deuteranopia
13810110



Tritanopia
13809862

Trichromacy



Original Color
13744574

Protanomaly
13089984

Deuteranomaly
13810110

Tritanomaly
13809859

Monochromacy



Original Color
13744574

Achromatopsia
12698049

Achromatomaly
13090496

CSS Examples

Text

The CSS property to change the color of the text to Decimal 13744574 is called "color". The color property can be set on classes, ids or directly on the HTML element.

This example shows how text in the color #D1B9BE looks like.

```
.text, #text, p{  
    color:#D1B9BE  
}
```

If you want to add a text shadow in that color use the text-shadow property, you can generate a text shadow directly with our [CSS Text Shadow Generator](#).

Here you see how black text with a 4 pixel #D1B9BE colored shadow looks like.

```
.shadow{ text-shadow: 4px 4px 2px #D1B9BE
}
```

Border

The CSS property to change the border of an element to Decimal 13744574 is called "border". The border property can be set on classes, ids or directly on the HTML element.

This example shows the color as border, it can be applied via the CSS property "border" or "border-color".

```
.border, #border, table{ border:4px solid
#D1B9BE }
```

If only the border color should be changed use the property `border-color`.

```
.border{ border-color:#D1B9BE }
```

If you want to add a box shadow in that color use:

Here you see how a box with a 4 pixel #D1B9BE colored shadow looks like.

```
.boxshadow{ -moz-box-shadow:4px 4px 4px  
4px #D1B9BE; -webkit-box-shadow:4px 4px  
4px 4px #D1B9BE; box-shadow:4px 4px 4px  
4px #D1B9BE }
```

Background

The CSS property to change the background color of an element to Decimal 13744574 is called "background". The background property can be set on classes, ids or directly on the HTML element.

```
.background, #background, body{  
background:#D1B9BE }
```

If only the background color should be changed can be used:

```
.background{ background-color:#D1B9BE }
```

This example shows the color as background, it is applied via the CSS property "background".

To optimize and compress your CSS code, you can use our [online CSS compressor and optimizer](#) based on csstidy. If you want to create a linear or radial gradient as background or border, check our [CSS Gradient Generator](#).

Hey! You found this booklet interesting? Support Converting Colors with the new Membership Option!

The pro membership hides all ads, plus gives you double the colors in the color bucket, and more awesome pro features!

[Learn more, Memberships starting at \\$2.50/m!](#)

**Follow me
on Twitter!**

@ConvertingColor