

Converting Colors

Decimal(13744838)

Have a look what the booklet for
Decimal(13744838) contains.

Decimal(13744838)	3
<i>Conversions</i>	4
<i>Details</i>	6
<i>Harmonies</i>	11
<i>Previews</i>	23
<i>Color Blindness Simulation</i>	26
<i>CSS Examples</i>	29

Color

Decimal(13744838)

Conversions

Conversions Part 1

Format	Color
Hex	D1BAC6
RGB	209, 186, 198
RGB Percent	82%, 73%, 78%
CMY	0.1804, 0.2706, 0.2235
CMYK	0.00, 0.11, 0.05, 0.18
HSL	329°, 20%, 77%
HSV	329°, 11%, 82%
XYZ	54.0464, 52.7503, 60.7594
YIQ	194.2450, 9.8560, 8.6080

Conversions

Conversions Part 2

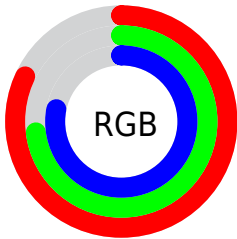
Format	Color
R _Y B	209, 186, 198
Decimal	13744838
CIE Lab	77.73, 10.24, -3.06
CIE LCh	78, 10.684, 343.366
Yxy	52.7503, 0.3226, 0.3148
Android (android.graphics.Color)	4291934918 (0xFFD1BAC6)
YUV	194.2450, 1.8512, 12.9401
Hunter-Lab	72.6294, 5.7274, 1.2406

Details

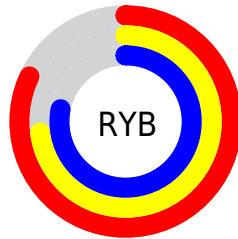
The Decimal color **13744838** is a light color, and the websafe version is hex **CCCCCC**. A complement of this color would be **12243397**, and the grayscale version is **12763842**.

A 20% lighter version of the original color is **16773887**, and **10126736** is the 20% darker color. If you saturate the color by 10%, you get **13739452**, and if you desaturate by 10%, it is **13750224**.

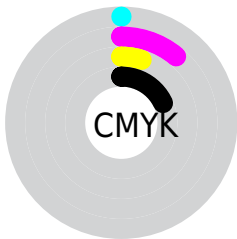
Distribution



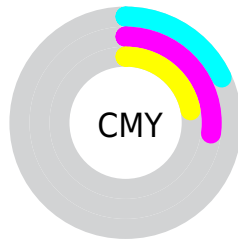
- Red (82%)
- Green (73%)
- Blue (78%)



- Red (82%)
- Yellow (73%)
- Blue (78%)



- Cyan (0%)
- Magenta (11%)
- Yellow (5%)
- Black (18%)



- Cyan (18%)
- Magenta (27%)
- Yellow (22%)

Brightness & Saturation Gradients

These gradients show how the Decimal color 13744838 changes by changing the brightness by 10 percent. The first figure shows a shift by +10% for each color and the second figure -10%.

Similar to the brightness gradients but the following saturation gradients show a change of the Decimal color 13744838 by changing the saturation by 10% instead.

■ 13744838

■ 13744838

16777215

■ 11902891

■ 16773887

■ 10126736

■ 8416375

■ 6771550

■ 5192774

■ 3679792

■ 2232859

■ 65536

■ 0

 13744838

 13744838

 13739452

 13750224

 13734066

 13755610

 13728680

 13760996

 13723294

 13762542

 13718164

 13762552

 13712778

 13762559

 13707392

 13702006

 13697133

Harmonies

Analogous

The Analogous color harmony consists of three colors that are next to each other on the color wheel.



13089999



13744838



14072252

Triad

The Triadic color harmony groups three colors that are evenly spaced from another and form a triangle on the color wheel.



13744838



12894637



11126221

Complementary

The Complementary color scheme is a pair of colors which are on the opposite of each other on the color wheel.



13744838



12243397

Split Complementary

Split-complementary colors differ from the complementary color scheme. The scheme consists of three colors, the original color and two neighbors of the complement color.



11060932



13744838



12108978

Square

The Square scheme is like the rectangle color scheme, but the four colors are evenly spaced on the color wheel.



13744838



13549229



11454138



11584467

Rectangle

The Rectangle color scheme consists of four colors that form a rectangle on the color wheel.



13744838



14006966



11454138



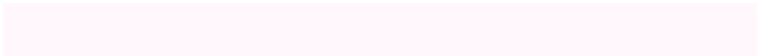
11060939

Sweetspot

The Sweet Spot groups the original color and five complimentary colors.



13744838



16775163



12958417



8419965



0



8421504

Same Dimension

The Same Dimension uses a secret algorithm to generate beautiful new colors.



13744838



16768751



13744827



6905444



11010136



2686997

Inverse Universe

The Inverse Universe completely reimagines the original color for something new.



13744838



16768751



12243408



6905444



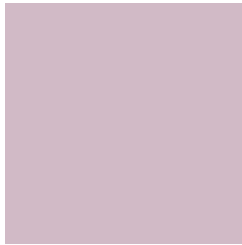
11010136



2686997

Previews

White Background



This preview shows how the Decimal color 13744838 looks on a white background.

Color Contrast Check

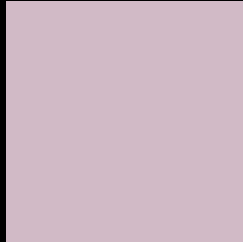
Large Text (above 18pt) WCAG AA × Fail

Any Text WCAG AA × Fail

Large Text (above 18pt) WCAG AAA × Fail

Any Text WCAG AAA × Fail

Black Background



This preview shows how the Decimal color 13744838 looks on a black background.

Color Contrast Check

Large Text (above 18pt) WCAG AA ✓ Pass

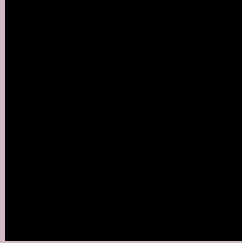
Any Text WCAG AA ✓ Pass

Large Text (above 18pt) WCAG AAA ✓ Pass

Any Text WCAG AAA ✓ Pass

If you want to check with other color combinations, try the [Color Contrast Checker](#).

Decimal 13744838 Background



This preview shows how black text looks on a background with the Decimal color 13744838.



This preview shows how white text looks on a background with the Decimal color 13744838.

Color Blindness Simulation

Color vision deficiency is a very complex topic, and I could not describe the different causes any better than Wikipedia does, so if you want to learn more, you should check out their [article about color blindness](#).

Dichromacy





Tritanopia
13744840

Trichromacy



Original Color
13744838

Protanomaly
13090248

Deuteranomaly
13679302

Tritanomaly
13744839

Monochromacy



Original Color
13744838

Achromatopsia
12763842

Achromatomaly
13090755

CSS Examples

Text

The CSS property to change the color of the text to Decimal 13744838 is called "color". The color property can be set on classes, ids or directly on the HTML element.

This example shows how text in the color #D1BAC6 looks like.

```
.text, #text, p{  
    color:#D1BAC6  
}
```

If you want to add a text shadow in that color use the text-shadow property, you can generate a text shadow directly with our [CSS Text Shadow Generator](#).

Here you see how black text with a 4 pixel #D1BAC6 colored shadow looks like.

```
.shadow{ text-shadow: 4px 4px 2px #D1BAC6
}
```

Border

The CSS property to change the border of an element to Decimal 13744838 is called "border". The border property can be set on classes, ids or directly on the HTML element.

This example shows the color as border, it can be applied via the CSS property "border" or "border-color".

```
.border, #border, table{ border:4px solid
#D1BAC6 }
```

If only the border color should be changed use the property `border-color`.

```
.border{ border-color:#D1BAC6 }
```

If you want to add a box shadow in that color use:

Here you see how a box with a 4 pixel #D1BAC6 colored shadow looks like.

```
.boxshadow{ -moz-box-shadow:4px 4px 4px  
4px #D1BAC6; -webkit-box-shadow:4px 4px  
4px 4px #D1BAC6; box-shadow:4px 4px 4px  
4px #D1BAC6 }
```

Background

The CSS property to change the background color of an element to Decimal 13744838 is called "background". The background property can be set on classes, ids or directly on the HTML element.

```
.background, #background, body{  
background:#D1BAC6 }
```

If only the background color should be changed can be used:

```
.background{ background-color:#D1BAC6 }
```

This example shows the color as background, it is applied via the CSS property "background".

To optimize and compress your CSS code, you can use our [online CSS compressor and optimizer](#) based on csstidy. If you want to create a linear or radial gradient as background or border, check our [CSS Gradient Generator](#).

Hey! You found this booklet interesting? Support Converting Colors with the new Membership Option!

The pro membership hides all ads, plus gives you double the colors in the color bucket, and more awesome pro features!

[Learn more, Memberships starting at \\$2.50/m!](#)

**Follow me
on Twitter!**

@ConvertingColor