

Converting Colors

Decimal(13745595)

Have a look what the booklet for
Decimal(13745595) contains.

Decimal(13745595)	3
<i>Conversions</i>	4
<i>Details</i>	6
<i>Harmonies</i>	11
<i>Previews</i>	23
<i>Color Blindness Simulation</i>	26
<i>CSS Examples</i>	29

Color

Decimal(13745595)

Conversions

Conversions Part 1

Format	Color
Hex	D1BDBB
RGB	209, 189, 187
RGB Percent	82%, 74%, 73%
CMY	0.1804, 0.2588, 0.2667
CMYK	0.00, 0.10, 0.11, 0.18
HSL	5°, 19%, 78%
HSV	5°, 11%, 82%
XYZ	53.4617, 53.5384, 54.5299
YIQ	194.7520, 12.5620, 3.6180

Conversions

Conversions Part 2

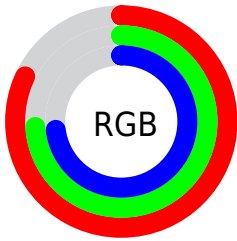
Format	Color
R _Y B	209, 189, 187
Decimal	13745595
CIE Lab	78.19, 6.74, 3.57
CIE LCh	78, 7.625, 27.947
Yxy	53.5384, 0.3310, 0.3314
Android (android.graphics.Color)	4291935675 (0xFFD1BDBB)
YUV	194.7520, -3.8217, 12.4955
Hunter-Lab	73.1699, 2.3740, 7.0330

Details

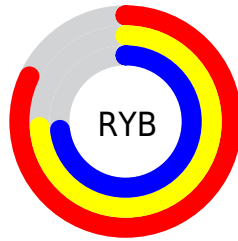
The Decimal color **13745595** is a light color, and the websafe version is hex **CCCCCC**. A complement of this color would be **12308433**, and the grayscale version is **12829635**.

A 20% lighter version of the original color is **16774643**, and **10127494** is the 20% darker color. If you saturate the color by 10%, you get **13740710**, and if you desaturate by 10%, it is **13750480**.

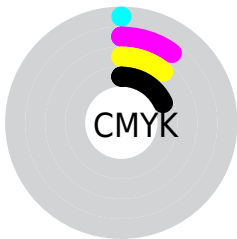
Distribution



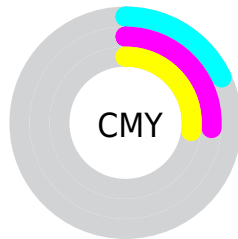
- Red (82%)
- Green (74%)
- Blue (73%)



- Red (82%)
- Yellow (74%)
- Blue (73%)



- Cyan (0%)
- Magenta (10%)
- Yellow (11%)
- Black (18%)



- Cyan (18%)
- Magenta (26%)
- Yellow (27%)

Brightness & Saturation Gradients

These gradients show how the Decimal color 13745595 changes by changing the brightness by 10 percent. The first figure shows a shift by +10% for each color and the second figure -10%.

Similar to the brightness gradients but the following saturation gradients show a change of the Decimal color 13745595 by changing the saturation by 10% instead.

■ 13745595

■ 13745595

16777215

■ 11903648

■ 16774643

■ 10127494

■ 8416877

■ 6772308

■ 5193533

■ 3680552

■ 2233363

■ 0

■ 13745595

■ 13745595

 13740710

 13750480

 13735825

 13755365

 13730940

 13760250

 13726055

 13762559

 13721171

 13716286

 13711401

 13706516

 13701888

Harmonies

Analogous

The Analogous color harmony consists of three colors that are next to each other on the color wheel.



13680066



13745595



13549238

Triad

The Triadic color harmony groups three colors that are evenly spaced from another and form a triangle on the color wheel.



13745595



12109242



12239567

Complementary

The Complementary color scheme is a pair of colors which are on the opposite of each other on the color wheel.



13745595



12308433

Split Complementary

Split-complementary colors differ from the complementary color scheme. The scheme consists of three colors, the original color and two neighbors of the complement color.



11781325



13745595



11716289

Square

The Square scheme is like the rectangle color scheme, but the four colors are evenly spaced on the color wheel.



13745595



12633013



11584968



12763342

Rectangle

The Rectangle color scheme consists of four colors that form a rectangle on the color wheel.



13745595



13287604



11584968



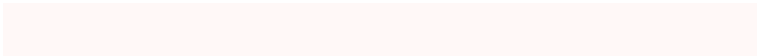
12043215

Sweetspot

The Sweet Spot groups the original color and five complimentary colors.



13745595



16775415



13745103



8420218



0



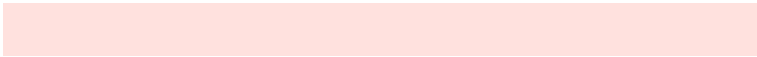
8421504

Same Dimension

The Same Dimension uses a secret algorithm to generate beautiful new colors.



13745595



16769502



13748411



6905694



11013888



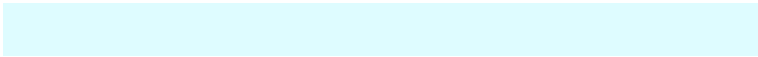
2688000

Inverse Universe

The Inverse Universe completely reimagines the original color for something new.



12308433



14613759



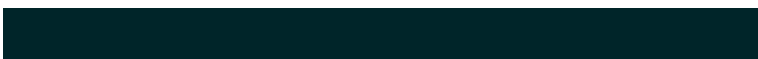
12305617



6187113



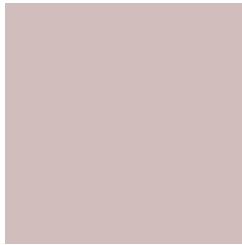
39336



9513

Previews

White Background



This preview shows how the Decimal color 13745595 looks on a white background.

Color Contrast Check

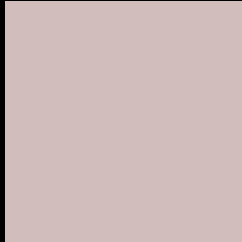
Large Text (above 18pt) WCAG AA × Fail

Any Text WCAG AA × Fail

Large Text (above 18pt) WCAG AAA × Fail

Any Text WCAG AAA × Fail

Black Background



This preview shows how the Decimal color 13745595 looks on a black background.

Color Contrast Check

Large Text (above 18pt) WCAG AA ✓ Pass

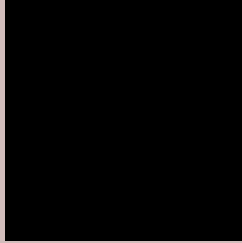
Any Text WCAG AA ✓ Pass

Large Text (above 18pt) WCAG AAA ✓ Pass

Any Text WCAG AAA ✓ Pass

If you want to check with other color combinations, try the [Color Contrast Checker](#).

Decimal 13745595 Background



This preview shows how black text looks on a background with the Decimal color 13745595.




This preview shows how white text looks on a background with the Decimal color 13745595.

Color Blindness Simulation

Color vision deficiency is a very complex topic, and I could not describe the different causes any better than Wikipedia does, so if you want to learn more, you should check out their [article about color blindness](#).

Dichromacy





Tritanopia
13876169

Trichromacy



Original Color
13745595

Protanomaly
13287612

Deuteranomaly
13941947

Tritanomaly
13810884

Monochromacy



Original Color
13745595

Achromatopsia
12829635

Achromatomaly
13156800

CSS Examples

Text

The CSS property to change the color of the text to Decimal 13745595 is called "color". The color property can be set on classes, ids or directly on the HTML element.

This example shows how text in the color #D1BDBB looks like.

```
.text, #text, p{  
    color:#D1BDBB  
}
```

If you want to add a text shadow in that color use the text-shadow property, you can generate a text shadow directly with our [CSS Text Shadow Generator](#).

Here you see how black text with a 4 pixel #D1BDBB colored shadow looks like.

```
.shadow{ text-shadow: 4px 4px 2px #D1BDBB
}
```

Border

The CSS property to change the border of an element to Decimal 13745595 is called "border". The border property can be set on classes, ids or directly on the HTML element.

This example shows the color as border, it can be applied via the CSS property "border" or "border-color".

```
.border, #border, table{ border:4px solid
#D1BDBB }
```

If only the border color should be changed use the property `border-color`.

```
.border{ border-color:#D1BDBB }
```

If you want to add a box shadow in that color use:

Here you see how a box with a 4 pixel #D1BDBB colored shadow looks like.

```
.boxshadow{ -moz-box-shadow:4px 4px 4px  
4px #D1BDBB; -webkit-box-shadow:4px 4px  
4px 4px #D1BDBB; box-shadow:4px 4px 4px  
4px #D1BDBB }
```

Background

The CSS property to change the background color of an element to Decimal 13745595 is called "background". The background property can be set on classes, ids or directly on the HTML element.

```
.background, #background, body{  
background:#D1BDBB }
```

If only the background color should be changed can be used:

```
.background{ background-color:#D1BDBB }
```

This example shows the color as background, it is applied via the CSS property "background".

To optimize and compress your CSS code, you can use our [online CSS compressor and optimizer](#) based on csstidy. If you want to create a linear or radial gradient as background or border, check our [CSS Gradient Generator](#).

Hey! You found this booklet interesting? Support Converting Colors with the new Membership Option!

The pro membership hides all ads, plus gives you double the colors in the color bucket, and more awesome pro features!

[Learn more, Memberships starting at \\$2.50/m!](#)

**Follow me
on Twitter!**

@ConvertingColor