

Converting Colors

Decimal(13746347)

Have a look what the booklet for
Decimal(13746347) contains.

Decimal(13746347)	3
<i>Conversions</i>	4
<i>Details</i>	6
<i>Harmonies</i>	11
<i>Previews</i>	23
<i>Color Blindness Simulation</i>	26
<i>CSS Examples</i>	29

Color

Decimal(13746347)

Conversions

Conversions Part 1

Format	Color
Hex	D1C0AB
RGB	209, 192, 171
RGB Percent	82%, 75%, 67%
CMY	0.1804, 0.2471, 0.3294
CMYK	0.00, 0.08, 0.18, 0.18
HSL	33°, 29%, 75%
HSV	33°, 18%, 82%
XYZ	52.4948, 54.1949, 46.2220
YIQ	194.6890, 16.8730, -2.9270

Conversions

Conversions Part 2

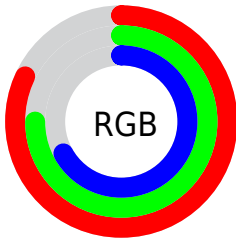
Format	Color
R_{YB}	202, 209, 171
Decimal	13746347
CIE _{Lab}	78.58, 2.58, 12.75
CIE _{LCh}	79, 13.007, 78.560
Yxy	54.1949, 0.3433, 0.3544
Android (android.graphics.Color)	4291936427 (0xFFD1C0AB)
YUV	194.6890, -11.6787, 12.5507
Hunter-Lab	73.6172, -1.5455, 14.3056

Details

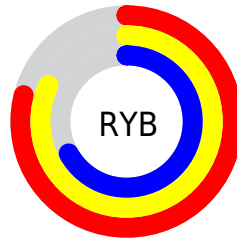
The Decimal color **13746347** is a light color, and the websafe version is hex **CCCCCC**. A complement of this color would be **11254993**, and the grayscale version is **12829635**.

A 20% lighter version of the original color is **16775394**, and **10128247** is the 20% darker color. If you saturate the color by 10%, you get **13744022**, and if you desaturate by 10%, it is **13748672**.

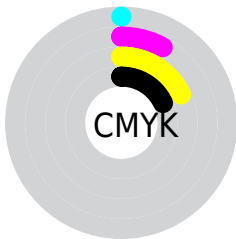
Distribution



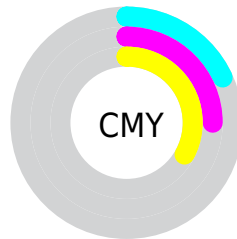
- Red (82%)
- Green (75%)
- Blue (67%)



- Red (79%)
- Yellow (82%)
- Blue (67%)



- Cyan (0%)
- Magenta (8%)
- Yellow (18%)
- Black (18%)



- Cyan (18%)
- Magenta (25%)
- Yellow (33%)

Brightness & Saturation Gradients

These gradients show how the Decimal color 13746347 changes by changing the brightness by 10 percent. The first figure shows a shift by +10% for each color and the second figure -10%.

Similar to the brightness gradients but the following saturation gradients show a change of the Decimal color 13746347 by changing the saturation by 10% instead.

■ 13746347

■ 13746347

16777215

■ 11904400

■ 16775394

■ 10128247

■ 8417630

■ 6773062

■ 5128496

■ 3615515

■ 2234112

■ 0

■ 13746347

■ 13746347

 13744022

 13748672

 13741441

 13751253

 13739116

 13753578

 13736791

 13755903

 13734210

 13758463

 13731886

 13760767

 13729561

 13762559

 13726980

 13726720

Harmonies

Analogous

The Analogous color harmony consists of three colors that are next to each other on the color wheel.



14335153



13746347



12895404

Triad

The Triadic color harmony groups three colors that are evenly spaced from another and form a triangle on the color wheel.



13746347



10799818



13549011

Complementary

The Complementary color scheme is a pair of colors which are on the opposite of each other on the color wheel.



13746347



11254993

Split Complementary

Split-complementary colors differ from the complementary color scheme. The scheme consists of three colors, the original color and two neighbors of the complement color.



12567001



13746347



10930388

Square

The Square scheme is like the rectangle color scheme, but the four colors are evenly spaced on the color wheel.



13746347



11192765



11584986



14203848

Rectangle

The Rectangle color scheme consists of four colors that form a rectangle on the color wheel.



13746347



12306095



11584986



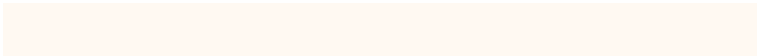
13221589

Sweetspot

The Sweet Spot groups the original color and five complimentary colors.



13746347



16775666



13740988



8420472



0



8421504

Same Dimension

The Same Dimension uses a secret algorithm to generate beautiful new colors.



13746347



16770759



13619627



6906974



11033856



2692864

Inverse Universe

The Inverse Universe completely reimagines the original color for something new.



11254993



13099263



11381713



6185833



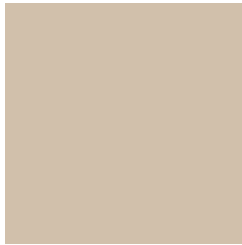
19368



4649

Previews

White Background



This preview shows how the Decimal color 13746347 looks on a white background.

Color Contrast Check

Large Text (above 18pt) WCAG AA × Fail

Any Text WCAG AA × Fail

Large Text (above 18pt) WCAG AAA × Fail

Any Text WCAG AAA × Fail

Black Background



This preview shows how the Decimal color 13746347 looks on a black background.

Color Contrast Check

Large Text (above 18pt) WCAG AA ✓ Pass

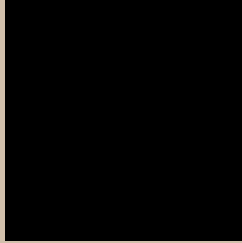
Any Text WCAG AA ✓ Pass

Large Text (above 18pt) WCAG AAA ✓ Pass

Any Text WCAG AAA ✓ Pass

If you want to check with other color combinations, try the [Color Contrast Checker](#).

Decimal 13746347 Background



This preview shows how black text looks on a background with the Decimal color 13746347.



This preview shows how white text looks on a background with the Decimal color 13746347.

Color Blindness Simulation

Color vision deficiency is a very complex topic, and I could not describe the different causes any better than Wikipedia does, so if you want to learn more, you should check out their [article about color blindness](#).

Dichromacy



Original Color
13746347

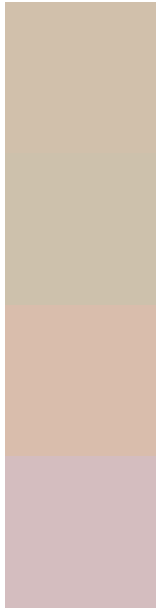
Protanopia
13353644

Deuteranopia
14531500



Tritanopia
14007242

Trichromacy



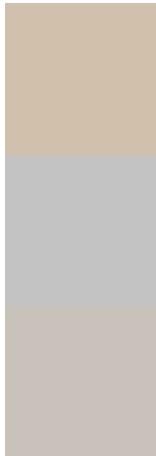
Original Color
13746347

Protanomaly
13484460

Deuteranomaly
14269868

Tritanomaly
13942207

Monochromacy



Original Color
13746347

Achromatopsia
12829635

Achromatomaly
13157050

CSS Examples

Text

The CSS property to change the color of the text to Decimal 13746347 is called "color". The color property can be set on classes, ids or directly on the HTML element.

This example shows how text in the color #D1C0AB looks like.

```
.text, #text, p{  
    color:#D1C0AB  
}
```

If you want to add a text shadow in that color use the text-shadow property, you can generate a text shadow directly with our [CSS Text Shadow Generator](#).

Here you see how black text with a 4 pixel #D1C0AB colored shadow looks like.

```
.shadow{ text-shadow: 4px 4px 2px #D1C0AB
}
```

Border

The CSS property to change the border of an element to Decimal 13746347 is called "border". The border property can be set on classes, ids or directly on the HTML element.

This example shows the color as border, it can be applied via the CSS property "border" or "border-color".

```
.border, #border, table{ border:4px solid
#D1C0AB }
```

If only the border color should be changed use the property `border-color`.

```
.border{ border-color:#D1C0AB }
```

If you want to add a box shadow in that color use:

Here you see how a box with a 4 pixel #D1C0AB colored shadow looks like.

```
.boxshadow{ -moz-box-shadow:4px 4px 4px  
4px #D1C0AB; -webkit-box-shadow:4px 4px  
4px 4px #D1C0AB; box-shadow:4px 4px 4px  
4px #D1C0AB }
```

Background

The CSS property to change the background color of an element to Decimal 13746347 is called "background". The background property can be set on classes, ids or directly on the HTML element.

```
.background, #background, body{  
background:#D1C0AB }
```

If only the background color should be changed can be used:

```
.background{ background-color:#D1C0AB }
```

This example shows the color as background, it is applied via the CSS property "background".

To optimize and compress your CSS code, you can use our [online CSS compressor and optimizer](#) based on csstidy. If you want to create a linear or radial gradient as background or border, check our [CSS Gradient Generator](#).

Hey! You found this booklet interesting? Support Converting Colors with the new Membership Option!

The pro membership hides all ads, plus gives you double the colors in the color bucket, and more awesome pro features!

[Learn more, Memberships starting at \\$2.50/m!](#)

**Follow me
on Twitter!**

@ConvertingColor