

Converting Colors

Decimal(13794205)

Have a look what the booklet for
Decimal(13794205) contains.

Decimal(13794205)	3
<i>Conversions</i>	4
<i>Details</i>	6
<i>Harmonies</i>	11
<i>Previews</i>	23
<i>Color Blindness Simulation</i>	26
<i>CSS Examples</i>	29

Color

Decimal(13794205)

Conversions

Conversions Part 1

Format	Color
Hex	D27B9D
RGB	210, 123, 157
RGB Percent	82%, 48%, 62%
CMY	0.1765, 0.5176, 0.3843
CMYK	0.00, 0.41, 0.25, 0.18
HSL	337°, 49%, 65%
HSV	337°, 41%, 82%
XYZ	39.7471, 30.3019, 35.6522
YIQ	152.8890, 40.9380, 29.0180

Conversions

Conversions Part 2

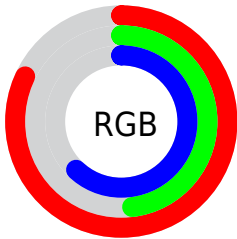
Format	Color
R _{YB}	210, 123, 157
Decimal	13794205
CIE Lab	61.91, 38.07, -3.52
CIE LCh	62, 38.230, 354.724
Yxy	30.3019, 0.3760, 0.2867
Android (android.graphics.Color)	4291984285 (0xFFD27B9D)
YUV	152.8890, 2.0267, 50.0863
Hunter-Lab	55.0471, 32.5545, 0.1328

Details

The Decimal color **13794205** is a light color, and the websafe version is hex **CC6699**. A complement of this color would be **8114864**, and the grayscale version is **10066329**.

A 20% lighter version of the original color is **16757203**, and **10045546** is the 20% darker color. If you saturate the color by 10%, you get **13788816**, and if you desaturate by 10%, it is **13799594**.

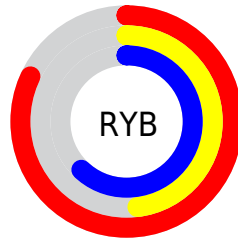
Distribution



Red (82%)

Green (48%)

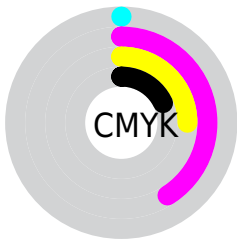
Blue (62%)



Red (82%)

Yellow (48%)

Blue (62%)

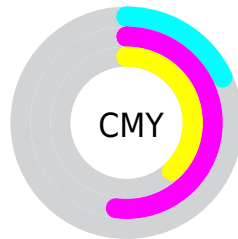


Cyan (0%)

Magenta (41%)

Yellow (25%)

Black (18%)



Cyan (18%)

Magenta (52%)

Yellow (38%)

Brightness & Saturation Gradients

These gradients show how the Decimal color 13794205 changes by changing the brightness by 10 percent. The first figure shows a shift by +10% for each color and the second figure -10%.

Similar to the brightness gradients but the following saturation gradients show a change of the Decimal color 13794205 by changing the saturation by 10% instead.

 13794205

 13794205

16777215

 11886979

 16757203


 10045546

 16764400

 8269650

 16771839

 6493243

 4784165

 3276816

 524288

 0

 13794205

 13794205

13788816

13799594

13783427

13804983

13778039

13810371

13772650

13815760

13767261

13821149

13762642

13826538

13828087

13828095

Harmonies

Analogous

The Analogous color harmony consists of three colors that are next to each other on the color wheel.



12223421



13794205



14056571

Triad

The Triadic color harmony groups three colors that are evenly spaced from another and form a triangle on the color wheel.



13794205



9411671



41932

Complementary

The Complementary color scheme is a pair of colors which are on the opposite of each other on the color wheel.



13794205



8114864

Split Complementary

Split-complementary colors differ from the complementary color scheme. The scheme consists of three colors, the original color and two neighbors of the complement color.



42929



13794205



6792045

Square

The Square scheme is like the rectangle color scheme, but the four colors are evenly spaced on the color wheel.



13794205



11571793



3385230



5610457

Rectangle

The Rectangle color scheme consists of four colors that form a rectangle on the color wheel.



13794205



13664871



3385230



42436

Sweetspot

The Sweet Spot groups the original color and five complimentary colors.



13794205



16769260



11500498



8416885



0



8421504

Same Dimension

The Same Dimension uses a secret algorithm to generate beautiful new colors.



13794205



16744625



13796475



6905442



11010114



2686992

Inverse Universe

The Inverse Universe completely reimagines the original color for something new.



13794205



16744625



8112594



6905442



11010114



2686992

Previews

White Background



This preview shows how the Decimal color 13794205 looks on a white background.

Color Contrast Check

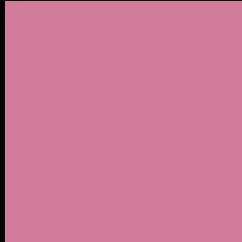
Large Text (above 18pt) WCAG AA × Fail

Any Text WCAG AA × Fail

Large Text (above 18pt) WCAG AAA × Fail

Any Text WCAG AAA × Fail

Black Background



This preview shows how the Decimal color 13794205 looks on a black background.

Color Contrast Check

Large Text (above 18pt) WCAG AA ✓ Pass

Any Text WCAG AA ✓ Pass

Large Text (above 18pt) WCAG AAA ✓ Pass

Any Text WCAG AAA ✓ Pass

If you want to check with other color combinations, try the [Color Contrast Checker](#).

Decimal 13794205 Background



This preview shows how black text looks on a background with the Decimal color 13794205.




This preview shows how white text looks on a background with the Decimal color 13794205.

Color Blindness Simulation

Color vision deficiency is a very complex topic, and I could not describe the different causes any better than Wikipedia does, so if you want to learn more, you should check out their [article about color blindness](#).

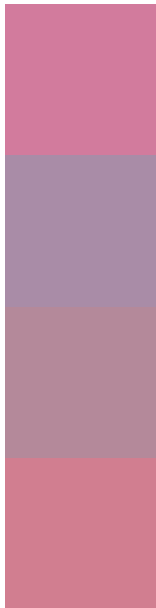
Dichromacy





Tritanopia
13664136

Trichromacy



Original Color
13794205

Protanomaly
11111591

Deuteranomaly
11831706

Tritanomaly
13729424

Monochromacy



Original Color
13794205

Achromatopsia
10066329

Achromatomaly
11439770

CSS Examples

Text

The CSS property to change the color of the text to Decimal 13794205 is called "color". The color property can be set on classes, ids or directly on the HTML element.

This example shows how text in the color #D27B9D looks like.

```
.text, #text, p{  
    color:#D27B9D  
}
```

If you want to add a text shadow in that color use the text-shadow property, you can generate a text shadow directly with our [CSS Text Shadow Generator](#).

Here you see how black text with a 4 pixel #D27B9D colored shadow looks like.

```
.shadow{ text-shadow: 4px 4px 2px #D27B9D
}
```

Border

The CSS property to change the border of an element to Decimal 13794205 is called "border". The border property can be set on classes, ids or directly on the HTML element.

This example shows the color as border, it can be applied via the CSS property "border" or "border-color".

```
.border, #border, table{ border:4px solid
#D27B9D }
```

If only the border color should be changed use the property `border-color`.

```
.border{ border-color:#D27B9D }
```

If you want to add a box shadow in that color use:

Here you see how a box with a 4 pixel #D27B9D colored shadow looks like.

```
.boxshadow{ -moz-box-shadow:4px 4px 4px  
4px #D27B9D; -webkit-box-shadow:4px 4px  
4px 4px #D27B9D; box-shadow:4px 4px 4px  
4px #D27B9D }
```

Background

The CSS property to change the background color of an element to Decimal 13794205 is called "background". The background property can be set on classes, ids or directly on the HTML element.

```
.background, #background, body{  
background:#D27B9D }
```

If only the background color should be changed can be used:

```
.background{ background-color:#D27B9D }
```

This example shows the color as background, it is applied via the CSS property "background".

To optimize and compress your CSS code, you can use our [online CSS compressor and optimizer](#) based on csstidy. If you want to create a linear or radial gradient as background or border, check our [CSS Gradient Generator](#).

Hey! You found this booklet interesting? Support Converting Colors with the new Membership Option!

The pro membership hides all ads, plus gives you double the colors in the color bucket, and more awesome pro features!

[Learn more, Memberships starting at \\$2.50/m!](#)

**Follow me
on Twitter!**

@ConvertingColor