

Converting Colors

Decimal(13796237)

Have a look what the booklet for
Decimal(13796237) contains.

Decimal(13796237)	3
<i>Conversions</i>	4
<i>Details</i>	6
<i>Harmonies</i>	11
<i>Previews</i>	23
<i>Color Blindness Simulation</i>	26
<i>CSS Examples</i>	29

Color

Decimal(13796237)

Conversions

Conversions Part 1

Format	Color
Hex	D2838D
RGB	210, 131, 141
RGB Percent	82%, 51%, 55%
CMY	0.1765, 0.4863, 0.4471
CMYK	0.00, 0.38, 0.33, 0.18
HSL	352°, 47%, 67%
HSV	352°, 38%, 82%
XYZ	39.5024, 31.8573, 29.2664
YIQ	155.7610, 43.8740, 19.8580

Conversions

Conversions Part 2

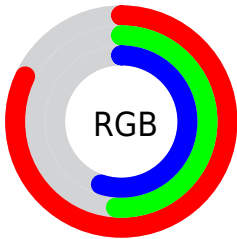
Format	Color
RYB	210, 131, 141
Decimal	13796237
CIELab	63.22, 31.65, 7.52
CIElCh	63, 32.530, 13.370
Yxy	31.8573, 0.3926, 0.3166
Android (android.graphics.Color)	4291986317 (0xFFD2838D)
YUV	155.7610, -7.2772, 47.5676
Hunter-Lab	56.4423, 26.1531, 8.7666

Details

The Decimal color **13796237** is a light color, and the websafe version is hex **CC9999**. A complement of this color would be **8639176**, and the grayscale version is **10263708**.

A 20% lighter version of the original color is **16759235**, and **10047579** is the 20% darker color. If you saturate the color by 10%, you get **13790843**, and if you desaturate by 10%, it is **13801631**.

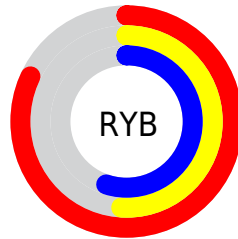
Distribution



Red (82%)

Green (51%)

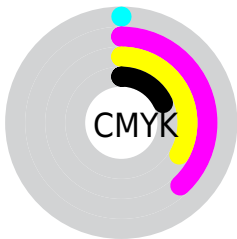
Blue (55%)



Red (82%)

Yellow (51%)

Blue (55%)

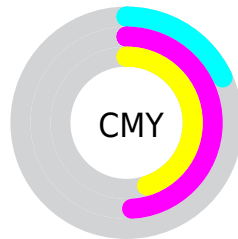


Cyan (0%)

Magenta (38%)

Yellow (33%)

Black (18%)



Cyan (18%)

Magenta (49%)

Yellow (45%)

Brightness & Saturation Gradients

These gradients show how the Decimal color 13796237 changes by changing the brightness by 10 percent. The first figure shows a shift by +10% for each color and the second figure -10%.

Similar to the brightness gradients but the following saturation gradients show a change of the Decimal color 13796237 by changing the saturation by 10% instead.

 13796237

 13796237

16777215

 11889012

 16759235

 10047579

 16766430

 8271940

 16773883

 6496301

 4785433

 3276800

 393216

 0

 13796237

 13796237

 13790843

 13801631

 13785448

 13807026

 13780054

 13812420

 13774660

 13817814

 13769265

 13823209

 13763871

 13828091

 13762587

 13828095

Harmonies

Analogous

The Analogous color harmony consists of three colors that are next to each other on the color wheel.



13141418



13796237



13469811

Triad

The Triadic color harmony groups three colors that are evenly spaced from another and form a triangle on the color wheel.



13796237



8364910



5677520

Complementary

The Complementary color scheme is a pair of colors which are on the opposite of each other on the color wheel.



13796237



8639176

Split Complementary

Split-complementary colors differ from the complementary color scheme. The scheme consists of three colors, the original color and two neighbors of the complement color.



3188416



13796237



6072456

Square

The Square scheme is like the rectangle color scheme, but the four colors are evenly spaced on the color wheel.



13796237



10525536



3713445



8755153

Rectangle

The Rectangle color scheme consists of four colors that form a rectangle on the color wheel.



13796237



12750438



3713445



4694988

Sweetspot

The Sweet Spot groups the original color and five complimentary colors.



13796237



16770023



13075410



8417137



0



8421504

Same Dimension

The Same Dimension uses a secret algorithm to generate beautiful new colors.



13796237



16747675



13803651



6905439



11010069



2686981

Inverse Universe

The Inverse Universe completely reimagines the original color for something new.



13796237



16747675



8631762



6905439



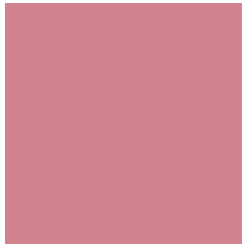
11010069



2686981

Previews

White Background



This preview shows how the Decimal color 13796237 looks on a white background.

Color Contrast Check

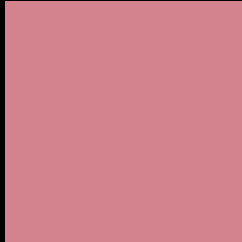
Large Text (above 18pt) WCAG AA × Fail

Any Text WCAG AA × Fail

Large Text (above 18pt) WCAG AAA × Fail

Any Text WCAG AAA × Fail

Black Background



This preview shows how the Decimal color 13796237 looks on a black background.

Color Contrast Check

Large Text (above 18pt) WCAG AA ✓ Pass

Any Text WCAG AA ✓ Pass

Large Text (above 18pt) WCAG AAA ✓ Pass

Any Text WCAG AAA ✓ Pass

If you want to check with other color combinations, try the [Color Contrast Checker](#).

Decimal 13796237 Background



This preview shows how black text looks on a background with the Decimal color 13796237.

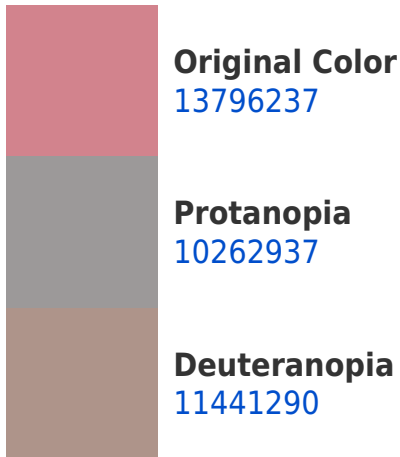


This preview shows how white text looks on a background with the Decimal color 13796237.

Color Blindness Simulation

Color vision deficiency is a very complex topic, and I could not describe the different causes any better than Wikipedia does, so if you want to learn more, you should check out their [article about color blindness](#).

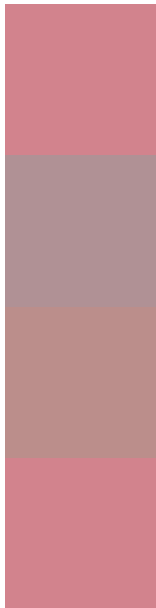
Dichromacy





Tritanopia
13796237

Trichromacy



Original Color
13796237

Protanomaly
11571605

Deuteranomaly
12291723

Tritanomaly
13796237

Monochromacy



Original Color
13796237

Achromatopsia
10263708

Achromatomaly
11572119

CSS Examples

Text

The CSS property to change the color of the text to Decimal 13796237 is called "color". The color property can be set on classes, ids or directly on the HTML element.

This example shows how text in the color #D2838D looks like.

```
.text, #text, p{  
  color:#D2838D  
}
```

If you want to add a text shadow in that color use the text-shadow property, you can generate a text shadow directly with our [CSS Text Shadow Generator](#).

Here you see how black text with a 4 pixel #D2838D colored shadow looks like.

```
.shadow{ text-shadow: 4px 4px 2px #D2838D
}
```

Border

The CSS property to change the border of an element to Decimal 13796237 is called "border". The border property can be set on classes, ids or directly on the HTML element.

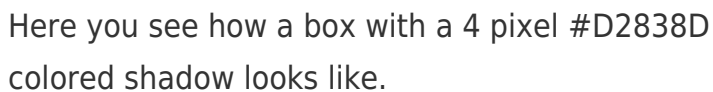
This example shows the color as border, it can be applied via the CSS property "border" or "border-color".

```
.border, #border, table{ border:4px solid
#D2838D }
```

If only the border color should be changed use the property `border-color`.

```
.border{ border-color:#D2838D }
```

If you want to add a box shadow in that color use:



Here you see how a box with a 4 pixel #D2838D colored shadow looks like.

```
.boxshadow{ -moz-box-shadow:4px 4px 4px  
4px #D2838D; -webkit-box-shadow:4px 4px  
4px 4px #D2838D; box-shadow:4px 4px 4px  
4px #D2838D }
```

Background

The CSS property to change the background color of an element to Decimal 13796237 is called "background". The background property can be set on classes, ids or directly on the HTML element.

```
.background, #background, body{  
background:#D2838D }
```

If only the background color should be changed can be used:

```
.background{ background-color:#D2838D }
```

This example shows the color as background, it is applied via the CSS property "background".

To optimize and compress your CSS code, you can use our [online CSS compressor and optimizer](#) based on csstidy. If you want to create a linear or radial gradient as background or border, check our [CSS Gradient Generator](#).

Hey! You found this booklet interesting? Support Converting Colors with the new Membership Option!

The pro membership hides all ads, plus gives you double the colors in the color bucket, and more awesome pro features!

[Learn more, Memberships starting at \\$2.50/m!](#)

**Follow me
on Twitter!**

@ConvertingColor