

Converting Colors

Decimal(13800339)

Have a look what the booklet for
Decimal(13800339) contains.

Decimal(13800339)	3
<i>Conversions</i>	4
<i>Details</i>	6
<i>Harmonies</i>	11
<i>Previews</i>	23
<i>Color Blindness Simulation</i>	26
<i>CSS Examples</i>	29

Color

Decimal(13800339)

Conversions

Conversions Part 1

Format	Color
Hex	D29393
RGB	210, 147, 147
RGB Percent	82%, 58%, 58%
CMY	0.1765, 0.4235, 0.4235
CMYK	0.00, 0.30, 0.30, 0.18
HSL	0°, 41%, 70%
HSV	0°, 30%, 82%
XYZ	42.2785, 36.6757, 32.4546
YIQ	165.8370, 37.5480, 13.3560

Conversions

Conversions Part 2

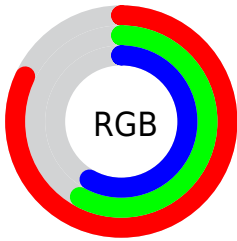
Format	Color
R _Y B	210, 147, 147
Decimal	13800339
CIE Lab	67.03, 23.78, 9.56
CIE LCh	67, 25.628, 21.907
Yxy	36.6757, 0.3795, 0.3292
Android (android.graphics.Color)	4291990419 (0xFFD29393)
YUV	165.8370, -9.2866, 38.7310
Hunter-Lab	60.5604, 18.6339, 10.6186

Details

The Decimal color **13800339** is a light color, and the websafe version is hex **CC9999**. A complement of this color would be **9687762**, and the grayscale version is **10921638**.

A 20% lighter version of the original color is **16763337**, and **10117217** is the 20% darker color. If you saturate the color by 10%, you get **13794942**, and if you desaturate by 10%, it is **13805736**.

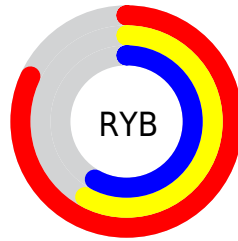
Distribution



Red (82%)

Green (58%)

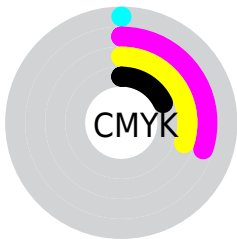
Blue (58%)



Red (82%)

Yellow (58%)

Blue (58%)

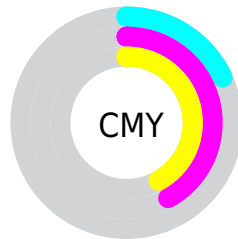


Cyan (0%)

Magenta (30%)

Yellow (30%)

Black (18%)



Cyan (18%)

Magenta (42%)

Yellow (42%)

Brightness & Saturation Gradients

These gradients show how the Decimal color 13800339 changes by changing the brightness by 10 percent. The first figure shows a shift by +10% for each color and the second figure -10%.

Similar to the brightness gradients but the following saturation gradients show a change of the Decimal color 13800339 by changing the saturation by 10% instead.

 13800339

 13800339

16777215

 11958649

 16763337

 10117217

 16770789

 8341577

 6631474

 4921885

 3343108

 1507328

 0

 13800339

 13800339

 13794942

 13805736

 13789545

 13811133

 13784148

 13816530

 13778751

 13821927

 13773354

 13827324

 13767957

 13828095

 13762560

Harmonies

Analogous

The Analogous color harmony consists of three colors that are next to each other on the color wheel.



13472682



13800339



13342848

Triad

The Triadic color harmony groups three colors that are evenly spaced from another and form a triangle on the color wheel.



13800339



8957318



8300496

Complementary

The Complementary color scheme is a pair of colors which are on the opposite of each other on the color wheel.



13800339



9687762

Split Complementary

Split-complementary colors differ from the complementary color scheme. The scheme consists of three colors, the original color and two neighbors of the complement color.



6598087



13800339



7319708

Square

The Square scheme is like the rectangle color scheme, but the four colors are evenly spaced on the color wheel.



13800339



10659704



6271155



10395598

Rectangle

The Rectangle color scheme consists of four colors that form a rectangle on the color wheel.



13800339



12623224



6271155



7645646

Sweetspot

The Sweet Spot groups the original color and five complimentary colors.



13800339



16771304



13800402



8417649



0



8421504

Same Dimension

The Same Dimension uses a secret algorithm to generate beautiful new colors.



13800339



16753571



13808531



6905438



11010048



2686976

Inverse Universe

The Inverse Universe completely reimagines the original color for something new.



9687762



10747903



9679826



6187369



43176



10537

Previews

White Background



This preview shows how the Decimal color 13800339 looks on a white background.

Color Contrast Check

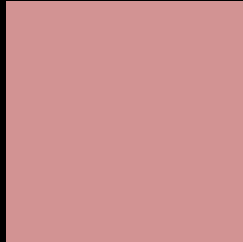
Large Text (above 18pt) WCAG AA × Fail

Any Text WCAG AA × Fail

Large Text (above 18pt) WCAG AAA × Fail

Any Text WCAG AAA × Fail

Black Background



This preview shows how the Decimal color 13800339 looks on a black background.

Color Contrast Check

Large Text (above 18pt) WCAG AA ✓ Pass

Any Text WCAG AA ✓ Pass

Large Text (above 18pt) WCAG AAA ✓ Pass

Any Text WCAG AAA ✓ Pass

If you want to check with other color combinations, try the [Color Contrast Checker](#).

Decimal 13800339 Background



This preview shows how black text looks on a background with the Decimal color 13800339.




This preview shows how white text looks on a background with the Decimal color 13800339.

Color Blindness Simulation

Color vision deficiency is a very complex topic, and I could not describe the different causes any better than Wikipedia does, so if you want to learn more, you should check out their [article about color blindness](#).

Dichromacy





Tritanopia
13865629

Trichromacy



Original Color
13800339

Protanomaly
12033432

Deuteranomaly
12819090

Tritanomaly
13865625

Monochromacy



Original Color
13800339

Achromatopsia
10921638

Achromatomaly
11968415

CSS Examples

Text

The CSS property to change the color of the text to Decimal 13800339 is called "color". The color property can be set on classes, ids or directly on the HTML element.

This example shows how text in the color #D29393 looks like.

```
.text, #text, p{  
  color:#D29393  
}
```

If you want to add a text shadow in that color use the text-shadow property, you can generate a text shadow directly with our [CSS Text Shadow Generator](#).

Here you see how black text with a 4 pixel #D29393 colored shadow looks like.

```
.shadow{ text-shadow: 4px 4px 2px #D29393
}
```

Border

The CSS property to change the border of an element to Decimal 13800339 is called "border". The border property can be set on classes, ids or directly on the HTML element.

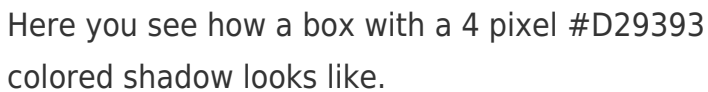
This example shows the color as border, it can be applied via the CSS property "border" or "border-color".

```
.border, #border, table{ border:4px solid
#D29393 }
```

If only the border color should be changed use the property `border-color`.

```
.border{ border-color:#D29393 }
```

If you want to add a box shadow in that color use:

A rectangular box with a 4px red shadow. The box is white with a thin red border. The shadow is a darker red color, extending 4 pixels to the right and 4 pixels down from the bottom-right corner of the box.

Here you see how a box with a 4 pixel #D29393 colored shadow looks like.

```
.boxshadow{ -moz-box-shadow:4px 4px 4px  
4px #D29393; -webkit-box-shadow:4px 4px  
4px 4px #D29393; box-shadow:4px 4px 4px  
4px #D29393 }
```

Background

The CSS property to change the background color of an element to Decimal 13800339 is called "background". The background property can be set on classes, ids or directly on the HTML element.

```
.background, #background, body{  
background:#D29393 }
```

If only the background color should be changed can be used:

```
.background{ background-color:#D29393 }
```

This example shows the color as background, it is applied via the CSS property "background".

To optimize and compress your CSS code, you can use our [online CSS compressor and optimizer](#) based on csstidy. If you want to create a linear or radial gradient as background or border, check our [CSS Gradient Generator](#).

Hey! You found this booklet interesting? Support Converting Colors with the new Membership Option!

The pro membership hides all ads, plus gives you double the colors in the color bucket, and more awesome pro features!

[Learn more, Memberships starting at \\$2.50/m!](#)

**Follow me
on Twitter!**

@ConvertingColor