

Converting Colors

Decimal(13800851)

Have a look what the booklet for
Decimal(13800851) contains.

Decimal(13800851)	3
<i>Conversions</i>	4
<i>Details</i>	6
<i>Harmonies</i>	11
<i>Previews</i>	23
<i>Color Blindness Simulation</i>	26
<i>CSS Examples</i>	29

Color

Decimal(13800851)

Conversions

Conversions Part 1

Format	Color
Hex	D29593
RGB	210, 149, 147
RGB Percent	82%, 58%, 58%
CMY	0.1765, 0.4157, 0.4235
CMYK	0.00, 0.29, 0.30, 0.18
HSL	2°, 41%, 70%
HSV	2°, 30%, 82%
XYZ	42.5922, 37.3031, 32.5591
YIQ	167.0110, 36.9980, 12.3100

Conversions

Conversions Part 2

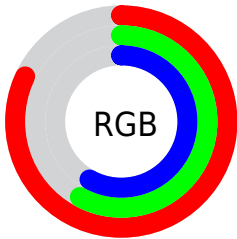
Format	Color
R _Y B	210, 149, 147
Decimal	13800851
CIE Lab	67.50, 22.69, 10.23
CIE LCh	68, 24.889, 24.270
Yxy	37.3031, 0.3788, 0.3317
Android (android.graphics.Color)	4291990931 (0xFFD29593)
YUV	167.0110, -9.8654, 37.7014
Hunter-Lab	61.0763, 17.5956, 11.1465

Details

The Decimal color **13800851** is a light color, and the websafe version is hex **CC9999**. A complement of this color would be **9687250**, and the grayscale version is **10987431**.

A 20% lighter version of the original color is **16763849**, and **10117728** is the 20% darker color. If you saturate the color by 10%, you get **13795710**, and if you desaturate by 10%, it is **13805992**.

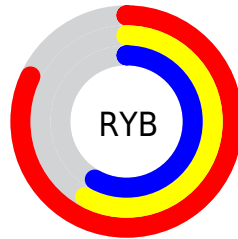
Distribution



Red (82%)

Green (58%)

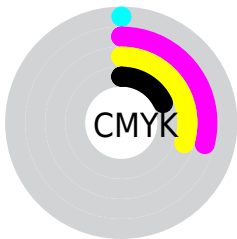
Blue (58%)



Red (82%)

Yellow (58%)

Blue (58%)

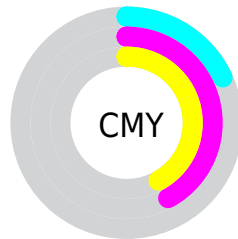


Cyan (0%)

Magenta (29%)

Yellow (30%)

Black (18%)



Cyan (18%)

Magenta (42%)

Yellow (42%)

Brightness & Saturation Gradients

These gradients show how the Decimal color 13800851 changes by changing the brightness by 10 percent. The first figure shows a shift by +10% for each color and the second figure -10%.

Similar to the brightness gradients but the following saturation gradients show a change of the Decimal color 13800851 by changing the saturation by 10% instead.

■ 13800851

■ 13800851

16777215

■ 11959161

■ 16763849

■ 10117728

■ 16771301

■ 8341833

■ 6631986

■ 4922397

■ 3343620

■ 1638401

■ 0

■ 13800851

■ 13800851

 13795710

 13805992

 13790313

 13811389

 13785172

 13816530

 13780031

 13821671

 13774634

 13827068

 13769493

 13828095

 13764352

Harmonies

Analogous

The Analogous color harmony consists of three colors that are next to each other on the color wheel.



13538474



13800851



13277825

Triad

The Triadic color harmony groups three colors that are evenly spaced from another and form a triangle on the color wheel.



13800851



8957578



8628433

Complementary

The Complementary color scheme is a pair of colors which are on the opposite of each other on the color wheel.



13800851



9687250

Split Complementary

Split-complementary colors differ from the complementary color scheme. The scheme consists of three colors, the original color and two neighbors of the complement color.



6926024



13800851



7385503

Square

The Square scheme is like the rectangle color scheme, but the four colors are evenly spaced on the color wheel.



13800851



10660219



6468022



10657997

Rectangle

The Rectangle color scheme consists of four colors that form a rectangle on the color wheel.



13800851



12623738



6468022



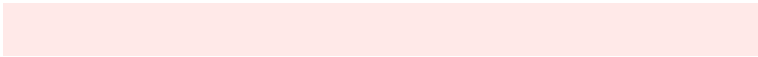
7973583

Sweetspot

The Sweet Spot groups the original color and five complimentary colors.



13800851



16771560



13800401



8417905



0



8421504

Same Dimension

The Same Dimension uses a secret algorithm to generate beautiful new colors.



13800851



16754339



13808787



6905438



11011328



2687232

Inverse Universe

The Inverse Universe completely reimagines the original color for something new.



9687250



10747135



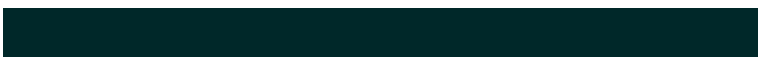
9679314



6187113



41896



10281

Previews

White Background



This preview shows how the Decimal color 13800851 looks on a white background.

Color Contrast Check

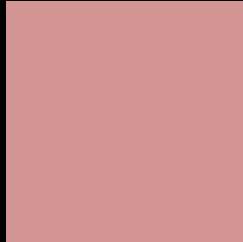
Large Text (above 18pt) WCAG AA × Fail

Any Text WCAG AA × Fail

Large Text (above 18pt) WCAG AAA × Fail

Any Text WCAG AAA × Fail

Black Background



This preview shows how the Decimal color 13800851 looks on a black background.

Color Contrast Check

Large Text (above 18pt) WCAG AA ✓ Pass

Any Text WCAG AA ✓ Pass

Large Text (above 18pt) WCAG AAA ✓ Pass

Any Text WCAG AAA ✓ Pass

If you want to check with other color combinations, try the [Color Contrast Checker](#).

Decimal 13800851 Background



This preview shows how black text looks on a background with the Decimal color 13800851.



This preview shows how white text looks on a background with the Decimal color 13800851.

Color Blindness Simulation

Color vision deficiency is a very complex topic, and I could not describe the different causes any better than Wikipedia does, so if you want to learn more, you should check out their [article about color blindness](#).


Dichromacy



Original Color
13800851

Protanopia
11183259

Deuteranopia
12361617



Tritanopia
13865886

Trichromacy



Original Color
13800851

Protanomaly
12165016

Deuteranomaly
12884882

Tritanomaly
13866138

Monochromacy



Original Color
13800851

Achromatopsia
10987431

Achromatomaly
12034208

CSS Examples

Text

The CSS property to change the color of the text to Decimal 13800851 is called "color". The color property can be set on classes, ids or directly on the HTML element.

This example shows how text in the color #D29593 looks like.

```
.text, #text, p{  
  color:#D29593  
}
```

If you want to add a text shadow in that color use the text-shadow property, you can generate a text shadow directly with our [CSS Text Shadow Generator](#).

Here you see how black text with a 4 pixel #D29593 colored shadow looks like.

```
.shadow{ text-shadow: 4px 4px 2px #D29593
}
```

Border

The CSS property to change the border of an element to Decimal 13800851 is called "border". The border property can be set on classes, ids or directly on the HTML element.

This example shows the color as border, it can be applied via the CSS property "border" or "border-color".

```
.border, #border, table{ border:4px solid
#D29593 }
```

If only the border color should be changed use the property `border-color`.

```
.border{ border-color:#D29593 }
```

If you want to add a box shadow in that color use:

Here you see how a box with a 4 pixel #D29593 colored shadow looks like.

```
.boxshadow{ -moz-box-shadow:4px 4px 4px  
4px #D29593; -webkit-box-shadow:4px 4px  
4px 4px #D29593; box-shadow:4px 4px 4px  
4px #D29593 }
```

Background

The CSS property to change the background color of an element to Decimal 13800851 is called "background". The background property can be set on classes, ids or directly on the HTML element.

```
.background, #background, body{  
background:#D29593 }
```

If only the background color should be changed can be used:

```
.background{ background-color:#D29593 }
```

This example shows the color as background, it is applied via the CSS property "background".

To optimize and compress your CSS code, you can use our [online CSS compressor and optimizer](#) based on csstidy. If you want to create a linear or radial gradient as background or border, check our [CSS Gradient Generator](#).

Hey! You found this booklet interesting? Support Converting Colors with the new Membership Option!

The pro membership hides all ads, plus gives you double the colors in the color bucket, and more awesome pro features!

[Learn more, Memberships starting at \\$2.50/m!](#)

**Follow me
on Twitter!**

@ConvertingColor