

# Converting Colors

Decimal(13801865)

Have a look what the booklet for  
Decimal(13801865) contains.

<b>Decimal(13801865)</b> .....	3
<i><b>Conversions</b></i> .....	4
<i><b>Details</b></i> .....	6
<i><b>Harmonies</b></i> .....	11
<i><b>Previews</b></i> .....	23
<i><b>Color Blindness Simulation</b></i> .....	26
<i><b>CSS Examples</b></i> .....	29

# **Color**

**Decimal(13801865)**

# Conversions

## Conversions Part 1

Format	Color
Hex	D29989
RGB	210, 153, 137
RGB Percent	82%, 60%, 54%
CMY	0.1765, 0.4000, 0.4627
CMYK	0.00, 0.27, 0.35, 0.18
HSL	13°, 45%, 68%
HSV	13°, 35%, 82%
XYZ	42.4849, 38.2902, 28.8185
YIQ	168.2190, 39.1080, 7.1080

# Conversions

## Conversions Part 2

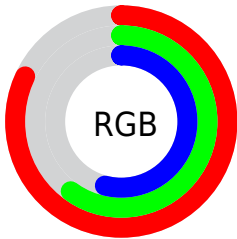
Format	Color
R <sub>Y</sub> B	210, 157, 137
Decimal	13801865
CIE Lab	68.23, 19.22, 16.82
CIE LCh	68, 25.541, 41.190
Yxy	38.2902, 0.3877, 0.3494
Android (android.graphics.Color)	4291991945 (0xFFD29989)
YUV	168.2190, -15.3910, 36.6419
Hunter-Lab	61.8791, 14.2660, 15.7027

# Details

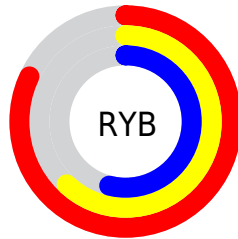
The Decimal color **13801865** is a light color, and the websafe version is hex **CC9999**. A complement of this color would be **9028306**, and the grayscale version is **11053224**.

A 20% lighter version of the original color is **16765118**, and **10118743** is the 20% darker color. If you saturate the color by 10%, you get **13797748**, and if you desaturate by 10%, it is **13805982**.

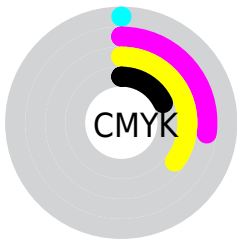
# Distribution



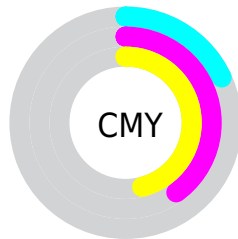
- Red (82%)
- Green (60%)
- Blue (54%)



- Red (82%)
- Yellow (62%)
- Blue (54%)



- Cyan (0%)
- Magenta (27%)
- Yellow (35%)
- Black (18%)



- Cyan (18%)
- Magenta (40%)
- Yellow (46%)

# Brightness & Saturation Gradients

These gradients show how the Decimal color 13801865 changes by changing the brightness by 10 percent. The first figure shows a shift by +10% for each color and the second figure -10%.

Similar to the brightness gradients but the following saturation gradients show a change of the Decimal color 13801865 by changing the saturation by 10% instead.



 13801865

 13801865

16777215

 11960176

 16765118

 10118743

 16772314

 8342848

 16777207

 6567466

 4923413

 3344896

 1572865

 0

 13801865

 13801865

13797748

13805982

13793375

13810355

13789258

13814472

13784885

13818845

13780768

13822962

13776651

13827071

13774336

13828095

# Harmonies

## Analogous

The Analogous color harmony consists of three colors that are next to each other on the color wheel.



13997726



13801865



12886139

# Triad

The Triadic color harmony groups three colors that are evenly spaced from another and form a triangle on the color wheel.



13801865



8041111



9873107

# Complementary

The Complementary color scheme is a pair of colors which are on the opposite of each other on the color wheel.



13801865



9028306

# Split Complementary

Split-complementary colors differ from the complementary color scheme. The scheme consists of three colors, the original color and two neighbors of the complement color.



7777745



13801865



6730670

# Square

The Square scheme is like the rectangle color scheme, but the four colors are evenly spaced on the color wheel.



13801865



9809539



6533828



11902409

# Rectangle

The Rectangle color scheme consists of four colors that form a rectangle on the color wheel.



13801865



11969912



6533828



9152724



# Sweetspot

The Sweet Spot groups the original color and five complimentary colors.



13801865



16772070



13797826



8418416



0



8421504



# Same Dimension

The Same Dimension uses a secret algorithm to generate beautiful new colors.



13801865



16755604



13811081



6905950



11019520



2689280



# Inverse Universe

The Inverse Universe completely reimagines the original color for something new.



9028306



9758975



9019090



6186601



33704

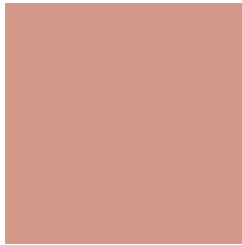


8233



# Previews

## White Background



This preview shows how the Decimal color 13801865 looks on a white background.

## Color Contrast Check

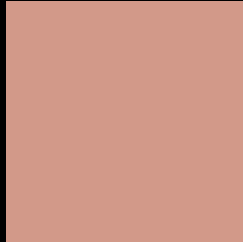
Large Text (above 18pt) WCAG AA × Fail

Any Text WCAG AA × Fail

Large Text (above 18pt) WCAG AAA × Fail

Any Text WCAG AAA × Fail

# Black Background



This preview shows how the Decimal color 13801865 looks on a black background.

## Color Contrast Check

Large Text (above 18pt) WCAG AA ✓ Pass

Any Text WCAG AA ✓ Pass

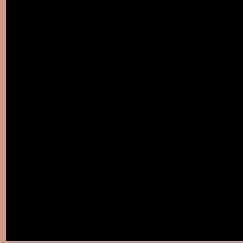
Large Text (above 18pt) WCAG AAA ✓ Pass

Any Text WCAG AAA ✓ Pass

If you want to check with other color combinations, try the [Color Contrast Checker](#).



## Decimal 13801865 Background



This preview shows how black text looks on a background with the Decimal color 13801865.




This preview shows how white text looks on a background with the Decimal color 13801865.

# Color Blindness Simulation

Color vision deficiency is a very complex topic, and I could not describe the different causes any better than Wikipedia does, so if you want to learn more, you should check out their [article about color blindness](#).

## Dichromacy





**Tritanopia**  
13932193

# Trichromacy



**Original Color**  
13801865

**Protanomaly**  
12362125

**Deuteranomaly**  
13081992

**Tritanomaly**  
13866904

# Monochromacy



**Original Color**  
13801865

**Achromatopsia**  
11053224

**Achromatomaly**  
12034973

# CSS Examples

## Text

The CSS property to change the color of the text to Decimal 13801865 is called "color". The color property can be set on classes, ids or directly on the HTML element.

This example shows how text in the color #D29989 looks like.

```
.text, #text, p{  
    color:#D29989  
}
```

If you want to add a text shadow in that color use the text-shadow property, you can generate a text shadow directly with our [CSS Text Shadow Generator](#).

Here you see how black text with a 4 pixel #D29989 colored shadow looks like.

```
.shadow{ text-shadow: 4px 4px 2px #D29989
}
```

## Border

The CSS property to change the border of an element to Decimal 13801865 is called "border". The border property can be set on classes, ids or directly on the HTML element.

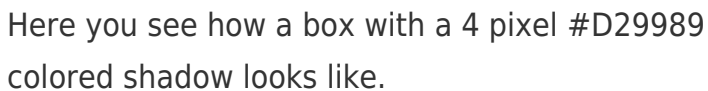
This example shows the color as border, it can be applied via the CSS property "border" or "border-color".

```
.border, #border, table{ border:4px solid
#D29989 }
```

If only the border color should be changed use the property `border-color`.

```
.border{ border-color:#D29989 }
```

If you want to add a box shadow in that color use:



Here you see how a box with a 4 pixel #D29989 colored shadow looks like.

```
.boxshadow{ -moz-box-shadow:4px 4px 4px  
4px #D29989; -webkit-box-shadow:4px 4px  
4px 4px #D29989; box-shadow:4px 4px 4px  
4px #D29989 }
```

# Background

The CSS property to change the background color of an element to Decimal 13801865 is called "background". The background property can be set on classes, ids or directly on the HTML element.

```
.background, #background, body{  
background:#D29989 }
```

If only the background color should be changed can be used:

```
.background{ background-color:#D29989 }
```

This example shows the color as background, it is applied via the CSS property "background".

To optimize and compress your CSS code, you can use our [online CSS compressor and optimizer](#) based on csstidy. If you want to create a linear or radial gradient as background or border, check our [CSS Gradient Generator](#).



Hey! You found this booklet interesting? Support Converting Colors with the new Membership Option!

The pro membership hides all ads, plus gives you double the colors in the color bucket, and more awesome pro features!

**[Learn more, Memberships starting at \\$2.50/m!](#)**

**Follow me  
on Twitter!**

@ConvertingColor