

Converting Colors

Decimal(13801881)

Have a look what the booklet for
Decimal(13801881) contains.

Decimal(13801881)	3
<i>Conversions</i>	4
<i>Details</i>	6
<i>Harmonies</i>	11
<i>Previews</i>	23
<i>Color Blindness Simulation</i>	26
<i>CSS Examples</i>	29

Color

Decimal(13801881)

Conversions

Conversions Part 1

Format	Color
Hex	D29999
RGB	210, 153, 153
RGB Percent	82%, 60%, 60%
CMY	0.1765, 0.4000, 0.4000
CMYK	0.00, 0.27, 0.27, 0.18
HSL	0°, 39%, 71%
HSV	0°, 27%, 82%
XYZ	43.7193, 38.7840, 35.3188
YIQ	170.0430, 33.9720, 12.0840

Conversions

Conversions Part 2

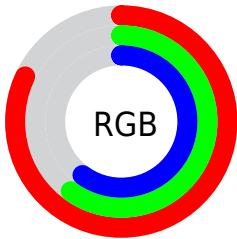
Format	Color
R_{YB}	210, 153, 153
Decimal	13801881
CIE _{Lab}	68.59, 21.33, 8.43
CIE _{LCh}	69, 22.941, 21.571
Yxy	38.7840, 0.3711, 0.3292
Android (android.graphics.Color)	4291991961 (0xFFD29999)
YUV	170.0430, -8.4022, 35.0423
Hunter-Lab	62.2768, 16.3255, 9.9689

Details

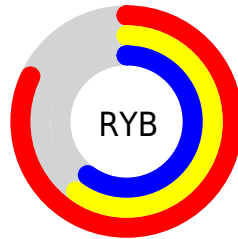
The Decimal color **13801881** is a light color, and the websafe version is hex **CC9999**. A complement of this color would be **10080978**, and the grayscale version is **11184810**.

A 20% lighter version of the original color is **16765135**, and **10118758** is the 20% darker color. If you saturate the color by 10%, you get **13796484**, and if you desaturate by 10%, it is **13807278**.

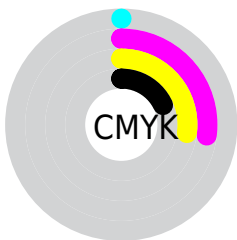
Distribution



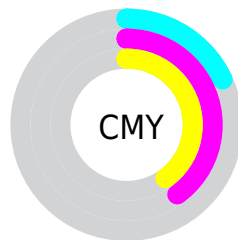
- Red (82%)
- Green (60%)
- Blue (60%)



- Red (82%)
- Yellow (60%)
- Blue (60%)



- Cyan (0%)
- Magenta (27%)
- Yellow (27%)
- Black (18%)



- Cyan (18%)
- Magenta (40%)
- Yellow (40%)

Brightness & Saturation Gradients

These gradients show how the Decimal color 13801881 changes by changing the brightness by 10 percent. The first figure shows a shift by +10% for each color and the second figure -10%.

Similar to the brightness gradients but the following saturation gradients show a change of the Decimal color 13801881 by changing the saturation by 10% instead.

 13801881

 13801881

16777215

 11960191

 16765135

 10118758

 16772331

 8342862

 6633015

 4988706

 3410188

 1900545

 0

 13801881

 13801881

 13796484

 13807278

 13791087

 13812675

 13785690

 13818072

 13780293

 13823469

 13774896

 13828095

 13769499

 13764102

 13762560

Harmonies

Analogous

The Analogous color harmony consists of three colors that are next to each other on the color wheel.



13474222



13801881



13409672

Triad

The Triadic color harmony groups three colors that are evenly spaced from another and form a triangle on the color wheel.



13801881



9416845



8891344

Complementary

The Complementary color scheme is a pair of colors which are on the opposite of each other on the color wheel.



13801881



10080978

Split Complementary

Split-complementary colors differ from the complementary color scheme. The scheme consists of three colors, the original color and two neighbors of the complement color.



7450823



13801881



7975841

Square

The Square scheme is like the rectangle color scheme, but the four colors are evenly spaced on the color wheel.



13801881



10988417



7189430



10724558

Rectangle

The Rectangle color scheme consists of four colors that form a rectangle on the color wheel.



13801881



12755584



7189430



8302030

Sweetspot

The Sweet Spot groups the original color and five complimentary colors.



13801881



16772075



13801938



8418163



0



8421504

Same Dimension

The Same Dimension uses a secret algorithm to generate beautiful new colors.



13801881



16755627



13809305



6905438



11010048



2686976

Inverse Universe

The Inverse Universe completely reimagines the original color for something new.



10080978



11272191



10073810



6187369



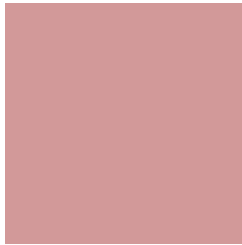
43176



10537

Previews

White Background



This preview shows how the Decimal color 13801881 looks on a white background.

Color Contrast Check

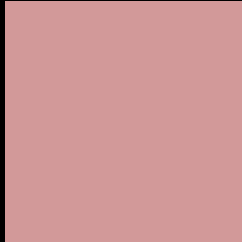
Large Text (above 18pt) WCAG AA × Fail

Any Text WCAG AA × Fail

Large Text (above 18pt) WCAG AAA × Fail

Any Text WCAG AAA × Fail

Black Background



This preview shows how the Decimal color 13801881 looks on a black background.

Color Contrast Check

Large Text (above 18pt) WCAG AA ✓ Pass

Any Text WCAG AA ✓ Pass

Large Text (above 18pt) WCAG AAA ✓ Pass

Any Text WCAG AAA ✓ Pass

If you want to check with other color combinations, try the [Color Contrast Checker](#).

Decimal 13801881 Background



This preview shows how black text looks on a background with the Decimal color 13801881.




This preview shows how white text looks on a background with the Decimal color 13801881.

Color Blindness Simulation

Color vision deficiency is a very complex topic, and I could not describe the different causes any better than Wikipedia does, so if you want to learn more, you should check out their [article about color blindness](#).

Dichromacy





Tritanopia
13866915

Trichromacy



Original Color
13801881

Protanomaly
12231326

Deuteranomaly
12951448

Tritanomaly
13867167

Monochromacy



Original Color
13801881

Achromatopsia
11184810

Achromatomaly
12166308

CSS Examples

Text

The CSS property to change the color of the text to Decimal 13801881 is called "color". The color property can be set on classes, ids or directly on the HTML element.

This example shows how text in the color #D29999 looks like.

```
.text, #text, p{  
    color:#D29999  
}
```

If you want to add a text shadow in that color use the text-shadow property, you can generate a text shadow directly with our [CSS Text Shadow Generator](#).

Here you see how black text with a 4 pixel #D29999 colored shadow looks like.

```
.shadow{ text-shadow: 4px 4px 2px #D29999
}
```

Border

The CSS property to change the border of an element to Decimal 13801881 is called "border". The border property can be set on classes, ids or directly on the HTML element.

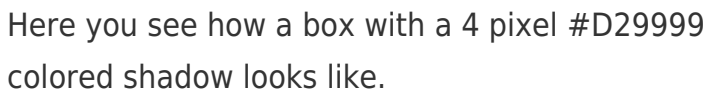
This example shows the color as border, it can be applied via the CSS property "border" or "border-color".

```
.border, #border, table{ border:4px solid
#D29999 }
```

If only the border color should be changed use the property `border-color`.

```
.border{ border-color:#D29999 }
```

If you want to add a box shadow in that color use:



Here you see how a box with a 4 pixel #D29999 colored shadow looks like.

```
.boxshadow{ -moz-box-shadow:4px 4px 4px  
4px #D29999; -webkit-box-shadow:4px 4px  
4px 4px #D29999; box-shadow:4px 4px 4px  
4px #D29999 }
```

Background

The CSS property to change the background color of an element to Decimal 13801881 is called "background". The background property can be set on classes, ids or directly on the HTML element.

```
.background, #background, body{  
background:#D29999 }
```

If only the background color should be changed can be used:

```
.background{ background-color:#D29999 }
```

This example shows the color as background, it is applied via the CSS property "background".

To optimize and compress your CSS code, you can use our [online CSS compressor and optimizer](#) based on csstidy. If you want to create a linear or radial gradient as background or border, check our [CSS Gradient Generator](#).

Hey! You found this booklet interesting? Support Converting Colors with the new Membership Option!

The pro membership hides all ads, plus gives you double the colors in the color bucket, and more awesome pro features!

[Learn more, Memberships starting at \\$2.50/m!](#)

**Follow me
on Twitter!**

@ConvertingColor