

# Converting Colors

Decimal(13802383)

Have a look what the booklet for  
Decimal(13802383) contains.

<b>Decimal(13802383)</b> .....	3
<i><b>Conversions</b></i> .....	4
<i><b>Details</b></i> .....	6
<i><b>Harmonies</b></i> .....	11
<i><b>Previews</b></i> .....	23
<i><b>Color Blindness Simulation</b></i> .....	26
<i><b>CSS Examples</b></i> .....	29

# **Color**

**Decimal(13802383)**

# Conversions

## Conversions Part 1

<b>Format</b>	<b>Color</b>
Hex	D29B8F
RGB	210, 155, 143
RGB Percent	82%, 61%, 56%
CMY	0.1765, 0.3922, 0.4392
CMYK	0.00, 0.26, 0.32, 0.18
HSL	11°, 43%, 69%
HSV	11°, 32%, 82%
XYZ	43.2576, 39.1275, 31.2590
YIQ	170.0770, 36.6320, 7.9280

# Conversions

## Conversions Part 2

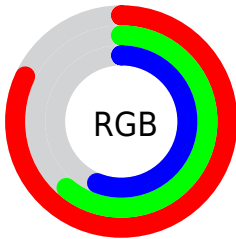
Format	Color
R <sub>Y</sub> B	210, 158, 143
Decimal	13802383
CIE Lab	68.84, 18.90, 14.34
CIE LCh	69, 23.725, 37.201
Yxy	39.1275, 0.3806, 0.3443
Android (android.graphics.Color)	4291992463 (0xFFD29B8F)
YUV	170.0770, -13.3490, 35.0125
Hunter-Lab	62.5520, 13.9751, 14.1574

# Details

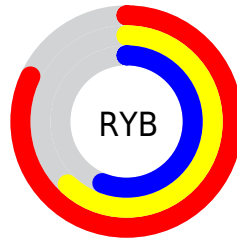
The Decimal color **13802383** is a light color, and the websafe version is hex **CC9999**. A complement of this color would be **9422546**, and the grayscale version is **11184810**.

A 20% lighter version of the original color is **16765637**, and **10119261** is the 20% darker color. If you saturate the color by 10%, you get **13798010**, and if you desaturate by 10%, it is **13806756**.

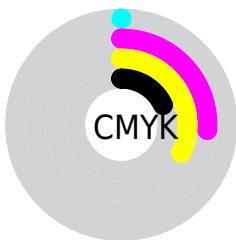
# Distribution



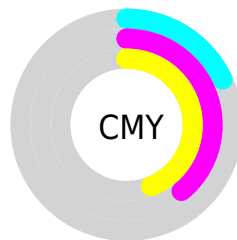
- Red (82%)
- Green (61%)
- Blue (56%)



- Red (82%)
- Yellow (62%)
- Blue (56%)



- Cyan (0%)
- Magenta (26%)
- Yellow (32%)
- Black (18%)



- Cyan (18%)
- Magenta (39%)
- Yellow (44%)

# Brightness & Saturation Gradients

These gradients show how the Decimal color 13802383 changes by changing the brightness by 10 percent. The first figure shows a shift by +10% for each color and the second figure -10%.

Similar to the brightness gradients but the following saturation gradients show a change of the Decimal color 13802383 by changing the saturation by 10% instead.



 13802383

 13802383

16777215

 11960693

 16765637

 10119261

 16772833

 8343365

16777213

 6633519

 4923930

 3410944

 1769473

 0

 13802383

 13802383

 13798010

 13806756

 13793637

 13811129

 13789008

 13815758

 13784635

 13820131

 13780262

 13824504

 13775889

 13828095

 13772288

# Harmonies

## Analogous

The Analogous color harmony consists of three colors that are next to each other on the color wheel.



13867171



13802383



13017473

# Triad

The Triadic color harmony groups three colors that are evenly spaced from another and form a triangle on the color wheel.



13802383



8631191



9808082

# Complementary

The Complementary color scheme is a pair of colors which are on the opposite of each other on the color wheel.



13802383



9422546

# Split Complementary

Split-complementary colors differ from the complementary color scheme. The scheme consists of three colors, the original color and two neighbors of the complement color.



7974863



13802383



7320749

# Square

The Square scheme is like the rectangle color scheme, but the four colors are evenly spaced on the color wheel.



13802383



10203013



6992833



11706826

# Rectangle

The Rectangle color scheme consists of four colors that form a rectangle on the color wheel.



13802383



12232317



6992833



9153490

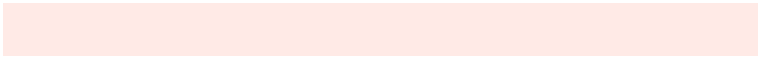


# Sweetspot

The Sweet Spot groups the original color and five complimentary colors.



13802383



16771814



13799367



8418160



0



8421504



# Same Dimension

The Same Dimension uses a secret algorithm to generate beautiful new colors.



13802383



16756638



13810831



6905950



11017728



2688768

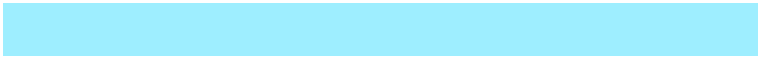


# Inverse Universe

The Inverse Universe completely reimagines the original color for something new.



9422546



10415871



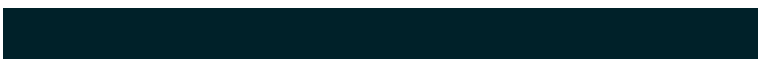
9414098



6186857



35496



8489



# Previews

## White Background



This preview shows how the Decimal color 13802383 looks on a white background.

## Color Contrast Check

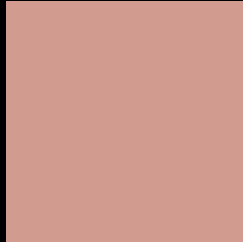
Large Text (above 18pt) WCAG AA × Fail

Any Text WCAG AA × Fail

Large Text (above 18pt) WCAG AAA × Fail

Any Text WCAG AAA × Fail

# Black Background



This preview shows how the Decimal color 13802383 looks on a black background.

## Color Contrast Check

Large Text (above 18pt) WCAG AA ✓ Pass

Any Text WCAG AA ✓ Pass

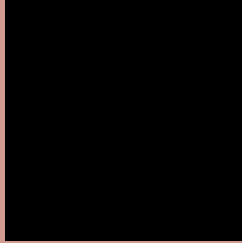
Large Text (above 18pt) WCAG AAA ✓ Pass

Any Text WCAG AAA ✓ Pass

If you want to check with other color combinations, try the [Color Contrast Checker](#).



## Decimal 13802383 Background



This preview shows how black text looks on a background with the Decimal color 13802383.




This preview shows how white text looks on a background with the Decimal color 13802383.

# Color Blindness Simulation

Color vision deficiency is a very complex topic, and I could not describe the different causes any better than Wikipedia does, so if you want to learn more, you should check out their [article about color blindness](#).

## Dichromacy





**Tritanopia**  
13932708

# Trichromacy



**Original Color**  
13802383

**Protanomaly**  
12362643

**Deuteranomaly**  
13148046

**Tritanomaly**  
13867420

# Monochromacy



**Original Color**  
13802383

**Achromatopsia**  
11184810

**Achromatomaly**  
12166560

# CSS Examples

## Text

The CSS property to change the color of the text to Decimal 13802383 is called "color". The color property can be set on classes, ids or directly on the HTML element.

This example shows how text in the color #D29B8F looks like.

```
.text, #text, p{  
    color:#D29B8F  
}
```

If you want to add a text shadow in that color use the text-shadow property, you can generate a text shadow directly with our [CSS Text Shadow Generator](#).

Here you see how black text with a 4 pixel #D29B8F colored shadow looks like.

```
.shadow{ text-shadow: 4px 4px 2px #D29B8F
}
```

## Border

The CSS property to change the border of an element to Decimal 13802383 is called "border". The border property can be set on classes, ids or directly on the HTML element.

This example shows the color as border, it can be applied via the CSS property "border" or "border-color".

```
.border, #border, table{ border:4px solid
#D29B8F }
```

If only the border color should be changed use the property `border-color`.

```
.border{ border-color:#D29B8F }
```

If you want to add a box shadow in that color use:

Here you see how a box with a 4 pixel #D29B8F colored shadow looks like.

```
.boxshadow{ -moz-box-shadow:4px 4px 4px  
4px #D29B8F; -webkit-box-shadow:4px 4px  
4px 4px #D29B8F; box-shadow:4px 4px 4px  
4px #D29B8F }
```

# Background

The CSS property to change the background color of an element to Decimal 13802383 is called "background". The background property can be set on classes, ids or directly on the HTML element.

```
.background, #background, body{  
background:#D29B8F }
```

If only the background color should be changed can be used:

```
.background{ background-color:#D29B8F }
```

This example shows the color as background, it is applied via the CSS property "background".

To optimize and compress your CSS code, you can use our [online CSS compressor and optimizer](#) based on csstidy. If you want to create a linear or radial gradient as background or border, check our [CSS Gradient Generator](#).



Hey! You found this booklet interesting? Support Converting Colors with the new Membership Option!

The pro membership hides all ads, plus gives you double the colors in the color bucket, and more awesome pro features!

**[Learn more, Memberships starting at \\$2.50/m!](#)**

**Follow me  
on Twitter!**

@ConvertingColor