

# Converting Colors

Decimal(13803904)

Have a look what the booklet for  
Decimal(13803904) contains.

|  |    |
|--|----|
| <b>Decimal(13803904)</b> .....                 | 3  |
| <i><b>Conversions</b></i> .....                | 4  |
| <i><b>Details</b></i> .....                    | 6  |
| <i><b>Harmonies</b></i> .....                  | 11 |
| <i><b>Previews</b></i> .....                   | 23 |
| <i><b>Color Blindness Simulation</b></i> ..... | 26 |
| <i><b>CSS Examples</b></i> .....               | 29 |

# **Color**

**Decimal(13803904)**

# Conversions

## Conversions Part 1

| Format      | Color                     |
|-------------|---------------------------|
| Hex         | D2A180                    |
| RGB         | 210, 161, 128             |
| RGB Percent | 82%, 63%, 50%             |
| CMY         | 0.1765, 0.3686, 0.4980    |
| CMYK        | 0.00, 0.23, 0.39, 0.18    |
| HSL         | 24°, 48%, 66%             |
| HSV         | 24°, 39%, 82%             |
| XYZ         | 43.2195, 40.7499, 26.0097 |
| YIQ         | 171.8890, 39.7970, 0.1250 |

# Conversions

## Conversions Part 2

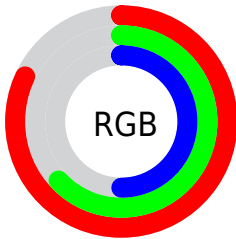
| <b>Format</b>                       | <b>Color</b>                   |
|-------------------------------------|--------------------------------|
| <b>R<sub>YB</sub></b>               | 210, 183, 128                  |
| Decimal                             | 13803904                       |
| CIE Lab                             | 70.00, 13.80, 24.18            |
| CIE LCh                             | 70, 27.841, 60.291             |
| Yxy                                 | 40.7499, 0.3930,<br>0.3705     |
| Android<br>(android.graphics.Color) | 4291993984<br>(0xFFD2A180)     |
| YUV                                 | 171.8890, -21.6373,<br>33.4233 |
| Hunter-Lab                          | 63.8356, 9.1399,<br>20.5274    |

# Details

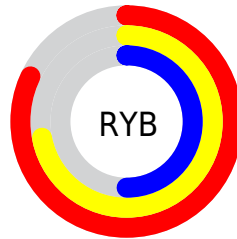
The Decimal color **13803904** is a light color, and the websafe version is hex **CC9966**. A complement of this color would be **8434130**, and the grayscale version is **11316396**.

A 20% lighter version of the original color is **16767157**, and **10120527** is the 20% darker color. If you saturate the color by 10%, you get **13800555**, and if you desaturate by 10%, it is **13807253**.

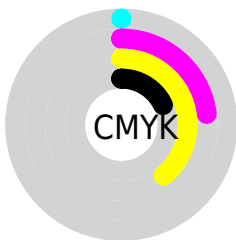
# Distribution



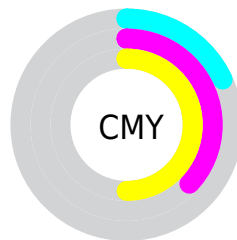
- Red (82%)
- Green (63%)
- Blue (50%)



- Red (82%)
- Yellow (72%)
- Blue (50%)



- Cyan (0%)
- Magenta (23%)
- Yellow (39%)
- Black (18%)



- Cyan (18%)
- Magenta (37%)
- Yellow (50%)

# Brightness & Saturation Gradients

These gradients show how the Decimal color 13803904 changes by changing the brightness by 10 percent. The first figure shows a shift by +10% for each color and the second figure -10%.

Similar to the brightness gradients but the following saturation gradients show a change of the Decimal color 13803904 by changing the saturation by 10% instead.



 13803904

 13803904

16777215

 11962215

 16767157

 10120527

 16774353

 8344887

 16777197

 6569505

 4859916

 3281664

 1769473

 0

 13803904

 13803904

 13800555

 13807253

 13797462

 13810346

 13794113

 13813695

 13791020

 13816788

 13787671

 13820137

 13784578

 13823230

 13784320

 13826559

 13828095

# Harmonies

## Analogous

The Analogous color harmony consists of three colors that are next to each other on the color wheel.



14523027



13803904



12429945

# Triad

The Triadic color harmony groups three colors that are evenly spaced from another and form a triangle on the color wheel.



13803904



6994346



11510999

# Complementary

The Complementary color scheme is a pair of colors which are on the opposite of each other on the color wheel.



13803904



8434130

# Split Complementary

Split-complementary colors differ from the complementary color scheme. The scheme consists of three colors, the original color and two neighbors of the complement color.



9154013



13803904



6142148

# Square

The Square scheme is like the rectangle color scheme, but the four colors are evenly spaced on the color wheel.



13803904



8763281



7058646



13409733

# Rectangle

The Rectangle color scheme consists of four colors that form a rectangle on the color wheel.



13803904



11251579



7058646



10790874

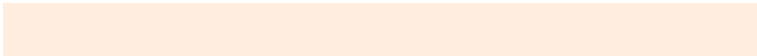


# Sweetspot

The Sweet Spot groups the original color and five complimentary colors.



13803904



16772576



13795505



8418670



0



8421504



# Same Dimension

The Same Dimension uses a secret algorithm to generate beautiful new colors.



13803904



16758663



13814400



6906462



11027456



2691072

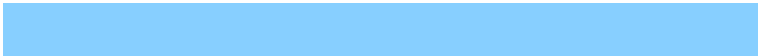


# Inverse Universe

The Inverse Universe completely reimagines the original color for something new.



8434130



8900607



8423634



6186089



26024



6185



# Previews

## White Background



This preview shows how the Decimal color 13803904 looks on a white background.

## Color Contrast Check

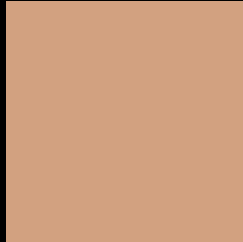
Large Text (above 18pt) WCAG AA × Fail

Any Text WCAG AA × Fail

Large Text (above 18pt) WCAG AAA × Fail

Any Text WCAG AAA × Fail

# Black Background



This preview shows how the Decimal color 13803904 looks on a black background.

## Color Contrast Check

Large Text (above 18pt) WCAG AA ✓ Pass

Any Text WCAG AA ✓ Pass

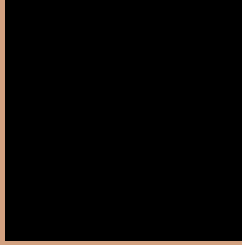
Large Text (above 18pt) WCAG AAA ✓ Pass

Any Text WCAG AAA ✓ Pass

If you want to check with other color combinations, try the [Color Contrast Checker](#).



## Decimal 13803904 Background



This preview shows how black text looks on a background with the Decimal color 13803904.



This preview shows how white text looks on a background with the Decimal color 13803904.

# Color Blindness Simulation

Color vision deficiency is a very complex topic, and I could not describe the different causes any better than Wikipedia does, so if you want to learn more, you should check out their [article about color blindness](#).

## Dichromacy





**Tritanopia**  
14064808

# Trichromacy



**Original Color**  
13803904

**Protanomaly**  
12691331

**Deuteranomaly**  
13476735

**Tritanomaly**  
13999769

# Monochromacy



**Original Color**  
13803904

**Achromatopsia**  
11316396

**Achromatomaly**  
12232860

# CSS Examples

## Text

The CSS property to change the color of the text to Decimal 13803904 is called "color". The color property can be set on classes, ids or directly on the HTML element.

This example shows how text in the color #D2A180 looks like.

```
.text, #text, p{  
    color:#D2A180  
}
```

If you want to add a text shadow in that color use the text-shadow property, you can generate a text shadow directly with our [CSS Text Shadow Generator](#).

Here you see how black text with a 4 pixel #D2A180 colored shadow looks like.

```
.shadow{ text-shadow: 4px 4px 2px #D2A180
}
```

## Border

The CSS property to change the border of an element to Decimal 13803904 is called "border". The border property can be set on classes, ids or directly on the HTML element.

This example shows the color as border, it can be applied via the CSS property "border" or "border-color".

```
.border, #border, table{ border:4px solid
#D2A180 }
```

If only the border color should be changed use the property `border-color`.

```
.border{ border-color:#D2A180 }
```

If you want to add a box shadow in that color use:

Here you see how a box with a 4 pixel #D2A180 colored shadow looks like.

```
.boxshadow{ -moz-box-shadow:4px 4px 4px  
4px #D2A180; -webkit-box-shadow:4px 4px  
4px 4px #D2A180; box-shadow:4px 4px 4px  
4px #D2A180 }
```

# Background

The CSS property to change the background color of an element to Decimal 13803904 is called "background". The background property can be set on classes, ids or directly on the HTML element.

```
.background, #background, body{  
background:#D2A180 }
```

If only the background color should be changed can be used:

```
.background{ background-color:#D2A180 }
```

This example shows the color as background, it is applied via the CSS property "background".

To optimize and compress your CSS code, you can use our [online CSS compressor and optimizer](#) based on csstidy. If you want to create a linear or radial gradient as background or border, check our [CSS Gradient Generator](#).



Hey! You found this booklet interesting? Support Converting Colors with the new Membership Option!

The pro membership hides all ads, plus gives you double the colors in the color bucket, and more awesome pro features!

**[Learn more, Memberships starting at \\$2.50/m!](#)**

**Follow me  
on Twitter!**

@ConvertingColor