

Converting Colors

Decimal(13804165)

Have a look what the booklet for
Decimal(13804165) contains.

Decimal(13804165)	3
<i>Conversions</i>	4
<i>Details</i>	6
<i>Harmonies</i>	11
<i>Previews</i>	23
<i>Color Blindness Simulation</i>	26
<i>CSS Examples</i>	29

Color

Decimal(13804165)

Conversions

Conversions Part 1

Format	Color
Hex	D2A285
RGB	210, 162, 133
RGB Percent	82%, 64%, 52%
CMY	0.1765, 0.3647, 0.4784
CMYK	0.00, 0.23, 0.37, 0.18
HSL	23°, 46%, 67%
HSV	23°, 37%, 82%
XYZ	43.7323, 41.2358, 27.8447
YIQ	173.0460, 37.9170, 1.1570

Conversions

Conversions Part 2

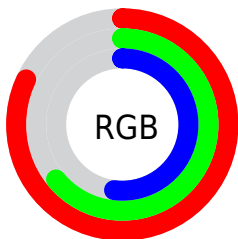
Format	Color
R _Y B	210, 180, 133
Decimal	13804165
CIE Lab	70.34, 13.85, 21.92
CIE LCh	70, 25.923, 57.718
Yxy	41.2358, 0.3877, 0.3655
Android (android.graphics.Color)	4291994245 (0xFFD2A285)
YUV	173.0460, -19.7427, 32.4087
Hunter-Lab	64.2151, 9.1873, 19.2415

Details

The Decimal color **13804165** is a light color, and the websafe version is hex **CC9966**. A complement of this color would be **8762834**, and the grayscale version is **11382189**.

A 20% lighter version of the original color is **16767418**, and **10120787** is the 20% darker color. If you saturate the color by 10%, you get **13800816**, and if you desaturate by 10%, it is **13807514**.

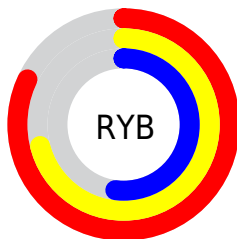
Distribution



Red (82%)

Green (64%)

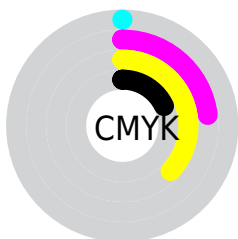
Blue (52%)



Red (82%)

Yellow (71%)

Blue (52%)

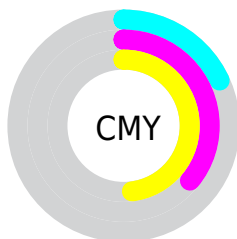


Cyan (0%)

Magenta (23%)

Yellow (37%)

Black (18%)



Cyan (18%)

Magenta (36%)

Yellow (48%)

Brightness & Saturation Gradients

These gradients show how the Decimal color 13804165 changes by changing the brightness by 10 percent. The first figure shows a shift by +10% for each color and the second figure -10%.

Similar to the brightness gradients but the following saturation gradients show a change of the Decimal color 13804165 by changing the saturation by 10% instead.

 13804165

 13804165

16777215

 11962476

 16767418

 10120787

 16774614

 8345148

 16777202

 6635046

 4925457

 3347200

 1835008

 0

 13804165

 13804165

 13800816

 13807514

 13797467

 13810863

 13794118

 13814212

 13790769

 13817561

 13787420

 13820910

 13783815

 13824511

 13782784

 13827839

 13828095

Harmonies

Analogous

The Analogous color harmony consists of three colors that are next to each other on the color wheel.



14458007



13804165



12561021

Triad

The Triadic color harmony groups three colors that are evenly spaced from another and form a triangle on the color wheel.



13804165



7518633



11380694

Complementary

The Complementary color scheme is a pair of colors which are on the opposite of each other on the color wheel.



13804165



8762834

Split Complementary

Split-complementary colors differ from the complementary color scheme. The scheme consists of three colors, the original color and two neighbors of the complement color.



9220059



13804165



6732225

Square

The Square scheme is like the rectangle color scheme, but the four colors are evenly spaced on the color wheel.



13804165



9156498



7386579



13213637

Rectangle

The Rectangle color scheme consists of four colors that form a rectangle on the color wheel.



13804165



11513727



7386579



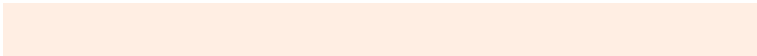
10725849

Sweetspot

The Sweet Spot groups the original color and five complimentary colors.



13804165



16772835



13796790



8418671



0



8421504

Same Dimension

The Same Dimension uses a secret algorithm to generate beautiful new colors.



13804165



16759183



13813893



6906462



11026176



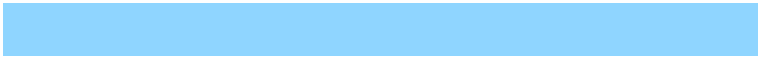
2690816

Inverse Universe

The Inverse Universe completely reimagines the original color for something new.



8762834



9426431



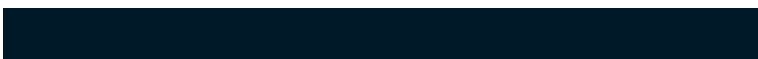
8753106



6186345



27048



6441

Previews

White Background



This preview shows how the Decimal color 13804165 looks on a white background.

Color Contrast Check

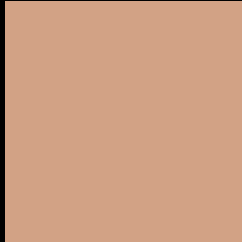
Large Text (above 18pt) WCAG AA × Fail

Any Text WCAG AA × Fail

Large Text (above 18pt) WCAG AAA × Fail

Any Text WCAG AAA × Fail

Black Background



This preview shows how the Decimal color 13804165 looks on a black background.

Color Contrast Check

Large Text (above 18pt) WCAG AA ✓ Pass

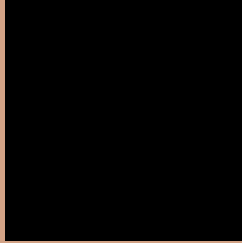
Any Text WCAG AA ✓ Pass

Large Text (above 18pt) WCAG AAA ✓ Pass

Any Text WCAG AAA ✓ Pass

If you want to check with other color combinations, try the [Color Contrast Checker](#).

Decimal 13804165 Background



This preview shows how black text looks on a background with the Decimal color 13804165.




This preview shows how white text looks on a background with the Decimal color 13804165.

Color Blindness Simulation

Color vision deficiency is a very complex topic, and I could not describe the different causes any better than Wikipedia does, so if you want to learn more, you should check out their [article about color blindness](#).

Dichromacy





Tritanopia
14065065

Trichromacy



Original Color
13804165

Protanomaly
12691592

Deuteranomaly
13476996

Tritanomaly
14000028

Monochromacy



Original Color
13804165

Achromatopsia
11382189

Achromatomaly
12233118

CSS Examples

Text

The CSS property to change the color of the text to Decimal 13804165 is called "color". The color property can be set on classes, ids or directly on the HTML element.

This example shows how text in the color #D2A285 looks like.

```
.text, #text, p{  
    color:#D2A285  
}
```

If you want to add a text shadow in that color use the text-shadow property, you can generate a text shadow directly with our [CSS Text Shadow Generator](#).

Here you see how black text with a 4 pixel #D2A285 colored shadow looks like.

```
.shadow{ text-shadow: 4px 4px 2px #D2A285
}
```

Border

The CSS property to change the border of an element to Decimal 13804165 is called "border". The border property can be set on classes, ids or directly on the HTML element.

This example shows the color as border, it can be applied via the CSS property "border" or "border-color".

```
.border, #border, table{ border:4px solid
#D2A285 }
```

If only the border color should be changed use the property `border-color`.

```
.border{ border-color:#D2A285 }
```

If you want to add a box shadow in that color use:

Here you see how a box with a 4 pixel #D2A285 colored shadow looks like.

```
.boxshadow{ -moz-box-shadow:4px 4px 4px  
4px #D2A285; -webkit-box-shadow:4px 4px  
4px 4px #D2A285; box-shadow:4px 4px 4px  
4px #D2A285 }
```

Background

The CSS property to change the background color of an element to Decimal 13804165 is called "background". The background property can be set on classes, ids or directly on the HTML element.

```
.background, #background, body{  
background:#D2A285 }
```

If only the background color should be changed can be used:

```
.background{ background-color:#D2A285 }
```

This example shows the color as background, it is applied via the CSS property "background".

To optimize and compress your CSS code, you can use our [online CSS compressor and optimizer](#) based on csstidy. If you want to create a linear or radial gradient as background or border, check our [CSS Gradient Generator](#).

Hey! You found this booklet interesting? Support Converting Colors with the new Membership Option!

The pro membership hides all ads, plus gives you double the colors in the color bucket, and more awesome pro features!

[Learn more, Memberships starting at \\$2.50/m!](#)

**Follow me
on Twitter!**

@ConvertingColor