

# Converting Colors

Decimal(13804190)

Have a look what the booklet for  
Decimal(13804190) contains.

<b>Decimal(13804190)</b> .....	3
<i><b>Conversions</b></i> .....	4
<i><b>Details</b></i> .....	6
<i><b>Harmonies</b></i> .....	11
<i><b>Previews</b></i> .....	23
<i><b>Color Blindness Simulation</b></i> .....	26
<i><b>CSS Examples</b></i> .....	29

# **Color**

**Decimal(13804190)**

# Conversions

## Conversions Part 1

Format	Color
Hex	D2A29E
RGB	210, 162, 158
RGB Percent	82%, 64%, 62%
CMY	0.1765, 0.3647, 0.3804
CMYK	0.00, 0.23, 0.25, 0.18
HSL	5°, 37%, 72%
HSV	5°, 25%, 82%
XYZ	45.6702, 42.0109, 38.0496
YIQ	175.8960, 29.8920, 8.9320

# Conversions

## Conversions Part 2

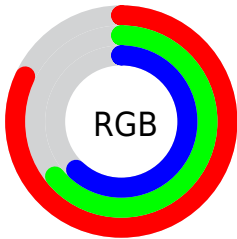
Format	Color
R <sub>Y</sub> B	210, 162, 158
Decimal	13804190
CIE Lab	70.88, 17.15, 8.92
CIE LCh	71, 19.327, 27.478
Yxy	42.0109, 0.3632, 0.3341
Android (android.graphics.Color)	4291994270 (0xFFD2A29E)
YUV	175.8960, -8.8227, 29.9092
Hunter-Lab	64.8158, 12.3461, 10.5654

# Details

The Decimal color **13804190** is a light color, and the websafe version is hex **CC9999**. A complement of this color would be **10407634**, and the grayscale version is **11579568**.

A 20% lighter version of the original color is **16767445**, and **10186347** is the 20% darker color. If you saturate the color by 10%, you get **13799305**, and if you desaturate by 10%, it is **13809075**.

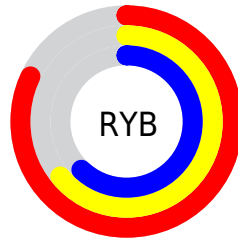
# Distribution



Red (82%)

Green (64%)

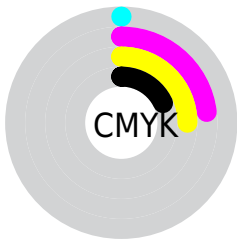
Blue (62%)



Red (82%)

Yellow (64%)

Blue (62%)

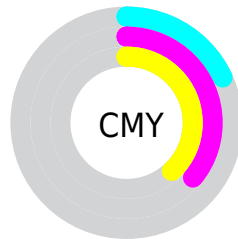


Cyan (0%)

Magenta (23%)

Yellow (25%)

Black (18%)



Cyan (18%)

Magenta (36%)

Yellow (38%)

# Brightness & Saturation Gradients

These gradients show how the Decimal color 13804190 changes by changing the brightness by 10 percent. The first figure shows a shift by +10% for each color and the second figure -10%.

Similar to the brightness gradients but the following saturation gradients show a change of the Decimal color 13804190 by changing the saturation by 10% instead.



 13804190

 13804190

16777215

 11962500

 16767445

 10186347

 16774897

 8410707

 6700604

 5056550

 3478289

 2162688

 0

 13804190

 13804190

 13799305

 13809075

 13794164

 13814216

 13789279

 13819101

 13784138

 13824242

 13779253

 13828095

 13774368

 13769227

 13766656

# Harmonies

## Analogous

The Analogous color harmony consists of three colors that are next to each other on the color wheel.



13607344



13804190



13346448

# Triad

The Triadic color harmony groups three colors that are evenly spaced from another and form a triangle on the color wheel.



13804190



9811354



9940944

# Complementary

The Complementary color scheme is a pair of colors which are on the opposite of each other on the color wheel.



13804190



10407634

# Split Complementary

Split-complementary colors differ from the complementary color scheme. The scheme consists of three colors, the original color and two neighbors of the complement color.



8697034



13804190



8763563

# Square

The Square scheme is like the rectangle color scheme, but the four colors are evenly spaced on the color wheel.



13804190



11186574



8304573



11512269

# Rectangle

The Rectangle color scheme consists of four colors that form a rectangle on the color wheel.



13804190



12757643



8304573



9482703

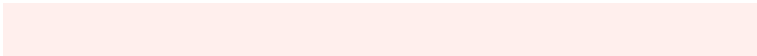


# Sweetspot

The Sweet Spot groups the original color and five complimentary colors.



13804190



16773101



13803215



8418933



0



8421504



# Same Dimension

The Same Dimension uses a secret algorithm to generate beautiful new colors.



13804190



16758963



13810590



6905694



11013376



2687744



# Inverse Universe

The Inverse Universe completely reimagines the original color for something new.



10407634



11794943



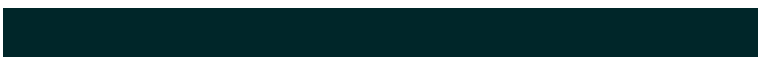
10401234



6187113



39848

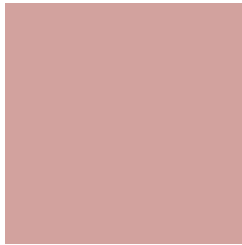


9769



# Previews

## White Background



This preview shows how the Decimal color 13804190 looks on a white background.

## Color Contrast Check

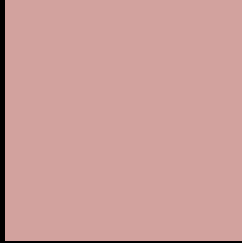
Large Text (above 18pt) WCAG AA × Fail

Any Text WCAG AA × Fail

Large Text (above 18pt) WCAG AAA × Fail

Any Text WCAG AAA × Fail

# Black Background



This preview shows how the Decimal color 13804190 looks on a black background.

## Color Contrast Check

Large Text (above 18pt) WCAG AA ✓ Pass

Any Text WCAG AA ✓ Pass

Large Text (above 18pt) WCAG AAA ✓ Pass

Any Text WCAG AAA ✓ Pass

If you want to check with other color combinations, try the [Color Contrast Checker](#).



## Decimal 13804190 Background



This preview shows how black text looks on a background with the Decimal color 13804190.



This preview shows how white text looks on a background with the Decimal color 13804190.

# Color Blindness Simulation

Color vision deficiency is a very complex topic, and I could not describe the different causes any better than Wikipedia does, so if you want to learn more, you should check out their [article about color blindness](#).


## Dichromacy



**Original Color**  
13804190

**Protanopia**  
11775396

**Deuteranopia**  
12953757



**Tritanopia**  
13934764

# Trichromacy



**Original Color**  
13804190

**Protanomaly**  
12495266

**Deuteranomaly**  
13280925

**Tritanomaly**  
13869479

# Monochromacy



**Original Color**  
13804190

**Achromatopsia**  
11579568

**Achromatomaly**  
12364713

# CSS Examples

## Text

The CSS property to change the color of the text to Decimal 13804190 is called "color". The color property can be set on classes, ids or directly on the HTML element.

This example shows how text in the color #D2A29E looks like.

```
.text, #text, p{  
  color:#D2A29E  
}
```

If you want to add a text shadow in that color use the text-shadow property, you can generate a text shadow directly with our [CSS Text Shadow Generator](#).

Here you see how black text with a 4 pixel #D2A29E colored shadow looks like.

```
.shadow{ text-shadow: 4px 4px 2px #D2A29E
}
```

## Border

The CSS property to change the border of an element to Decimal 13804190 is called "border". The border property can be set on classes, ids or directly on the HTML element.

This example shows the color as border, it can be applied via the CSS property "border" or "border-color".

```
.border, #border, table{ border:4px solid
#D2A29E }
```

If only the border color should be changed use the property `border-color`.

```
.border{ border-color:#D2A29E }
```

If you want to add a box shadow in that color use:

Here you see how a box with a 4 pixel #D2A29E colored shadow looks like.

```
.boxshadow{ -moz-box-shadow:4px 4px 4px  
4px #D2A29E; -webkit-box-shadow:4px 4px  
4px 4px #D2A29E; box-shadow:4px 4px 4px  
4px #D2A29E }
```

# Background

The CSS property to change the background color of an element to Decimal 13804190 is called "background". The background property can be set on classes, ids or directly on the HTML element.

```
.background, #background, body{  
background:#D2A29E }
```

If only the background color should be changed can be used:

```
.background{ background-color:#D2A29E }
```

This example shows the color as background, it is applied via the CSS property "background".

To optimize and compress your CSS code, you can use our [online CSS compressor and optimizer](#) based on csstidy. If you want to create a linear or radial gradient as background or border, check our [CSS Gradient Generator](#).



Hey! You found this booklet interesting? Support Converting Colors with the new Membership Option!

The pro membership hides all ads, plus gives you double the colors in the color bucket, and more awesome pro features!

**[Learn more, Memberships starting at \\$2.50/m!](#)**

**Follow me  
on Twitter!**

@ConvertingColor