

Converting Colors

Decimal(13804449)

Have a look what the booklet for
Decimal(13804449) contains.

Decimal(13804449)	3
<i>Conversions</i>	4
<i>Details</i>	6
<i>Harmonies</i>	11
<i>Previews</i>	23
<i>Color Blindness Simulation</i>	26
<i>CSS Examples</i>	29

Color

Decimal(13804449)

Conversions

Conversions Part 1

Format	Color
Hex	D2A3A1
RGB	210, 163, 161
RGB Percent	82%, 64%, 63%
CMY	0.1765, 0.3608, 0.3686
CMYK	0.00, 0.22, 0.23, 0.18
HSL	2°, 35%, 73%
HSV	2°, 23%, 82%
XYZ	46.1086, 42.4692, 39.4854
YIQ	176.8250, 28.6540, 9.3420

Conversions

Conversions Part 2

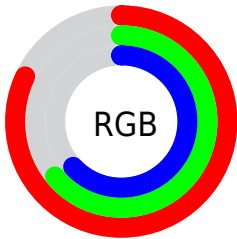
Format	Color
R _Y B	210, 163, 161
Decimal	13804449
CIE Lab	71.19, 17.04, 7.71
CIE LCh	71, 18.702, 24.347
Yxy	42.4692, 0.3600, 0.3316
Android (android.graphics.Color)	4291994529 (0xFFD2A3A1)
YUV	176.8250, -7.8017, 29.0945
Hunter-Lab	65.1684, 12.2492, 9.6942

Details

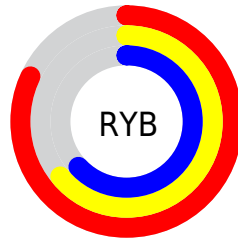
The Decimal color **13804449** is a light color, and the websafe version is hex **CC9999**. A complement of this color would be **10604754**, and the grayscale version is **11645361**.

A 20% lighter version of the original color is **16767704**, and **10186606** is the 20% darker color. If you saturate the color by 10%, you get **13799308**, and if you desaturate by 10%, it is **13809590**.

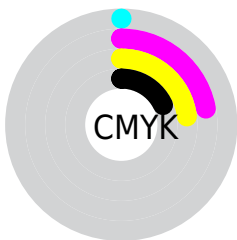
Distribution



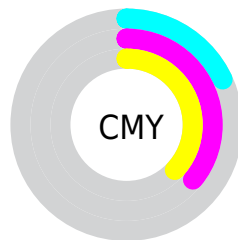
- Red (82%)
- Green (64%)
- Blue (63%)



- Red (82%)
- Yellow (64%)
- Blue (63%)



- Cyan (0%)
- Magenta (22%)
- Yellow (23%)
- Black (18%)



- Cyan (18%)
- Magenta (36%)
- Yellow (37%)

Brightness & Saturation Gradients

These gradients show how the Decimal color 13804449 changes by changing the brightness by 10 percent. The first figure shows a shift by +10% for each color and the second figure -10%.

Similar to the brightness gradients but the following saturation gradients show a change of the Decimal color 13804449 by changing the saturation by 10% instead.

 13804449

 13804449

16777215

 11962759

 16767704

 10186606


 16775156

 8410965

 6700862

 5056808

 3478292

 2162688

 0

 13804449

 13804449

 13799308

 13809590

 13794167

 13814731

 13789026

 13819872

 13783629

 13825269

 13778488

 13828095

 13773347

 13768206

 13764864

Harmonies

Analogous

The Analogous color harmony consists of three colors that are next to each other on the color wheel.



13542322



13804449



13412243

Triad

The Triadic color harmony groups three colors that are evenly spaced from another and form a triangle on the color wheel.



13804449



10073754



9941456

Complementary

The Complementary color scheme is a pair of colors which are on the opposite of each other on the color wheel.



13804449



10604754

Split Complementary

Split-complementary colors differ from the complementary color scheme. The scheme consists of three colors, the original color and two neighbors of the complement color.



8828361



13804449



9025706

Square

The Square scheme is like the rectangle color scheme, but the four colors are evenly spaced on the color wheel.



13804449



11383439



8435900



11381709

Rectangle

The Rectangle color scheme consists of four colors that form a rectangle on the color wheel.



13804449



12888718



8435900



9483215

Sweetspot

The Sweet Spot groups the original color and five complimentary colors.



13804449



16772845



13803984



8418933



0



8421504

Same Dimension

The Same Dimension uses a secret algorithm to generate beautiful new colors.



13804449



16759736



13810593



6905694



11011840



2687488

Inverse Universe

The Inverse Universe completely reimagines the original color for something new.



10604754



12123391



10598610



6187113



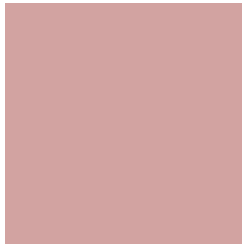
41384



10025

Previews

White Background



This preview shows how the Decimal color 13804449 looks on a white background.

Color Contrast Check

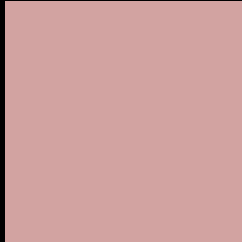
Large Text (above 18pt) WCAG AA × Fail

Any Text WCAG AA × Fail

Large Text (above 18pt) WCAG AAA × Fail

Any Text WCAG AAA × Fail

Black Background



This preview shows how the Decimal color 13804449 looks on a black background.

Color Contrast Check

Large Text (above 18pt) WCAG AA ✓ Pass

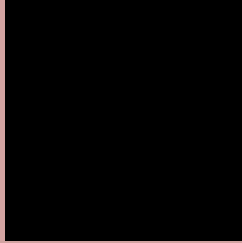
Any Text WCAG AA ✓ Pass

Large Text (above 18pt) WCAG AAA ✓ Pass

Any Text WCAG AAA ✓ Pass

If you want to check with other color combinations, try the [Color Contrast Checker](#).

Decimal 13804449 Background



This preview shows how black text looks on a background with the Decimal color 13804449.




This preview shows how white text looks on a background with the Decimal color 13804449.

Color Blindness Simulation

Color vision deficiency is a very complex topic, and I could not describe the different causes any better than Wikipedia does, so if you want to learn more, you should check out their [article about color blindness](#).

Dichromacy





Tritanopia
13869486

Trichromacy



Original Color
13804449

Protanomaly
12495525

Deuteranomaly
13280928

Tritanomaly
13869737

Monochromacy



Original Color
13804449

Achromatopsia
11645361

Achromatomaly
12430507

CSS Examples

Text

The CSS property to change the color of the text to Decimal 13804449 is called "color". The color property can be set on classes, ids or directly on the HTML element.

This example shows how text in the color #D2A3A1 looks like.

```
.text, #text, p{  
    color:#D2A3A1  
}
```

If you want to add a text shadow in that color use the text-shadow property, you can generate a text shadow directly with our [CSS Text Shadow Generator](#).

Here you see how black text with a 4 pixel #D2A3A1 colored shadow looks like.

```
.shadow{ text-shadow: 4px 4px 2px #D2A3A1
}
```

Border

The CSS property to change the border of an element to Decimal 13804449 is called "border". The border property can be set on classes, ids or directly on the HTML element.

This example shows the color as border, it can be applied via the CSS property "border" or "border-color".

```
.border, #border, table{ border:4px solid
#D2A3A1 }
```

If only the border color should be changed use the property `border-color`.

```
.border{ border-color:#D2A3A1 }
```

If you want to add a box shadow in that color use:

Here you see how a box with a 4 pixel #D2A3A1 colored shadow looks like.

```
.boxshadow{ -moz-box-shadow:4px 4px 4px  
4px #D2A3A1; -webkit-box-shadow:4px 4px  
4px 4px #D2A3A1; box-shadow:4px 4px 4px  
4px #D2A3A1 }
```

Background

The CSS property to change the background color of an element to Decimal 13804449 is called "background". The background property can be set on classes, ids or directly on the HTML element.

```
.background, #background, body{  
background:#D2A3A1 }
```

If only the background color should be changed can be used:

```
.background{ background-color:#D2A3A1 }
```

This example shows the color as background, it is applied via the CSS property "background".

To optimize and compress your CSS code, you can use our [online CSS compressor and optimizer](#) based on csstidy. If you want to create a linear or radial gradient as background or border, check our [CSS Gradient Generator](#).

Hey! You found this booklet interesting? Support Converting Colors with the new Membership Option!

The pro membership hides all ads, plus gives you double the colors in the color bucket, and more awesome pro features!

[Learn more, Memberships starting at \\$2.50/m!](#)

**Follow me
on Twitter!**

@ConvertingColor