

# Converting Colors

Decimal(13805197)

Have a look what the booklet for  
Decimal(13805197) contains.

<b>Decimal(13805197)</b> .....	3
<i><b>Conversions</b></i> .....	4
<i><b>Details</b></i> .....	6
<i><b>Harmonies</b></i> .....	11
<i><b>Previews</b></i> .....	23
<i><b>Color Blindness Simulation</b></i> .....	26
<i><b>CSS Examples</b></i> .....	29

# **Color**

**Decimal(13805197)**

# Conversions

## Conversions Part 1

Format	Color
Hex	D2A68D
RGB	210, 166, 141
RGB Percent	82%, 65%, 55%
CMY	0.1765, 0.3490, 0.4471
CMYK	0.00, 0.21, 0.33, 0.18
HSL	22°, 43%, 69%
HSV	22°, 33%, 82%
XYZ	45.0223, 42.8972, 31.1064
YIQ	176.3060, 34.2490, 1.5530

# Conversions

## Conversions Part 2

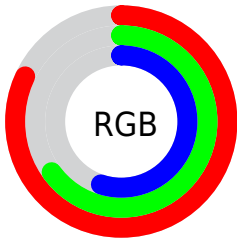
<b>Format</b>	<b>Color</b>
<b>R<sub>YB</sub></b>	210, 180, 141
Decimal	13805197
CIE <sub>Lab</sub>	71.49, 12.67, 19.11
CIE <sub>LCh</sub>	71, 22.933, 56.459
Yxy	42.8972, 0.3783, 0.3604
Android (android.graphics.Color)	4291995277 (0xFFD2A68D)
YUV	176.3060, -17.4059, 29.5496
Hunter-Lab	65.4959, 8.0841, 17.6882

# Details

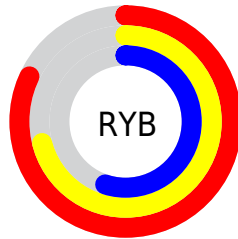
The Decimal color **13805197** is a light color, and the websafe version is hex **CC9999**. A complement of this color would be **9288146**, and the grayscale version is **11579568**.

A 20% lighter version of the original color is **16768451**, and **10121819** is the 20% darker color. If you saturate the color by 10%, you get **13801848**, and if you desaturate by 10%, it is **13808546**.

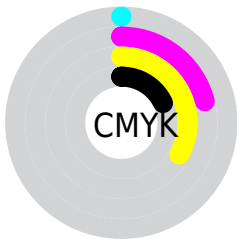
# Distribution



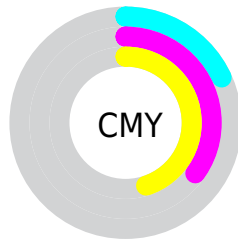
- Red (82%)
- Green (65%)
- Blue (55%)



- Red (82%)
- Yellow (71%)
- Blue (55%)



- Cyan (0%)
- Magenta (21%)
- Yellow (33%)
- Black (18%)



- Cyan (18%)
- Magenta (35%)
- Yellow (45%)

# Brightness & Saturation Gradients

These gradients show how the Decimal color 13805197 changes by changing the brightness by 10 percent. The first figure shows a shift by +10% for each color and the second figure -10%.

Similar to the brightness gradients but the following saturation gradients show a change of the Decimal color 13805197 by changing the saturation by 10% instead.



 13805197

 13805197

16777215

 11963507

 16768451

 10121819

 16775903

 8345923

 16777211

 6636077

 4992024

 3413760

 1900544

 0

 13805197

 13805197

 13801848

 13808546

 13798243

 13812151

 13794894

 13815500

 13791289

 13819105

 13787940

 13822454

 13784591

 13825791

 13782016

 13828095

# Harmonies

## Analogous

The Analogous color harmony consists of three colors that are next to each other on the color wheel.



14328221



13805197



12692870

# Triad

The Triadic color harmony groups three colors that are evenly spaced from another and form a triangle on the color wheel.



13805197



8305580



11512788

# Complementary

The Complementary color scheme is a pair of colors which are on the opposite of each other on the color wheel.



13805197



9288146

# Split Complementary

Split-complementary colors differ from the complementary color scheme. The scheme consists of three colors, the original color and two neighbors of the complement color.



9679576



13805197



7650241

# Square

The Square scheme is like the rectangle color scheme, but the four colors are evenly spaced on the color wheel.



13805197



9681047



8173521



13149382

# Rectangle

The Rectangle color scheme consists of four colors that form a rectangle on the color wheel.



13805197



11776391



8173521



10923479

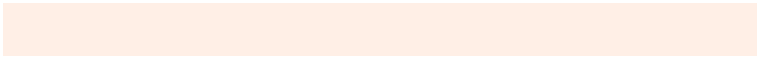


# Sweetspot

The Sweet Spot groups the original color and five complimentary colors.



13805197



16773094



13798842



8418928



0



8421504



# Same Dimension

The Same Dimension uses a secret algorithm to generate beautiful new colors.



13805197



16760988



13813901



6906462



11025664



2690816

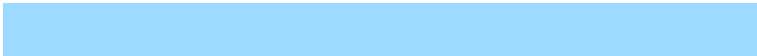


# Inverse Universe

The Inverse Universe completely reimagines the original color for something new.



9288146



10279935



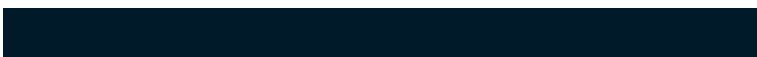
9279442



6186345



27560



6697



# Previews

## White Background



This preview shows how the Decimal color 13805197 looks on a white background.

## Color Contrast Check

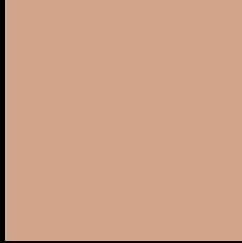
Large Text (above 18pt) WCAG AA × Fail

Any Text WCAG AA × Fail

Large Text (above 18pt) WCAG AAA × Fail

Any Text WCAG AAA × Fail

# Black Background



This preview shows how the Decimal color 13805197 looks on a black background.

## Color Contrast Check

Large Text (above 18pt) WCAG AA ✓ Pass

Any Text WCAG AA ✓ Pass

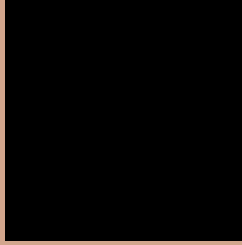
Large Text (above 18pt) WCAG AAA ✓ Pass

Any Text WCAG AAA ✓ Pass

If you want to check with other color combinations, try the [Color Contrast Checker](#).



## Decimal 13805197 Background



This preview shows how black text looks on a background with the Decimal color 13805197.



This preview shows how white text looks on a background with the Decimal color 13805197.

# Color Blindness Simulation

Color vision deficiency is a very complex topic, and I could not describe the different causes any better than Wikipedia does, so if you want to learn more, you should check out their [article about color blindness](#).

## Dichromacy





**Tritanopia**  
14000558

# Trichromacy



**Original Color**  
13805197

**Protanomaly**  
12758160

**Deuteranomaly**  
13543309

**Tritanomaly**  
13935522

# Monochromacy



**Original Color**  
13805197

**Achromatopsia**  
11579568

**Achromatomaly**  
12364963

# CSS Examples

## Text

The CSS property to change the color of the text to Decimal 13805197 is called "color". The color property can be set on classes, ids or directly on the HTML element.

This example shows how text in the color #D2A68D looks like.

```
.text, #text, p{  
    color:#D2A68D  
}
```

If you want to add a text shadow in that color use the text-shadow property, you can generate a text shadow directly with our [CSS Text Shadow Generator](#).

Here you see how black text with a 4 pixel #D2A68D colored shadow looks like.

```
.shadow{ text-shadow: 4px 4px 2px #D2A68D
}
```

## Border

The CSS property to change the border of an element to Decimal 13805197 is called "border". The border property can be set on classes, ids or directly on the HTML element.

This example shows the color as border, it can be applied via the CSS property "border" or "border-color".

```
.border, #border, table{ border:4px solid
#D2A68D }
```

If only the border color should be changed use the property `border-color`.

```
.border{ border-color:#D2A68D }
```

If you want to add a box shadow in that color use:

Here you see how a box with a 4 pixel #D2A68D colored shadow looks like.

```
.boxshadow{ -moz-box-shadow:4px 4px 4px  
4px #D2A68D; -webkit-box-shadow:4px 4px  
4px 4px #D2A68D; box-shadow:4px 4px 4px  
4px #D2A68D }
```

# Background

The CSS property to change the background color of an element to Decimal 13805197 is called "background". The background property can be set on classes, ids or directly on the HTML element.

```
.background, #background, body{  
background:#D2A68D }
```

If only the background color should be changed can be used:

```
.background{ background-color:#D2A68D }
```

This example shows the color as background, it is applied via the CSS property "background".

To optimize and compress your CSS code, you can use our [online CSS compressor and optimizer](#) based on csstidy. If you want to create a linear or radial gradient as background or border, check our [CSS Gradient Generator](#).



Hey! You found this booklet interesting? Support Converting Colors with the new Membership Option!

The pro membership hides all ads, plus gives you double the colors in the color bucket, and more awesome pro features!

**[Learn more, Memberships starting at \\$2.50/m!](#)**

**Follow me  
on Twitter!**

@ConvertingColor