

Converting Colors

Decimal(13805202)

Have a look what the booklet for
Decimal(13805202) contains.

Decimal(13805202)	3
<i>Conversions</i>	4
<i>Details</i>	6
<i>Harmonies</i>	11
<i>Previews</i>	23
<i>Color Blindness Simulation</i>	26
<i>CSS Examples</i>	29

Color

Decimal(13805202)

Conversions

Conversions Part 1

Format	Color
Hex	D2A692
RGB	210, 166, 146
RGB Percent	82%, 65%, 57%
CMY	0.1765, 0.3490, 0.4275
CMYK	0.00, 0.21, 0.30, 0.18
HSL	19°, 42%, 70%
HSV	19°, 30%, 82%
XYZ	45.4029, 43.0494, 33.1105
YIQ	176.8760, 32.6440, 3.1080

Conversions

Conversions Part 2

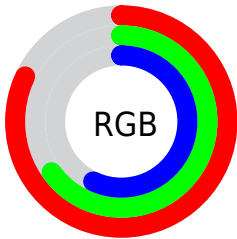
Format	Color
RYB	210, 175, 146
Decimal	13805202
CIELab	71.59, 13.32, 16.52
CIElCh	72, 21.223, 51.123
Yxy	43.0494, 0.3735, 0.3541
Android (android.graphics.Color)	4291995282 (0xFFD2A692)
YUV	176.8760, -15.2219, 29.0497
Hunter-Lab	65.6120, 8.6991, 16.0083

Details

The Decimal color **13805202** is a light color, and the websafe version is hex **CC9999**. A complement of this color would be **9617106**, and the grayscale version is **11645361**.

A 20% lighter version of the original color is **16768456**, and **10121823** is the 20% darker color. If you saturate the color by 10%, you get **13801597**, and if you desaturate by 10%, it is **13808807**.

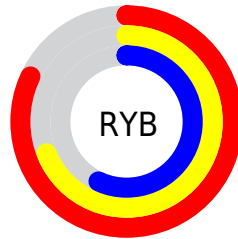
Distribution



Red (82%)

Green (65%)

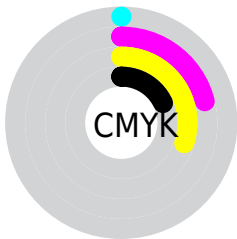
Blue (57%)



Red (82%)

Yellow (69%)

Blue (57%)

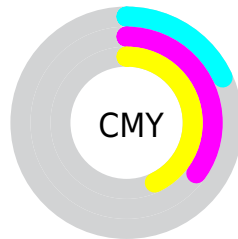


Cyan (0%)

Magenta (21%)

Yellow (30%)

Black (18%)



Cyan (18%)

Magenta (35%)

Yellow (43%)

Brightness & Saturation Gradients

These gradients show how the Decimal color 13805202 changes by changing the brightness by 10 percent. The first figure shows a shift by +10% for each color and the second figure -10%.

Similar to the brightness gradients but the following saturation gradients show a change of the Decimal color 13805202 by changing the saturation by 10% instead.

 13805202

 13805202

16777215

 11963512

 16768456

 10121823

 16775908

 8411464

 6701617

 4992028

 3479299

 1966080

 0

 13805202

 13805202

 13801597

 13808807

 13797736

 13812668

 13794131

 13816273

 13790270

 13820134

 13786665

 13823739

 13782804

 13827583

 13779456

 13828095

Harmonies

Analogous

The Analogous color harmony consists of three colors that are next to each other on the color wheel.



14197410



13805202



12889225

Triad

The Triadic color harmony groups three colors that are evenly spaced from another and form a triangle on the color wheel.



13805202



8829609



11250899

Complementary

The Complementary color scheme is a pair of colors which are on the opposite of each other on the color wheel.



13805202



9617106

Split Complementary

Split-complementary colors differ from the complementary color scheme. The scheme consists of three colors, the original color and two neighbors of the complement color.



9548757



13805202



8043197

Square

The Square scheme is like the rectangle color scheme, but the four colors are evenly spaced on the color wheel.



13805202



10074007



8304845



12822216

Rectangle

The Rectangle color scheme consists of four colors that form a rectangle on the color wheel.



13805202



12038281



8304845



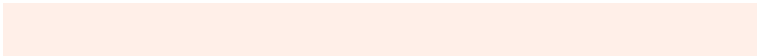
10661845

Sweetspot

The Sweet Spot groups the original color and five complimentary colors.



13805202



16773096



13800127



8418929



0



8421504

Same Dimension

The Same Dimension uses a secret algorithm to generate beautiful new colors.



13805202



16760481



13813138



6906206



11023616



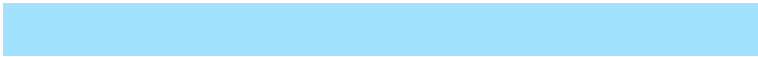
2690304

Inverse Universe

The Inverse Universe completely reimagines the original color for something new.



9617106



10609407



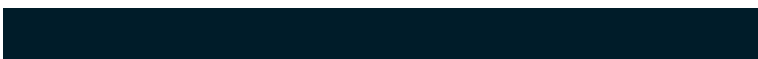
9609170



6186345



29864



7209

Previews

White Background



This preview shows how the Decimal color 13805202 looks on a white background.

Color Contrast Check

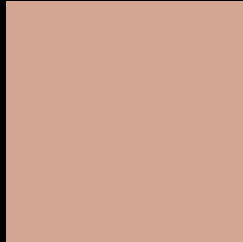
Large Text (above 18pt) WCAG AA × Fail

Any Text WCAG AA × Fail

Large Text (above 18pt) WCAG AAA × Fail

Any Text WCAG AAA × Fail

Black Background



This preview shows how the Decimal color 13805202 looks on a black background.

Color Contrast Check

Large Text (above 18pt) WCAG AA ✓ Pass

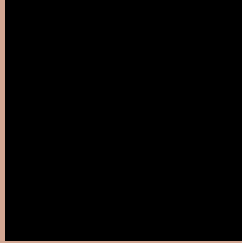
Any Text WCAG AA ✓ Pass

Large Text (above 18pt) WCAG AAA ✓ Pass

Any Text WCAG AAA ✓ Pass

If you want to check with other color combinations, try the [Color Contrast Checker](#).

Decimal 13805202 Background



This preview shows how black text looks on a background with the Decimal color 13805202.




This preview shows how white text looks on a background with the Decimal color 13805202.

Color Blindness Simulation

Color vision deficiency is a very complex topic, and I could not describe the different causes any better than Wikipedia does, so if you want to learn more, you should check out their [article about color blindness](#).

Dichromacy





Tritanopia
14000814

Trichromacy



Original Color
13805202

Protanomaly
12692629

Deuteranomaly
13543569

Tritanomaly
13935524

Monochromacy



Original Color
13805202

Achromatopsia
11645361

Achromatomaly
12430758

CSS Examples

Text

The CSS property to change the color of the text to Decimal 13805202 is called "color". The color property can be set on classes, ids or directly on the HTML element.

This example shows how text in the color #D2A692 looks like.

```
.text, #text, p{  
    color:#D2A692  
}
```

If you want to add a text shadow in that color use the text-shadow property, you can generate a text shadow directly with our [CSS Text Shadow Generator](#).

Here you see how black text with a 4 pixel #D2A692 colored shadow looks like.

```
.shadow{ text-shadow: 4px 4px 2px #D2A692
}
```

Border

The CSS property to change the border of an element to Decimal 13805202 is called "border". The border property can be set on classes, ids or directly on the HTML element.

This example shows the color as border, it can be applied via the CSS property "border" or "border-color".

```
.border, #border, table{ border:4px solid
#D2A692 }
```

If only the border color should be changed use the property `border-color`.

```
.border{ border-color:#D2A692 }
```

If you want to add a box shadow in that color use:

Here you see how a box with a 4 pixel #D2A692 colored shadow looks like.

```
.boxshadow{ -moz-box-shadow:4px 4px 4px  
4px #D2A692; -webkit-box-shadow:4px 4px  
4px 4px #D2A692; box-shadow:4px 4px 4px  
4px #D2A692 }
```

Background

The CSS property to change the background color of an element to Decimal 13805202 is called "background". The background property can be set on classes, ids or directly on the HTML element.

```
.background, #background, body{  
background:#D2A692 }
```

If only the background color should be changed can be used:

```
.background{ background-color:#D2A692 }
```

This example shows the color as background, it is applied via the CSS property "background".

To optimize and compress your CSS code, you can use our [online CSS compressor and optimizer](#) based on csstidy. If you want to create a linear or radial gradient as background or border, check our [CSS Gradient Generator](#).

Hey! You found this booklet interesting? Support Converting Colors with the new Membership Option!

The pro membership hides all ads, plus gives you double the colors in the color bucket, and more awesome pro features!

[Learn more, Memberships starting at \\$2.50/m!](#)

**Follow me
on Twitter!**

@ConvertingColor