

Converting Colors

Decimal(13805453)

Have a look what the booklet for
Decimal(13805453) contains.

Decimal(13805453)	3
<i>Conversions</i>	4
<i>Details</i>	6
<i>Harmonies</i>	11
<i>Previews</i>	23
<i>Color Blindness Simulation</i>	26
<i>CSS Examples</i>	29

Color

Decimal(13805453)

Conversions

Conversions Part 1

Format	Color
Hex	D2A78D
RGB	210, 167, 141
RGB Percent	82%, 65%, 55%
CMY	0.1765, 0.3451, 0.4471
CMYK	0.00, 0.20, 0.33, 0.18
HSL	23°, 43%, 69%
HSV	23°, 33%, 82%
XYZ	45.2048, 43.2622, 31.1672
YIQ	176.8930, 33.9740, 1.0300

Conversions

Conversions Part 2

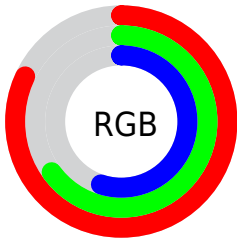
Format	Color
R _Y B	210, 183, 141
Decimal	13805453
CIE Lab	71.73, 12.13, 19.45
CIE LCh	72, 22.927, 58.055
Yxy	43.2622, 0.3779, 0.3616
Android (android.graphics.Color)	4291995533 (0xFFD2A78D)
YUV	176.8930, -17.6952, 29.0348
Hunter-Lab	65.7740, 7.5740, 17.9470

Details

The Decimal color **13805453** is a light color, and the websafe version is hex **CC9999**. A complement of this color would be **9287890**, and the grayscale version is **11645361**.

A 20% lighter version of the original color is **16768707**, and **10122075** is the 20% darker color. If you saturate the color by 10%, you get **13802104**, and if you desaturate by 10%, it is **13808802**.

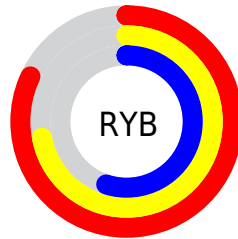
Distribution



Red (82%)

Green (65%)

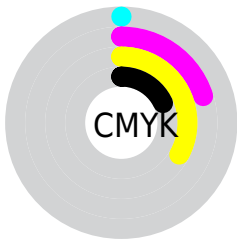
Blue (55%)



Red (82%)

Yellow (72%)

Blue (55%)

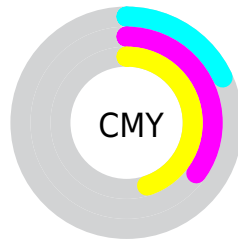


Cyan (0%)

Magenta (20%)

Yellow (33%)

Black (18%)



Cyan (18%)

Magenta (35%)

Yellow (45%)

Brightness & Saturation Gradients

These gradients show how the Decimal color 13805453 changes by changing the brightness by 10 percent. The first figure shows a shift by +10% for each color and the second figure -10%.

Similar to the brightness gradients but the following saturation gradients show a change of the Decimal color 13805453 by changing the saturation by 10% instead.

 13805453

 13805453

16777215

 11963763

 16768707

 10122075

 16776159

 8346179

 16777211

 6636333

 4992280

 3479296

 1900544

 0

 13805453

 13805453

 13802104

 13808802

 13798755

 13812151

 13795406

 13815500

 13792057

 13818849

 13788708

 13822198

 13785103

 13825791

 13782784

 13828095

Harmonies

Analogous

The Analogous color harmony consists of three colors that are next to each other on the color wheel.



14394013



13805453



12693126

Triad

The Triadic color harmony groups three colors that are evenly spaced from another and form a triangle on the color wheel.



13805453



8305838



11709397

Complementary

The Complementary color scheme is a pair of colors which are on the opposite of each other on the color wheel.



13805453



9287890

Split Complementary

Split-complementary colors differ from the complementary color scheme. The scheme consists of three colors, the original color and two neighbors of the complement color.



9810649



13805453



7650243

Square

The Square scheme is like the rectangle color scheme, but the four colors are evenly spaced on the color wheel.



13805453



9615769



8239315



13280454

Rectangle

The Rectangle color scheme consists of four colors that form a rectangle on the color wheel.



13805453



11711112



8239315



11054551

Sweetspot

The Sweet Spot groups the original color and five complimentary colors.



13805453



16773094



13798841



8418928



0



8421504

Same Dimension

The Same Dimension uses a secret algorithm to generate beautiful new colors.



13805453



16761244



13814157



6906462



11026176



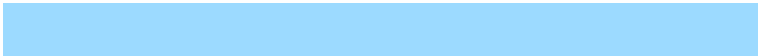
2690816

Inverse Universe

The Inverse Universe completely reimagines the original color for something new.



9287890



10279679



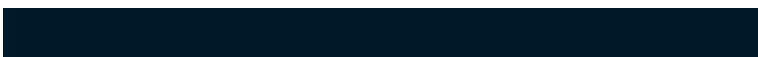
9279186



6186345



27048



6441

Previews

White Background



This preview shows how the Decimal color 13805453 looks on a white background.

Color Contrast Check

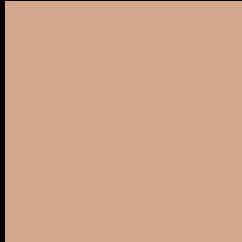
Large Text (above 18pt) WCAG AA × Fail

Any Text WCAG AA × Fail

Large Text (above 18pt) WCAG AAA × Fail

Any Text WCAG AAA × Fail

Black Background



This preview shows how the Decimal color 13805453 looks on a black background.

Color Contrast Check

Large Text (above 18pt) WCAG AA ✓ Pass

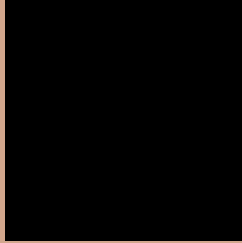
Any Text WCAG AA ✓ Pass

Large Text (above 18pt) WCAG AAA ✓ Pass

Any Text WCAG AAA ✓ Pass

If you want to check with other color combinations, try the [Color Contrast Checker](#).

Decimal 13805453 Background



This preview shows how black text looks on a background with the Decimal color 13805453.




This preview shows how white text looks on a background with the Decimal color 13805453.

Color Blindness Simulation

Color vision deficiency is a very complex topic, and I could not describe the different causes any better than Wikipedia does, so if you want to learn more, you should check out their [article about color blindness](#).

Dichromacy





Tritanopia
14066351

Trichromacy



Original Color
13805453

Protanomaly
12823952

Deuteranomaly
13609101

Tritanomaly
14001315

Monochromacy



Original Color
13805453

Achromatopsia
11645361

Achromatomaly
12430756

CSS Examples

Text

The CSS property to change the color of the text to Decimal 13805453 is called "color". The color property can be set on classes, ids or directly on the HTML element.

This example shows how text in the color #D2A78D looks like.

```
.text, #text, p{  
    color:#D2A78D  
}
```

If you want to add a text shadow in that color use the text-shadow property, you can generate a text shadow directly with our [CSS Text Shadow Generator](#).

Here you see how black text with a 4 pixel #D2A78D colored shadow looks like.

```
.shadow{ text-shadow: 4px 4px 2px #D2A78D
}
```

Border

The CSS property to change the border of an element to Decimal 13805453 is called "border". The border property can be set on classes, ids or directly on the HTML element.

This example shows the color as border, it can be applied via the CSS property "border" or "border-color".

```
.border, #border, table{ border:4px solid
#D2A78D }
```

If only the border color should be changed use the property `border-color`.

```
.border{ border-color:#D2A78D }
```

If you want to add a box shadow in that color use:

Here you see how a box with a 4 pixel #D2A78D colored shadow looks like.

```
.boxshadow{ -moz-box-shadow:4px 4px 4px  
4px #D2A78D; -webkit-box-shadow:4px 4px  
4px 4px #D2A78D; box-shadow:4px 4px 4px  
4px #D2A78D }
```

Background

The CSS property to change the background color of an element to Decimal 13805453 is called "background". The background property can be set on classes, ids or directly on the HTML element.

```
.background, #background, body{  
background:#D2A78D }
```

If only the background color should be changed can be used:

```
.background{ background-color:#D2A78D }
```

This example shows the color as background, it is applied via the CSS property "background".

To optimize and compress your CSS code, you can use our [online CSS compressor and optimizer](#) based on csstidy. If you want to create a linear or radial gradient as background or border, check our [CSS Gradient Generator](#).

Hey! You found this booklet interesting? Support Converting Colors with the new Membership Option!

The pro membership hides all ads, plus gives you double the colors in the color bucket, and more awesome pro features!

[Learn more, Memberships starting at \\$2.50/m!](#)

**Follow me
on Twitter!**

@ConvertingColor