

Converting Colors

Decimal(13805463)

Have a look what the booklet for
Decimal(13805463) contains.

Decimal(13805463)	3
<i>Conversions</i>	4
<i>Details</i>	6
<i>Harmonies</i>	11
<i>Previews</i>	23
<i>Color Blindness Simulation</i>	26
<i>CSS Examples</i>	29

Color

Decimal(13805463)

Conversions

Conversions Part 1

Format	Color
Hex	D2A797
RGB	210, 167, 151
RGB Percent	82%, 65%, 59%
CMY	0.1765, 0.3451, 0.4078
CMYK	0.00, 0.20, 0.28, 0.18
HSL	16°, 40%, 71%
HSV	16°, 28%, 82%
XYZ	45.9830, 43.5734, 35.2651
YIQ	178.0330, 30.7640, 4.1400

Conversions

Conversions Part 2

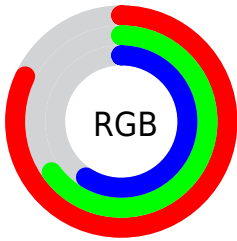
Format	Color
R_{YB}	210, 173, 151
Decimal	13805463
CIE _{Lab}	71.94, 13.45, 14.28
CIE _{LCh}	72, 19.616, 46.701
Yxy	43.5734, 0.3684, 0.3491
Android (android.graphics.Color)	4291995543 (0xFFD2A797)
YUV	178.0330, -13.3273, 28.0351
Hunter-Lab	66.0102, 8.8261, 14.5322

Details

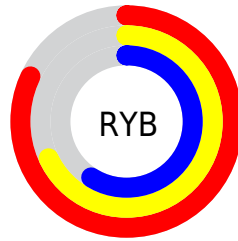
The Decimal color **13805463** is a light color, and the websafe version is hex **CC9999**. A complement of this color would be **9945810**, and the grayscale version is **11711154**.

A 20% lighter version of the original color is **16768717**, and **10122084** is the 20% darker color. If you saturate the color by 10%, you get **13801602**, and if you desaturate by 10%, it is **13809324**.

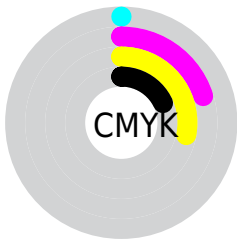
Distribution



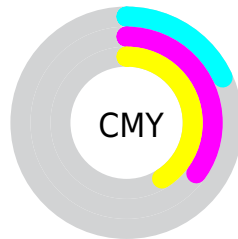
- Red (82%)
- Green (65%)
- Blue (59%)



- Red (82%)
- Yellow (68%)
- Blue (59%)



- Cyan (0%)
- Magenta (20%)
- Yellow (28%)
- Black (18%)



- Cyan (18%)
- Magenta (35%)
- Yellow (41%)

Brightness & Saturation Gradients

These gradients show how the Decimal color 13805463 changes by changing the brightness by 10 percent. The first figure shows a shift by +10% for each color and the second figure -10%.

Similar to the brightness gradients but the following saturation gradients show a change of the Decimal color 13805463 by changing the saturation by 10% instead.

 13805463

 13805463

16777215

 11963773

 16768717

 10122084

 16776169

 8411724

 6701877

 5057568

 3479305

 2031616

 0

 13805463

 13805463

 13801602

 13809324

 13797485

 13813441

 13793624

 13817302

 13789763

 13821163

 13785646

 13825279

 13781785

 13828095

 13777924

 13777152

Harmonies

Analogous

The Analogous color harmony consists of three colors that are next to each other on the color wheel.



14066855



13805463



13020302

Triad

The Triadic color harmony groups three colors that are evenly spaced from another and form a triangle on the color wheel.



13805463



9222823



11120338

Complementary

The Complementary color scheme is a pair of colors which are on the opposite of each other on the color wheel.



13805463



9945810

Split Complementary

Split-complementary colors differ from the complementary color scheme. The scheme consists of three colors, the original color and two neighbors of the complement color.



9614547



13805463



8502202

Square

The Square scheme is like the rectangle color scheme, but the four colors are evenly spaced on the color wheel.



13805463



10467223



8567242



12626377

Rectangle

The Rectangle color scheme consists of four colors that form a rectangle on the color wheel.



13805463



12234893



8567242



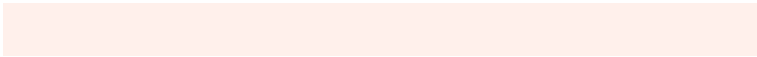
10596820

Sweetspot

The Sweet Spot groups the original color and five complimentary colors.



13805463



16773355



13801410



8418931



0



8421504

Same Dimension

The Same Dimension uses a secret algorithm to generate beautiful new colors.



13805463



16761000



13812887



6906206



11021824



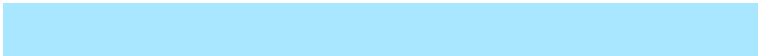
2689792

Inverse Universe

The Inverse Universe completely reimagines the original color for something new.



9945810



11069439



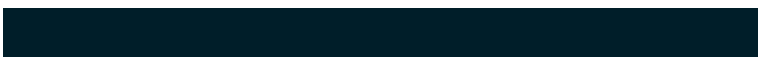
9938386



6186601



31656



7721

Previews

White Background



This preview shows how the Decimal color 13805463 looks on a white background.

Color Contrast Check

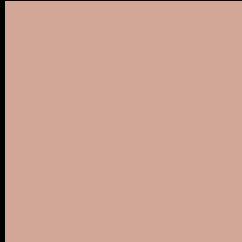
Large Text (above 18pt) WCAG AA × Fail

Any Text WCAG AA × Fail

Large Text (above 18pt) WCAG AAA × Fail

Any Text WCAG AAA × Fail

Black Background



This preview shows how the Decimal color 13805463 looks on a black background.

Color Contrast Check

Large Text (above 18pt) WCAG AA ✓ Pass

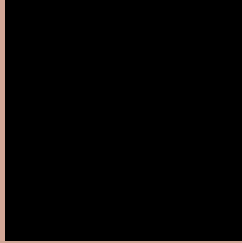
Any Text WCAG AA ✓ Pass

Large Text (above 18pt) WCAG AAA ✓ Pass

Any Text WCAG AAA ✓ Pass

If you want to check with other color combinations, try the [Color Contrast Checker](#).

Decimal 13805463 Background



This preview shows how black text looks on a background with the Decimal color 13805463.



This preview shows how white text looks on a background with the Decimal color 13805463.

Color Blindness Simulation

Color vision deficiency is a very complex topic, and I could not describe the different causes any better than Wikipedia does, so if you want to learn more, you should check out their [article about color blindness](#).

Dichromacy



Original Color
13805463

Protanopia
12169372

Deuteranopia
13347478



Tritanopia
14001072

Trichromacy



Original Color
13805463

Protanomaly
12758426

Deuteranomaly
13543830

Tritanomaly
13935783

Monochromacy



Original Color
13805463

Achromatopsia
11711154

Achromatomaly
12496552

CSS Examples

Text

The CSS property to change the color of the text to Decimal 13805463 is called "color". The color property can be set on classes, ids or directly on the HTML element.

This example shows how text in the color #D2A797 looks like.

```
.text, #text, p{  
  color:#D2A797  
}
```

If you want to add a text shadow in that color use the text-shadow property, you can generate a text shadow directly with our [CSS Text Shadow Generator](#).

Here you see how black text with a 4 pixel #D2A797 colored shadow looks like.

```
.shadow{ text-shadow: 4px 4px 2px #D2A797
}
```

Border

The CSS property to change the border of an element to Decimal 13805463 is called "border". The border property can be set on classes, ids or directly on the HTML element.

This example shows the color as border, it can be applied via the CSS property "border" or "border-color".

```
.border, #border, table{ border:4px solid
#D2A797 }
```

If only the border color should be changed use the property `border-color`.

```
.border{ border-color:#D2A797 }
```

If you want to add a box shadow in that color use:

Here you see how a box with a 4 pixel #D2A797 colored shadow looks like.

```
.boxshadow{ -moz-box-shadow:4px 4px 4px  
4px #D2A797; -webkit-box-shadow:4px 4px  
4px 4px #D2A797; box-shadow:4px 4px 4px  
4px #D2A797 }
```

Background

The CSS property to change the background color of an element to Decimal 13805463 is called "background". The background property can be set on classes, ids or directly on the HTML element.

```
.background, #background, body{  
background:#D2A797 }
```

If only the background color should be changed can be used:

```
.background{ background-color:#D2A797 }
```

This example shows the color as background, it is applied via the CSS property "background".

To optimize and compress your CSS code, you can use our [online CSS compressor and optimizer](#) based on csstidy. If you want to create a linear or radial gradient as background or border, check our [CSS Gradient Generator](#).

Hey! You found this booklet interesting? Support Converting Colors with the new Membership Option!

The pro membership hides all ads, plus gives you double the colors in the color bucket, and more awesome pro features!

[Learn more, Memberships starting at \\$2.50/m!](#)

**Follow me
on Twitter!**

@ConvertingColor