

# Converting Colors

Decimal(13805700)

Have a look what the booklet for  
Decimal(13805700) contains.

<b>Decimal(13805700)</b> .....	3
<i><b>Conversions</b></i> .....	4
<i><b>Details</b></i> .....	6
<i><b>Harmonies</b></i> .....	11
<i><b>Previews</b></i> .....	23
<i><b>Color Blindness Simulation</b></i> .....	26
<i><b>CSS Examples</b></i> .....	29

# **Color**

**Decimal(13805700)**

# Conversions

## Conversions Part 1

<b>Format</b>	<b>Color</b>
Hex	D2A884
RGB	210, 168, 132
RGB Percent	82%, 66%, 52%
CMY	0.1765, 0.3412, 0.4824
CMYK	0.00, 0.20, 0.37, 0.18
HSL	28°, 46%, 67%
HSV	28°, 37%, 82%
XYZ	44.7458, 43.3728, 27.8432
YIQ	176.4540, 36.5880, -2.2920

# Conversions

## Conversions Part 2

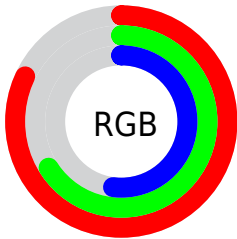
<b>Format</b>	<b>Color</b>
<b>R<sub>YB</sub></b>	210, 199, 132
Decimal	13805700
CIE Lab	71.81, 10.48, 24.45
CIE LCh	72, 26.599, 66.790
Yxy	43.3728, 0.3859, 0.3740
Android (android.graphics.Color)	4291995780 (0xFFD2A884)
YUV	176.4540, -21.9158, 29.4198
Hunter-Lab	65.8581, 6.0263, 21.0342

# Details

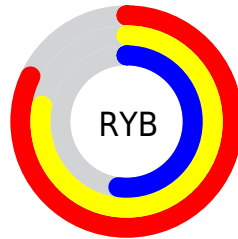
The Decimal color **13805700** is a light color, and the websafe version is hex **CC9966**. A complement of this color would be **8695506**, and the grayscale version is **11645361**.

A 20% lighter version of the original color is **16768953**, and **10122322** is the 20% darker color. If you saturate the color by 10%, you get **13802863**, and if you desaturate by 10%, it is **13808537**.

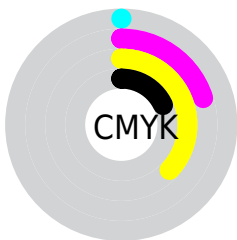
# Distribution



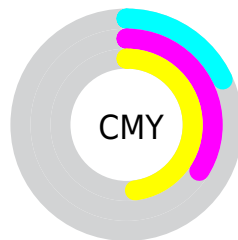
- Red (82%)
- Green (66%)
- Blue (52%)



- Red (82%)
- Yellow (78%)
- Blue (52%)



- Cyan (0%)
- Magenta (20%)
- Yellow (37%)
- Black (18%)



- Cyan (18%)
- Magenta (34%)
- Yellow (48%)

# Brightness & Saturation Gradients

These gradients show how the Decimal color 13805700 changes by changing the brightness by 10 percent. The first figure shows a shift by +10% for each color and the second figure -10%.

Similar to the brightness gradients but the following saturation gradients show a change of the Decimal color 13805700 by changing the saturation by 10% instead.



 13805700

 13805700

16777215

 11964011

 16768953

 10122322

 16776405

 8346427

 16777202

 6636580

 4926991

 3348736

 1835008

 0

 13805700

 13805700

13802863

13808537

13799770

13811630

13796933

13814467

13794096

13817304

13791003

13820397

13788166

13823231

13787392

13826047

13828095

# Harmonies

## Analogous

The Analogous color harmony consists of three colors that are next to each other on the color wheel.



14655892



13805700



12365952

# Triad

The Triadic color harmony groups three colors that are evenly spaced from another and form a triangle on the color wheel.



13805700



7323317



12298455

# Complementary

The Complementary color scheme is a pair of colors which are on the opposite of each other on the color wheel.



13805700



8695506

# Split Complementary

Split-complementary colors differ from the complementary color scheme. The scheme consists of three colors, the original color and two neighbors of the complement color.



10137824



13805700



6864076

# Square

The Square scheme is like the rectangle color scheme, but the four colors are evenly spaced on the color wheel.



13805700



8830108



7977180



13935044

# Rectangle

The Rectangle color scheme consists of four colors that form a rectangle on the color wheel.



13805700



11253124



7977180



11578331



# Sweetspot

The Sweet Spot groups the original color and five complimentary colors.



13805700



16773347



13796527



8419183



0



8421504



# Same Dimension

The Same Dimension uses a secret algorithm to generate beautiful new colors.



13805700



16761228



13815428



6906718



11030016



2691840

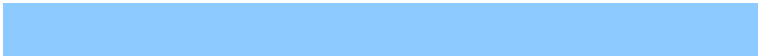


# Inverse Universe

The Inverse Universe completely reimagines the original color for something new.



8695506



9227007



8685778



6186089



23464



5673



# Previews

## White Background



This preview shows how the Decimal color 13805700 looks on a white background.

## Color Contrast Check

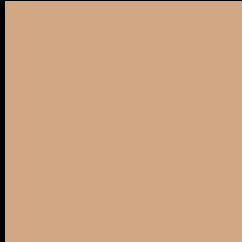
Large Text (above 18pt) WCAG AA × Fail

Any Text WCAG AA × Fail

Large Text (above 18pt) WCAG AAA × Fail

Any Text WCAG AAA × Fail

# Black Background



This preview shows how the Decimal color 13805700 looks on a black background.

## Color Contrast Check

Large Text (above 18pt) WCAG AA ✓ Pass

Any Text WCAG AA ✓ Pass

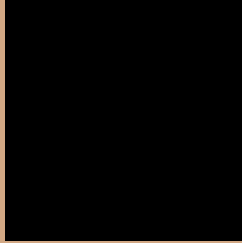
Large Text (above 18pt) WCAG AAA ✓ Pass

Any Text WCAG AAA ✓ Pass

If you want to check with other color combinations, try the [Color Contrast Checker](#).



## Decimal 13805700 Background



This preview shows how black text looks on a background with the Decimal color 13805700.




This preview shows how white text looks on a background with the Decimal color 13805700.

# Color Blindness Simulation

Color vision deficiency is a very complex topic, and I could not describe the different causes any better than Wikipedia does, so if you want to learn more, you should check out their [article about color blindness](#).

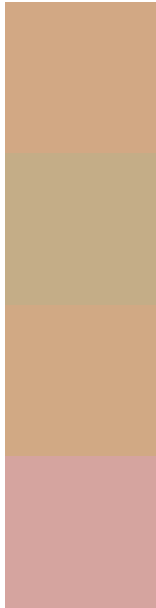
## Dichromacy





**Tritanopia**  
14066351

# Trichromacy



**Original Color**  
13805700

**Protanomaly**  
12889479

**Deuteranomaly**  
13740420

**Tritanomaly**  
14001311

# Monochromacy



**Original Color**  
13805700

**Achromatopsia**  
11579568

**Achromatomaly**  
12365216

# CSS Examples

## Text

The CSS property to change the color of the text to Decimal 13805700 is called "color". The color property can be set on classes, ids or directly on the HTML element.

This example shows how text in the color #D2A884 looks like.

```
.text, #text, p{  
    color:#D2A884  
}
```

If you want to add a text shadow in that color use the text-shadow property, you can generate a text shadow directly with our [CSS Text Shadow Generator](#).

Here you see how black text with a 4 pixel #D2A884 colored shadow looks like.

```
.shadow{ text-shadow: 4px 4px 2px #D2A884
}
```

## Border

The CSS property to change the border of an element to Decimal 13805700 is called "border". The border property can be set on classes, ids or directly on the HTML element.

This example shows the color as border, it can be applied via the CSS property "border" or "border-color".

```
.border, #border, table{ border:4px solid
#D2A884 }
```

If only the border color should be changed use the property border-color.

```
.border{ border-color:#D2A884 }
```

If you want to add a box shadow in that color use:

Here you see how a box with a 4 pixel #D2A884 colored shadow looks like.

```
.boxshadow{ -moz-box-shadow:4px 4px 4px  
4px #D2A884; -webkit-box-shadow:4px 4px  
4px 4px #D2A884; box-shadow:4px 4px 4px  
4px #D2A884 }
```

# Background

The CSS property to change the background color of an element to Decimal 13805700 is called "background". The background property can be set on classes, ids or directly on the HTML element.

```
.background, #background, body{  
background:#D2A884 }
```

If only the background color should be changed can be used:

```
.background{ background-color:#D2A884 }
```

This example shows the color as background, it is applied via the CSS property "background".

To optimize and compress your CSS code, you can use our [online CSS compressor and optimizer](#) based on csstidy. If you want to create a linear or radial gradient as background or border, check our [CSS Gradient Generator](#).



Hey! You found this booklet interesting? Support Converting Colors with the new Membership Option!

The pro membership hides all ads, plus gives you double the colors in the color bucket, and more awesome pro features!

**[Learn more, Memberships starting at \\$2.50/m!](#)**

**Follow me  
on Twitter!**

@ConvertingColor