

Converting Colors

Decimal(13805726)

Have a look what the booklet for
Decimal(13805726) contains.

Decimal(13805726)	3
<i>Conversions</i>	4
<i>Details</i>	6
<i>Harmonies</i>	11
<i>Previews</i>	23
<i>Color Blindness Simulation</i>	26
<i>CSS Examples</i>	29

Color

Decimal(13805726)

Conversions

Conversions Part 1

Format	Color
Hex	D2A89E
RGB	210, 168, 158
RGB Percent	82%, 66%, 62%
CMY	0.1765, 0.3412, 0.3804
CMYK	0.00, 0.20, 0.25, 0.18
HSL	12°, 37%, 72%
HSV	12°, 25%, 82%
XYZ	46.7525, 44.1755, 38.4104
YIQ	179.4180, 28.2420, 5.7940

Conversions

Conversions Part 2

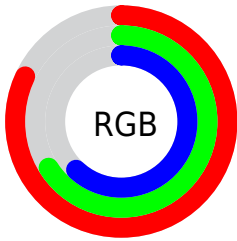
Format	Color
R _Y B	210, 170, 158
Decimal	13805726
CIE Lab	72.35, 13.89, 11.00
CIE LCh	72, 17.722, 38.382
Yxy	44.1755, 0.3615, 0.3415
Android (android.graphics.Color)	4291995806 (0xFFD2A89E)
YUV	179.4180, -10.5591, 26.8204
Hunter-Lab	66.4647, 9.2472, 12.2612

Details

The Decimal color **13805726** is a light color, and the websafe version is hex **CC9999**. A complement of this color would be **10406098**, and the grayscale version is **11842740**.

A 20% lighter version of the original color is **16768981**, and **10187883** is the 20% darker color. If you saturate the color by 10%, you get **13801353**, and if you desaturate by 10%, it is **13810099**.

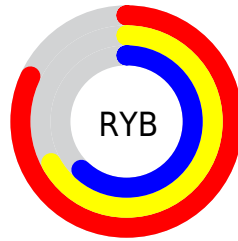
Distribution



Red (82%)

Green (66%)

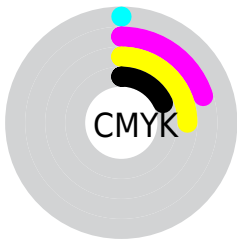
Blue (62%)



Red (82%)

Yellow (67%)

Blue (62%)

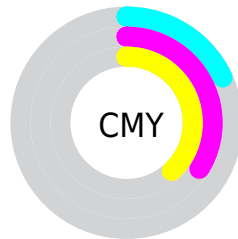


Cyan (0%)

Magenta (20%)

Yellow (25%)

Black (18%)



Cyan (18%)

Magenta (34%)

Yellow (38%)

Brightness & Saturation Gradients

These gradients show how the Decimal color 13805726 changes by changing the brightness by 10 percent. The first figure shows a shift by +10% for each color and the second figure -10%.

Similar to the brightness gradients but the following saturation gradients show a change of the Decimal color 13805726 by changing the saturation by 10% instead.

 13805726

 13805726

16777215

 11964036

 16768981

 10187883


 16776433

 8411986

 6702139

 5057830

 3479569

 2162688

 0

 13805726

 13805726

 13801353

 13810099

 13796980

 13814472

 13792607

 13818845

 13788234

 13823218

 13783861

 13827583

 13779488

 13828095

 13775115

 13772800

Harmonies

Analogous

The Analogous color harmony consists of three colors that are next to each other on the color wheel.



13870765



13805726



13216916

Triad

The Triadic color harmony groups three colors that are evenly spaced from another and form a triangle on the color wheel.



13805726



9812645



10858961

Complementary

The Complementary color scheme is a pair of colors which are on the opposite of each other on the color wheel.



13805726



10406098

Split Complementary

Split-complementary colors differ from the complementary color scheme. The scheme consists of three colors, the original color and two neighbors of the complement color.



9615055



13805726



9026485

Square

The Square scheme is like the rectangle color scheme, but the four colors are evenly spaced on the color wheel.



13805726



10991512



8895173



12233931

Rectangle

The Rectangle color scheme consists of four colors that form a rectangle on the color wheel.



13805726



12562577



8895173



10400721

Sweetspot

The Sweet Spot groups the original color and five complimentary colors.



13805726



16773613



13803208



8419189



0



8421504

Same Dimension

The Same Dimension uses a secret algorithm to generate beautiful new colors.



13805726



16761267



13812382



6905950



11018240



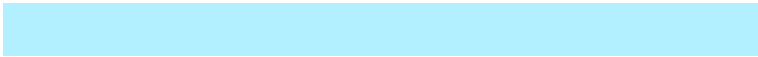
2689024

Inverse Universe

The Inverse Universe completely reimagines the original color for something new.



10406098



11792639



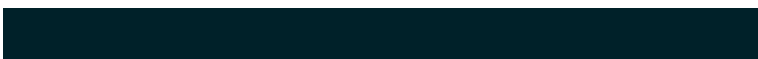
10399442



6186857



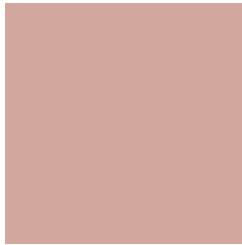
34984



8489

Previews

White Background



This preview shows how the Decimal color 13805726 looks on a white background.

Color Contrast Check

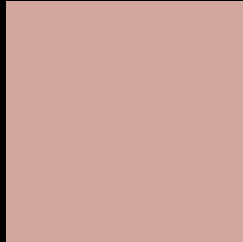
Large Text (above 18pt) WCAG AA × Fail

Any Text WCAG AA × Fail

Large Text (above 18pt) WCAG AAA × Fail

Any Text WCAG AAA × Fail

Black Background



This preview shows how the Decimal color 13805726 looks on a black background.

Color Contrast Check

Large Text (above 18pt) WCAG AA ✓ Pass

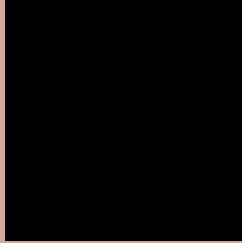
Any Text WCAG AA ✓ Pass

Large Text (above 18pt) WCAG AAA ✓ Pass

Any Text WCAG AAA ✓ Pass

If you want to check with other color combinations, try the [Color Contrast Checker](#).

Decimal 13805726 Background



This preview shows how black text looks on a background with the Decimal color 13805726.



This preview shows how white text looks on a background with the Decimal color 13805726.

Color Blindness Simulation

Color vision deficiency is a very complex topic, and I could not describe the different causes any better than Wikipedia does, so if you want to learn more, you should check out their [article about color blindness](#).

Dichromacy





Tritanopia
13936050

Trichromacy



Original Color
13805726

Protanomaly
12693153

Deuteranomaly
13478557

Tritanomaly
13870763

Monochromacy



Original Color
13805726

Achromatopsia
11776947

Achromatomaly
12496811

CSS Examples

Text

The CSS property to change the color of the text to Decimal 13805726 is called "color". The color property can be set on classes, ids or directly on the HTML element.

This example shows how text in the color #D2A89E looks like.

```
.text, #text, p{  
  color:#D2A89E  
}
```

If you want to add a text shadow in that color use the text-shadow property, you can generate a text shadow directly with our [CSS Text Shadow Generator](#).

Here you see how black text with a 4 pixel #D2A89E colored shadow looks like.

```
.shadow{ text-shadow: 4px 4px 2px #D2A89E
}
```

Border

The CSS property to change the border of an element to Decimal 13805726 is called "border". The border property can be set on classes, ids or directly on the HTML element.

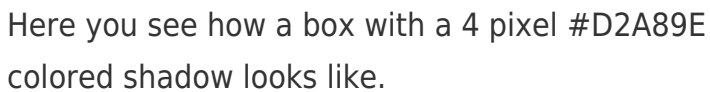
This example shows the color as border, it can be applied via the CSS property "border" or "border-color".

```
.border, #border, table{ border:4px solid
#D2A89E }
```

If only the border color should be changed use the property `border-color`.

```
.border{ border-color:#D2A89E }
```

If you want to add a box shadow in that color use:



Here you see how a box with a 4 pixel #D2A89E colored shadow looks like.

```
.boxshadow{ -moz-box-shadow:4px 4px 4px  
4px #D2A89E; -webkit-box-shadow:4px 4px  
4px 4px #D2A89E; box-shadow:4px 4px 4px  
4px #D2A89E }
```

Background

The CSS property to change the background color of an element to Decimal 13805726 is called "background". The background property can be set on classes, ids or directly on the HTML element.

```
.background, #background, body{  
background:#D2A89E }
```

If only the background color should be changed can be used:

```
.background{ background-color:#D2A89E }
```

This example shows the color as background, it is applied via the CSS property "background".

To optimize and compress your CSS code, you can use our [online CSS compressor and optimizer](#) based on csstidy. If you want to create a linear or radial gradient as background or border, check our [CSS Gradient Generator](#).

Hey! You found this booklet interesting? Support Converting Colors with the new Membership Option!

The pro membership hides all ads, plus gives you double the colors in the color bucket, and more awesome pro features!

[Learn more, Memberships starting at \\$2.50/m!](#)

**Follow me
on Twitter!**

@ConvertingColor