

Converting Colors

Decimal(13806254)

Have a look what the booklet for
Decimal(13806254) contains.

Decimal(13806254)	3
<i>Conversions</i>	4
<i>Details</i>	6
<i>Harmonies</i>	11
<i>Previews</i>	23
<i>Color Blindness Simulation</i>	26
<i>CSS Examples</i>	29

Color

Decimal(13806254)

Conversions

Conversions Part 1

Format	Color
Hex	D2AAAE
RGB	210, 170, 174
RGB Percent	82%, 67%, 68%
CMY	0.1765, 0.3333, 0.3176
CMYK	0.00, 0.19, 0.17, 0.18
HSL	354°, 31%, 75%
HSV	354°, 19%, 82%
XYZ	48.5930, 45.5071, 46.2670
YIQ	182.4160, 22.5560, 9.7240

Conversions

Conversions Part 2

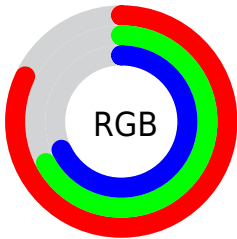
Format	Color
R _Y B	210, 170, 174
Decimal	13806254
CIE Lab	73.22, 15.22, 3.47
CIE LCh	73, 15.609, 12.863
Yxy	45.5071, 0.3462, 0.3242
Android (android.graphics.Color)	4291996334 (0xFFD2AAAE)
YUV	182.4160, -4.1491, 24.1912
Hunter-Lab	67.4589, 10.5267, 6.5569

Details

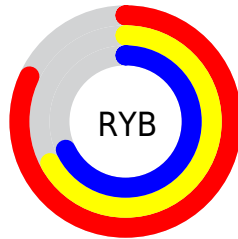
The Decimal color **13806254** is a light color, and the websafe version is hex **CC9999**. A complement of this color would be **11195086**, and the grayscale version is **11974326**.

A 20% lighter version of the original color is **16769509**, and **10188410** is the 20% darker color. If you saturate the color by 10%, you get **13800859**, and if you desaturate by 10%, it is **13811649**.

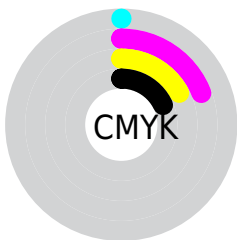
Distribution



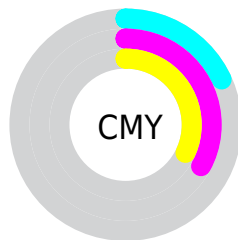
- Red (82%)
- Green (67%)
- Blue (68%)



- Red (82%)
- Yellow (67%)
- Blue (68%)



- Cyan (0%)
- Magenta (19%)
- Yellow (17%)
- Black (18%)



- Cyan (18%)
- Magenta (33%)
- Yellow (32%)

Brightness & Saturation Gradients

These gradients show how the Decimal color 13806254 changes by changing the brightness by 10 percent. The first figure shows a shift by +10% for each color and the second figure -10%.

Similar to the brightness gradients but the following saturation gradients show a change of the Decimal color 13806254 by changing the saturation by 10% instead.

 13806254

 13806254

16777215

 11964307

 16769509

 10188410

16776959

 8478049

 6767945

 5123891

 3610910

 2293764

 0

 13806254

 13806254

 13800859

 13811649

 13795464

 13817044

 13790069

 13822439

 13784674

 13827834

 13779280

 13828095

 13773885

 13768490

 13763095

 13762581

Harmonies

Analogous

The Analogous color harmony consists of three colors that are next to each other on the color wheel.



13413309



13806254



13675681

Triad

The Triadic color harmony groups three colors that are evenly spaced from another and form a triangle on the color wheel.



13806254



11057567



10205391

Complementary

The Complementary color scheme is a pair of colors which are on the opposite of each other on the color wheel.



13806254



11195086

Split Complementary

Split-complementary colors differ from the complementary color scheme. The scheme consists of three colors, the original color and two neighbors of the complement color.



9485255



13806254



10075307

Square

The Square scheme is like the rectangle color scheme, but the four colors are evenly spaced on the color wheel.



13806254



12170648



9485498



11318223

Rectangle

The Rectangle color scheme consists of four colors that form a rectangle on the color wheel.



13806254



13348763



9485498



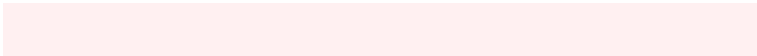
9877965

Sweetspot

The Sweet Spot groups the original color and five complimentary colors.



13806254



16773361



13544146



8419191



0



8421504

Same Dimension

The Same Dimension uses a secret algorithm to generate beautiful new colors.



13806254



16762058



13810346



6905439



11010065



2686980

Inverse Universe

The Inverse Universe completely reimagines the original color for something new.



13806254



16762058



11190994



6905439



11010065



2686980

Previews

White Background



This preview shows how the Decimal color 13806254 looks on a white background.

Color Contrast Check

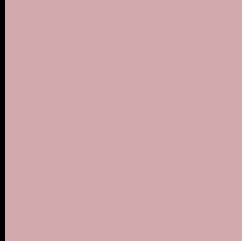
Large Text (above 18pt) WCAG AA × Fail

Any Text WCAG AA × Fail

Large Text (above 18pt) WCAG AAA × Fail

Any Text WCAG AAA × Fail

Black Background



This preview shows how the Decimal color 13806254 looks on a black background.

Color Contrast Check

Large Text (above 18pt) WCAG AA ✓ Pass

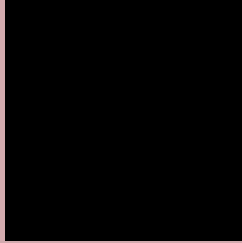
Any Text WCAG AA ✓ Pass

Large Text (above 18pt) WCAG AAA ✓ Pass

Any Text WCAG AAA ✓ Pass

If you want to check with other color combinations, try the [Color Contrast Checker](#).

Decimal 13806254 Background



This preview shows how black text looks on a background with the Decimal color 13806254.



This preview shows how white text looks on a background with the Decimal color 13806254.

Color Blindness Simulation

Color vision deficiency is a very complex topic, and I could not describe the different causes any better than Wikipedia does, so if you want to learn more, you should check out their [article about color blindness](#).


Dichromacy



Original Color
13806254

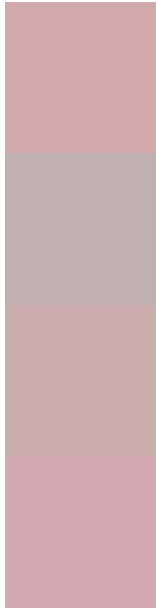
Protanopia
12039091

Deuteranopia
13151917



Tritanopia
13871542

Trichromacy



Original Color
13806254

Protanomaly
12693681

Deuteranomaly
13413805

Tritanomaly
13871539

Monochromacy



Original Color
13806254

Achromatopsia
11974326

Achromatomaly
12628659

CSS Examples

Text

The CSS property to change the color of the text to Decimal 13806254 is called "color". The color property can be set on classes, ids or directly on the HTML element.

This example shows how text in the color #D2AAAE looks like.

```
.text, #text, p{  
    color:#D2AAAE  
}
```

If you want to add a text shadow in that color use the text-shadow property, you can generate a text shadow directly with our [CSS Text Shadow Generator](#).

Here you see how black text with a 4 pixel #D2AAAE colored shadow looks like.

```
.shadow{ text-shadow: 4px 4px 2px #D2AAAE
}
```

Border

The CSS property to change the border of an element to Decimal 13806254 is called "border". The border property can be set on classes, ids or directly on the HTML element.

This example shows the color as border, it can be applied via the CSS property "border" or "border-color".

```
.border, #border, table{ border:4px solid
#D2AAAE }
```

If only the border color should be changed use the property `border-color`.

```
.border{ border-color:#D2AAAE }
```

If you want to add a box shadow in that color use:

Here you see how a box with a 4 pixel #D2AAAE colored shadow looks like.

```
.boxshadow{ -moz-box-shadow:4px 4px 4px  
4px #D2AAAE; -webkit-box-shadow:4px 4px  
4px 4px #D2AAAE; box-shadow:4px 4px 4px  
4px #D2AAAE }
```

Background

The CSS property to change the background color of an element to Decimal 13806254 is called "background". The background property can be set on classes, ids or directly on the HTML element.

```
.background, #background, body{  
background:#D2AAAE }
```

If only the background color should be changed can be used:

```
.background{ background-color:#D2AAAE }
```

This example shows the color as background, it is applied via the CSS property "background".

To optimize and compress your CSS code, you can use our [online CSS compressor and optimizer](#) based on csstidy. If you want to create a linear or radial gradient as background or border, check our [CSS Gradient Generator](#).

Hey! You found this booklet interesting? Support Converting Colors with the new Membership Option!

The pro membership hides all ads, plus gives you double the colors in the color bucket, and more awesome pro features!

[Learn more, Memberships starting at \\$2.50/m!](#)

**Follow me
on Twitter!**

@ConvertingColor