

Converting Colors

Decimal(13808286)

Have a look what the booklet for
Decimal(13808286) contains.

Decimal(13808286)	3
<i>Conversions</i>	4
<i>Details</i>	6
<i>Harmonies</i>	11
<i>Previews</i>	23
<i>Color Blindness Simulation</i>	26
<i>CSS Examples</i>	29

Color

Decimal(13808286)

Conversions

Conversions Part 1

Format	Color
Hex	D2B29E
RGB	210, 178, 158
RGB Percent	82%, 70%, 62%
CMY	0.1765, 0.3020, 0.3804
CMYK	0.00, 0.15, 0.25, 0.18
HSL	23°, 37%, 72%
HSV	23°, 25%, 82%
XYZ	48.6703, 48.0110, 39.0496
YIQ	185.2880, 25.4920, 0.5640

Conversions

Conversions Part 2

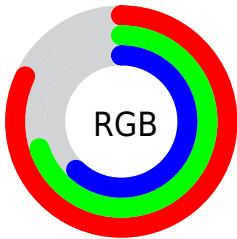
Format	Color
RYB	210, 191, 158
Decimal	13808286
CIELab	74.83, 8.50, 14.51
CIELCh	75, 16.817, 59.638
Yxy	48.0110, 0.3586, 0.3537
Android (android.graphics.Color)	4291998366 (0xFFD2B29E)
YUV	185.2880, -13.4530, 21.6724
Hunter-Lab	69.2900, 4.1234, 15.0891

Details

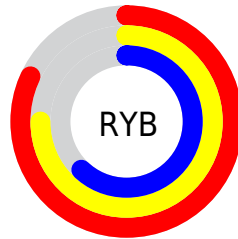
The Decimal color **13808286** is a light color, and the websafe version is hex **CC9999**. A complement of this color would be **10403538**, and the grayscale version is **12171705**.

A 20% lighter version of the original color is **16771797**, and **10190187** is the 20% darker color. If you saturate the color by 10%, you get **13804937**, and if you desaturate by 10%, it is **13811635**.

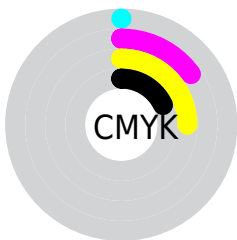
Distribution



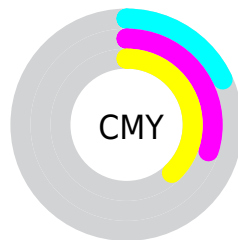
- Red (82%)
- Green (70%)
- Blue (62%)



- Red (82%)
- Yellow (75%)
- Blue (62%)



- Cyan (0%)
- Magenta (15%)
- Yellow (25%)
- Black (18%)



- Cyan (18%)
- Magenta (30%)
- Yellow (38%)

Brightness & Saturation Gradients

These gradients show how the Decimal color 13808286 changes by changing the brightness by 10 percent. The first figure shows a shift by +10% for each color and the second figure -10%.

Similar to the brightness gradients but the following saturation gradients show a change of the Decimal color 13808286 by changing the saturation by 10% instead.

 13808286

 13808286

16777215

 11966340

 16771797

 10190187

 16777201

 8414290

 6769723

 5125669

 3547153

 2165248

 0

 13808286

 13808286

 13804937

 13811635

 13801588

 13814984

 13798239

 13818333

 13794890

 13821682

 13791541

 13825023

 13788192

 13828095

 13785099

 13783296

Harmonies

Analogous

The Analogous color harmony consists of three colors that are next to each other on the color wheel.



14266026



13808286



12957593

Triad

The Triadic color harmony groups three colors that are evenly spaced from another and form a triangle on the color wheel.



13808286



9748919



12301523

Complementary

The Complementary color scheme is a pair of colors which are on the opposite of each other on the color wheel.



13808286



10403538

Split Complementary

Split-complementary colors differ from the complementary color scheme. The scheme consists of three colors, the original color and two neighbors of the complement color.



10992343



13808286



9486791

Square

The Square scheme is like the rectangle color scheme, but the four colors are evenly spaced on the color wheel.



13808286



10666152



9879250



13414600

Rectangle

The Rectangle color scheme consists of four colors that form a rectangle on the color wheel.



13808286



12237467



9879250



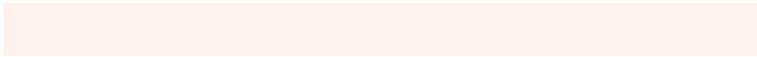
11843285

Sweetspot

The Sweet Spot groups the original color and five complimentary colors.



13808286



16774381



13803198



8419701



0



8421504

Same Dimension

The Same Dimension uses a secret algorithm to generate beautiful new colors.



13808286



16765107



13814942



6906462



11026688



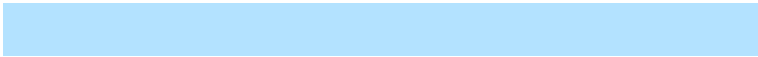
2691072

Inverse Universe

The Inverse Universe completely reimagines the original color for something new.



10403538



11789055



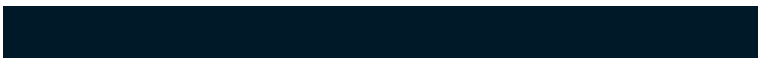
10396882



6186345



26792



6441

Previews

White Background



This preview shows how the Decimal color 13808286 looks on a white background.

Color Contrast Check

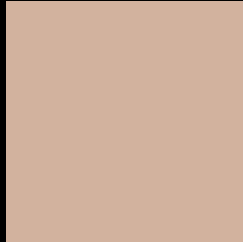
Large Text (above 18pt) WCAG AA × Fail

Any Text WCAG AA × Fail

Large Text (above 18pt) WCAG AAA × Fail

Any Text WCAG AAA × Fail

Black Background



This preview shows how the Decimal color 13808286 looks on a black background.

Color Contrast Check

Large Text (above 18pt) WCAG AA ✓ Pass

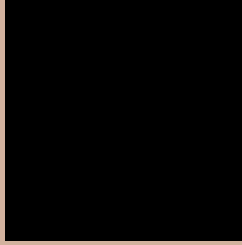
Any Text WCAG AA ✓ Pass

Large Text (above 18pt) WCAG AAA ✓ Pass

Any Text WCAG AAA ✓ Pass

If you want to check with other color combinations, try the [Color Contrast Checker](#).

Decimal 13808286 Background



This preview shows how black text looks on a background with the Decimal color 13808286.



This preview shows how white text looks on a background with the Decimal color 13808286.

Color Blindness Simulation

Color vision deficiency is a very complex topic, and I could not describe the different causes any better than Wikipedia does, so if you want to learn more, you should check out their [article about color blindness](#).


Dichromacy



Original Color
13808286

Protanopia
12695713

Deuteranopia
13873566



Tritanopia
14003899

Trichromacy



Original Color
13808286

Protanomaly
13088416

Deuteranomaly
13873566

Tritanomaly
13938608

Monochromacy



Original Color
13808286

Achromatopsia
12171705

Achromatomaly
12760751

CSS Examples

Text

The CSS property to change the color of the text to Decimal 13808286 is called "color". The color property can be set on classes, ids or directly on the HTML element.

This example shows how text in the color #D2B29E looks like.

```
.text, #text, p{  
    color:#D2B29E  
}
```

If you want to add a text shadow in that color use the text-shadow property, you can generate a text shadow directly with our [CSS Text Shadow Generator](#).

Here you see how black text with a 4 pixel #D2B29E colored shadow looks like.

```
.shadow{ text-shadow: 4px 4px 2px #D2B29E
}
```

Border

The CSS property to change the border of an element to Decimal 13808286 is called "border". The border property can be set on classes, ids or directly on the HTML element.

This example shows the color as border, it can be applied via the CSS property "border" or "border-color".

```
.border, #border, table{ border:4px solid
#D2B29E }
```

If only the border color should be changed use the property `border-color`.

```
.border{ border-color:#D2B29E }
```

If you want to add a box shadow in that color use:

Here you see how a box with a 4 pixel #D2B29E colored shadow looks like.

```
.boxshadow{ -moz-box-shadow:4px 4px 4px  
4px #D2B29E; -webkit-box-shadow:4px 4px  
4px 4px #D2B29E; box-shadow:4px 4px 4px  
4px #D2B29E }
```

Background

The CSS property to change the background color of an element to Decimal 13808286 is called "background". The background property can be set on classes, ids or directly on the HTML element.

```
.background, #background, body{  
background:#D2B29E }
```

If only the background color should be changed can be used:

```
.background{ background-color:#D2B29E }
```

This example shows the color as background, it is applied via the CSS property "background".

To optimize and compress your CSS code, you can use our [online CSS compressor and optimizer](#) based on csstidy. If you want to create a linear or radial gradient as background or border, check our [CSS Gradient Generator](#).

Hey! You found this booklet interesting? Support Converting Colors with the new Membership Option!

The pro membership hides all ads, plus gives you double the colors in the color bucket, and more awesome pro features!

[Learn more, Memberships starting at \\$2.50/m!](#)

**Follow me
on Twitter!**

@ConvertingColor