

# Converting Colors

Decimal(13810087)

Have a look what the booklet for  
Decimal(13810087) contains.

<b>Decimal(13810087)</b> .....	3
<i><b>Conversions</b></i> .....	4
<i><b>Details</b></i> .....	6
<i><b>Harmonies</b></i> .....	11
<i><b>Previews</b></i> .....	23
<i><b>Color Blindness Simulation</b></i> .....	26
<i><b>CSS Examples</b></i> .....	29

# **Color**

**Decimal(13810087)**

# Conversions

## Conversions Part 1

Format	Color
Hex	D2B9A7
RGB	210, 185, 167
RGB Percent	82%, 73%, 65%
CMY	0.1765, 0.2745, 0.3451
CMYK	0.00, 0.12, 0.20, 0.18
HSL	25°, 32%, 74%
HSV	25°, 20%, 82%
XYZ	50.9024, 51.1896, 43.7570
YIQ	190.4230, 20.6780, -0.2980

# Conversions

## Conversions Part 2

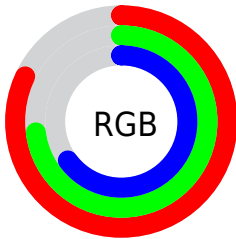
<b>Format</b>	<b>Color</b>
<b>R<sub>YB</sub></b>	210, 198, 167
Decimal	13810087
CIE <sub>Lab</sub>	76.79, 6.07, 12.40
CIE <sub>LCh</sub>	77, 13.804, 63.922
Yxy	51.1896, 0.3490, 0.3510
Android (android.graphics.Color)	4292000167 (0xFFD2B9A7)
YUV	190.4230, -11.5475, 17.1690
Hunter-Lab	71.5469, 1.7875, 13.8220

# Details

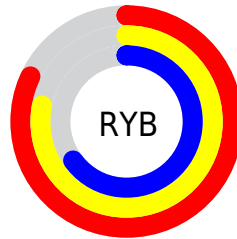
The Decimal color **13810087** is a light color, and the websafe version is hex **CCCCCC**. A complement of this color would be **10993874**, and the grayscale version is **12566463**.

A 20% lighter version of the original color is **16773598**, and **10191987** is the 20% darker color. If you saturate the color by 10%, you get **13806994**, and if you desaturate by 10%, it is **13813180**.

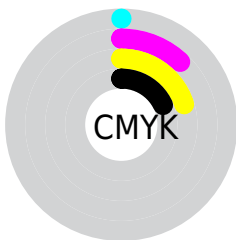
# Distribution



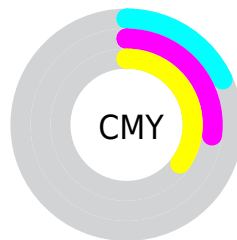
- Red (82%)
- Green (73%)
- Blue (65%)



- Red (82%)
- Yellow (78%)
- Blue (65%)



- Cyan (0%)
- Magenta (12%)
- Yellow (20%)
- Black (18%)



- Cyan (18%)
- Magenta (27%)
- Yellow (35%)

# Brightness & Saturation Gradients

These gradients show how the Decimal color 13810087 changes by changing the brightness by 10 percent. The first figure shows a shift by +10% for each color and the second figure -10%.

Similar to the brightness gradients but the following saturation gradients show a change of the Decimal color 13810087 by changing the saturation by 10% instead.



 13810087

 13810087

16777215

 11968141

 16773598

 10191987

 16777211

 8481626

 6771523

 5192749

 3614232

 2298112

 0

 13810087

 13810087

 13806994

 13813180

 13803901

 13816273

 13800552

 13819622

 13797459

 13822715

 13794366

 13825791

 13791273

 13828095

 13788180

 13785088

# Harmonies

## Analogous

The Analogous color harmony consists of three colors that are next to each other on the color wheel.



14202544



13810087



13024676

# Triad

The Triadic color harmony groups three colors that are evenly spaced from another and form a triangle on the color wheel.



13810087



10536383



12761811

# Complementary

The Complementary color scheme is a pair of colors which are on the opposite of each other on the color wheel.



13810087



10993874

# Split Complementary

Split-complementary colors differ from the complementary color scheme. The scheme consists of three colors, the original color and two neighbors of the complement color.



11714263



13810087



10339531

# Square

The Square scheme is like the rectangle color scheme, but the four colors are evenly spaced on the color wheel.



13810087



11191474



10797780



13678281

# Rectangle

The Rectangle color scheme consists of four colors that form a rectangle on the color wheel.



13810087



12435622



10797780



12434389

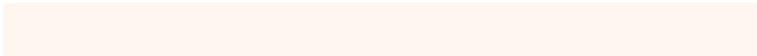


# Sweetspot

The Sweet Spot groups the original color and five complimentary colors.



13810087



16774896



13805504



8419959



0



8421504



# Same Dimension

The Same Dimension uses a secret algorithm to generate beautiful new colors.



13810087



16767679



13815463



6906462



11027968



2691328

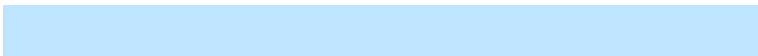


# Inverse Universe

The Inverse Universe completely reimagines the original color for something new.



10993874



12575999



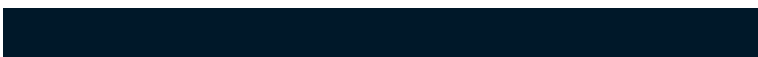
10988498



6186089



25256

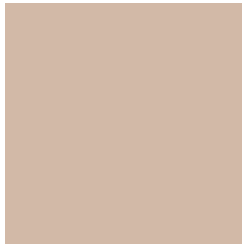


6185



# Previews

## White Background



This preview shows how the Decimal color 13810087 looks on a white background.

## Color Contrast Check

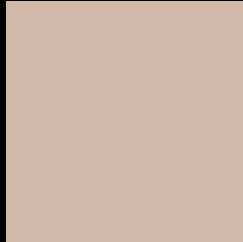
Large Text (above 18pt) WCAG AA × Fail

Any Text WCAG AA × Fail

Large Text (above 18pt) WCAG AAA × Fail

Any Text WCAG AAA × Fail

# Black Background



This preview shows how the Decimal color 13810087 looks on a black background.

## Color Contrast Check

Large Text (above 18pt) WCAG AA ✓ Pass

Any Text WCAG AA ✓ Pass

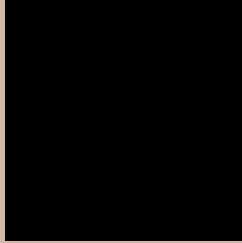
Large Text (above 18pt) WCAG AAA ✓ Pass

Any Text WCAG AAA ✓ Pass

If you want to check with other color combinations, try the [Color Contrast Checker](#).



## Decimal 13810087 Background



This preview shows how black text looks on a background with the Decimal color 13810087.




This preview shows how white text looks on a background with the Decimal color 13810087.

# Color Blindness Simulation

Color vision deficiency is a very complex topic, and I could not describe the different causes any better than Wikipedia does, so if you want to learn more, you should check out their [article about color blindness](#).

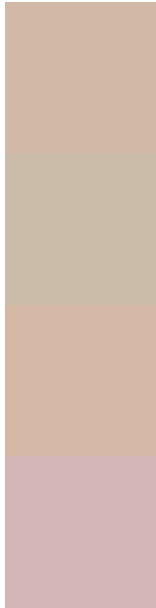
## Dichromacy





**Tritanopia**  
14005699

# Trichromacy



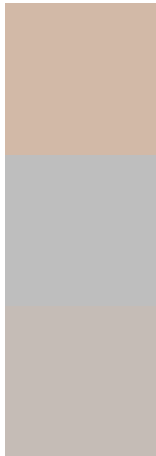
**Original Color**  
13810087

**Protanomaly**  
13286568

**Deuteranomaly**  
14071975

**Tritanomaly**  
13940409

# Monochromacy



**Original Color**  
13810087

**Achromatopsia**  
12500670

**Achromatomaly**  
12958902

# CSS Examples

## Text

The CSS property to change the color of the text to Decimal 13810087 is called "color". The color property can be set on classes, ids or directly on the HTML element.

This example shows how text in the color #D2B9A7 looks like.

```
.text, #text, p{  
  color:#D2B9A7  
}
```

If you want to add a text shadow in that color use the text-shadow property, you can generate a text shadow directly with our [CSS Text Shadow Generator](#).

Here you see how black text with a 4 pixel #D2B9A7 colored shadow looks like.

```
.shadow{ text-shadow: 4px 4px 2px #D2B9A7
}
```

## Border

The CSS property to change the border of an element to Decimal 13810087 is called "border". The border property can be set on classes, ids or directly on the HTML element.

This example shows the color as border, it can be applied via the CSS property "border" or "border-color".

```
.border, #border, table{ border:4px solid
#D2B9A7 }
```

If only the border color should be changed use the property `border-color`.

```
.border{ border-color:#D2B9A7 }
```

If you want to add a box shadow in that color use:

Here you see how a box with a 4 pixel #D2B9A7 colored shadow looks like.

```
.boxshadow{ -moz-box-shadow:4px 4px 4px  
4px #D2B9A7; -webkit-box-shadow:4px 4px  
4px 4px #D2B9A7; box-shadow:4px 4px 4px  
4px #D2B9A7 }
```

# Background

The CSS property to change the background color of an element to Decimal 13810087 is called "background". The background property can be set on classes, ids or directly on the HTML element.

```
.background, #background, body{  
background:#D2B9A7 }
```

If only the background color should be changed can be used:

```
.background{ background-color:#D2B9A7 }
```

This example shows the color as background, it is applied via the CSS property "background".

To optimize and compress your CSS code, you can use our [online CSS compressor and optimizer](#) based on csstidy. If you want to create a linear or radial gradient as background or border, check our [CSS Gradient Generator](#).



Hey! You found this booklet interesting? Support Converting Colors with the new Membership Option!

The pro membership hides all ads, plus gives you double the colors in the color bucket, and more awesome pro features!

**[Learn more, Memberships starting at \\$2.50/m!](#)**

**Follow me  
on Twitter!**

@ConvertingColor