

Converting Colors

Decimal(13810369)

Have a look what the booklet for
Decimal(13810369) contains.

Decimal(13810369)	3
<i>Conversions</i>	4
<i>Details</i>	6
<i>Harmonies</i>	11
<i>Previews</i>	23
<i>Color Blindness Simulation</i>	26
<i>CSS Examples</i>	29

Color

Decimal(13810369)

Conversions

Conversions Part 1

Format	Color
Hex	D2BAC1
RGB	210, 186, 193
RGB Percent	82%, 73%, 76%
CMY	0.1765, 0.2706, 0.2431
CMYK	0.00, 0.11, 0.08, 0.18
HSL	342°, 21%, 78%
HSV	342°, 11%, 82%
XYZ	53.7629, 52.6697, 57.7847
YIQ	193.9740, 12.0570, 7.2650

Conversions

Conversions Part 2

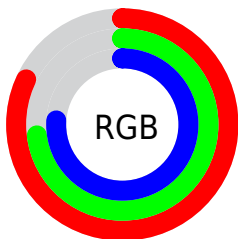
Format	Color
R _Y B	210, 186, 193
Decimal	13810369
CIE Lab	77.68, 9.72, -0.41
CIE LCh	78, 9.726, 357.592
Yxy	52.6697, 0.3274, 0.3207
Android (android.graphics.Color)	4292000449 (0xFFD2BAC1)
YUV	193.9740, -0.4802, 14.0548
Hunter-Lab	72.5739, 5.2288, 3.5939

Details

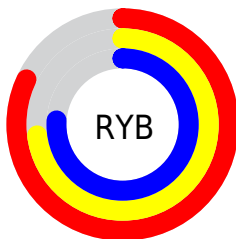
The Decimal color **13810369** is a light color, and the websafe version is hex **CCCCCC**. A complement of this color would be **12243659**, and the grayscale version is **12763842**.

A 20% lighter version of the original color is **16773881**, and **10192268** is the 20% darker color. If you saturate the color by 10%, you get **13804978**, and if you desaturate by 10%, it is **13815760**.

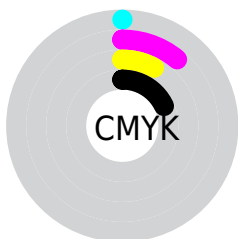
Distribution



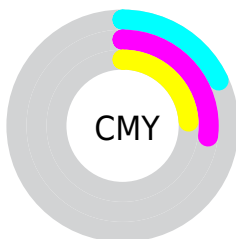
- Red (82%)
- Green (73%)
- Blue (76%)



- Red (82%)
- Yellow (73%)
- Blue (76%)



- Cyan (0%)
- Magenta (11%)
- Yellow (8%)
- Black (18%)



- Cyan (18%)
- Magenta (27%)
- Yellow (24%)

Brightness & Saturation Gradients

These gradients show how the Decimal color 13810369 changes by changing the brightness by 10 percent. The first figure shows a shift by +10% for each color and the second figure -10%.

Similar to the brightness gradients but the following saturation gradients show a change of the Decimal color 13810369 by changing the saturation by 10% instead.

■ 13810369

■ 13810369

16777215

■ 11968422

■ 16773881

■ 10192268

■ 8481906

■ 6837082

■ 5258306

■ 3745324

■ 2298392

■ 0

■ 13810369

■ 13810369

 13804978

 13815760

 13799587

 13821151

 13794196

 13826542

 13788806

 13828092

 13783415

 13828095

 13778024

 13772633

 13767242

 13762621

Harmonies

Analogous

The Analogous color harmony consists of three colors that are next to each other on the color wheel.



13351882



13810369



13941432

Triad

The Triadic color harmony groups three colors that are evenly spaced from another and form a triangle on the color wheel.



13810369



12501680



11388111

Complementary

The Complementary color scheme is a pair of colors which are on the opposite of each other on the color wheel.



13810369



12243659

Split Complementary

Split-complementary colors differ from the complementary color scheme. The scheme consists of three colors, the original color and two neighbors of the complement color.



11191752



13810369



11846838

Square

The Square scheme is like the rectangle color scheme, but the four colors are evenly spaced on the color wheel.



13810369



13156270



11322815



11977170

Rectangle

The Rectangle color scheme consists of four colors that form a rectangle on the color wheel.



13810369



13810611



11322815



11257037

Sweetspot

The Sweet Spot groups the original color and five complimentary colors.



13810369



16775162



13351634



8419964



0



8421504

Same Dimension

The Same Dimension uses a secret algorithm to generate beautiful new colors.



13810369



16767974



13811642



6905441



11010097



2686988

Inverse Universe

The Inverse Universe completely reimagines the original color for something new.



13810369



16767974



12242386



6905441



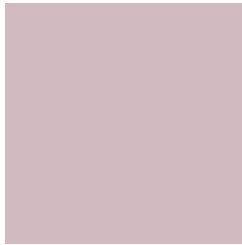
11010097



2686988

Previews

White Background



This preview shows how the Decimal color 13810369 looks on a white background.

Color Contrast Check

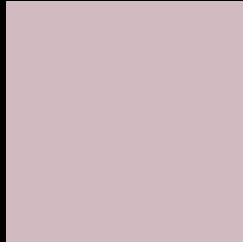
Large Text (above 18pt) WCAG AA × Fail

Any Text WCAG AA × Fail

Large Text (above 18pt) WCAG AAA × Fail

Any Text WCAG AAA × Fail

Black Background



This preview shows how the Decimal color 13810369 looks on a black background.

Color Contrast Check

Large Text (above 18pt) WCAG AA ✓ Pass

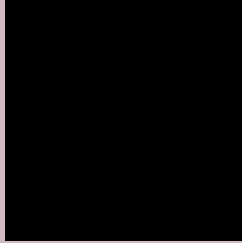
Any Text WCAG AA ✓ Pass

Large Text (above 18pt) WCAG AAA ✓ Pass

Any Text WCAG AAA ✓ Pass

If you want to check with other color combinations, try the [Color Contrast Checker](#).

Decimal 13810369 Background



This preview shows how black text looks on a background with the Decimal color 13810369.



This preview shows how white text looks on a background with the Decimal color 13810369.

Color Blindness Simulation

Color vision deficiency is a very complex topic, and I could not describe the different causes any better than Wikipedia does, so if you want to learn more, you should check out their [article about color blindness](#).

Dichromacy





Tritanopia
13875655

Trichromacy



Original Color
13810369

Protanomaly
13155779

Deuteranomaly
13810369

Tritanomaly
13875653

Monochromacy



Original Color
13810369

Achromatopsia
12763842

Achromatomaly
13156290

CSS Examples

Text

The CSS property to change the color of the text to Decimal 13810369 is called "color". The color property can be set on classes, ids or directly on the HTML element.

This example shows how text in the color #D2BAC1 looks like.

```
.text, #text, p{  
    color:#D2BAC1  
}
```

If you want to add a text shadow in that color use the text-shadow property, you can generate a text shadow directly with our [CSS Text Shadow Generator](#).

Here you see how black text with a 4 pixel #D2BAC1 colored shadow looks like.

```
.shadow{ text-shadow: 4px 4px 2px #D2BAC1
}
```

Border

The CSS property to change the border of an element to Decimal 13810369 is called "border". The border property can be set on classes, ids or directly on the HTML element.

This example shows the color as border, it can be applied via the CSS property "border" or "border-color".

```
.border, #border, table{ border:4px solid
#D2BAC1 }
```

If only the border color should be changed use the property `border-color`.

```
.border{ border-color:#D2BAC1 }
```

If you want to add a box shadow in that color use:

Here you see how a box with a 4 pixel #D2BAC1 colored shadow looks like.

```
.boxshadow{ -moz-box-shadow:4px 4px 4px  
4px #D2BAC1; -webkit-box-shadow:4px 4px  
4px 4px #D2BAC1; box-shadow:4px 4px 4px  
4px #D2BAC1 }
```

Background

The CSS property to change the background color of an element to Decimal 13810369 is called "background". The background property can be set on classes, ids or directly on the HTML element.

```
.background, #background, body{  
background:#D2BAC1 }
```

If only the background color should be changed can be used:

```
.background{ background-color:#D2BAC1 }
```

This example shows the color as background, it is applied via the CSS property "background".

To optimize and compress your CSS code, you can use our [online CSS compressor and optimizer](#) based on csstidy. If you want to create a linear or radial gradient as background or border, check our [CSS Gradient Generator](#).

Hey! You found this booklet interesting? Support Converting Colors with the new Membership Option!

The pro membership hides all ads, plus gives you double the colors in the color bucket, and more awesome pro features!

[Learn more, Memberships starting at \\$2.50/m!](#)

**Follow me
on Twitter!**

@ConvertingColor