

Converting Colors

Decimal(13810884)

Have a look what the booklet for
Decimal(13810884) contains.

Decimal(13810884)	3
<i>Conversions</i>	4
<i>Details</i>	6
<i>Harmonies</i>	11
<i>Previews</i>	23
<i>Color Blindness Simulation</i>	26
<i>CSS Examples</i>	29

Color

Decimal(13810884)

Conversions

Conversions Part 1

Format	Color
Hex	D2BCC4
RGB	210, 188, 196
RGB Percent	82%, 74%, 77%
CMY	0.1765, 0.2627, 0.2314
CMYK	0.00, 0.10, 0.07, 0.18
HSL	338°, 20%, 78%
HSV	338°, 10%, 82%
XYZ	54.5254, 53.6536, 59.7069
YIQ	195.4900, 10.5440, 7.1520

Conversions

Conversions Part 2

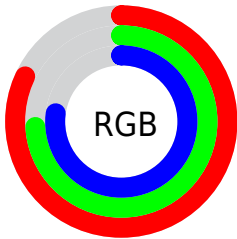
Format	Color
R _Y B	210, 188, 196
Decimal	13810884
CIE Lab	78.26, 9.16, -1.19
CIE LCh	78, 9.241, 352.632
Yxy	53.6536, 0.3248, 0.3196
Android (android.graphics.Color)	4292000964 (0xFFD2BCC4)
YUV	195.4900, 0.2514, 12.7253
Hunter-Lab	73.2486, 4.6881, 2.9451

Details

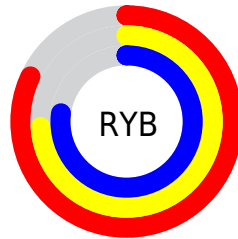
The Decimal color **13810884** is a light color, and the websafe version is hex **CCCCCC**. A complement of this color would be **12374730**, and the grayscale version is **12829635**.

A 20% lighter version of the original color is **16774397**, and **10192782** is the 20% darker color. If you saturate the color by 10%, you get **13805495**, and if you desaturate by 10%, it is **13816273**.

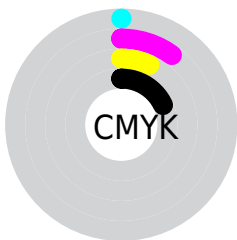
Distribution



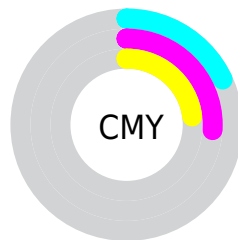
- Red (82%)
- Green (74%)
- Blue (77%)



- Red (82%)
- Yellow (74%)
- Blue (77%)



- Cyan (0%)
- Magenta (10%)
- Yellow (7%)
- Black (18%)



- Cyan (18%)
- Magenta (26%)
- Yellow (23%)

Brightness & Saturation Gradients

These gradients show how the Decimal color 13810884 changes by changing the brightness by 10 percent. The first figure shows a shift by +10% for each color and the second figure -10%.

Similar to the brightness gradients but the following saturation gradients show a change of the Decimal color 13810884 by changing the saturation by 10% instead.

■ 13810884

■ 13810884

16777215

■ 11968937

■ 16774397

■ 10192782

■ 8482165

■ 6837596

■ 5258821

■ 3745838

■ 2298906

■ 262144

■ 0

 13810884

 13810884

 13805495

 13816273

 13800105

 13821663

 13794716

 13827052

 13789327

 13828089

 13783937

 13828095

 13778548

 13773158

 13767769

 13762636

Harmonies

Analogous

The Analogous color harmony consists of three colors that are next to each other on the color wheel.



13352396



13810884



13941947

Triad

The Triadic color harmony groups three colors that are evenly spaced from another and form a triangle on the color wheel.



13810884



12764082



11519439

Complementary

The Complementary color scheme is a pair of colors which are on the opposite of each other on the color wheel.



13810884



12374730

Split Complementary

Split-complementary colors differ from the complementary color scheme. The scheme consists of three colors, the original color and two neighbors of the complement color.



11323336



13810884



12109239

Square

The Square scheme is like the rectangle color scheme, but the four colors are evenly spaced on the color wheel.



13810884



13353137



11585471



11977682

Rectangle

The Rectangle color scheme consists of four colors that form a rectangle on the color wheel.



13810884



13876662



11585471



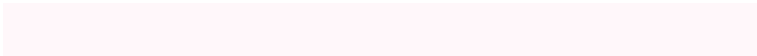
11388621

Sweetspot

The Sweet Spot groups the original color and five complimentary colors.



13810884



16775162



13286610



8419964



0



8421504

Same Dimension

The Same Dimension uses a secret algorithm to generate beautiful new colors.



13810884



16768746



13811644



6905442



11010109



2686991

Inverse Universe

The Inverse Universe completely reimagines the original color for something new.



13810884



16768746



12373970



6905442



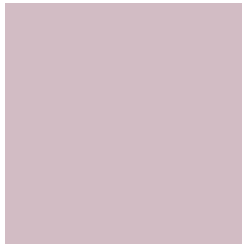
11010109



2686991

Previews

White Background



This preview shows how the Decimal color 13810884 looks on a white background.

Color Contrast Check

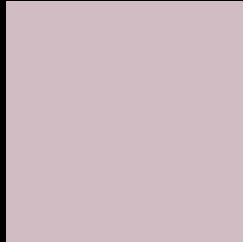
Large Text (above 18pt) WCAG AA × Fail

Any Text WCAG AA × Fail

Large Text (above 18pt) WCAG AAA × Fail

Any Text WCAG AAA × Fail

Black Background



This preview shows how the Decimal color 13810884 looks on a black background.

Color Contrast Check

Large Text (above 18pt) WCAG AA ✓ Pass

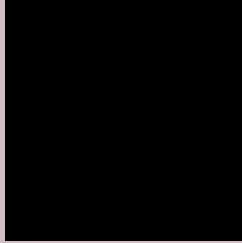
Any Text WCAG AA ✓ Pass

Large Text (above 18pt) WCAG AAA ✓ Pass

Any Text WCAG AAA ✓ Pass

If you want to check with other color combinations, try the [Color Contrast Checker](#).

Decimal 13810884 Background



This preview shows how black text looks on a background with the Decimal color 13810884.



This preview shows how white text looks on a background with the Decimal color 13810884.

Color Blindness Simulation

Color vision deficiency is a very complex topic, and I could not describe the different causes any better than Wikipedia does, so if you want to learn more, you should check out their [article about color blindness](#).

Dichromacy



Original Color
13810884

Protanopia
12894663

Deuteranopia
13876420



Tritanopia
13876170

Trichromacy



Original Color
13810884

Protanomaly
13221830

Deuteranomaly
13876420

Tritanomaly
13876168

Monochromacy



Original Color
13810884

Achromatopsia
12829635

Achromatomaly
13156547

CSS Examples

Text

The CSS property to change the color of the text to Decimal 13810884 is called "color". The color property can be set on classes, ids or directly on the HTML element.

This example shows how text in the color #D2BCC4 looks like.

```
.text, #text, p{  
    color:#D2BCC4  
}
```

If you want to add a text shadow in that color use the text-shadow property, you can generate a text shadow directly with our [CSS Text Shadow Generator](#).

Here you see how black text with a 4 pixel #D2BCC4 colored shadow looks like.

```
.shadow{ text-shadow: 4px 4px 2px #D2BCC4
}
```

Border

The CSS property to change the border of an element to Decimal 13810884 is called "border". The border property can be set on classes, ids or directly on the HTML element.

This example shows the color as border, it can be applied via the CSS property "border" or "border-color".

```
.border, #border, table{ border:4px solid
#D2BCC4 }
```

If only the border color should be changed use the property `border-color`.

```
.border{ border-color:#D2BCC4 }
```

If you want to add a box shadow in that color use:

Here you see how a box with a 4 pixel #D2BCC4 colored shadow looks like.

```
.boxshadow{ -moz-box-shadow:4px 4px 4px  
4px #D2BCC4; -webkit-box-shadow:4px 4px  
4px 4px #D2BCC4; box-shadow:4px 4px 4px  
4px #D2BCC4 }
```

Background

The CSS property to change the background color of an element to Decimal 13810884 is called "background". The background property can be set on classes, ids or directly on the HTML element.

```
.background, #background, body{  
background:#D2BCC4 }
```

If only the background color should be changed can be used:

```
.background{ background-color:#D2BCC4 }
```

This example shows the color as background, it is applied via the CSS property "background".

To optimize and compress your CSS code, you can use our [online CSS compressor and optimizer](#) based on csstidy. If you want to create a linear or radial gradient as background or border, check our [CSS Gradient Generator](#).

Hey! You found this booklet interesting? Support Converting Colors with the new Membership Option!

The pro membership hides all ads, plus gives you double the colors in the color bucket, and more awesome pro features!

[Learn more, Memberships starting at \\$2.50/m!](#)

**Follow me
on Twitter!**

@ConvertingColor