

Converting Colors

Decimal(13812166)

Have a look what the booklet for
Decimal(13812166) contains.

Decimal(13812166)	3
<i>Conversions</i>	4
<i>Details</i>	6
<i>Harmonies</i>	11
<i>Previews</i>	23
<i>Color Blindness Simulation</i>	26
<i>CSS Examples</i>	29

Color

Decimal(13812166)

Conversions

Conversions Part 1

Format	Color
Hex	D2C1C6
RGB	210, 193, 198
RGB Percent	82%, 76%, 78%
CMY	0.1765, 0.2431, 0.2235
CMYK	0.00, 0.08, 0.06, 0.18
HSL	342°, 16%, 79%
HSV	342°, 8%, 82%
XYZ	55.8413, 55.9188, 61.2763
YIQ	198.6530, 8.5270, 5.1590

Conversions

Conversions Part 2

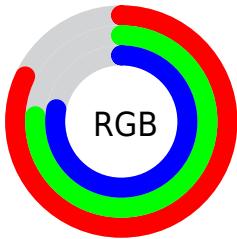
Format	Color
R_{YB}	210, 193, 198
Decimal	13812166
CIE Lab	79.57, 6.84, -0.35
CIE LCh	80, 6.850, 357.060
Yxy	55.9188, 0.3227, 0.3232
Android (android.graphics.Color)	4292002246 (0xFFD2C1C6)
YUV	198.6530, -0.3219, 9.9513
Hunter-Lab	74.7789, 2.4324, 3.7610

Details

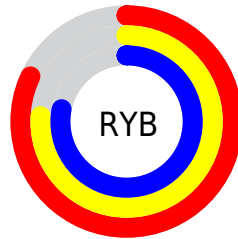
The Decimal color **13812166** is a light color, and the websafe version is hex **CCCCCC**. A complement of this color would be **12702413**, and the grayscale version is **13092807**.

A 20% lighter version of the original color is **16775679**, and **10193808** is the 20% darker color. If you saturate the color by 10%, you get **13806775**, and if you desaturate by 10%, it is **13817557**.

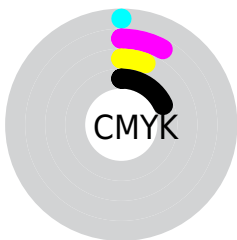
Distribution



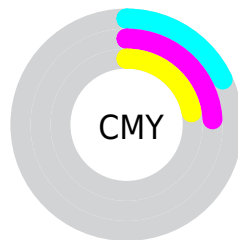
- Red (82%)
- Green (76%)
- Blue (78%)



- Red (82%)
- Yellow (76%)
- Blue (78%)



- Cyan (0%)
- Magenta (8%)
- Yellow (6%)
- Black (18%)



- Cyan (18%)
- Magenta (24%)
- Yellow (22%)

Brightness & Saturation Gradients

These gradients show how the Decimal color 13812166 changes by changing the brightness by 10 percent. The first figure shows a shift by +10% for each color and the second figure -10%.

Similar to the brightness gradients but the following saturation gradients show a change of the Decimal color 13812166 by changing the saturation by 10% instead.

 13812166

 13812166

16777215

 11970219

 16775679

 10193808

 8483447

 6838622

 5259846

 3746864

 2299675

 851968

 0

 13812166

 13812166

 13806775

 13817557

 13801384

 13822948

 13795994

 13828082

 13790603

 13828095

 13785212

 13779821

 13774430

 13769039

 13763649

Harmonies

Analogous

The Analogous color harmony consists of three colors that are next to each other on the color wheel.



13484748



13812166



13877696

Triad

The Triadic color harmony groups three colors that are evenly spaced from another and form a triangle on the color wheel.



13812166



12896186



12110032

Complementary

The Complementary color scheme is a pair of colors which are on the opposite of each other on the color wheel.



13812166



12702413

Split Complementary

Split-complementary colors differ from the complementary color scheme. The scheme consists of three colors, the original color and two neighbors of the complement color.



11979211



13812166



12437694

Square

The Square scheme is like the rectangle color scheme, but the four colors are evenly spaced on the color wheel.



13812166



13354169



12110276



12502738

Rectangle

The Rectangle color scheme consists of four colors that form a rectangle on the color wheel.



13812166



13812412



12110276



12044494

Sweetspot

The Sweet Spot groups the original color and five complimentary colors.



13812166



16775931



13484498



8420734



0



8421504

Same Dimension

The Same Dimension uses a secret algorithm to generate beautiful new colors.



13812166



16770797



13812929



6905441



11010098



2686988

Inverse Universe

The Inverse Universe completely reimagines the original color for something new.



13812166



16770797



12701650



6905441



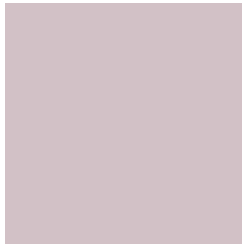
11010098



2686988

Previews

White Background



This preview shows how the Decimal color 13812166 looks on a white background.

Color Contrast Check

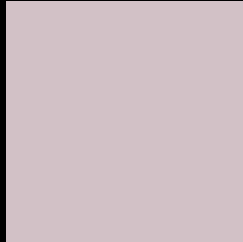
Large Text (above 18pt) WCAG AA × Fail

Any Text WCAG AA × Fail

Large Text (above 18pt) WCAG AAA × Fail

Any Text WCAG AAA × Fail

Black Background



This preview shows how the Decimal color 13812166 looks on a black background.

Color Contrast Check

Large Text (above 18pt) WCAG AA ✓ Pass

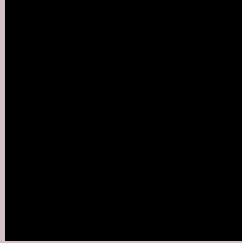
Any Text WCAG AA ✓ Pass

Large Text (above 18pt) WCAG AAA ✓ Pass

Any Text WCAG AAA ✓ Pass

If you want to check with other color combinations, try the [Color Contrast Checker](#).

Decimal 13812166 Background



This preview shows how black text looks on a background with the Decimal color 13812166.



This preview shows how white text looks on a background with the Decimal color 13812166.

Color Blindness Simulation

Color vision deficiency is a very complex topic, and I could not describe the different causes any better than Wikipedia does, so if you want to learn more, you should check out their [article about color blindness](#).

Dichromacy



Original Color
13812166

Protanopia
13157576

Deuteranopia
14204870



Tritanopia
13877455

Trichromacy



Original Color
13812166

Protanomaly
13419463

Deuteranomaly
14074054

Tritanomaly
13877452

Monochromacy



Original Color
13812166

Achromatopsia
13092807

Achromatomaly
13354439

CSS Examples

Text

The CSS property to change the color of the text to Decimal 13812166 is called "color". The color property can be set on classes, ids or directly on the HTML element.

This example shows how text in the color #D2C1C6 looks like.

```
.text, #text, p{  
    color:#D2C1C6  
}
```

If you want to add a text shadow in that color use the text-shadow property, you can generate a text shadow directly with our [CSS Text Shadow Generator](#).

Here you see how black text with a 4 pixel #D2C1C6 colored shadow looks like.

```
.shadow{ text-shadow: 4px 4px 2px #D2C1C6
}
```

Border

The CSS property to change the border of an element to Decimal 13812166 is called "border". The border property can be set on classes, ids or directly on the HTML element.

This example shows the color as border, it can be applied via the CSS property "border" or "border-color".

```
.border, #border, table{ border:4px solid
#D2C1C6 }
```

If only the border color should be changed use the property `border-color`.

```
.border{ border-color:#D2C1C6 }
```

If you want to add a box shadow in that color use:

Here you see how a box with a 4 pixel #D2C1C6 colored shadow looks like.

```
.boxshadow{ -moz-box-shadow:4px 4px 4px  
4px #D2C1C6; -webkit-box-shadow:4px 4px  
4px 4px #D2C1C6; box-shadow:4px 4px 4px  
4px #D2C1C6 }
```

Background

The CSS property to change the background color of an element to Decimal 13812166 is called "background". The background property can be set on classes, ids or directly on the HTML element.

```
.background, #background, body{  
background:#D2C1C6 }
```

If only the background color should be changed can be used:

```
.background{ background-color:#D2C1C6 }
```

This example shows the color as background, it is applied via the CSS property "background".

To optimize and compress your CSS code, you can use our [online CSS compressor and optimizer](#) based on csstidy. If you want to create a linear or radial gradient as background or border, check our [CSS Gradient Generator](#).

Hey! You found this booklet interesting? Support Converting Colors with the new Membership Option!

The pro membership hides all ads, plus gives you double the colors in the color bucket, and more awesome pro features!

[Learn more, Memberships starting at \\$2.50/m!](#)

**Follow me
on Twitter!**

@ConvertingColor