

Converting Colors

Decimal(13866865)

Have a look what the booklet for
Decimal(13866865) contains.

Decimal(13866865)	3
<i>Conversions</i>	4
<i>Details</i>	6
<i>Harmonies</i>	11
<i>Previews</i>	23
<i>Color Blindness Simulation</i>	26
<i>CSS Examples</i>	29

Color

Decimal(13866865)

Conversions

Conversions Part 1

Format	Color
Hex	D39771
RGB	211, 151, 113
RGB Percent	83%, 59%, 44%
CMY	0.1725, 0.4078, 0.5569
CMYK	0.00, 0.28, 0.46, 0.17
HSL	23°, 53%, 64%
HSV	23°, 46%, 83%
XYZ	40.9112, 37.1744, 20.6419
YIQ	164.6080, 47.9580, 0.9020

Conversions

Conversions Part 2

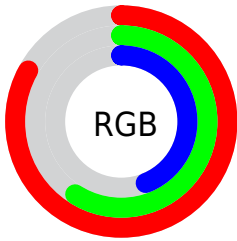
Format	Color
R_{YB}	211, 175, 113
Decimal	13866865
CIE _{Lab}	67.41, 18.00, 28.91
CIE _{LCh}	67, 34.060, 58.092
Yxy	37.1744, 0.4144, 0.3765
Android (android.graphics.Color)	4292056945 (0xFFD39771)
YUV	164.6080, -25.4427, 40.6858
Hunter-Lab	60.9708, 13.0741, 22.6067

Details

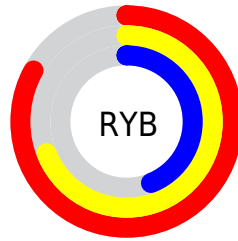
The Decimal color **13866865** is a light color, and the websafe version is hex **CC9966**. A complement of this color would be **7450067**, and the grayscale version is **10855845**.

A 20% lighter version of the original color is **16764325**, and **10118208** is the 20% darker color. If you saturate the color by 10%, you get **13863516**, and if you desaturate by 10%, it is **13870214**.

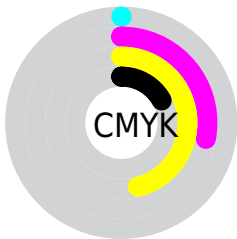
Distribution



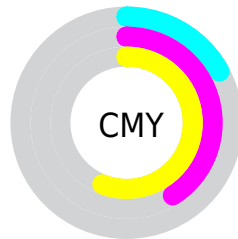
- Red (83%)
- Green (59%)
- Blue (44%)



- Red (83%)
- Yellow (69%)
- Blue (44%)



- Cyan (0%)
- Magenta (28%)
- Yellow (46%)
- Black (17%)



- Cyan (17%)
- Magenta (41%)
- Yellow (56%)

Brightness & Saturation Gradients

These gradients show how the Decimal color 13866865 changes by changing the brightness by 10 percent. The first figure shows a shift by +10% for each color and the second figure -10%.

Similar to the brightness gradients but the following saturation gradients show a change of the Decimal color 13866865 by changing the saturation by 10% instead.

 13866865

 13866865

16777215

 11959640

 16764325

 10118208

 16771776

 8277034


 16777180

 6501652

 16777209

 4857600

 3082752

 1114112

 0

 13866865

 13866865

 13863516

 13870214

 13860167

 13873563

 13856818

 13876912

 13853469

 13880261

 13850120

 13883611

 13849088

 13886960

 13890047

 13893375

 13893631

Harmonies

Analogous

The Analogous color harmony consists of three colors that are next to each other on the color wheel.



14716809



13866865



12296807

Triad

The Triadic color harmony groups three colors that are evenly spaced from another and form a triangle on the color wheel.



13866865



5289377



10853850

Complementary

The Complementary color scheme is a pair of colors which are on the opposite of each other on the color wheel.



13866865



7450067

Split Complementary

Split-complementary colors differ from the complementary color scheme. The scheme consists of three colors, the original color and two neighbors of the complement color.



7776481



13866865



3388608

Square

The Square scheme is like the rectangle color scheme, but the four colors are evenly spaced on the color wheel.



13866865



7844227



4567255



13210309

Rectangle

The Rectangle color scheme consists of four colors that form a rectangle on the color wheel.



13866865



10922089



4567255



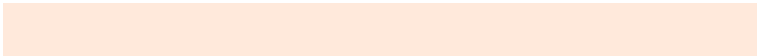
9871838

Sweetspot

The Sweet Spot groups the original color and five complimentary colors.



13866865



16771547



13857197



8417898



0



8421504

Same Dimension

The Same Dimension uses a secret algorithm to generate beautiful new colors.



13866865



16754800



13879409



6906462



11026688



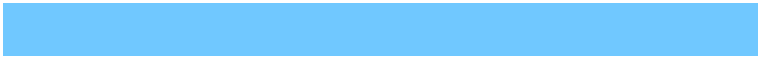
2691072

Inverse Universe

The Inverse Universe completely reimagines the original color for something new.



7450067



7391487



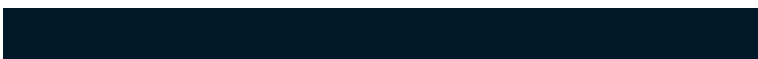
7437523



6186089



26536



6441

Previews

White Background



This preview shows how the Decimal color 13866865 looks on a white background.

Color Contrast Check

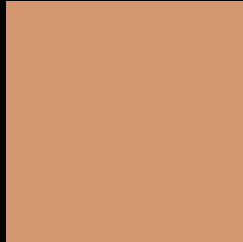
Large Text (above 18pt) WCAG AA × Fail

Any Text WCAG AA × Fail

Large Text (above 18pt) WCAG AAA × Fail

Any Text WCAG AAA × Fail

Black Background



This preview shows how the Decimal color 13866865 looks on a black background.

Color Contrast Check

Large Text (above 18pt) WCAG AA ✓ Pass

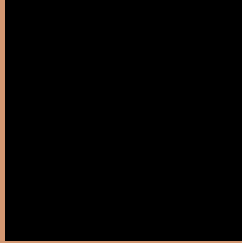
Any Text WCAG AA ✓ Pass

Large Text (above 18pt) WCAG AAA ✓ Pass

Any Text WCAG AAA ✓ Pass

If you want to check with other color combinations, try the [Color Contrast Checker](#).

Decimal 13866865 Background



This preview shows how black text looks on a background with the Decimal color 13866865.



This preview shows how white text looks on a background with the Decimal color 13866865.

Color Blindness Simulation

Color vision deficiency is a very complex topic, and I could not describe the different causes any better than Wikipedia does, so if you want to learn more, you should check out their [article about color blindness](#).

Dichromacy





Tritanopia
14127516

Trichromacy



Original Color
13866865

Protanomaly
12427125

Deuteranomaly
13278064

Tritanomaly
14062476

Monochromacy



Original Color
13866865

Achromatopsia
10855845

Achromatomaly
11968658

CSS Examples

Text

The CSS property to change the color of the text to Decimal 13866865 is called "color". The color property can be set on classes, ids or directly on the HTML element.

This example shows how text in the color #D39771 looks like.

```
.text, #text, p{  
  color:#D39771  
}
```

If you want to add a text shadow in that color use the text-shadow property, you can generate a text shadow directly with our [CSS Text Shadow Generator](#).

Here you see how black text with a 4 pixel #D39771 colored shadow looks like.

```
.shadow{ text-shadow: 4px 4px 2px #D39771
}
```

Border

The CSS property to change the border of an element to Decimal 13866865 is called "border". The border property can be set on classes, ids or directly on the HTML element.

This example shows the color as border, it can be applied via the CSS property "border" or "border-color".

```
.border, #border, table{ border:4px solid
#D39771 }
```

If only the border color should be changed use the property border-color.

```
.border{ border-color:#D39771 }
```

If you want to add a box shadow in that color use:

Here you see how a box with a 4 pixel #D39771 colored shadow looks like.

```
.boxshadow{ -moz-box-shadow:4px 4px 4px  
4px #D39771; -webkit-box-shadow:4px 4px  
4px 4px #D39771; box-shadow:4px 4px 4px  
4px #D39771 }
```

Background

The CSS property to change the background color of an element to Decimal 13866865 is called "background". The background property can be set on classes, ids or directly on the HTML element.

```
.background, #background, body{  
background:#D39771 }
```

If only the background color should be changed can be used:

```
.background{ background-color:#D39771 }
```

This example shows the color as background, it is applied via the CSS property "background".

To optimize and compress your CSS code, you can use our [online CSS compressor and optimizer](#) based on csstidy. If you want to create a linear or radial gradient as background or border, check our [CSS Gradient Generator](#).

Hey! You found this booklet interesting? Support Converting Colors with the new Membership Option!

The pro membership hides all ads, plus gives you double the colors in the color bucket, and more awesome pro features!

[Learn more, Memberships starting at \\$2.50/m!](#)

**Follow me
on Twitter!**

@ConvertingColor