

Converting Colors

Decimal(13867417)

Have a look what the booklet for
Decimal(13867417) contains.

Decimal(13867417)	3
<i>Conversions</i>	4
<i>Details</i>	6
<i>Harmonies</i>	11
<i>Previews</i>	23
<i>Color Blindness Simulation</i>	26
<i>CSS Examples</i>	29

Color

Decimal(13867417)

Conversions

Conversions Part 1

Format	Color
Hex	D39999
RGB	211, 153, 153
RGB Percent	83%, 60%, 60%
CMY	0.1725, 0.4000, 0.4000
CMYK	0.00, 0.27, 0.27, 0.17
HSL	0°, 40%, 71%
HSV	0°, 27%, 83%
XYZ	44.0050, 38.9313, 35.3322
YIQ	170.3420, 34.5680, 12.2960

Conversions

Conversions Part 2

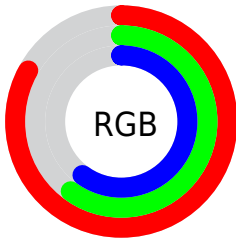
Format	Color
R _Y B	211, 153, 153
Decimal	13867417
CIE Lab	68.70, 21.71, 8.60
CIE LCh	69, 23.353, 21.611
Yxy	38.9313, 0.3721, 0.3292
Android (android.graphics.Color)	4292057497 (0xFFD39999)
YUV	170.3420, -8.5496, 35.6571
Hunter-Lab	62.3949, 16.6988, 10.1025

Details

The Decimal color **13867417** is a light color, and the websafe version is hex **CC9999**. A complement of this color would be **10081235**, and the grayscale version is **11184810**.

A 20% lighter version of the original color is **16765135**, and **10184294** is the 20% darker color. If you saturate the color by 10%, you get **13862020**, and if you desaturate by 10%, it is **13872814**.

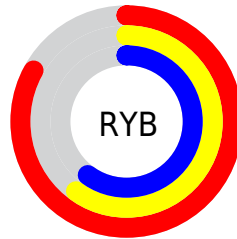
Distribution



Red (83%)

Green (60%)

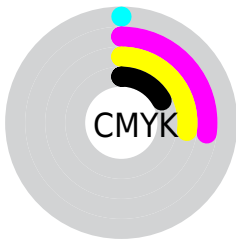
Blue (60%)



Red (83%)

Yellow (60%)

Blue (60%)

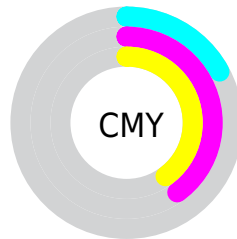


Cyan (0%)

Magenta (27%)

Yellow (27%)

Black (17%)



Cyan (17%)

Magenta (40%)

Yellow (40%)

Brightness & Saturation Gradients

These gradients show how the Decimal color 13867417 changes by changing the brightness by 10 percent. The first figure shows a shift by +10% for each color and the second figure -10%.

Similar to the brightness gradients but the following saturation gradients show a change of the Decimal color 13867417 by changing the saturation by 10% instead.

 13867417

 13867417

16777215

 12025727

 16765135

 10184294

 16772331

 8408398

 6698551

 5054242

 3410188

 1966081

 0

 13867417

 13867417

 13862020

 13872814

 13856623

 13878211

 13851226

 13883608

 13845829

 13889005

 13840175

 13893631

 13834778

 13829381

 13828096

Harmonies

Analogous

The Analogous color harmony consists of three colors that are next to each other on the color wheel.



13539758



13867417



13475207

Triad

The Triadic color harmony groups three colors that are evenly spaced from another and form a triangle on the color wheel.



13867417



9416845



8825809

Complementary

The Complementary color scheme is a pair of colors which are on the opposite of each other on the color wheel.



13867417



10081235

Split Complementary

Split-complementary colors differ from the complementary color scheme. The scheme consists of three colors, the original color and two neighbors of the complement color.



7385544



13867417



7975841

Square

The Square scheme is like the rectangle color scheme, but the four colors are evenly spaced on the color wheel.



13867417



10988416



7058358



10724559

Rectangle

The Rectangle color scheme consists of four colors that form a rectangle on the color wheel.



13867417



12821120



7058358



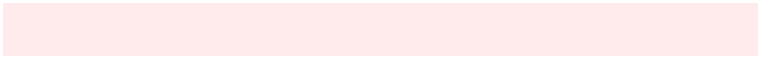
8236495

Sweetspot

The Sweet Spot groups the original color and five complimentary colors.



13867417



16772075



13867475



8418163



0



8421504

Same Dimension

The Same Dimension uses a secret algorithm to generate beautiful new colors.



13867417



16755627



13874841



6905438



11010048



2686976

Inverse Universe

The Inverse Universe completely reimagines the original color for something new.



10081235



11272191



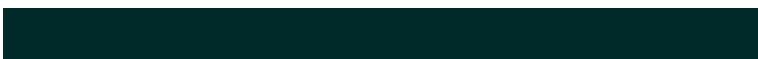
10073811



6187369



43176



10537

Previews

White Background



This preview shows how the Decimal color 13867417 looks on a white background.

Color Contrast Check

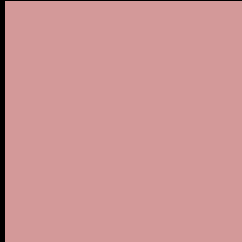
Large Text (above 18pt) WCAG AA × Fail

Any Text WCAG AA × Fail

Large Text (above 18pt) WCAG AAA × Fail

Any Text WCAG AAA × Fail

Black Background



This preview shows how the Decimal color 13867417 looks on a black background.

Color Contrast Check

Large Text (above 18pt) WCAG AA ✓ Pass

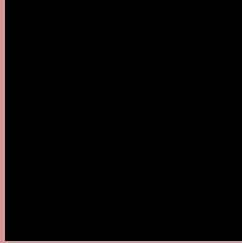
Any Text WCAG AA ✓ Pass

Large Text (above 18pt) WCAG AAA ✓ Pass

Any Text WCAG AAA ✓ Pass

If you want to check with other color combinations, try the [Color Contrast Checker](#).

Decimal 13867417 Background



This preview shows how black text looks on a background with the Decimal color 13867417.




This preview shows how white text looks on a background with the Decimal color 13867417.

Color Blindness Simulation

Color vision deficiency is a very complex topic, and I could not describe the different causes any better than Wikipedia does, so if you want to learn more, you should check out their [article about color blindness](#).

Dichromacy





Tritanopia
13932451

Trichromacy



Original Color
13867417

Protanomaly
12296862

Deuteranomaly
13016984

Tritanomaly
13932703

Monochromacy



Original Color
13867417

Achromatopsia
11184810

Achromatomaly
12166308

CSS Examples

Text

The CSS property to change the color of the text to Decimal 13867417 is called "color". The color property can be set on classes, ids or directly on the HTML element.

This example shows how text in the color #D39999 looks like.

```
.text, #text, p{  
    color:#D39999  
}
```

If you want to add a text shadow in that color use the text-shadow property, you can generate a text shadow directly with our [CSS Text Shadow Generator](#).

Here you see how black text with a 4 pixel #D39999 colored shadow looks like.

```
.shadow{ text-shadow: 4px 4px 2px #D39999
}
```

Border

The CSS property to change the border of an element to Decimal 13867417 is called "border". The border property can be set on classes, ids or directly on the HTML element.

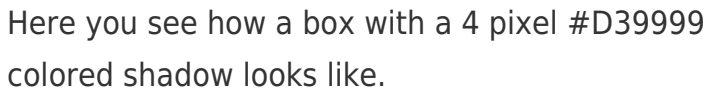
This example shows the color as border, it can be applied via the CSS property "border" or "border-color".

```
.border, #border, table{ border:4px solid
#D39999 }
```

If only the border color should be changed use the property `border-color`.

```
.border{ border-color:#D39999 }
```

If you want to add a box shadow in that color use:



Here you see how a box with a 4 pixel #D39999 colored shadow looks like.

```
.boxshadow{ -moz-box-shadow:4px 4px 4px  
4px #D39999; -webkit-box-shadow:4px 4px  
4px 4px #D39999; box-shadow:4px 4px 4px  
4px #D39999 }
```

Background

The CSS property to change the background color of an element to Decimal 13867417 is called "background". The background property can be set on classes, ids or directly on the HTML element.

```
.background, #background, body{  
background:#D39999 }
```

If only the background color should be changed can be used:

```
.background{ background-color:#D39999 }
```

This example shows the color as background, it is applied via the CSS property "background".

To optimize and compress your CSS code, you can use our [online CSS compressor and optimizer](#) based on csstidy. If you want to create a linear or radial gradient as background or border, check our [CSS Gradient Generator](#).

Hey! You found this booklet interesting? Support Converting Colors with the new Membership Option!

The pro membership hides all ads, plus gives you double the colors in the color bucket, and more awesome pro features!

[Learn more, Memberships starting at \\$2.50/m!](#)

**Follow me
on Twitter!**

@ConvertingColor