

# Converting Colors

Decimal(13870244)

Have a look what the booklet for  
Decimal(13870244) contains.

<b>Decimal(13870244)</b> .....	3
<i><b>Conversions</b></i> .....	4
<i><b>Details</b></i> .....	6
<i><b>Harmonies</b></i> .....	11
<i><b>Previews</b></i> .....	23
<i><b>Color Blindness Simulation</b></i> .....	26
<i><b>CSS Examples</b></i> .....	29

# **Color**

**Decimal(13870244)**

# Conversions

## Conversions Part 1

Format	Color
Hex	D3A4A4
RGB	211, 164, 164
RGB Percent	83%, 64%, 64%
CMY	0.1725, 0.3569, 0.3569
CMYK	0.00, 0.22, 0.22, 0.17
HSL	0°, 35%, 74%
HSV	0°, 22%, 83%
XYZ	46.8403, 43.0801, 40.9685
YIQ	178.0530, 28.0120, 9.9640

# Conversions

## Conversions Part 2

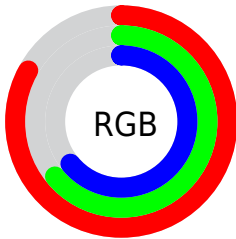
Format	Color
<a href="#">RYB</a>	<a href="#">211, 164, 164</a>
Decimal	<a href="#">13870244</a>
CIELab	<a href="#">71.61, 17.31, 6.66</a>
CIElCh	<a href="#">72, 18.551, 21.053</a>
Yxy	<a href="#">43.0801, 0.3579, 0.3291</a>
Android (android.graphics.Color)	<a href="#">4292060324 (0xFFD3A4A4)</a>
YUV	<a href="#">178.0530, -6.9281, 28.8945</a>
Hunter-Lab	<a href="#">65.6355, 12.5232, 8.9370</a>

# Details

The Decimal color **13870244** is a light color, and the websafe version is hex **CC9999**. A complement of this color would be **10802131**, and the grayscale version is **11711154**.

A 20% lighter version of the original color is **16767963**, and **10252400** is the 20% darker color. If you saturate the color by 10%, you get **13864847**, and if you desaturate by 10%, it is **13875641**.

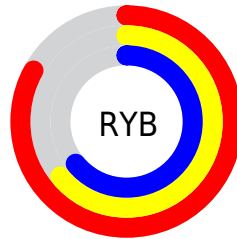
# Distribution



Red (83%)

Green (64%)

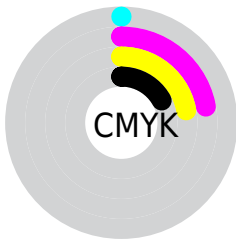
Blue (64%)



Red (83%)

Yellow (64%)

Blue (64%)

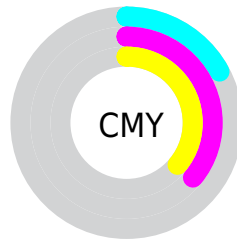


Cyan (0%)

Magenta (22%)

Yellow (22%)

Black (17%)



Cyan (17%)

Magenta (36%)

Yellow (36%)

# Brightness & Saturation Gradients

These gradients show how the Decimal color 13870244 changes by changing the brightness by 10 percent. The first figure shows a shift by +10% for each color and the second figure -10%.

Similar to the brightness gradients but the following saturation gradients show a change of the Decimal color 13870244 by changing the saturation by 10% instead.



 13870244

 13870244

16777215

 12028554

 16767963

 10252400

 16775415

 8476504

 6766657

 5122347

 3544086

 2293760

 0

 13870244

 13870244

 13864847

 13875641

 13859450

 13881038

 13854053

 13886435

 13848656

 13891832

 13843259

 13893631

 13837605

 13832208

 13828096

# Harmonies

## Analogous

The Analogous color harmony consists of three colors that are next to each other on the color wheel.



13542581



13870244



13543318

# Triad

The Triadic color harmony groups three colors that are evenly spaced from another and form a triangle on the color wheel.



13870244



10270362



9876176

# Complementary

The Complementary color scheme is a pair of colors which are on the opposite of each other on the color wheel.



13870244



10802131

# Split Complementary

Split-complementary colors differ from the complementary color scheme. The scheme consists of three colors, the original color and two neighbors of the complement color.



8828873



13870244



9157034

# Square

The Square scheme is like the rectangle color scheme, but the four colors are evenly spaced on the color wheel.



13870244



11580048



8567227



11316687

# Rectangle

The Rectangle color scheme consists of four colors that form a rectangle on the color wheel.



13870244



13020048



8567227



9483471



# Sweetspot

The Sweet Spot groups the original color and five complimentary colors.



13870244



16772589



13870291



8418677



0



8421504



# Same Dimension

The Same Dimension uses a secret algorithm to generate beautiful new colors.



13870244



16759482



13876132



6905438



11010048



2686976



# Inverse Universe

The Inverse Universe completely reimagines the original color for something new.



10802131



12255231



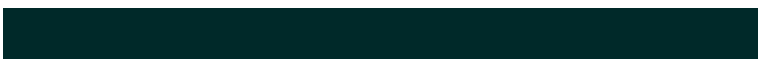
10795987



6187369



43176

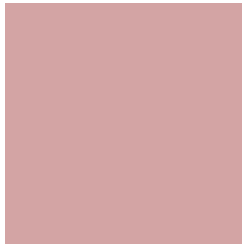


10537



# Previews

## White Background



This preview shows how the Decimal color 13870244 looks on a white background.

## Color Contrast Check

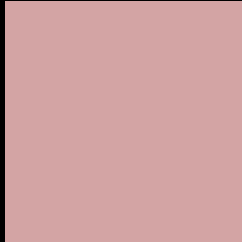
Large Text (above 18pt) WCAG AA × Fail

Any Text WCAG AA × Fail

Large Text (above 18pt) WCAG AAA × Fail

Any Text WCAG AAA × Fail

# Black Background



This preview shows how the Decimal color 13870244 looks on a black background.

## Color Contrast Check

Large Text (above 18pt) WCAG AA ✓ Pass

Any Text WCAG AA ✓ Pass

Large Text (above 18pt) WCAG AAA ✓ Pass

Any Text WCAG AAA ✓ Pass

If you want to check with other color combinations, try the [Color Contrast Checker](#).



## Decimal 13870244 Background



This preview shows how black text looks on a background with the Decimal color 13870244.



This preview shows how white text looks on a background with the Decimal color 13870244.

# Color Blindness Simulation

Color vision deficiency is a very complex topic, and I could not describe the different causes any better than Wikipedia does, so if you want to learn more, you should check out their [article about color blindness](#).


## Dichromacy



**Original Color**  
13870244

**Protanopia**  
11841450

**Deuteranopia**  
12954275



**Tritanopia**  
13935279

# Trichromacy



**Original Color**  
13870244

**Protanomaly**  
12561320

**Deuteranomaly**  
13281443

**Tritanomaly**  
13935531

# Monochromacy



**Original Color**  
13870244

**Achromatopsia**  
11711154

**Achromatomaly**  
12496301

# CSS Examples

## Text

The CSS property to change the color of the text to Decimal 13870244 is called "color". The color property can be set on classes, ids or directly on the HTML element.

This example shows how text in the color #D3A4A4 looks like.

```
.text, #text, p{  
    color:#D3A4A4  
}
```

If you want to add a text shadow in that color use the text-shadow property, you can generate a text shadow directly with our [CSS Text Shadow Generator](#).

Here you see how black text with a 4 pixel #D3A4A4 colored shadow looks like.

```
.shadow{ text-shadow: 4px 4px 2px #D3A4A4
}
```

## Border

The CSS property to change the border of an element to Decimal 13870244 is called "border". The border property can be set on classes, ids or directly on the HTML element.

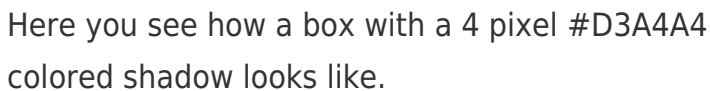
This example shows the color as border, it can be applied via the CSS property "border" or "border-color".

```
.border, #border, table{ border:4px solid
#D3A4A4 }
```

If only the border color should be changed use the property `border-color`.

```
.border{ border-color:#D3A4A4 }
```

If you want to add a box shadow in that color use:



Here you see how a box with a 4 pixel #D3A4A4 colored shadow looks like.

```
.boxshadow{ -moz-box-shadow:4px 4px 4px  
4px #D3A4A4; -webkit-box-shadow:4px 4px  
4px 4px #D3A4A4; box-shadow:4px 4px 4px  
4px #D3A4A4 }
```

# Background

The CSS property to change the background color of an element to Decimal 13870244 is called "background". The background property can be set on classes, ids or directly on the HTML element.

```
.background, #background, body{  
background:#D3A4A4 }
```

If only the background color should be changed can be used:

```
.background{ background-color:#D3A4A4 }
```

This example shows the color as background, it is applied via the CSS property "background".

To optimize and compress your CSS code, you can use our [online CSS compressor and optimizer](#) based on csstidy. If you want to create a linear or radial gradient as background or border, check our [CSS Gradient Generator](#).



Hey! You found this booklet interesting? Support Converting Colors with the new Membership Option!

The pro membership hides all ads, plus gives you double the colors in the color bucket, and more awesome pro features!

**[Learn more, Memberships starting at \\$2.50/m!](#)**

**Follow me  
on Twitter!**

@ConvertingColor