

Converting Colors

Decimal(13870758)

Have a look what the booklet for
Decimal(13870758) contains.

Decimal(13870758)	3
<i>Conversions</i>	4
<i>Details</i>	6
<i>Harmonies</i>	11
<i>Previews</i>	23
<i>Color Blindness Simulation</i>	26
<i>CSS Examples</i>	29

Color

Decimal(13870758)

Conversions

Conversions Part 1

Format	Color
Hex	D3A6A6
RGB	211, 166, 166
RGB Percent	83%, 65%, 65%
CMY	0.1725, 0.3490, 0.3490
CMYK	0.00, 0.21, 0.21, 0.17
HSL	0°, 34%, 74%
HSV	0°, 21%, 83%
XYZ	47.3831, 43.8745, 42.0477
YIQ	179.4550, 26.8200, 9.5400

Conversions

Conversions Part 2

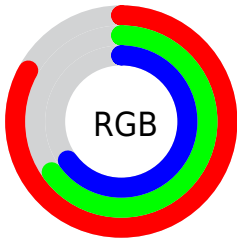
Format	Color
R _Y B	211, 166, 166
Decimal	13870758
CIE Lab	72.14, 16.53, 6.33
CIE LCh	72, 17.697, 20.959
Yxy	43.8745, 0.3554, 0.3291
Android (android.graphics.Color)	4292060838 (0xFFD3A6A6)
YUV	179.4550, -6.6333, 27.6650
Hunter-Lab	66.2378, 11.7735, 8.7293

Details

The Decimal color **13870758** is a light color, and the websafe version is hex **CC9999**. A complement of this color would be **10933203**, and the grayscale version is **11842740**.

A 20% lighter version of the original color is **16768477**, and **10252914** is the 20% darker color. If you saturate the color by 10%, you get **13865361**, and if you desaturate by 10%, it is **13876155**.

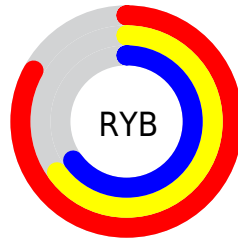
Distribution



Red (83%)

Green (65%)

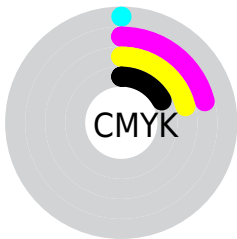
Blue (65%)



Red (83%)

Yellow (65%)

Blue (65%)

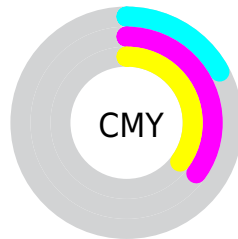


Cyan (0%)

Magenta (21%)

Yellow (21%)

Black (17%)



Cyan (17%)

Magenta (35%)

Yellow (35%)

Brightness & Saturation Gradients

These gradients show how the Decimal color 13870758 changes by changing the brightness by 10 percent. The first figure shows a shift by +10% for each color and the second figure -10%.

Similar to the brightness gradients but the following saturation gradients show a change of the Decimal color 13870758 by changing the saturation by 10% instead.

 13870758

 13870758


16777215


 12029068

 16768477

 10252914

 16775930

 8477018

 6767170

 5122860

 3544600

 2293760

 0

 13870758

 13870758

 13865361

 13876155

 13859964

 13881552

 13854567

 13886949

 13849170

 13892346

 13843773

 13893631

 13838119

 13832722

 13828096

Harmonies

Analogous

The Analogous color harmony consists of three colors that are next to each other on the color wheel.



13608630



13870758



13543832

Triad

The Triadic color harmony groups three colors that are evenly spaced from another and form a triangle on the color wheel.



13870758



10467484



10073296

Complementary

The Complementary color scheme is a pair of colors which are on the opposite of each other on the color wheel.



13870758



10933203

Split Complementary

Split-complementary colors differ from the complementary color scheme. The scheme consists of three colors, the original color and two neighbors of the complement color.



9091273



13870758



9419435

Square

The Square scheme is like the rectangle color scheme, but the four colors are evenly spaced on the color wheel.



13870758



11645843



8829628



11448015

Rectangle

The Rectangle color scheme consists of four colors that form a rectangle on the color wheel.



13870758



13085843



8829628



9680335

Sweetspot

The Sweet Spot groups the original color and five complimentary colors.



13870758



16773360



13870803



8419191



0



8421504

Same Dimension

The Same Dimension uses a secret algorithm to generate beautiful new colors.



13870758



16760253



13876646



6905438



11010048



2686976

Inverse Universe

The Inverse Universe completely reimagines the original color for something new.



10933203



12451839



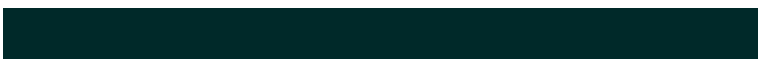
10927571



6187369



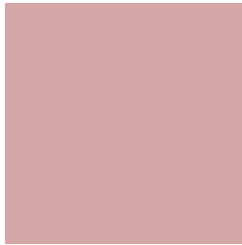
43176



10537

Previews

White Background



This preview shows how the Decimal color 13870758 looks on a white background.

Color Contrast Check

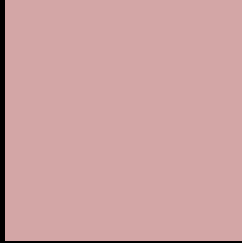
Large Text (above 18pt) WCAG AA × Fail

Any Text WCAG AA × Fail

Large Text (above 18pt) WCAG AAA × Fail

Any Text WCAG AAA × Fail

Black Background



This preview shows how the Decimal color 13870758 looks on a black background.

Color Contrast Check

Large Text (above 18pt) WCAG AA ✓ Pass

Any Text WCAG AA ✓ Pass

Large Text (above 18pt) WCAG AAA ✓ Pass

Any Text WCAG AAA ✓ Pass

If you want to check with other color combinations, try the [Color Contrast Checker](#).

Decimal 13870758 Background



This preview shows how black text looks on a background with the Decimal color 13870758.



This preview shows how white text looks on a background with the Decimal color 13870758.

Color Blindness Simulation

Color vision deficiency is a very complex topic, and I could not describe the different causes any better than Wikipedia does, so if you want to learn more, you should check out their [article about color blindness](#).


Dichromacy



Original Color
13870758

Protanopia
11972780

Deuteranopia
13085605



Tritanopia
13935793

Trichromacy



Original Color

13870758

Protanomaly

12692650

Deuteranomaly

13347237

Tritanomaly

13936045

Monochromacy



Original Color

13870758

Achromatopsia

11776947

Achromatomaly

12562094

CSS Examples

Text

The CSS property to change the color of the text to Decimal 13870758 is called "color". The color property can be set on classes, ids or directly on the HTML element.

This example shows how text in the color #D3A6A6 looks like.

```
.text, #text, p{  
  color:#D3A6A6  
}
```

If you want to add a text shadow in that color use the text-shadow property, you can generate a text shadow directly with our [CSS Text Shadow Generator](#).

Here you see how black text with a 4 pixel #D3A6A6 colored shadow looks like.

```
.shadow{ text-shadow: 4px 4px 2px #D3A6A6
}
```

Border

The CSS property to change the border of an element to Decimal 13870758 is called "border". The border property can be set on classes, ids or directly on the HTML element.

This example shows the color as border, it can be applied via the CSS property "border" or "border-color".

```
.border, #border, table{ border:4px solid
#D3A6A6 }
```

If only the border color should be changed use the property `border-color`.

```
.border{ border-color:#D3A6A6 }
```

If you want to add a box shadow in that color use:

Here you see how a box with a 4 pixel #D3A6A6 colored shadow looks like.

```
.boxshadow{ -moz-box-shadow:4px 4px 4px  
4px #D3A6A6; -webkit-box-shadow:4px 4px  
4px 4px #D3A6A6; box-shadow:4px 4px 4px  
4px #D3A6A6 }
```

Background

The CSS property to change the background color of an element to Decimal 13870758 is called "background". The background property can be set on classes, ids or directly on the HTML element.

```
.background, #background, body{  
background:#D3A6A6 }
```

If only the background color should be changed can be used:

```
.background{ background-color:#D3A6A6 }
```

This example shows the color as background, it is applied via the CSS property "background".

To optimize and compress your CSS code, you can use our [online CSS compressor and optimizer](#) based on csstidy. If you want to create a linear or radial gradient as background or border, check our [CSS Gradient Generator](#).

Hey! You found this booklet interesting? Support Converting Colors with the new Membership Option!

The pro membership hides all ads, plus gives you double the colors in the color bucket, and more awesome pro features!

[Learn more, Memberships starting at \\$2.50/m!](#)

**Follow me
on Twitter!**

@ConvertingColor