

# Converting Colors

Decimal(13871253)

Have a look what the booklet for  
Decimal(13871253) contains.

<b>Decimal(13871253)</b> .....	3
<i><b>Conversions</b></i> .....	4
<i><b>Details</b></i> .....	6
<i><b>Harmonies</b></i> .....	11
<i><b>Previews</b></i> .....	23
<i><b>Color Blindness Simulation</b></i> .....	26
<i><b>CSS Examples</b></i> .....	29

# **Color**

**Decimal(13871253)**

# Conversions

## Conversions Part 1

Format	Color
Hex	D3A895
RGB	211, 168, 149
RGB Percent	83%, 66%, 58%
CMY	0.1725, 0.3412, 0.4157
CMYK	0.00, 0.20, 0.29, 0.17
HSL	18°, 41%, 71%
HSV	18°, 29%, 83%
XYZ	46.2914, 44.0241, 34.4914
YIQ	178.6910, 31.7270, 3.2070

# Conversions

## Conversions Part 2

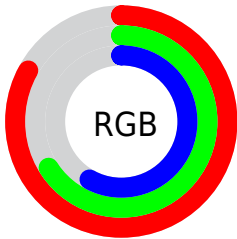
Format	Color
R <sub>Y</sub> B	211, 176, 149
Decimal	13871253
CIE Lab	72.24, 13.03, 15.81
CIE LCh	72, 20.484, 50.512
Yxy	44.0241, 0.3709, 0.3527
Android (android.graphics.Color)	4292061333 (0xFFD3A895)
YUV	178.6910, -14.6377, 28.3350
Hunter-Lab	66.3506, 8.4220, 15.6244

# Details

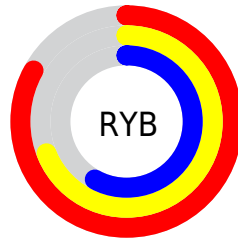
The Decimal color **13871253** is a light color, and the websafe version is hex **CC9999**. A complement of this color would be **9814227**, and the grayscale version is **11776947**.

A 20% lighter version of the original color is **16768971**, and **10187874** is the 20% darker color. If you saturate the color by 10%, you get **13867392**, and if you desaturate by 10%, it is **13875114**.

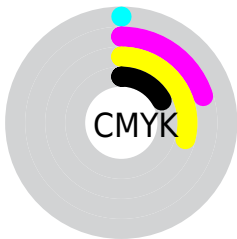
# Distribution



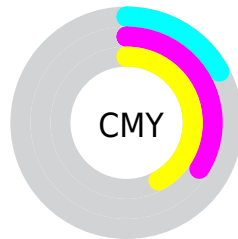
- Red (83%)
- Green (66%)
- Blue (58%)



- Red (83%)
- Yellow (69%)
- Blue (58%)



- Cyan (0%)
- Magenta (20%)
- Yellow (29%)
- Black (17%)



- Cyan (17%)
- Magenta (34%)
- Yellow (42%)

# Brightness & Saturation Gradients

These gradients show how the Decimal color 13871253 changes by changing the brightness by 10 percent. The first figure shows a shift by +10% for each color and the second figure -10%.

Similar to the brightness gradients but the following saturation gradients show a change of the Decimal color 13871253 by changing the saturation by 10% instead.



 13871253

 13871253

16777215

 12029563

 16768971

 10187874

 16776423

 8477514

 6767668

 5057822

 3545095

 2097152

 0

 13871253

 13871253

 13867392

 13875114

 13863787

 13878719

 13859926

 13882580

 13856065

 13886441

 13852460

 13890047

 13848598

 13893631

 13844993

 13844736

# Harmonies

## Analogous

The Analogous color harmony consists of three colors that are next to each other on the color wheel.



14197925



13871253



12955277

# Triad

The Triadic color harmony groups three colors that are evenly spaced from another and form a triangle on the color wheel.



13871253



9026730



11382484

# Complementary

The Complementary color scheme is a pair of colors which are on the opposite of each other on the color wheel.



13871253



9814227

# Split Complementary

Split-complementary colors differ from the complementary color scheme. The scheme consists of three colors, the original color and two neighbors of the complement color.



9745878



13871253



8305854

# Square

The Square scheme is like the rectangle color scheme, but the four colors are evenly spaced on the color wheel.



13871253



10271129



8567245



12888265

# Rectangle

The Rectangle color scheme consists of four colors that form a rectangle on the color wheel.



13871253



12169868



8567245



10793430

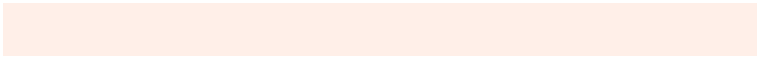


# Sweetspot

The Sweet Spot groups the original color and five complimentary colors.



13871253



16773096



13866432



8418929



0



8421504



# Same Dimension

The Same Dimension uses a secret algorithm to generate beautiful new colors.



13871253



16761254



13879189



6906206



11023360



2690304

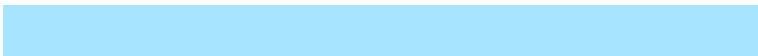


# Inverse Universe

The Inverse Universe completely reimagines the original color for something new.



9814227



10937599



9806291



6186345



30120



7209



# Previews

## White Background



This preview shows how the Decimal color 13871253 looks on a white background.

## Color Contrast Check

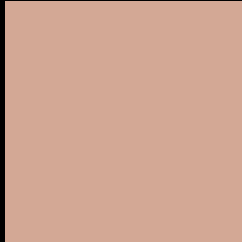
Large Text (above 18pt) WCAG AA × Fail

Any Text WCAG AA × Fail

Large Text (above 18pt) WCAG AAA × Fail

Any Text WCAG AAA × Fail

# Black Background



This preview shows how the Decimal color 13871253 looks on a black background.

## Color Contrast Check

Large Text (above 18pt) WCAG AA ✓ Pass

Any Text WCAG AA ✓ Pass

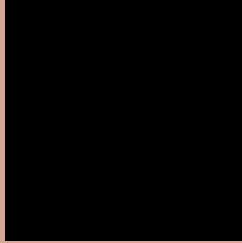
Large Text (above 18pt) WCAG AAA ✓ Pass

Any Text WCAG AAA ✓ Pass

If you want to check with other color combinations, try the [Color Contrast Checker](#).



## Decimal 13871253 Background



This preview shows how black text looks on a background with the Decimal color 13871253.



This preview shows how white text looks on a background with the Decimal color 13871253.

# Color Blindness Simulation

Color vision deficiency is a very complex topic, and I could not describe the different causes any better than Wikipedia does, so if you want to learn more, you should check out their [article about color blindness](#).


## Dichromacy



**Original Color**  
13871253

**Protanopia**  
12235161

**Deuteranopia**  
13478805



**Tritanopia**  
14066865

# Trichromacy



**Original Color**  
13871253

**Protanomaly**  
12824216

**Deuteranomaly**  
13609621

**Tritanomaly**  
14001575

# Monochromacy



**Original Color**  
13871253

**Achromatopsia**  
11776947

**Achromatomaly**  
12562344

# CSS Examples

## Text

The CSS property to change the color of the text to Decimal 13871253 is called "color". The color property can be set on classes, ids or directly on the HTML element.

This example shows how text in the color #D3A895 looks like.

```
.text, #text, p{  
    color:#D3A895  
}
```

If you want to add a text shadow in that color use the text-shadow property, you can generate a text shadow directly with our [CSS Text Shadow Generator](#).

Here you see how black text with a 4 pixel #D3A895 colored shadow looks like.

```
.shadow{ text-shadow: 4px 4px 2px #D3A895
}
```

## Border

The CSS property to change the border of an element to Decimal 13871253 is called "border". The border property can be set on classes, ids or directly on the HTML element.

This example shows the color as border, it can be applied via the CSS property "border" or "border-color".

```
.border, #border, table{ border:4px solid
#D3A895 }
```

If only the border color should be changed use the property `border-color`.

```
.border{ border-color:#D3A895 }
```

If you want to add a box shadow in that color use:

Here you see how a box with a 4 pixel #D3A895 colored shadow looks like.

```
.boxshadow{ -moz-box-shadow:4px 4px 4px  
4px #D3A895; -webkit-box-shadow:4px 4px  
4px 4px #D3A895; box-shadow:4px 4px 4px  
4px #D3A895 }
```

# Background

The CSS property to change the background color of an element to Decimal 13871253 is called "background". The background property can be set on classes, ids or directly on the HTML element.

```
.background, #background, body{  
background:#D3A895 }
```

If only the background color should be changed can be used:

```
.background{ background-color:#D3A895 }
```

This example shows the color as background, it is applied via the CSS property "background".

To optimize and compress your CSS code, you can use our [online CSS compressor and optimizer](#) based on csstidy. If you want to create a linear or radial gradient as background or border, check our [CSS Gradient Generator](#).



Hey! You found this booklet interesting? Support Converting Colors with the new Membership Option!

The pro membership hides all ads, plus gives you double the colors in the color bucket, and more awesome pro features!

**[Learn more, Memberships starting at \\$2.50/m!](#)**

**Follow me  
on Twitter!**

@ConvertingColor