

Converting Colors

Decimal(13871269)

Have a look what the booklet for
Decimal(13871269) contains.

Decimal(13871269)	3
<i>Conversions</i>	4
<i>Details</i>	6
<i>Harmonies</i>	11
<i>Previews</i>	23
<i>Color Blindness Simulation</i>	26
<i>CSS Examples</i>	29

Color

Decimal(13871269)

Conversions

Conversions Part 1

Format	Color
Hex	D3A8A5
RGB	211, 168, 165
RGB Percent	83%, 66%, 65%
CMY	0.1725, 0.3412, 0.3529
CMYK	0.00, 0.20, 0.22, 0.17
HSL	4°, 34%, 74%
HSV	4°, 22%, 83%
XYZ	47.6581, 44.5708, 41.6885
YIQ	180.5150, 26.5910, 8.1830

Conversions

Conversions Part 2

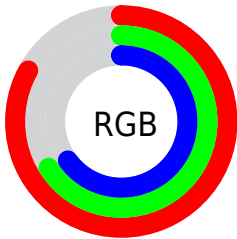
Format	Color
R _Y B	211, 168, 165
Decimal	13871269
CIE Lab	72.61, 15.29, 7.55
CIE LCh	73, 17.052, 26.263
Yxy	44.5708, 0.3559, 0.3328
Android (android.graphics.Color)	4292061349 (0xFFD3A8A5)
YUV	180.5150, -7.6489, 26.7353
Hunter-Lab	66.7613, 10.5914, 9.7099

Details

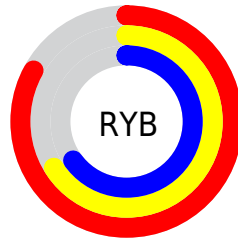
The Decimal color **13871269** is a light color, and the websafe version is hex **CC9999**. A complement of this color would be **10866899**, and the grayscale version is **11908533**.

A 20% lighter version of the original color is **16768988**, and **10253425** is the 20% darker color. If you saturate the color by 10%, you get **13866128**, and if you desaturate by 10%, it is **13876410**.

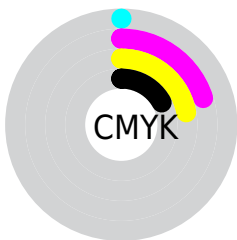
Distribution



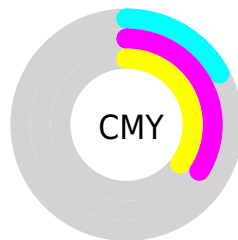
- Red (83%)
- Green (66%)
- Blue (65%)



- Red (83%)
- Yellow (66%)
- Blue (65%)



- Cyan (0%)
- Magenta (20%)
- Yellow (22%)
- Black (17%)



- Cyan (17%)
- Magenta (34%)
- Yellow (35%)

Brightness & Saturation Gradients

These gradients show how the Decimal color 13871269 changes by changing the brightness by 10 percent. The first figure shows a shift by +10% for each color and the second figure -10%.

Similar to the brightness gradients but the following saturation gradients show a change of the Decimal color 13871269 by changing the saturation by 10% instead.

 13871269

 13871269

16777215

 12029323

 16768988

 10253425

 16776440

 8477529

 6767425

 5188907

 3610647

 2293760

 0

 13871269

 13871269

 13866128

 13876410

 13861243

 13881295

 13856102

 13886436

 13850961

 13891577

 13845820

 13893631

 13840934

 13835793

 13831680

Harmonies

Analogous

The Analogous color harmony consists of three colors that are next to each other on the color wheel.



13674421



13871269



13478809

Triad

The Triadic color harmony groups three colors that are evenly spaced from another and form a triangle on the color wheel.



13871269



10402208



10400977

Complementary

The Complementary color scheme is a pair of colors which are on the opposite of each other on the color wheel.



13871269



10866899

Split Complementary

Split-complementary colors differ from the complementary color scheme. The scheme consists of three colors, the original color and two neighbors of the complement color.



9353419



13871269



9419696

Square

The Square scheme is like the rectangle color scheme, but the four colors are evenly spaced on the color wheel.



13871269



11580822



9026495



11775950

Rectangle

The Rectangle color scheme consists of four colors that form a rectangle on the color wheel.



13871269



12955540



9026495



10008272

Sweetspot

The Sweet Spot groups the original color and five complimentary colors.



13871269



16772845



13870545



8418933



0



8421504

Same Dimension

The Same Dimension uses a secret algorithm to generate beautiful new colors.



13871269



16761277



13876901



6905694



11012864



2687744

Inverse Universe

The Inverse Universe completely reimagines the original color for something new.



10866899



12450815



10861267



6187113



40360



9769

Previews

White Background



This preview shows how the Decimal color 13871269 looks on a white background.

Color Contrast Check

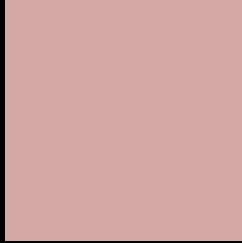
Large Text (above 18pt) WCAG AA × Fail

Any Text WCAG AA × Fail

Large Text (above 18pt) WCAG AAA × Fail

Any Text WCAG AAA × Fail

Black Background



This preview shows how the Decimal color 13871269 looks on a black background.

Color Contrast Check

Large Text (above 18pt) WCAG AA ✓ Pass

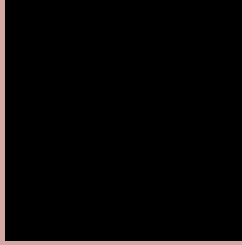
Any Text WCAG AA ✓ Pass

Large Text (above 18pt) WCAG AAA ✓ Pass

Any Text WCAG AAA ✓ Pass

If you want to check with other color combinations, try the [Color Contrast Checker](#).

Decimal 13871269 Background



This preview shows how black text looks on a background with the Decimal color 13871269.




This preview shows how white text looks on a background with the Decimal color 13871269.

Color Blindness Simulation

Color vision deficiency is a very complex topic, and I could not describe the different causes any better than Wikipedia does, so if you want to learn more, you should check out their [article about color blindness](#).

Dichromacy





Tritanopia
14001843

Trichromacy



Original Color
13871269

Protanomaly
12693160

Deuteranomaly
13478820

Tritanomaly
13936558

Monochromacy



Original Color
13871269

Achromatopsia
11908533

Achromatomaly
12628143

CSS Examples

Text

The CSS property to change the color of the text to Decimal 13871269 is called "color". The color property can be set on classes, ids or directly on the HTML element.

This example shows how text in the color #D3A8A5 looks like.

```
.text, #text, p{  
  color:#D3A8A5  
}
```

If you want to add a text shadow in that color use the text-shadow property, you can generate a text shadow directly with our [CSS Text Shadow Generator](#).

Here you see how black text with a 4 pixel #D3A8A5 colored shadow looks like.

```
.shadow{ text-shadow: 4px 4px 2px #D3A8A5
}
```

Border

The CSS property to change the border of an element to Decimal 13871269 is called "border". The border property can be set on classes, ids or directly on the HTML element.

This example shows the color as border, it can be applied via the CSS property "border" or "border-color".

```
.border, #border, table{ border:4px solid
#D3A8A5 }
```

If only the border color should be changed use the property `border-color`.

```
.border{ border-color:#D3A8A5 }
```

If you want to add a box shadow in that color use:

Here you see how a box with a 4 pixel #D3A8A5 colored shadow looks like.

```
.boxshadow{ -moz-box-shadow:4px 4px 4px  
4px #D3A8A5; -webkit-box-shadow:4px 4px  
4px 4px #D3A8A5; box-shadow:4px 4px 4px  
4px #D3A8A5 }
```

Background

The CSS property to change the background color of an element to Decimal 13871269 is called "background". The background property can be set on classes, ids or directly on the HTML element.

```
.background, #background, body{  
background:#D3A8A5 }
```

If only the background color should be changed can be used:

```
.background{ background-color:#D3A8A5 }
```

This example shows the color as background, it is applied via the CSS property "background".

To optimize and compress your CSS code, you can use our [online CSS compressor and optimizer](#) based on csstidy. If you want to create a linear or radial gradient as background or border, check our [CSS Gradient Generator](#).

Hey! You found this booklet interesting? Support Converting Colors with the new Membership Option!

The pro membership hides all ads, plus gives you double the colors in the color bucket, and more awesome pro features!

[Learn more, Memberships starting at \\$2.50/m!](#)

**Follow me
on Twitter!**

@ConvertingColor