

Converting Colors

Decimal(13871270)

Have a look what the booklet for
Decimal(13871270) contains.

Decimal(13871270)	3
<i>Conversions</i>	4
<i>Details</i>	6
<i>Harmonies</i>	11
<i>Previews</i>	23
<i>Color Blindness Simulation</i>	26
<i>CSS Examples</i>	29

Color

Decimal(13871270)

Conversions

Conversions Part 1

Format	Color
Hex	D3A8A6
RGB	211, 168, 166
RGB Percent	83%, 66%, 65%
CMY	0.1725, 0.3412, 0.3490
CMYK	0.00, 0.20, 0.21, 0.17
HSL	3°, 34%, 74%
HSV	3°, 21%, 83%
XYZ	47.7495, 44.6073, 42.1698
YIQ	180.6290, 26.2700, 8.4940

Conversions

Conversions Part 2

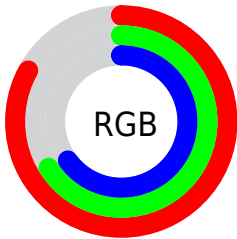
Format	Color
R _Y B	211, 168, 166
Decimal	13871270
CIE Lab	72.63, 15.44, 7.03
CIE LCh	73, 16.967, 24.480
Yxy	44.6073, 0.3549, 0.3316
Android (android.graphics.Color)	4292061350 (0xFFD3A8A6)
YUV	180.6290, -7.2121, 26.6354
Hunter-Lab	66.7887, 10.7355, 9.3169

Details

The Decimal color **13871270** is a light color, and the websafe version is hex **CC9999**. A complement of this color would be **10932691**, and the grayscale version is **11908533**.

A 20% lighter version of the original color is **16768989**, and **10253426** is the 20% darker color. If you saturate the color by 10%, you get **13866129**, and if you desaturate by 10%, it is **13876411**.

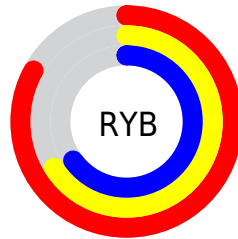
Distribution



Red (83%)

Green (66%)

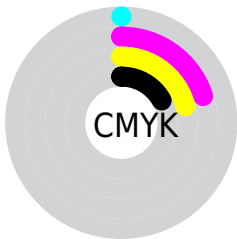
Blue (65%)



Red (83%)

Yellow (66%)

Blue (65%)

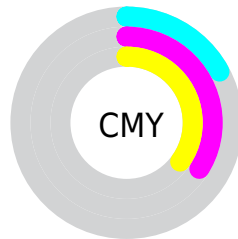


Cyan (0%)

Magenta (20%)

Yellow (21%)

Black (17%)



Cyan (17%)

Magenta (34%)

Yellow (35%)

Brightness & Saturation Gradients

These gradients show how the Decimal color 13871270 changes by changing the brightness by 10 percent. The first figure shows a shift by +10% for each color and the second figure -10%.

Similar to the brightness gradients but the following saturation gradients show a change of the Decimal color 13871270 by changing the saturation by 10% instead.

 13871270

 13871270

16777215


 12029324

 16768989

 10253426

 16776442

 8477530

 6767426

 5188908

 3610648

 2293760

 0

 13871270

 13871270

 13866129

 13876411

 13860988

 13881552

 13855847

 13886693

 13850450

 13892090

 13845309

 13893631

 13840167

 13835026

 13830400

Harmonies

Analogous

The Analogous color harmony consists of three colors that are next to each other on the color wheel.



13674678



13871270



13544346

Triad

The Triadic color harmony groups three colors that are evenly spaced from another and form a triangle on the color wheel.



13871270



10467744



10335441

Complementary

The Complementary color scheme is a pair of colors which are on the opposite of each other on the color wheel.



13871270



10932691

Split Complementary

Split-complementary colors differ from the complementary color scheme. The scheme consists of three colors, the original color and two neighbors of the complement color.



9353675



13871270



9485231

Square

The Square scheme is like the rectangle color scheme, but the four colors are evenly spaced on the color wheel.



13871270



11646358



9026494



11644878

Rectangle

The Rectangle color scheme consists of four colors that form a rectangle on the color wheel.



13871270



13020821



9026494



9942736

Sweetspot

The Sweet Spot groups the original color and five complimentary colors.



13871270



16773360



13870802



8419191



0



8421504

Same Dimension

The Same Dimension uses a secret algorithm to generate beautiful new colors.



13871270



16761021



13876902



6905694



11011840



2687488

Inverse Universe

The Inverse Universe completely reimagines the original color for something new.



10932691



12451071



10927059



6187113



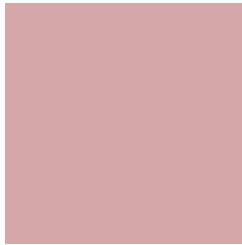
41384



10025

Previews

White Background



This preview shows how the Decimal color 13871270 looks on a white background.

Color Contrast Check

Large Text (above 18pt) WCAG AA × Fail

Any Text WCAG AA × Fail

Large Text (above 18pt) WCAG AAA × Fail

Any Text WCAG AAA × Fail

Black Background



This preview shows how the Decimal color 13871270 looks on a black background.

Color Contrast Check

Large Text (above 18pt) WCAG AA ✓ Pass

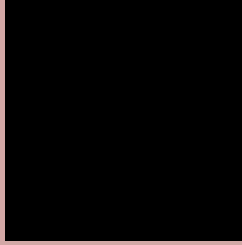
Any Text WCAG AA ✓ Pass

Large Text (above 18pt) WCAG AAA ✓ Pass

Any Text WCAG AAA ✓ Pass

If you want to check with other color combinations, try the [Color Contrast Checker](#).

Decimal 13871270 Background



This preview shows how black text looks on a background with the Decimal color 13871270.




This preview shows how white text looks on a background with the Decimal color 13871270.

Color Blindness Simulation

Color vision deficiency is a very complex topic, and I could not describe the different causes any better than Wikipedia does, so if you want to learn more, you should check out their [article about color blindness](#).

Dichromacy





Tritanopia
14001843

Trichromacy



Original Color
13871270

Protanomaly
12693161

Deuteranomaly
13478821

Tritanomaly
13936558

Monochromacy



Original Color
13871270

Achromatopsia
11908533

Achromatomaly
12628144

CSS Examples

Text

The CSS property to change the color of the text to Decimal 13871270 is called "color". The color property can be set on classes, ids or directly on the HTML element.

This example shows how text in the color #D3A8A6 looks like.

```
.text, #text, p{  
  color:#D3A8A6  
}
```

If you want to add a text shadow in that color use the text-shadow property, you can generate a text shadow directly with our [CSS Text Shadow Generator](#).

Here you see how black text with a 4 pixel #D3A8A6 colored shadow looks like.

```
.shadow{ text-shadow: 4px 4px 2px #D3A8A6
}
```

Border

The CSS property to change the border of an element to Decimal 13871270 is called "border". The border property can be set on classes, ids or directly on the HTML element.

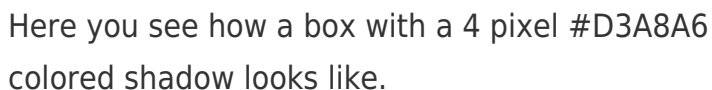
This example shows the color as border, it can be applied via the CSS property "border" or "border-color".

```
.border, #border, table{ border:4px solid
#D3A8A6 }
```

If only the border color should be changed use the property `border-color`.

```
.border{ border-color:#D3A8A6 }
```

If you want to add a box shadow in that color use:



Here you see how a box with a 4 pixel #D3A8A6 colored shadow looks like.

```
.boxshadow{ -moz-box-shadow:4px 4px 4px  
4px #D3A8A6; -webkit-box-shadow:4px 4px  
4px 4px #D3A8A6; box-shadow:4px 4px 4px  
4px #D3A8A6 }
```

Background

The CSS property to change the background color of an element to Decimal 13871270 is called "background". The background property can be set on classes, ids or directly on the HTML element.

```
.background, #background, body{  
background:#D3A8A6 }
```

If only the background color should be changed can be used:

```
.background{ background-color:#D3A8A6 }
```

This example shows the color as background, it is applied via the CSS property "background".

To optimize and compress your CSS code, you can use our [online CSS compressor and optimizer](#) based on csstidy. If you want to create a linear or radial gradient as background or border, check our [CSS Gradient Generator](#).

Hey! You found this booklet interesting? Support Converting Colors with the new Membership Option!

The pro membership hides all ads, plus gives you double the colors in the color bucket, and more awesome pro features!

[Learn more, Memberships starting at \\$2.50/m!](#)

**Follow me
on Twitter!**

@ConvertingColor