

Converting Colors

Decimal(13871780)

Have a look what the booklet for
Decimal(13871780) contains.

Decimal(13871780)	3
<i>Conversions</i>	4
<i>Details</i>	6
<i>Harmonies</i>	11
<i>Previews</i>	23
<i>Color Blindness Simulation</i>	26
<i>CSS Examples</i>	29

Color

Decimal(13871780)

Conversions

Conversions Part 1

Format	Color
Hex	D3AAA4
RGB	211, 170, 164
RGB Percent	83%, 67%, 64%
CMY	0.1725, 0.3333, 0.3569
CMYK	0.00, 0.19, 0.22, 0.17
HSL	8°, 35%, 74%
HSV	8°, 22%, 83%
XYZ	47.9395, 45.2787, 41.3349
YIQ	181.5750, 26.3620, 6.8260

Conversions

Conversions Part 2

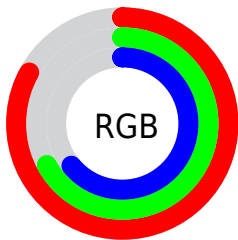
Format	Color
RYB	211, 171, 164
Decimal	13871780
CIELab	73.08, 14.06, 8.76
CIELCh	73, 16.567, 31.929
Yxy	45.2787, 0.3563, 0.3365
Android (android.graphics.Color)	4292061860 (0xFFD3AAA4)
YUV	181.5750, -8.6645, 25.8057
Hunter-Lab	67.2894, 9.4137, 10.6816

Details

The Decimal color **13871780** is a light color, and the websafe version is hex **CC9999**. A complement of this color would be **10800595**, and the grayscale version is **11974326**.

A 20% lighter version of the original color is **16769499**, and **10253936** is the 20% darker color. If you saturate the color by 10%, you get **13867151**, and if you desaturate by 10%, it is **13876409**.

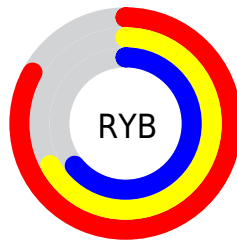
Distribution



Red (83%)

Green (67%)

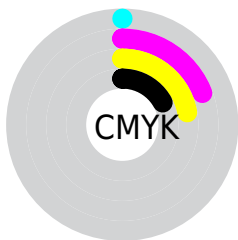
Blue (64%)



Red (83%)

Yellow (67%)

Blue (64%)

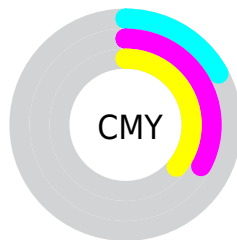


Cyan (0%)

Magenta (19%)

Yellow (22%)

Black (17%)



Cyan (17%)

Magenta (33%)

Yellow (36%)

Brightness & Saturation Gradients

These gradients show how the Decimal color 13871780 changes by changing the brightness by 10 percent. The first figure shows a shift by +10% for each color and the second figure -10%.

Similar to the brightness gradients but the following saturation gradients show a change of the Decimal color 13871780 by changing the saturation by 10% instead.

 13871780

 13871780

16777215

 12029834

 16769499

 10253936

 16776951

 8478040

 6767937

 5189419

 3610902

 2228224

 0

 13871780

 13871780

 13867151

 13876409

 13862266

 13881294

 13857637

 13885923

 13852752

 13890808

 13848123

 13893631

 13843493

 13838608

 13835008

Harmonies

Analogous

The Analogous color harmony consists of three colors that are next to each other on the color wheel.



13806003



13871780



13414041

Triad

The Triadic color harmony groups three colors that are evenly spaced from another and form a triangle on the color wheel.



13871780



10337189



10794193

Complementary

The Complementary color scheme is a pair of colors which are on the opposite of each other on the color wheel.



13871780



10800595

Split Complementary

Split-complementary colors differ from the complementary color scheme. The scheme consists of three colors, the original color and two neighbors of the complement color.



9681358



13871780



9485492

Square

The Square scheme is like the rectangle color scheme, but the four colors are evenly spaced on the color wheel.



13871780



11450265



9223363



12103629

Rectangle

The Rectangle color scheme consists of four colors that form a rectangle on the color wheel.



13871780



12890518



9223363



10401489

Sweetspot

The Sweet Spot groups the original color and five complimentary colors.



13871780



16773101



13870286



8419189



0



8421504

Same Dimension

The Same Dimension uses a secret algorithm to generate beautiful new colors.



13871780



16761786



13877668



6905694



11015424



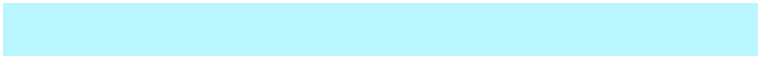
2688256

Inverse Universe

The Inverse Universe completely reimagines the original color for something new.



10800595



12252927



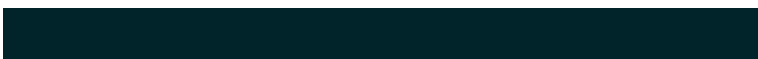
10794707



6186857



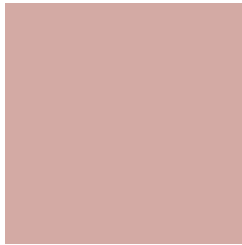
37800



9257

Previews

White Background



This preview shows how the Decimal color 13871780 looks on a white background.

Color Contrast Check

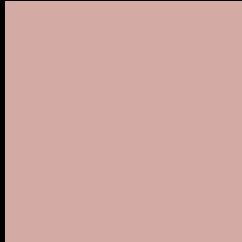
Large Text (above 18pt) WCAG AA × Fail

Any Text WCAG AA × Fail

Large Text (above 18pt) WCAG AAA × Fail

Any Text WCAG AAA × Fail

Black Background



This preview shows how the Decimal color 13871780 looks on a black background.

Color Contrast Check

Large Text (above 18pt) WCAG AA ✓ Pass

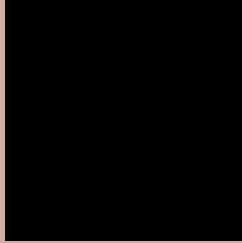
Any Text WCAG AA ✓ Pass

Large Text (above 18pt) WCAG AAA ✓ Pass

Any Text WCAG AAA ✓ Pass

If you want to check with other color combinations, try the [Color Contrast Checker](#).

Decimal 13871780 Background



This preview shows how black text looks on a background with the Decimal color 13871780.



This preview shows how white text looks on a background with the Decimal color 13871780.

Color Blindness Simulation

Color vision deficiency is a very complex topic, and I could not describe the different causes any better than Wikipedia does, so if you want to learn more, you should check out their [article about color blindness](#).

Dichromacy



Original Color
13871780

Protanopia
12170153

Deuteranopia
13348259



Tritanopia
14002100

Trichromacy



Original Color
13871780

Protanomaly
12759207

Deuteranomaly
13544611

Tritanomaly
13936814

Monochromacy



Original Color
13871780

Achromatopsia
11974326

Achromatomaly
12694191

CSS Examples

Text

The CSS property to change the color of the text to Decimal 13871780 is called "color". The color property can be set on classes, ids or directly on the HTML element.

This example shows how text in the color #D3AAA4 looks like.

```
.text, #text, p{  
  color:#D3AAA4  
}
```

If you want to add a text shadow in that color use the text-shadow property, you can generate a text shadow directly with our [CSS Text Shadow Generator](#).

Here you see how black text with a 4 pixel #D3AAA4 colored shadow looks like.

```
.shadow{ text-shadow: 4px 4px 2px #D3AAA4
}
```

Border

The CSS property to change the border of an element to Decimal 13871780 is called "border". The border property can be set on classes, ids or directly on the HTML element.

This example shows the color as border, it can be applied via the CSS property "border" or "border-color".

```
.border, #border, table{ border:4px solid
#D3AAA4 }
```

If only the border color should be changed use the property `border-color`.

```
.border{ border-color:#D3AAA4 }
```

If you want to add a box shadow in that color use:

Here you see how a box with a 4 pixel #D3AAA4 colored shadow looks like.

```
.boxshadow{ -moz-box-shadow:4px 4px 4px  
4px #D3AAA4; -webkit-box-shadow:4px 4px  
4px 4px #D3AAA4; box-shadow:4px 4px 4px  
4px #D3AAA4 }
```

Background

The CSS property to change the background color of an element to Decimal 13871780 is called "background". The background property can be set on classes, ids or directly on the HTML element.

```
.background, #background, body{  
background:#D3AAA4 }
```

If only the background color should be changed can be used:

```
.background{ background-color:#D3AAA4 }
```

This example shows the color as background, it is applied via the CSS property "background".

To optimize and compress your CSS code, you can use our [online CSS compressor and optimizer](#) based on csstidy. If you want to create a linear or radial gradient as background or border, check our [CSS Gradient Generator](#).

Hey! You found this booklet interesting? Support Converting Colors with the new Membership Option!

The pro membership hides all ads, plus gives you double the colors in the color bucket, and more awesome pro features!

[Learn more, Memberships starting at \\$2.50/m!](#)

**Follow me
on Twitter!**

@ConvertingColor