

Converting Colors

Decimal(13872530)

Have a look what the booklet for
Decimal(13872530) contains.

| | |
|--|----|
| Decimal(13872530) | 3 |
| <i>Conversions</i> | 4 |
| <i>Details</i> | 6 |
| <i>Harmonies</i> | 11 |
| <i>Previews</i> | 23 |
| <i>Color Blindness Simulation</i> | 26 |
| <i>CSS Examples</i> | 29 |

Color

Decimal(13872530)

Conversions

Conversions Part 1

| Format | Color |
|---------------|----------------------------|
| Hex | D3AD92 |
| RGB | 211, 173, 146 |
| RGB Percent | 83%, 68%, 57% |
| CMY | 0.1725, 0.3216, 0.4275 |
| CMYK | 0.00, 0.18, 0.31, 0.17 |
| HSL | 25°, 42%, 70% |
| HSV | 25°, 31%, 83% |
| XYZ | 46.9958, 45.8113, 33.5597 |
| YIQ | 181.2840, 31.3150, -0.3410 |

Conversions

Conversions Part 2

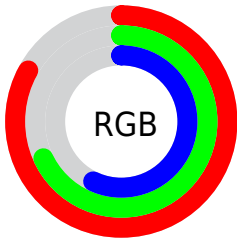
| Format | Color |
|-------------------------------------|--------------------------------|
| R_{YB} | 211, 192, 146 |
| Decimal | 13872530 |
| CIE _{Lab} | 73.42, 9.93, 19.08 |
| CIE _{LCh} | 73, 21.510, 62.500 |
| Yxy | 45.8113, 0.3719, 0.3625 |
| Android (android.graphics.Color) | 4292062610 (0xFFD3AD92) |
| YUV | 181.2840, -17.3950, 26.0609 |
| Hunter-Lab | 67.6841, 5.4928, 17.9812 |

Details

The Decimal color **13872530** is a light color, and the websafe version is hex **CC9999**. A complement of this color would be **9615571**, and the grayscale version is **11908533**.

A 20% lighter version of the original color is **16770248**, and **10189151** is the 20% darker color. If you saturate the color by 10%, you get **13869437**, and if you desaturate by 10%, it is **13875623**.

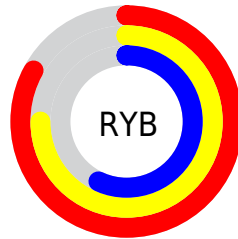
Distribution



Red (83%)

Green (68%)

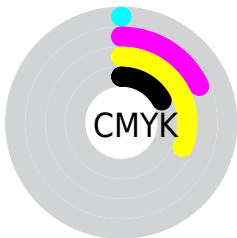
Blue (57%)



Red (83%)

Yellow (75%)

Blue (57%)

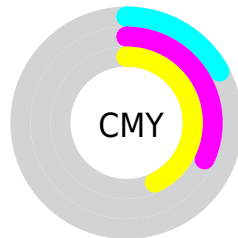


Cyan (0%)

Magenta (18%)

Yellow (31%)

Black (17%)



Cyan (17%)

Magenta (32%)

Yellow (43%)

Brightness & Saturation Gradients

These gradients show how the Decimal color 13872530 changes by changing the brightness by 10 percent. The first figure shows a shift by +10% for each color and the second figure -10%.

Similar to the brightness gradients but the following saturation gradients show a change of the Decimal color 13872530 by changing the saturation by 10% instead.

 13872530

 13872530

16777215

 12030584

 16770248

 10189151

 16777188

 8478792

 6768689

 5059099

 3546114

 2032640

 0

 13872530

 13872530

13869437

13875623

13866088

13878972

13862995

13882065

13859902

13885158

13856552

13888507

13853459

13891583

13850624

13893631

Harmonies

Analogous

The Analogous color harmony consists of three colors that are next to each other on the color wheel.



14461088



13872530



12760205

Triad

The Triadic color harmony groups three colors that are evenly spaced from another and form a triangle on the color wheel.



13872530



8700085



12234710

Complementary

The Complementary color scheme is a pair of colors which are on the opposite of each other on the color wheel.



13872530



9615571

Split Complementary

Split-complementary colors differ from the complementary color scheme. The scheme consists of three colors, the original color and two neighbors of the complement color.



10532571



13872530



8306633

Square

The Square scheme is like the rectangle color scheme, but the four colors are evenly spaced on the color wheel.



13872530



9879202



8960983



13609415

Rectangle

The Rectangle color scheme consists of four colors that form a rectangle on the color wheel.



13872530



11843728



8960983



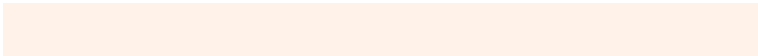
11645401

Sweetspot

The Sweet Spot groups the original color and five complimentary colors.



13872530



16773864



13865657



8419185



0



8421504

Same Dimension

The Same Dimension uses a secret algorithm to generate beautiful new colors.



13872530



16763041



13880466



6906462



11027968



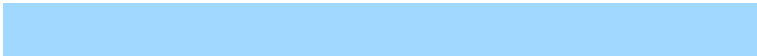
2691328

Inverse Universe

The Inverse Universe completely reimagines the original color for something new.



9615571



10606847



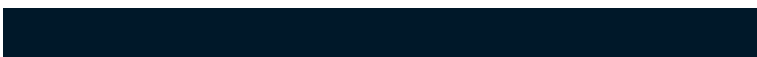
9607379



6186089



25256



6185

Previews

White Background



This preview shows how the Decimal color 13872530 looks on a white background.

Color Contrast Check

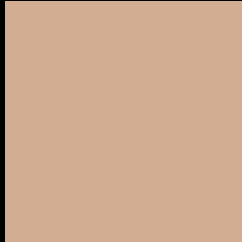
Large Text (above 18pt) WCAG AA × Fail

Any Text WCAG AA × Fail

Large Text (above 18pt) WCAG AAA × Fail

Any Text WCAG AAA × Fail

Black Background



This preview shows how the Decimal color 13872530 looks on a black background.

Color Contrast Check

Large Text (above 18pt) WCAG AA ✓ Pass

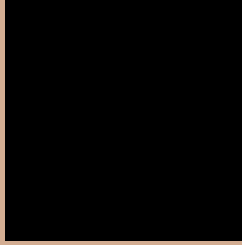
Any Text WCAG AA ✓ Pass

Large Text (above 18pt) WCAG AAA ✓ Pass

Any Text WCAG AAA ✓ Pass

If you want to check with other color combinations, try the [Color Contrast Checker](#).

Decimal 13872530 Background



This preview shows how black text looks on a background with the Decimal color 13872530.




This preview shows how white text looks on a background with the Decimal color 13872530.

Color Blindness Simulation

Color vision deficiency is a very complex topic, and I could not describe the different causes any better than Wikipedia does, so if you want to learn more, you should check out their [article about color blindness](#).

Dichromacy





Tritanopia
14133429

Trichromacy



Original Color
13872530

Protanomaly
13021588

Deuteranomaly
13806994

Tritanomaly
14068392

Monochromacy



Original Color
13872530

Achromatopsia
11908533

Achromatomaly
12628648

CSS Examples

Text

The CSS property to change the color of the text to Decimal 13872530 is called "color". The color property can be set on classes, ids or directly on the HTML element.

This example shows how text in the color #D3AD92 looks like.

```
.text, #text, p{  
    color:#D3AD92  
}
```

If you want to add a text shadow in that color use the text-shadow property, you can generate a text shadow directly with our [CSS Text Shadow Generator](#).

Here you see how black text with a 4 pixel #D3AD92 colored shadow looks like.

```
.shadow{ text-shadow: 4px 4px 2px #D3AD92
}
```

Border

The CSS property to change the border of an element to Decimal 13872530 is called "border". The border property can be set on classes, ids or directly on the HTML element.

This example shows the color as border, it can be applied via the CSS property "border" or "border-color".

```
.border, #border, table{ border:4px solid
#D3AD92 }
```

If only the border color should be changed use the property `border-color`.

```
.border{ border-color:#D3AD92 }
```

If you want to add a box shadow in that color use:

Here you see how a box with a 4 pixel #D3AD92 colored shadow looks like.

```
.boxshadow{ -moz-box-shadow:4px 4px 4px  
4px #D3AD92; -webkit-box-shadow:4px 4px  
4px 4px #D3AD92; box-shadow:4px 4px 4px  
4px #D3AD92 }
```

Background

The CSS property to change the background color of an element to Decimal 13872530 is called "background". The background property can be set on classes, ids or directly on the HTML element.

```
.background, #background, body{  
background:#D3AD92 }
```

If only the background color should be changed can be used:

```
.background{ background-color:#D3AD92 }
```

This example shows the color as background, it is applied via the CSS property "background".

To optimize and compress your CSS code, you can use our [online CSS compressor and optimizer](#) based on csstidy. If you want to create a linear or radial gradient as background or border, check our [CSS Gradient Generator](#).

Hey! You found this booklet interesting? Support Converting Colors with the new Membership Option!

The pro membership hides all ads, plus gives you double the colors in the color bucket, and more awesome pro features!

[Learn more, Memberships starting at \\$2.50/m!](#)

**Follow me
on Twitter!**

@ConvertingColor