

Converting Colors

Decimal(13872786)

Have a look what the booklet for
Decimal(13872786) contains.

Decimal(13872786)	3
<i>Conversions</i>	4
<i>Details</i>	6
<i>Harmonies</i>	11
<i>Previews</i>	23
<i>Color Blindness Simulation</i>	26
<i>CSS Examples</i>	29

Color

Decimal(13872786)

Conversions

Conversions Part 1

Format	Color
Hex	D3AE92
RGB	211, 174, 146
RGB Percent	83%, 68%, 57%
CMY	0.1725, 0.3176, 0.4275
CMYK	0.00, 0.18, 0.31, 0.17
HSL	26°, 42%, 70%
HSV	26°, 31%, 83%
XYZ	47.1883, 46.1963, 33.6238
YIQ	181.8710, 31.0400, -0.8640

Conversions

Conversions Part 2

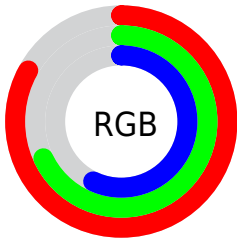
Format	Color
R _Y B	211, 195, 146
Decimal	13872786
CIE Lab	73.67, 9.39, 19.42
CIE LCh	74, 21.577, 64.189
Yxy	46.1963, 0.3715, 0.3637
Android (android.graphics.Color)	4292062866 (0xFFD3AE92)
YUV	181.8710, -17.6844, 25.5461
Hunter-Lab	67.9679, 4.9842, 18.2466

Details

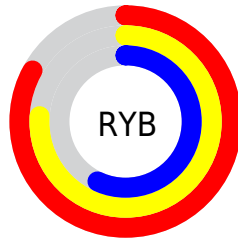
The Decimal color **13872786** is a light color, and the websafe version is hex **CC9999**. A complement of this color would be **9615315**, and the grayscale version is **11974326**.

A 20% lighter version of the original color is **16770504**, and **10189407** is the 20% darker color. If you saturate the color by 10%, you get **13869693**, and if you desaturate by 10%, it is **13875879**.

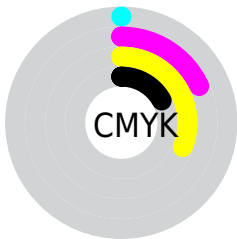
Distribution



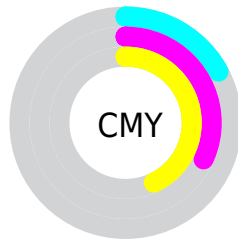
- Red (83%)
- Green (68%)
- Blue (57%)



- Red (83%)
- Yellow (76%)
- Blue (57%)



- Cyan (0%)
- Magenta (18%)
- Yellow (31%)
- Black (17%)



- Cyan (17%)
- Magenta (32%)
- Yellow (43%)

Brightness & Saturation Gradients

These gradients show how the Decimal color 13872786 changes by changing the brightness by 10 percent. The first figure shows a shift by +10% for each color and the second figure -10%.

Similar to the brightness gradients but the following saturation gradients show a change of the Decimal color 13872786 by changing the saturation by 10% instead.

 13872786

 13872786

16777215

 12030840

 16770504

 10189407

 16777188

 8479047

 6768945

 5059099

 3546370

 2032896

 0

 13872786

 13872786

 13869693

 13875879

 13866600

 13878972

 13863507

 13882065

 13860414

 13885158

 13857320

 13888251

 13854227

 13891327

 13851392

 13893631

Harmonies

Analogous

The Analogous color harmony consists of three colors that are next to each other on the color wheel.



14526880



13872786



12694926

Triad

The Triadic color harmony groups three colors that are evenly spaced from another and form a triangle on the color wheel.



13872786



8700087



12365782

Complementary

The Complementary color scheme is a pair of colors which are on the opposite of each other on the color wheel.



13872786



9615315

Split Complementary

Split-complementary colors differ from the complementary color scheme. The scheme consists of three colors, the original color and two neighbors of the complement color.



10663644



13872786



8306634

Square

The Square scheme is like the rectangle color scheme, but the four colors are evenly spaced on the color wheel.



13872786



9813923



9092312



13740487

Rectangle

The Rectangle color scheme consists of four colors that form a rectangle on the color wheel.



13872786



11778449



9092312



11776473

Sweetspot

The Sweet Spot groups the original color and five complimentary colors.



13872786



16773864



13865656



8419441



0



8421504

Same Dimension

The Same Dimension uses a secret algorithm to generate beautiful new colors.



13872786



16763297



13880978



6906718



11028480



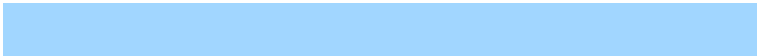
2691584

Inverse Universe

The Inverse Universe completely reimagines the original color for something new.



9615315



10606335



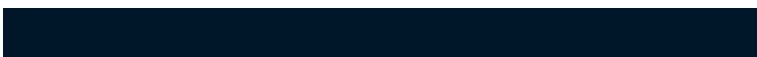
9607123



6186089



24744



5929

Previews

White Background



This preview shows how the Decimal color 13872786 looks on a white background.

Color Contrast Check

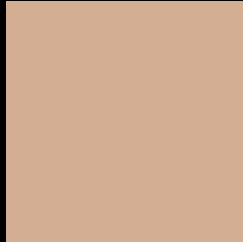
Large Text (above 18pt) WCAG AA × Fail

Any Text WCAG AA × Fail

Large Text (above 18pt) WCAG AAA × Fail

Any Text WCAG AAA × Fail

Black Background



This preview shows how the Decimal color 13872786 looks on a black background.

Color Contrast Check

Large Text (above 18pt) WCAG AA ✓ Pass

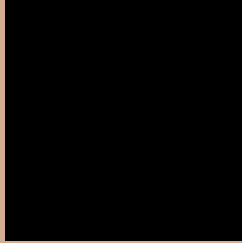
Any Text WCAG AA ✓ Pass

Large Text (above 18pt) WCAG AAA ✓ Pass

Any Text WCAG AAA ✓ Pass

If you want to check with other color combinations, try the [Color Contrast Checker](#).

Decimal 13872786 Background



This preview shows how black text looks on a background with the Decimal color 13872786.



This preview shows how white text looks on a background with the Decimal color 13872786.

Color Blindness Simulation

Color vision deficiency is a very complex topic, and I could not describe the different causes any better than Wikipedia does, so if you want to learn more, you should check out their [article about color blindness](#).


Dichromacy



Original Color
13872786

Protanopia
12629397

Deuteranopia
13872786



Tritanopia
14133686

Trichromacy



Original Color
13872786

Protanomaly
13087380

Deuteranomaly
13872786

Tritanomaly
14068649

Monochromacy



Original Color
13872786

Achromatopsia
11974326

Achromatomaly
12694441

CSS Examples

Text

The CSS property to change the color of the text to Decimal 13872786 is called "color". The color property can be set on classes, ids or directly on the HTML element.

This example shows how text in the color #D3AE92 looks like.

```
.text, #text, p{  
    color:#D3AE92  
}
```

If you want to add a text shadow in that color use the text-shadow property, you can generate a text shadow directly with our [CSS Text Shadow Generator](#).

Here you see how black text with a 4 pixel #D3AE92 colored shadow looks like.

```
.shadow{ text-shadow: 4px 4px 2px #D3AE92
}
```

Border

The CSS property to change the border of an element to Decimal 13872786 is called "border". The border property can be set on classes, ids or directly on the HTML element.

This example shows the color as border, it can be applied via the CSS property "border" or "border-color".

```
.border, #border, table{ border:4px solid
#D3AE92 }
```

If only the border color should be changed use the property `border-color`.

```
.border{ border-color:#D3AE92 }
```

If you want to add a box shadow in that color use:

Here you see how a box with a 4 pixel #D3AE92 colored shadow looks like.

```
.boxshadow{ -moz-box-shadow:4px 4px 4px  
4px #D3AE92; -webkit-box-shadow:4px 4px  
4px 4px #D3AE92; box-shadow:4px 4px 4px  
4px #D3AE92 }
```

Background

The CSS property to change the background color of an element to Decimal 13872786 is called "background". The background property can be set on classes, ids or directly on the HTML element.

```
.background, #background, body{  
background:#D3AE92 }
```

If only the background color should be changed can be used:

```
.background{ background-color:#D3AE92 }
```

This example shows the color as background, it is applied via the CSS property "background".

To optimize and compress your CSS code, you can use our [online CSS compressor and optimizer](#) based on csstidy. If you want to create a linear or radial gradient as background or border, check our [CSS Gradient Generator](#).

Hey! You found this booklet interesting? Support Converting Colors with the new Membership Option!

The pro membership hides all ads, plus gives you double the colors in the color bucket, and more awesome pro features!

[Learn more, Memberships starting at \\$2.50/m!](#)

**Follow me
on Twitter!**

@ConvertingColor