

Converting Colors

Decimal(13873069)

Have a look what the booklet for
Decimal(13873069) contains.

Decimal(13873069)	3
<i>Conversions</i>	4
<i>Details</i>	6
<i>Harmonies</i>	11
<i>Previews</i>	23
<i>Color Blindness Simulation</i>	26
<i>CSS Examples</i>	29

Color

Decimal(13873069)

Conversions

Conversions Part 1

Format	Color
Hex	D3AFAD
RGB	211, 175, 173
RGB Percent	83%, 69%, 68%
CMY	0.1725, 0.3137, 0.3216
CMYK	0.00, 0.17, 0.18, 0.17
HSL	3°, 30%, 75%
HSV	3°, 18%, 83%
XYZ	49.7368, 47.5260, 46.0872
YIQ	185.5360, 22.0980, 7.0100

Conversions

Conversions Part 2

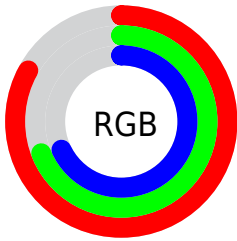
Format	Color
RYB	211, 175, 173
Decimal	13873069
CIELab	74.52, 12.72, 5.91
CIElCh	75, 14.030, 24.921
Yxy	47.5260, 0.3470, 0.3315
Android (android.graphics.Color)	4292063149 (0xFFD3AFAD)
YUV	185.5360, -6.1802, 22.3319
Hunter-Lab	68.9391, 8.1372, 8.6208

Details

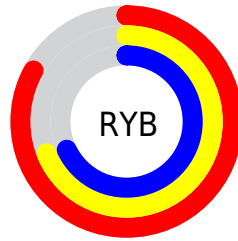
The Decimal color **13873069** is a light color, and the websafe version is hex **CC9999**. A complement of this color would be **11391443**, and the grayscale version is **12237498**.

A 20% lighter version of the original color is **16771044**, and **10254969** is the 20% darker color. If you saturate the color by 10%, you get **13867928**, and if you desaturate by 10%, it is **13878210**.

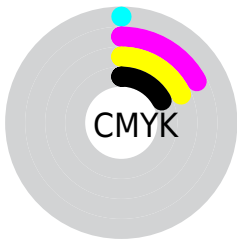
Distribution



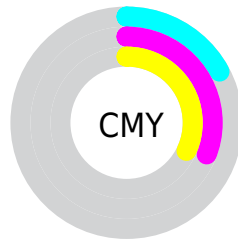
- Red (83%)
- Green (69%)
- Blue (68%)



- Red (83%)
- Yellow (69%)
- Blue (68%)



- Cyan (0%)
- Magenta (17%)
- Yellow (18%)
- Black (17%)



- Cyan (17%)
- Magenta (31%)
- Yellow (32%)

Brightness & Saturation Gradients

These gradients show how the Decimal color 13873069 changes by changing the brightness by 10 percent. The first figure shows a shift by +10% for each color and the second figure -10%.

Similar to the brightness gradients but the following saturation gradients show a change of the Decimal color 13873069 by changing the saturation by 10% instead.

 13873069

 13873069

16777215

 12031122

 16771044

 10254969

 8544864

 6834760

 5190450

 3677469

 2295299

 0

 13873069

 13873069

 13867928

 13878210

 13862787

 13883351

 13857646

 13888492

 13852505

 13893631

 13847364

 13842222

 13837081

 13831940

 13830912

Harmonies

Analogous

The Analogous color harmony consists of three colors that are next to each other on the color wheel.



13676474



13873069



13611683

Triad

The Triadic color harmony groups three colors that are evenly spaced from another and form a triangle on the color wheel.



13873069



10993064



10992081

Complementary

The Complementary color scheme is a pair of colors which are on the opposite of each other on the color wheel.



13873069



11391443

Split Complementary

Split-complementary colors differ from the complementary color scheme. The scheme consists of three colors, the original color and two neighbors of the complement color.



10141132



13873069



10207157

Square

The Square scheme is like the rectangle color scheme, but the four colors are evenly spaced on the color wheel.



13873069



11975328



9879490



12039631

Rectangle

The Rectangle color scheme consists of four colors that form a rectangle on the color wheel.



13873069



13153439



9879490



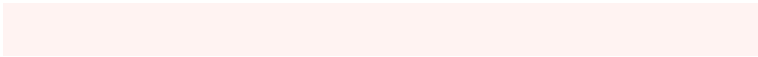
10664656

Sweetspot

The Sweet Spot groups the original color and five complimentary colors.



13873069



16774130



13872593



8419448



0



8421504

Same Dimension

The Same Dimension uses a secret algorithm to generate beautiful new colors.



13873069



16763591



13877933



6905694



11012352



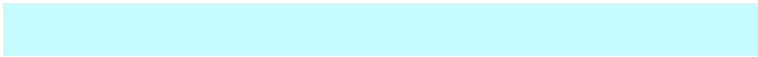
2687488

Inverse Universe

The Inverse Universe completely reimagines the original color for something new.



11391443



13106431



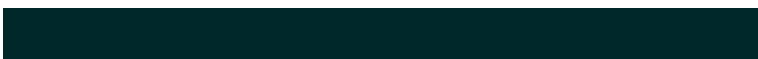
11386579



6187113



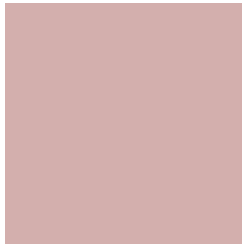
40872



10025

Previews

White Background



This preview shows how the Decimal color 13873069 looks on a white background.

Color Contrast Check

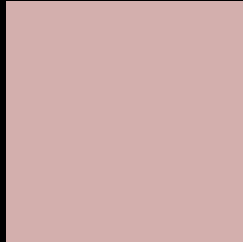
Large Text (above 18pt) WCAG AA × Fail

Any Text WCAG AA × Fail

Large Text (above 18pt) WCAG AAA × Fail

Any Text WCAG AAA × Fail

Black Background



This preview shows how the Decimal color 13873069 looks on a black background.

Color Contrast Check

Large Text (above 18pt) WCAG AA ✓ Pass

Any Text WCAG AA ✓ Pass

Large Text (above 18pt) WCAG AAA ✓ Pass

Any Text WCAG AAA ✓ Pass

If you want to check with other color combinations, try the [Color Contrast Checker](#).

Decimal 13873069 Background



This preview shows how black text looks on a background with the Decimal color 13873069.




This preview shows how white text looks on a background with the Decimal color 13873069.

Color Blindness Simulation

Color vision deficiency is a very complex topic, and I could not describe the different causes any better than Wikipedia does, so if you want to learn more, you should check out their [article about color blindness](#).

Dichromacy





Tritanopia
14003642

Trichromacy



Original Color
13873069

Protanomaly
12891312

Deuteranomaly
13611181

Tritanomaly
13938357

Monochromacy



Original Color
13873069

Achromatopsia
12237498

Achromatomaly
12826293

CSS Examples

Text

The CSS property to change the color of the text to Decimal 13873069 is called "color". The color property can be set on classes, ids or directly on the HTML element.

This example shows how text in the color #D3AFAD looks like.

```
.text, #text, p{  
    color:#D3AFAD  
}
```

If you want to add a text shadow in that color use the text-shadow property, you can generate a text shadow directly with our [CSS Text Shadow Generator](#).

Here you see how black text with a 4 pixel #D3AFAD colored shadow looks like.

```
.shadow{ text-shadow: 4px 4px 2px #D3AFAD } }
```

Border

The CSS property to change the border of an element to Decimal 13873069 is called "border". The border property can be set on classes, ids or directly on the HTML element.

This example shows the color as border, it can be applied via the CSS property "border" or "border-color".

```
.border, #border, table{ border:4px solid #D3AFAD } }
```

If only the border color should be changed use the property `border-color`.

```
.border{ border-color:#D3AFAD }
```

If you want to add a box shadow in that color use:

Here you see how a box with a 4 pixel #D3AFAD colored shadow looks like.

```
.boxshadow{ -moz-box-shadow:4px 4px 4px  
4px #D3AFAD; -webkit-box-shadow:4px 4px  
4px 4px #D3AFAD; box-shadow:4px 4px 4px  
4px #D3AFAD }
```

Background

The CSS property to change the background color of an element to Decimal 13873069 is called "background". The background property can be set on classes, ids or directly on the HTML element.

```
.background, #background, body{  
background:#D3AFAD }
```

If only the background color should be changed can be used:

```
.background{ background-color:#D3AFAD }
```

This example shows the color as background, it is applied via the CSS property "background".

To optimize and compress your CSS code, you can use our [online CSS compressor and optimizer](#) based on csstidy. If you want to create a linear or radial gradient as background or border, check our [CSS Gradient Generator](#).

Hey! You found this booklet interesting? Support Converting Colors with the new Membership Option!

The pro membership hides all ads, plus gives you double the colors in the color bucket, and more awesome pro features!

[Learn more, Memberships starting at \\$2.50/m!](#)

**Follow me
on Twitter!**

@ConvertingColor