

# Converting Colors

Decimal(13873582)

Have a look what the booklet for  
Decimal(13873582) contains.

<b>Decimal(13873582)</b> .....	3
<i><b>Conversions</b></i> .....	4
<i><b>Details</b></i> .....	6
<i><b>Harmonies</b></i> .....	11
<i><b>Previews</b></i> .....	23
<i><b>Color Blindness Simulation</b></i> .....	26
<i><b>CSS Examples</b></i> .....	29

# **Color**

**Decimal(13873582)**

# Conversions

## Conversions Part 1

Format	Color
Hex	D3B1AE
RGB	211, 177, 174
RGB Percent	83%, 69%, 68%
CMY	0.1725, 0.3059, 0.3176
CMYK	0.00, 0.16, 0.18, 0.17
HSL	5°, 30%, 75%
HSV	5°, 18%, 83%
XYZ	50.2261, 48.3492, 46.7295
YIQ	186.8240, 21.2270, 6.2750

# Conversions

## Conversions Part 2

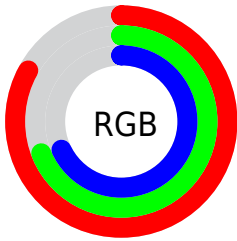
Format	Color
R <sub>Y</sub> B	211, 177, 174
Decimal	13873582
CIE Lab	75.04, 11.80, 6.11
CIE LCh	75, 13.291, 27.387
Yxy	48.3492, 0.3457, 0.3327
Android (android.graphics.Color)	4292063662 (0xFFD3B1AE)
YUV	186.8240, -6.3222, 21.2024
Hunter-Lab	69.5336, 7.2520, 8.8281

# Details

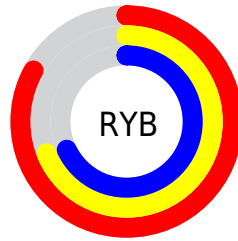
The Decimal color **13873582** is a light color, and the websafe version is hex **CC9999**. A complement of this color would be **11456723**, and the grayscale version is **12303291**.

A 20% lighter version of the original color is **16771557**, and **10255482** is the 20% darker color. If you saturate the color by 10%, you get **13868697**, and if you desaturate by 10%, it is **13878467**.

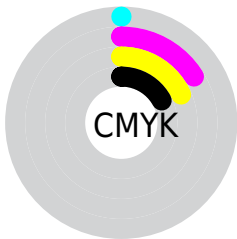
# Distribution



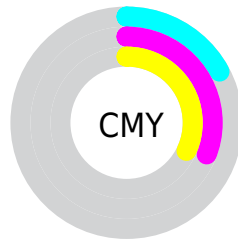
- Red (83%)
- Green (69%)
- Blue (68%)



- Red (83%)
- Yellow (69%)
- Blue (68%)



- Cyan (0%)
- Magenta (16%)
- Yellow (18%)
- Black (17%)



- Cyan (17%)
- Magenta (31%)
- Yellow (32%)

# Brightness & Saturation Gradients

These gradients show how the Decimal color 13873582 changes by changing the brightness by 10 percent. The first figure shows a shift by +10% for each color and the second figure -10%.

Similar to the brightness gradients but the following saturation gradients show a change of the Decimal color 13873582 by changing the saturation by 10% instead.



 13873582

 13873582

16777215

 12031635

 16771557

 10255482

 8545121

 6835017

 5190963

 3677982

 2296068

 0

 13873582

 13873582

13868697

13878467

13863556

13883608

13858671

13888493

13853530

13893631

13848645

13843759

13838618

13833733

13832448

# Harmonies

## Analogous

The Analogous color harmony consists of three colors that are next to each other on the color wheel.



13742522



13873582



13546661

# Triad

The Triadic color harmony groups three colors that are evenly spaced from another and form a triangle on the color wheel.



13873582



11058859



11188945

# Complementary

The Complementary color scheme is a pair of colors which are on the opposite of each other on the color wheel.



13873582



11456723

# Split Complementary

Split-complementary colors differ from the complementary color scheme. The scheme consists of three colors, the original color and two neighbors of the complement color.



10403533



13873582



10404023

# Square

The Square scheme is like the rectangle color scheme, but the four colors are evenly spaced on the color wheel.



13873582



11975587



10141891



12236494

# Rectangle

The Rectangle color scheme consists of four colors that form a rectangle on the color wheel.



13873582



13153953



10141891



10927056



# Sweetspot

The Sweet Spot groups the original color and five complimentary colors.



13873582



16774130



13872849



8419448



0



8421504



# Same Dimension

The Same Dimension uses a secret algorithm to generate beautiful new colors.



13873582



16764617



13878190



6905694



11013632



2687744



# Inverse Universe

The Inverse Universe completely reimagines the original color for something new.



11456723



13237247



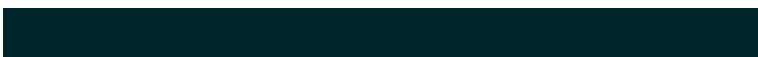
11452115



6187113



39848



9513



# Previews

## White Background



This preview shows how the Decimal color 13873582 looks on a white background.

## Color Contrast Check

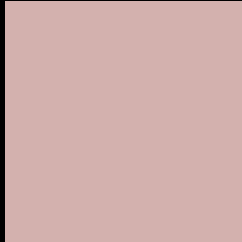
Large Text (above 18pt) WCAG AA × Fail

Any Text WCAG AA × Fail

Large Text (above 18pt) WCAG AAA × Fail

Any Text WCAG AAA × Fail

# Black Background



This preview shows how the Decimal color 13873582 looks on a black background.

## Color Contrast Check

Large Text (above 18pt) WCAG AA ✓ Pass

Any Text WCAG AA ✓ Pass

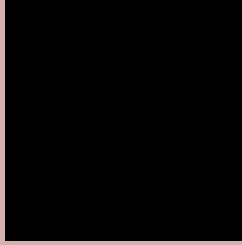
Large Text (above 18pt) WCAG AAA ✓ Pass

Any Text WCAG AAA ✓ Pass

If you want to check with other color combinations, try the [Color Contrast Checker](#).



## Decimal 13873582 Background



This preview shows how black text looks on a background with the Decimal color 13873582.




This preview shows how white text looks on a background with the Decimal color 13873582.

# Color Blindness Simulation

Color vision deficiency is a very complex topic, and I could not describe the different causes any better than Wikipedia does, so if you want to learn more, you should check out their [article about color blindness](#).

## Dichromacy





**Tritanopia**  
14004156

# Trichromacy



**Original Color**  
13873582

**Protanomaly**  
13022641

**Deuteranomaly**  
13677230

**Tritanomaly**  
13938871

# Monochromacy



**Original Color**  
13873582

**Achromatopsia**  
12303291

**Achromatomaly**  
12892086

# CSS Examples

## Text

The CSS property to change the color of the text to Decimal 13873582 is called "color". The color property can be set on classes, ids or directly on the HTML element.

This example shows how text in the color #D3B1AE looks like.

```
.text, #text, p{  
    color:#D3B1AE  
}
```

If you want to add a text shadow in that color use the text-shadow property, you can generate a text shadow directly with our [CSS Text Shadow Generator](#).

Here you see how black text with a 4 pixel #D3B1AE colored shadow looks like.

```
.shadow{ text-shadow: 4px 4px 2px #D3B1AE
}
```

## Border

The CSS property to change the border of an element to Decimal 13873582 is called "border". The border property can be set on classes, ids or directly on the HTML element.

This example shows the color as border, it can be applied via the CSS property "border" or "border-color".

```
.border, #border, table{ border:4px solid
#D3B1AE }
```

If only the border color should be changed use the property `border-color`.

```
.border{ border-color:#D3B1AE }
```

If you want to add a box shadow in that color use:

Here you see how a box with a 4 pixel #D3B1AE colored shadow looks like.

```
.boxshadow{ -moz-box-shadow:4px 4px 4px  
4px #D3B1AE; -webkit-box-shadow:4px 4px  
4px 4px #D3B1AE; box-shadow:4px 4px 4px  
4px #D3B1AE }
```

# Background

The CSS property to change the background color of an element to Decimal 13873582 is called "background". The background property can be set on classes, ids or directly on the HTML element.

```
.background, #background, body{  
background:#D3B1AE }
```

If only the background color should be changed can be used:

```
.background{ background-color:#D3B1AE }
```

This example shows the color as background, it is applied via the CSS property "background".

To optimize and compress your CSS code, you can use our [online CSS compressor and optimizer](#) based on csstidy. If you want to create a linear or radial gradient as background or border, check our [CSS Gradient Generator](#).



Hey! You found this booklet interesting? Support Converting Colors with the new Membership Option!

The pro membership hides all ads, plus gives you double the colors in the color bucket, and more awesome pro features!

**[Learn more, Memberships starting at \\$2.50/m!](#)**

**Follow me  
on Twitter!**

@ConvertingColor