

# Converting Colors

Decimal(13874064)

Have a look what the booklet for  
Decimal(13874064) contains.

<b>Decimal(13874064)</b> .....	3
<i><b>Conversions</b></i> .....	4
<i><b>Details</b></i> .....	6
<i><b>Harmonies</b></i> .....	11
<i><b>Previews</b></i> .....	23
<i><b>Color Blindness Simulation</b></i> .....	26
<i><b>CSS Examples</b></i> .....	29

# **Color**

**Decimal(13874064)**

# Conversions

## Conversions Part 1

Format	Color
Hex	D3B390
RGB	211, 179, 144
RGB Percent	83%, 70%, 56%
CMY	0.1725, 0.2980, 0.4353
CMYK	0.00, 0.15, 0.32, 0.17
HSL	31°, 43%, 70%
HSV	31°, 32%, 83%
XYZ	48.0181, 48.1027, 33.1395
YIQ	184.5780, 30.3070, -4.1010

# Conversions

## Conversions Part 2

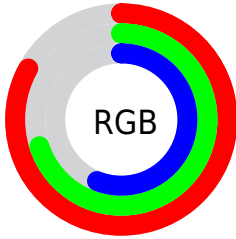
<b>Format</b>	<b>Color</b>
R <sub>Y</sub> B	205, 211, 144
Decimal	13874064
CIE Lab	74.89, 6.46, 22.17
CIE LCh	75, 23.095, 73.766
Yxy	48.1027, 0.3715, 0.3721
Android (android.graphics.Color)	4292064144 (0xFFD3B390)
YUV	184.5780, -20.0050, 23.1721
Hunter-Lab	69.3561, 2.2098, 20.2195

# Details

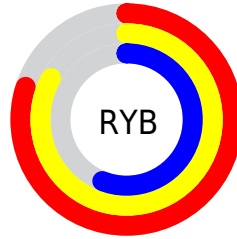
The Decimal color **13874064** is a light color, and the websafe version is hex **FFCC99**. A complement of this color would be **9482451**, and the grayscale version is **12171705**.

A 20% lighter version of the original color is **16772038**, and **10190429** is the 20% darker color. If you saturate the color by 10%, you get **13871483**, and if you desaturate by 10%, it is **13876645**.

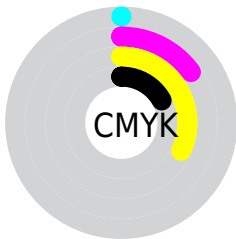
# Distribution



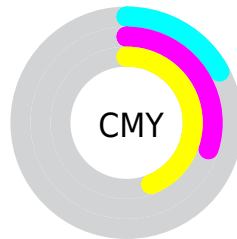
- Red (83%)
- Green (70%)
- Blue (56%)



- Red (80%)
- Yellow (83%)
- Blue (56%)



- Cyan (0%)
- Magenta (15%)
- Yellow (32%)
- Black (17%)



- Cyan (17%)
- Magenta (30%)
- Yellow (44%)

# Brightness & Saturation Gradients

These gradients show how the Decimal color 13874064 changes by changing the brightness by 10 percent. The first figure shows a shift by +10% for each color and the second figure -10%.

Similar to the brightness gradients but the following saturation gradients show a change of the Decimal color 13874064 by changing the saturation by 10% instead.



 13874064

 13874064


16777215

 12032118

 16772038

 10190429

 16777186

 8480070

 6769967

 5125913

 3547392

 2034688

 0

 13874064

 13874064

 13871483

 13876645

 13868902

 13879226

 13866321

 13881807

 13863740

 13884388

 13861159

 13886969

 13858577

 13889535

 13856256

 13892351

 13893631

# Harmonies

## Analogous

The Analogous color harmony consists of three colors that are next to each other on the color wheel.



14790044



13874064



12499599

# Triad

The Triadic color harmony groups three colors that are evenly spaced from another and form a triangle on the color wheel.



13874064



8373698



13152471

# Complementary

The Complementary color scheme is a pair of colors which are on the opposite of each other on the color wheel.



13874064



9482451

# Split Complementary

Split-complementary colors differ from the complementary color scheme. The scheme consists of three colors, the original color and two neighbors of the complement color.



11384801



13874064



8373205

# Square

The Square scheme is like the rectangle color scheme, but the four colors are evenly spaced on the color wheel.



13874064



9421996



9551585



14461637

# Rectangle

The Rectangle color scheme consists of four colors that form a rectangle on the color wheel.



13874064



11452053



9551585



12563164

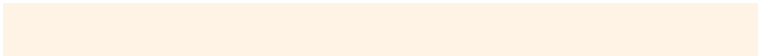


# Sweetspot

The Sweet Spot groups the original color and five complimentary colors.



13874064



16774118



13865136



8419440



0



8421504



# Same Dimension

The Same Dimension uses a secret algorithm to generate beautiful new colors.



13874064



16765342



13816720



6906974



11032576



2692352



# Inverse Universe

The Inverse Universe completely reimagines the original color for something new.



9482451



10407167



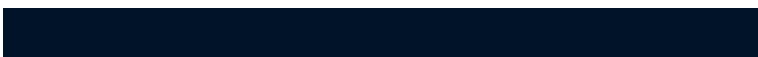
9539795



6185833



20648

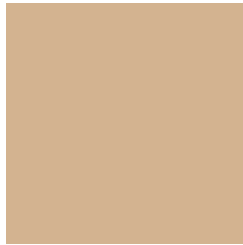


4905



# Previews

## White Background



This preview shows how the Decimal color 13874064 looks on a white background.

## Color Contrast Check

Large Text (above 18pt) WCAG AA × Fail

Any Text WCAG AA × Fail

Large Text (above 18pt) WCAG AAA × Fail

Any Text WCAG AAA × Fail

# Black Background



This preview shows how the Decimal color 13874064 looks on a black background.

## Color Contrast Check

Large Text (above 18pt) WCAG AA ✓ Pass

Any Text WCAG AA ✓ Pass

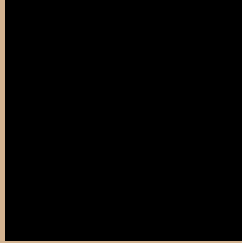
Large Text (above 18pt) WCAG AAA ✓ Pass

Any Text WCAG AAA ✓ Pass

If you want to check with other color combinations, try the [Color Contrast Checker](#).



## Decimal 13874064 Background



This preview shows how black text looks on a background with the Decimal color 13874064.



This preview shows how white text looks on a background with the Decimal color 13874064.

# Color Blindness Simulation

Color vision deficiency is a very complex topic, and I could not describe the different causes any better than Wikipedia does, so if you want to learn more, you should check out their [article about color blindness](#).

## Dichromacy



**Original Color**  
13874064

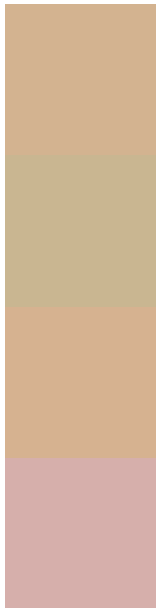
**Protanopia**  
12892306

**Deuteranopia**  
14201232



**Tritanopia**  
14200251

# Trichromacy



**Original Color**  
13874064

**Protanomaly**  
13219473

**Deuteranomaly**  
14070416

**Tritanomaly**  
14069675

# Monochromacy



**Original Color**  
13874064

**Achromatopsia**  
12171705

**Achromatomaly**  
12761002

# CSS Examples

## Text

The CSS property to change the color of the text to Decimal 13874064 is called "color". The color property can be set on classes, ids or directly on the HTML element.

This example shows how text in the color #D3B390 looks like.

```
.text, #text, p{  
    color:#D3B390  
}
```

If you want to add a text shadow in that color use the text-shadow property, you can generate a text shadow directly with our [CSS Text Shadow Generator](#).

Here you see how black text with a 4 pixel #D3B390 colored shadow looks like.

```
.shadow{ text-shadow: 4px 4px 2px #D3B390
}
```

## Border

The CSS property to change the border of an element to Decimal 13874064 is called "border". The border property can be set on classes, ids or directly on the HTML element.

This example shows the color as border, it can be applied via the CSS property "border" or "border-color".

```
.border, #border, table{ border:4px solid
#D3B390 }
```

If only the border color should be changed use the property `border-color`.

```
.border{ border-color:#D3B390 }
```

If you want to add a box shadow in that color use:

Here you see how a box with a 4 pixel #D3B390 colored shadow looks like.

```
.boxshadow{ -moz-box-shadow:4px 4px 4px  
4px #D3B390; -webkit-box-shadow:4px 4px  
4px 4px #D3B390; box-shadow:4px 4px 4px  
4px #D3B390 }
```

# Background

The CSS property to change the background color of an element to Decimal 13874064 is called "background". The background property can be set on classes, ids or directly on the HTML element.

```
.background, #background, body{  
background:#D3B390 }
```

If only the background color should be changed can be used:

```
.background{ background-color:#D3B390 }
```

This example shows the color as background, it is applied via the CSS property "background".

To optimize and compress your CSS code, you can use our [online CSS compressor and optimizer](#) based on csstidy. If you want to create a linear or radial gradient as background or border, check our [CSS Gradient Generator](#).



Hey! You found this booklet interesting? Support Converting Colors with the new Membership Option!

The pro membership hides all ads, plus gives you double the colors in the color bucket, and more awesome pro features!

**[Learn more, Memberships starting at \\$2.50/m!](#)**

**Follow me  
on Twitter!**

@ConvertingColor