

# Converting Colors

Decimal(13874107)

Have a look what the booklet for  
Decimal(13874107) contains.

<b>Decimal(13874107)</b> .....	3
<i><b>Conversions</b></i> .....	4
<i><b>Details</b></i> .....	6
<i><b>Harmonies</b></i> .....	11
<i><b>Previews</b></i> .....	23
<i><b>Color Blindness Simulation</b></i> .....	26
<i><b>CSS Examples</b></i> .....	29

# **Color**

**Decimal(13874107)**

# Conversions

## Conversions Part 1

Format	Color
Hex	D3B3BB
RGB	211, 179, 187
RGB Percent	83%, 70%, 73%
CMY	0.1725, 0.2980, 0.2667
CMYK	0.00, 0.15, 0.11, 0.17
HSL	345°, 27%, 76%
HSV	345°, 15%, 83%
XYZ	51.9537, 49.6769, 53.8641
YIQ	189.4800, 16.5040, 9.2720

# Conversions

## Conversions Part 2

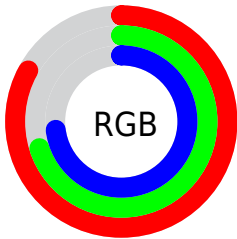
Format	Color
R <sub>Y</sub> B	211, 179, 187
Decimal	13874107
CIE Lab	75.87, 12.82, 0.22
CIE LCh	76, 12.826, 0.986
Yxy	49.6769, 0.3341, 0.3195
Android (android.graphics.Color)	4292064187 (0xFFD3B3BB)
YUV	189.4800, -1.2226, 18.8730
Hunter-Lab	70.4819, 8.2329, 4.0264

# Details

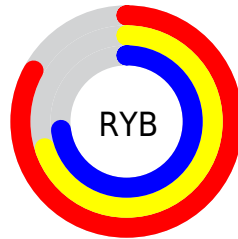
The Decimal color **13874107** is a light color, and the websafe version is hex **CC9999**. A complement of this color would be **11785163**, and the grayscale version is **12434877**.

A 20% lighter version of the original color is **16772083**, and **10256006** is the 20% darker color. If you saturate the color by 10%, you get **13868715**, and if you desaturate by 10%, it is **13879499**.

# Distribution



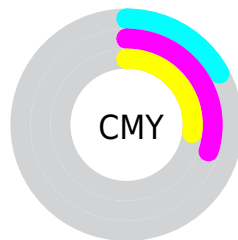
- Red (83%)
- Green (70%)
- Blue (73%)



- Red (83%)
- Yellow (70%)
- Blue (73%)



- Cyan (0%)
- Magenta (15%)
- Yellow (11%)
- Black (17%)



- Cyan (17%)
- Magenta (30%)
- Yellow (27%)

# Brightness & Saturation Gradients

These gradients show how the Decimal color 13874107 changes by changing the brightness by 10 percent. The first figure shows a shift by +10% for each color and the second figure -10%.

Similar to the brightness gradients but the following saturation gradients show a change of the Decimal color 13874107 by changing the saturation by 10% instead.



 13874107

 13874107

16777215

 12032160

 16772083

 10256006

 8545645

 6901076

 5256765

 3744040

 2296595

 0

 13874107

 13874107

 13868715

 13879499

 13863323

 13884891

 13857932

 13890282

 13852540

 13893626

 13847148

 13893631

 13841500

 13836108

 13830716

 13828149

# Harmonies

## Analogous

The Analogous color harmony consists of three colors that are next to each other on the color wheel.



13350343



13874107



13939887

# Triad

The Triadic color harmony groups three colors that are evenly spaced from another and form a triangle on the color wheel.



13874107



12041895



10731471

# Complementary

The Complementary color scheme is a pair of colors which are on the opposite of each other on the color wheel.



13874107



11785163

# Split Complementary

Split-complementary colors differ from the complementary color scheme. The scheme consists of three colors, the original color and two neighbors of the complement color.



10339015



13874107



11190703

# Square

The Square scheme is like the rectangle color scheme, but the four colors are evenly spaced on the color wheel.



13874107



12892835



10535611



11517138

# Rectangle

The Rectangle color scheme consists of four colors that form a rectangle on the color wheel.



13874107



13743529



10535611



10535117

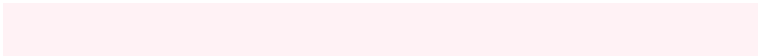


# Sweetspot

The Sweet Spot groups the original color and five complimentary colors.



13874107



16773877



13349843



8419450



0



8421504



# Same Dimension

The Same Dimension uses a secret algorithm to generate beautiful new colors.



13874107



16765405



13876147



6905441



11010090



2686986



# Inverse Universe

The Inverse Universe completely reimagines the original color for something new.



13874107



16765405



11783123



6905441



11010090

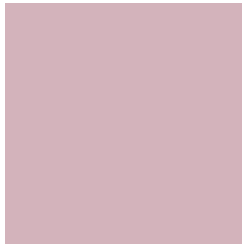


2686986



# Previews

## White Background



This preview shows how the Decimal color 13874107 looks on a white background.

## Color Contrast Check

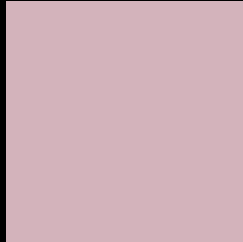
Large Text (above 18pt) WCAG AA × Fail

Any Text WCAG AA × Fail

Large Text (above 18pt) WCAG AAA × Fail

Any Text WCAG AAA × Fail

# Black Background



This preview shows how the Decimal color 13874107 looks on a black background.

## Color Contrast Check

Large Text (above 18pt) WCAG AA ✓ Pass

Any Text WCAG AA ✓ Pass

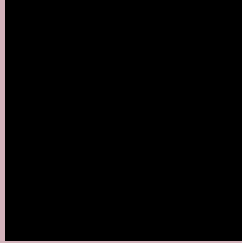
Large Text (above 18pt) WCAG AAA ✓ Pass

Any Text WCAG AAA ✓ Pass

If you want to check with other color combinations, try the [Color Contrast Checker](#).



## Decimal 13874107 Background



This preview shows how black text looks on a background with the Decimal color 13874107.



This preview shows how white text looks on a background with the Decimal color 13874107.

# Color Blindness Simulation

Color vision deficiency is a very complex topic, and I could not describe the different causes any better than Wikipedia does, so if you want to learn more, you should check out their [article about color blindness](#).


## Dichromacy



**Original Color**  
13874107

**Protanopia**  
12434111

**Deuteranopia**  
13481403



**Tritanopia**  
13939392

# Trichromacy



**Original Color**  
13874107

**Protanomaly**  
12957630

**Deuteranomaly**  
13612219

**Tritanomaly**  
13939390

# Monochromacy



**Original Color**  
13874107

**Achromatopsia**  
12434877

**Achromatomaly**  
12958140

# CSS Examples

## Text

The CSS property to change the color of the text to Decimal 13874107 is called "color". The color property can be set on classes, ids or directly on the HTML element.

This example shows how text in the color #D3B3BB looks like.

```
.text, #text, p{  
    color:#D3B3BB  
}
```

If you want to add a text shadow in that color use the text-shadow property, you can generate a text shadow directly with our [CSS Text Shadow Generator](#).

Here you see how black text with a 4 pixel #D3B3BB colored shadow looks like.

```
.shadow{ text-shadow: 4px 4px 2px #D3B3BB
}
```

## Border

The CSS property to change the border of an element to Decimal 13874107 is called "border". The border property can be set on classes, ids or directly on the HTML element.

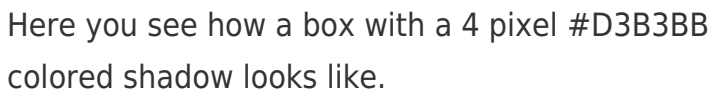
This example shows the color as border, it can be applied via the CSS property "border" or "border-color".

```
.border, #border, table{ border:4px solid
#D3B3BB }
```

If only the border color should be changed use the property `border-color`.

```
.border{ border-color:#D3B3BB }
```

If you want to add a box shadow in that color use:



Here you see how a box with a 4 pixel #D3B3BB colored shadow looks like.

```
.boxshadow{ -moz-box-shadow:4px 4px 4px  
4px #D3B3BB; -webkit-box-shadow:4px 4px  
4px 4px #D3B3BB; box-shadow:4px 4px 4px  
4px #D3B3BB }
```

# Background

The CSS property to change the background color of an element to Decimal 13874107 is called "background". The background property can be set on classes, ids or directly on the HTML element.

```
.background, #background, body{  
background:#D3B3BB }
```

If only the background color should be changed can be used:

```
.background{ background-color:#D3B3BB }
```

This example shows the color as background, it is applied via the CSS property "background".

To optimize and compress your CSS code, you can use our [online CSS compressor and optimizer](#) based on csstidy. If you want to create a linear or radial gradient as background or border, check our [CSS Gradient Generator](#).



Hey! You found this booklet interesting? Support Converting Colors with the new Membership Option!

The pro membership hides all ads, plus gives you double the colors in the color bucket, and more awesome pro features!

**[Learn more, Memberships starting at \\$2.50/m!](#)**

**Follow me  
on Twitter!**

@ConvertingColor