

Converting Colors

Decimal(13874339)

Have a look what the booklet for
Decimal(13874339) contains.

Decimal(13874339)	3
<i>Conversions</i>	4
<i>Details</i>	6
<i>Harmonies</i>	11
<i>Previews</i>	23
<i>Color Blindness Simulation</i>	26
<i>CSS Examples</i>	29

Color

Decimal(13874339)

Conversions

Conversions Part 1

Format	Color
Hex	D3B4A3
RGB	211, 180, 163
RGB Percent	83%, 71%, 64%
CMY	0.1725, 0.2941, 0.3608
CMYK	0.00, 0.15, 0.23, 0.17
HSL	21°, 35%, 73%
HSV	21°, 23%, 83%
XYZ	49.7961, 49.1357, 41.5099
YIQ	187.3310, 23.9330, 1.2850

Conversions

Conversions Part 2

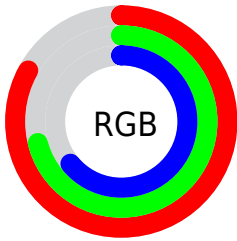
Format	Color
R _Y B	211, 189, 163
Decimal	13874339
CIE Lab	75.54, 8.53, 12.80
CIE LCh	76, 15.381, 56.329
Yxy	49.1357, 0.3546, 0.3499
Android (android.graphics.Color)	4292064419 (0xFFD3B4A3)
YUV	187.3310, -11.9952, 20.7577
Hunter-Lab	70.0969, 4.1349, 13.9575

Details

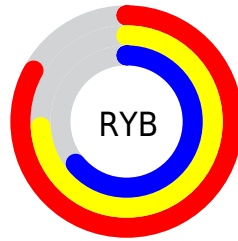
The Decimal color **13874339** is a light color, and the websafe version is hex **CC9999**. A complement of this color would be **10732243**, and the grayscale version is **12303291**.

A 20% lighter version of the original color is **16772314**, and **10256239** is the 20% darker color. If you saturate the color by 10%, you get **13870734**, and if you desaturate by 10%, it is **13877944**.

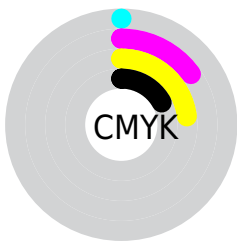
Distribution



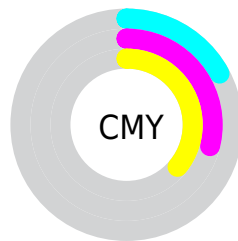
- Red (83%)
- Green (71%)
- Blue (64%)



- Red (83%)
- Yellow (74%)
- Blue (64%)



- Cyan (0%)
- Magenta (15%)
- Yellow (23%)
- Black (17%)



- Cyan (17%)
- Magenta (29%)
- Yellow (36%)

Brightness & Saturation Gradients

These gradients show how the Decimal color 13874339 changes by changing the brightness by 10 percent. The first figure shows a shift by +10% for each color and the second figure -10%.

Similar to the brightness gradients but the following saturation gradients show a change of the Decimal color 13874339 by changing the saturation by 10% instead.

 13874339

 13874339

16777215

 12032393

 16772314

 10256239

 16777206

 8480343

 6835776

 5191466

 3613205

 2231296

 0

 13874339

 13874339

 13870734

 13877944

 13867385

 13881293

 13863780

 13884898

 13860175

 13888503

 13856825

 13891839

 13853220

 13893631

 13849871

 13847296

Harmonies

Analogous

The Analogous color harmony consists of three colors that are next to each other on the color wheel.



14201262



13874339



13088926

Triad

The Triadic color harmony groups three colors that are evenly spaced from another and form a triangle on the color wheel.



13874339



10207928



12302291

Complementary

The Complementary color scheme is a pair of colors which are on the opposite of each other on the color wheel.



13874339



10732243

Split Complementary

Split-complementary colors differ from the complementary color scheme. The scheme consists of three colors, the original color and two neighbors of the complement color.



11123926



13874339



9814726

Square

The Square scheme is like the rectangle color scheme, but the four colors are evenly spaced on the color wheel.



13874339



11059626



10141905



13349834

Rectangle

The Rectangle color scheme consists of four colors that form a rectangle on the color wheel.



13874339



12434591



10141905



11909589

Sweetspot

The Sweet Spot groups the original color and five complimentary colors.



13874339



16774125



13870018



8419701



0



8421504

Same Dimension

The Same Dimension uses a secret algorithm to generate beautiful new colors.



13874339



16765882



13880483



6906462



11025408



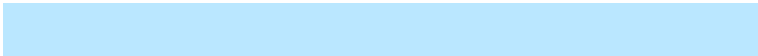
2690560

Inverse Universe

The Inverse Universe completely reimagines the original color for something new.



10732243



12249087



10726099



6186345



28072



6697

Previews

White Background



This preview shows how the Decimal color 13874339 looks on a white background.

Color Contrast Check

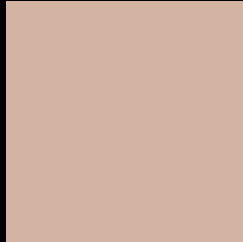
Large Text (above 18pt) WCAG AA × Fail

Any Text WCAG AA × Fail

Large Text (above 18pt) WCAG AAA × Fail

Any Text WCAG AAA × Fail

Black Background



This preview shows how the Decimal color 13874339 looks on a black background.

Color Contrast Check

Large Text (above 18pt) WCAG AA ✓ Pass

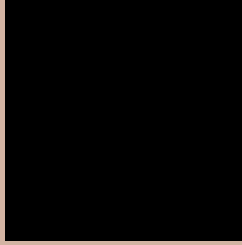
Any Text WCAG AA ✓ Pass

Large Text (above 18pt) WCAG AAA ✓ Pass

Any Text WCAG AAA ✓ Pass

If you want to check with other color combinations, try the [Color Contrast Checker](#).

Decimal 13874339 Background



This preview shows how black text looks on a background with the Decimal color 13874339.



This preview shows how white text looks on a background with the Decimal color 13874339.

Color Blindness Simulation

Color vision deficiency is a very complex topic, and I could not describe the different causes any better than Wikipedia does, so if you want to learn more, you should check out their [article about color blindness](#).

Dichromacy



Original Color
13874339

Protanopia
12761766

Deuteranopia
14005155



Tritanopia
14069950

Trichromacy



Original Color
13874339

Protanomaly
13154469

Deuteranomaly
13939619

Tritanomaly
14004660

Monochromacy



Original Color
13874339

Achromatopsia
12303291

Achromatomaly
12892338

CSS Examples

Text

The CSS property to change the color of the text to Decimal 13874339 is called "color". The color property can be set on classes, ids or directly on the HTML element.

This example shows how text in the color #D3B4A3 looks like.

```
.text, #text, p{  
    color:#D3B4A3  
}
```

If you want to add a text shadow in that color use the text-shadow property, you can generate a text shadow directly with our [CSS Text Shadow Generator](#).

Here you see how black text with a 4 pixel #D3B4A3 colored shadow looks like.

```
.shadow{ text-shadow: 4px 4px 2px #D3B4A3
}
```

Border

The CSS property to change the border of an element to Decimal 13874339 is called "border". The border property can be set on classes, ids or directly on the HTML element.

This example shows the color as border, it can be applied via the CSS property "border" or "border-color".

```
.border, #border, table{ border:4px solid
#D3B4A3 }
```

If only the border color should be changed use the property `border-color`.

```
.border{ border-color:#D3B4A3 }
```

If you want to add a box shadow in that color use:

Here you see how a box with a 4 pixel #D3B4A3 colored shadow looks like.

```
.boxshadow{ -moz-box-shadow:4px 4px 4px  
4px #D3B4A3; -webkit-box-shadow:4px 4px  
4px 4px #D3B4A3; box-shadow:4px 4px 4px  
4px #D3B4A3 }
```

Background

The CSS property to change the background color of an element to Decimal 13874339 is called "background". The background property can be set on classes, ids or directly on the HTML element.

```
.background, #background, body{  
background:#D3B4A3 }
```

If only the background color should be changed can be used:

```
.background{ background-color:#D3B4A3 }
```

This example shows the color as background, it is applied via the CSS property "background".

To optimize and compress your CSS code, you can use our [online CSS compressor and optimizer](#) based on csstidy. If you want to create a linear or radial gradient as background or border, check our [CSS Gradient Generator](#).

Hey! You found this booklet interesting? Support Converting Colors with the new Membership Option!

The pro membership hides all ads, plus gives you double the colors in the color bucket, and more awesome pro features!

[Learn more, Memberships starting at \\$2.50/m!](#)

**Follow me
on Twitter!**

@ConvertingColor