

# Converting Colors

Decimal(13875650)

Have a look what the booklet for  
Decimal(13875650) contains.

<b>Decimal(13875650)</b> .....	3
<i><b>Conversions</b></i> .....	4
<i><b>Details</b></i> .....	6
<i><b>Harmonies</b></i> .....	11
<i><b>Previews</b></i> .....	23
<i><b>Color Blindness Simulation</b></i> .....	26
<i><b>CSS Examples</b></i> .....	29

# **Color**

**Decimal(13875650)**

# Conversions

## Conversions Part 1

Format	Color
Hex	D3B9C2
RGB	211, 185, 194
RGB Percent	83%, 73%, 76%
CMY	0.1725, 0.2745, 0.2392
CMYK	0.00, 0.12, 0.08, 0.17
HSL	339°, 23%, 78%
HSV	339°, 12%, 83%
XYZ	53.9505, 52.4418, 58.3177
YIQ	193.8000, 12.6070, 8.3110

# Conversions

## Conversions Part 2

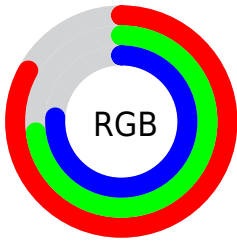
<b>Format</b>	<b>Color</b>
R <sub>Y</sub> B	211, 185, 194
Decimal	13875650
CIE Lab	77.54, 10.78, -1.14
CIE LCh	78, 10.841, 353.973
Yxy	52.4418, 0.3275, 0.3184
Android (android.graphics.Color)	4292065730 (0xFFD3B9C2)
YUV	193.8000, 0.0986, 15.0844
Hunter-Lab	72.4167, 6.2533, 2.9451

# Details

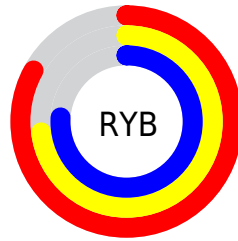
The Decimal color **13875650** is a light color, and the websafe version is hex **CCCCCC**. A complement of this color would be **12178378**, and the grayscale version is **12763842**.

A 20% lighter version of the original color is **16773626**, and **10257548** is the 20% darker color. If you saturate the color by 10%, you get **13870260**, and if you desaturate by 10%, it is **13881040**.

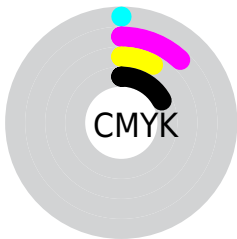
# Distribution



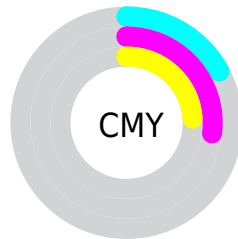
- Red (83%)
- Green (73%)
- Blue (76%)



- Red (83%)
- Yellow (73%)
- Blue (76%)



- Cyan (0%)
- Magenta (12%)
- Yellow (8%)
- Black (17%)



- Cyan (17%)
- Magenta (27%)
- Yellow (24%)

# Brightness & Saturation Gradients

These gradients show how the Decimal color 13875650 changes by changing the brightness by 10 percent. The first figure shows a shift by +10% for each color and the second figure -10%.

Similar to the brightness gradients but the following saturation gradients show a change of the Decimal color 13875650 by changing the saturation by 10% instead.



 13875650

 13875650

16777215

 12033703

 16773626

 10257548

 8547187

 6902362

 5323587

 3745069

 2298136

 65536

 0

 13875650

 13875650

 13870260

 13881040

 13864870

 13886430

 13859481

 13891819

 13854091

 13893625

 13848701

 13893631

 13843055

 13837665

 13832276

 13828169

# Harmonies

## Analogous

The Analogous color harmony consists of three colors that are next to each other on the color wheel.



13351884



13875650



14072248

# Triad

The Triadic color harmony groups three colors that are evenly spaced from another and form a triangle on the color wheel.



13875650



12566957



11191503

# Complementary

The Complementary color scheme is a pair of colors which are on the opposite of each other on the color wheel.



13875650



12178378

# Split Complementary

Split-complementary colors differ from the complementary color scheme. The scheme consists of three colors, the original color and two neighbors of the complement color.



10995143



13875650



11846836

# Square

The Square scheme is like the rectangle color scheme, but the four colors are evenly spaced on the color wheel.



13875650



13287084



11191997



11780563

# Rectangle

The Rectangle color scheme consists of four colors that form a rectangle on the color wheel.



13875650



13941426



11191997



11060685



# Sweetspot

The Sweet Spot groups the original color and five complimentary colors.



13875650



16774648



13285843



8419707



0



8421504



# Same Dimension

The Same Dimension uses a secret algorithm to generate beautiful new colors.



13875650



16767462



13876665



6905442



11010106



2686990



# Inverse Universe

The Inverse Universe completely reimagines the original color for something new.



13875650



16767462



12177363



6905442



11010106

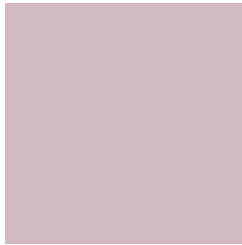


2686990



# Previews

## White Background



This preview shows how the Decimal color 13875650 looks on a white background.

## Color Contrast Check

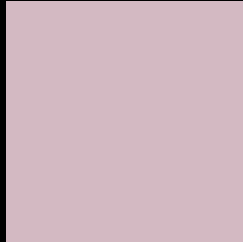
Large Text (above 18pt) WCAG AA × Fail

Any Text WCAG AA × Fail

Large Text (above 18pt) WCAG AAA × Fail

Any Text WCAG AAA × Fail

# Black Background



This preview shows how the Decimal color 13875650 looks on a black background.

## Color Contrast Check

Large Text (above 18pt) WCAG AA ✓ Pass

Any Text WCAG AA ✓ Pass

Large Text (above 18pt) WCAG AAA ✓ Pass

Any Text WCAG AAA ✓ Pass

If you want to check with other color combinations, try the [Color Contrast Checker](#).



## Decimal 13875650 Background



This preview shows how black text looks on a background with the Decimal color 13875650.



This preview shows how white text looks on a background with the Decimal color 13875650.

# Color Blindness Simulation

Color vision deficiency is a very complex topic, and I could not describe the different causes any better than Wikipedia does, so if you want to learn more, you should check out their [article about color blindness](#).


## Dichromacy



**Original Color**  
13875650

**Protanopia**  
12697541

**Deuteranopia**  
13744834



**Tritanopia**  
13940935

# Trichromacy



**Original Color**  
13875650

**Protanomaly**  
13155780

**Deuteranomaly**  
13810370

**Tritanomaly**  
13940933

# Monochromacy



**Original Color**  
13875650

**Achromatopsia**  
12763842

**Achromatomaly**  
13156290

# CSS Examples

## Text

The CSS property to change the color of the text to Decimal 13875650 is called "color". The color property can be set on classes, ids or directly on the HTML element.

This example shows how text in the color #D3B9C2 looks like.

```
.text, #text, p{  
    color:#D3B9C2  
}
```

If you want to add a text shadow in that color use the text-shadow property, you can generate a text shadow directly with our [CSS Text Shadow Generator](#).

Here you see how black text with a 4 pixel #D3B9C2 colored shadow looks like.

```
.shadow{ text-shadow: 4px 4px 2px #D3B9C2
}
```

## Border

The CSS property to change the border of an element to Decimal 13875650 is called "border". The border property can be set on classes, ids or directly on the HTML element.

This example shows the color as border, it can be applied via the CSS property "border" or "border-color".

```
.border, #border, table{ border:4px solid
#D3B9C2 }
```

If only the border color should be changed use the property `border-color`.

```
.border{ border-color:#D3B9C2 }
```

If you want to add a box shadow in that color use:

Here you see how a box with a 4 pixel #D3B9C2 colored shadow looks like.

```
.boxshadow{ -moz-box-shadow:4px 4px 4px  
4px #D3B9C2; -webkit-box-shadow:4px 4px  
4px 4px #D3B9C2; box-shadow:4px 4px 4px  
4px #D3B9C2 }
```

# Background

The CSS property to change the background color of an element to Decimal 13875650 is called "background". The background property can be set on classes, ids or directly on the HTML element.

```
.background, #background, body{  
background:#D3B9C2 }
```

If only the background color should be changed can be used:

```
.background{ background-color:#D3B9C2 }
```

This example shows the color as background, it is applied via the CSS property "background".

To optimize and compress your CSS code, you can use our [online CSS compressor and optimizer](#) based on csstidy. If you want to create a linear or radial gradient as background or border, check our [CSS Gradient Generator](#).



Hey! You found this booklet interesting? Support Converting Colors with the new Membership Option!

The pro membership hides all ads, plus gives you double the colors in the color bucket, and more awesome pro features!

**[Learn more, Memberships starting at \\$2.50/m!](#)**

**Follow me  
on Twitter!**

@ConvertingColor