

Converting Colors

Decimal(13878194)

Have a look what the booklet for
Decimal(13878194) contains.

Decimal(13878194)	3
<i>Conversions</i>	4
<i>Details</i>	6
<i>Harmonies</i>	11
<i>Previews</i>	23
<i>Color Blindness Simulation</i>	26
<i>CSS Examples</i>	29

Color

Decimal(13878194)

Conversions

Conversions Part 1

Format	Color
Hex	D3C3B2
RGB	211, 195, 178
RGB Percent	83%, 76%, 70%
CMY	0.1725, 0.2353, 0.3020
CMYK	0.00, 0.08, 0.16, 0.17
HSL	31°, 27%, 76%
HSV	31°, 16%, 83%
XYZ	54.4150, 56.0934, 50.0786
YIQ	197.8460, 14.9930, -1.8950

Conversions

Conversions Part 2

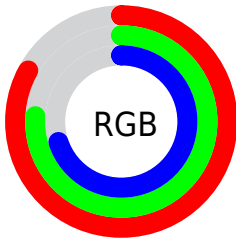
Format	Color
RYB	209, 211, 178
Decimal	13878194
CIELab	79.67, 2.82, 10.56
CIELCh	80, 10.931, 75.070
Yxy	56.0934, 0.3389, 0.3493
Android (android.graphics.Color)	4292068274 (0xFFD3C3B2)
YUV	197.8460, -9.7841, 11.5361
Hunter-Lab	74.8956, -1.3790, 12.7829

Details

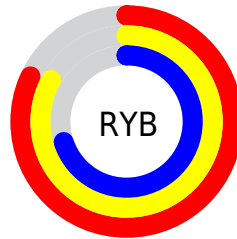
The Decimal color **13878194** is a light color, and the websafe version is hex **CCCCCC**. A complement of this color would be **11715283**, and the grayscale version is **13027014**.

A 20% lighter version of the original color is **16776426**, and **10259837** is the 20% darker color. If you saturate the color by 10%, you get **13875613**, and if you desaturate by 10%, it is **13880775**.

Distribution



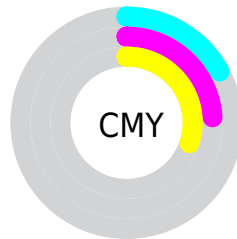
- Red (83%)
- Green (76%)
- Blue (70%)



- Red (82%)
- Yellow (83%)
- Blue (70%)



- Cyan (0%)
- Magenta (8%)
- Yellow (16%)
- Black (17%)



- Cyan (17%)
- Magenta (24%)
- Yellow (30%)

Brightness & Saturation Gradients

These gradients show how the Decimal color 13878194 changes by changing the brightness by 10 percent. The first figure shows a shift by +10% for each color and the second figure -10%.

Similar to the brightness gradients but the following saturation gradients show a change of the Decimal color 13878194 by changing the saturation by 10% instead.

■ 13878194

■ 13878194

16777215

■ 12036247

■ 16776426

■ 10259837

■ 8549476

■ 6904652

■ 5260342

■ 3747360

■ 2300170

■ 262144

■ 0

 13878194

 13878194

 13875613

 13880775

 13873032

 13883356

 13870195

 13886193

 13867614

 13888767

 13865033

 13891327

 13862451

 13893631

 13859614

 13857033

 13856000

Harmonies

Analogous

The Analogous color harmony consists of three colors that are next to each other on the color wheel.



14336183



13878194



13158066

Triad

The Triadic color harmony groups three colors that are evenly spaced from another and form a triangle on the color wheel.



13878194



11390154



13550036

Complementary

The Complementary color scheme is a pair of colors which are on the opposite of each other on the color wheel.



13878194



11715283

Split Complementary

Split-complementary colors differ from the complementary color scheme. The scheme consists of three colors, the original color and two neighbors of the complement color.



12699097



13878194



11455187

Square

The Square scheme is like the rectangle color scheme, but the four colors are evenly spaced on the color wheel.



13878194



11717568



11913433



14139339

Rectangle

The Rectangle color scheme consists of four colors that form a rectangle on the color wheel.



13878194



12634293



11913433



13288150

Sweetspot

The Sweet Spot groups the original color and five complimentary colors.



13878194



16775666



13873859



8420472



0



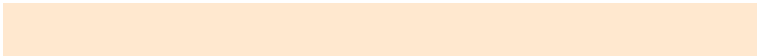
8421504

Same Dimension

The Same Dimension uses a secret algorithm to generate beautiful new colors.



13878194



16771279



13882290



6906718



11032320



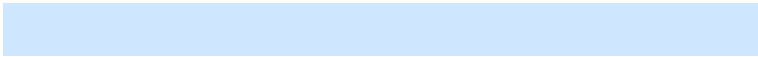
2692352

Inverse Universe

The Inverse Universe completely reimagines the original color for something new.



11715283



13625087



11711187



6185833



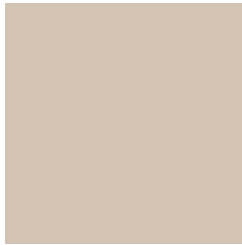
21160



5161

Previews

White Background



This preview shows how the Decimal color 13878194 looks on a white background.

Color Contrast Check

Large Text (above 18pt) WCAG AA × Fail

Any Text WCAG AA × Fail

Large Text (above 18pt) WCAG AAA × Fail

Any Text WCAG AAA × Fail

Black Background



This preview shows how the Decimal color 13878194 looks on a black background.

Color Contrast Check

Large Text (above 18pt) WCAG AA ✓ Pass

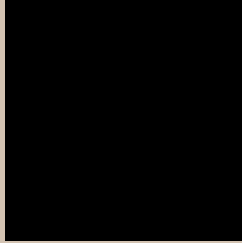
Any Text WCAG AA ✓ Pass

Large Text (above 18pt) WCAG AAA ✓ Pass

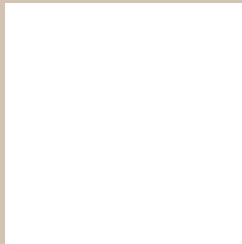
Any Text WCAG AAA ✓ Pass

If you want to check with other color combinations, try the [Color Contrast Checker](#).

Decimal 13878194 Background



This preview shows how black text looks on a background with the Decimal color 13878194.




This preview shows how white text looks on a background with the Decimal color 13878194.

Color Blindness Simulation

Color vision deficiency is a very complex topic, and I could not describe the different causes any better than Wikipedia does, so if you want to learn more, you should check out their [article about color blindness](#).

Dichromacy





Tritanopia
14139342

Trichromacy



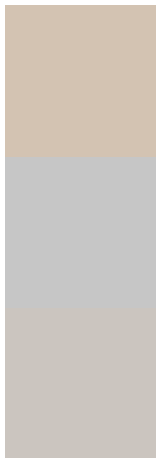
Original Color
13878194

Protanomaly
13616307

Deuteranomaly
14401715

Tritanomaly
14074052

Monochromacy



Original Color
13878194

Achromatopsia
13027014

Achromatomaly
13354431

CSS Examples

Text

The CSS property to change the color of the text to Decimal 13878194 is called "color". The color property can be set on classes, ids or directly on the HTML element.

This example shows how text in the color #D3C3B2 looks like.

```
.text, #text, p{  
  color:#D3C3B2  
}
```

If you want to add a text shadow in that color use the text-shadow property, you can generate a text shadow directly with our [CSS Text Shadow Generator](#).

Here you see how black text with a 4 pixel #D3C3B2 colored shadow looks like.

```
.shadow{ text-shadow: 4px 4px 2px #D3C3B2
}
```

Border

The CSS property to change the border of an element to Decimal 13878194 is called "border". The border property can be set on classes, ids or directly on the HTML element.

This example shows the color as border, it can be applied via the CSS property "border" or "border-color".

```
.border, #border, table{ border:4px solid
#D3C3B2 }
```

If only the border color should be changed use the property `border-color`.

```
.border{ border-color:#D3C3B2 }
```

If you want to add a box shadow in that color use:

Here you see how a box with a 4 pixel #D3C3B2 colored shadow looks like.

```
.boxshadow{ -moz-box-shadow:4px 4px 4px  
4px #D3C3B2; -webkit-box-shadow:4px 4px  
4px 4px #D3C3B2; box-shadow:4px 4px 4px  
4px #D3C3B2 }
```

Background

The CSS property to change the background color of an element to Decimal 13878194 is called "background". The background property can be set on classes, ids or directly on the HTML element.

```
.background, #background, body{  
background:#D3C3B2 }
```

If only the background color should be changed can be used:

```
.background{ background-color:#D3C3B2 }
```

This example shows the color as background, it is applied via the CSS property "background".

To optimize and compress your CSS code, you can use our [online CSS compressor and optimizer](#) based on csstidy. If you want to create a linear or radial gradient as background or border, check our [CSS Gradient Generator](#).

Hey! You found this booklet interesting? Support Converting Colors with the new Membership Option!

The pro membership hides all ads, plus gives you double the colors in the color bucket, and more awesome pro features!

[Learn more, Memberships starting at \\$2.50/m!](#)

**Follow me
on Twitter!**

@ConvertingColor