

Converting Colors

Decimal(13916809)

Have a look what the booklet for
Decimal(13916809) contains.

| | |
|--|----|
| Decimal(13916809) | 3 |
| <i>Conversions</i> | 4 |
| <i>Details</i> | 6 |
| <i>Harmonies</i> | 11 |
| <i>Previews</i> | 23 |
| <i>Color Blindness Simulation</i> | 26 |
| <i>CSS Examples</i> | 29 |

Color

Decimal(13916809)

Conversions

Conversions Part 1

| Format | Color |
|---------------|----------------------------|
| Hex | D45A89 |
| RGB | 212, 90, 137 |
| RGB Percent | 83%, 35%, 54% |
| CMY | 0.1686, 0.6471, 0.4627 |
| CMYK | 0.00, 0.58, 0.35, 0.17 |
| HSL | 337°, 59%, 59% |
| HSV | 337°, 58%, 83% |
| XYZ | 35.3229, 23.1155, 26.2669 |
| YIQ | 131.8360, 57.6250, 40.4810 |

Conversions

Conversions Part 2

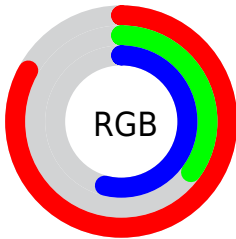
| Format | Color |
|-------------------------------------|------------------------------|
| R_{YB} | 212, 90, 137 |
| Decimal | 13916809 |
| CIE Lab | 55.19, 52.62, -1.76 |
| CIE LCh | 55, 52.652, 358.085 |
| Yxy | 23.1155, 0.4170, 0.2729 |
| Android (android.graphics.Color) | 4292106889 (0xFFD45A89) |
| YUV | 131.8360, 2.5459, 70.3038 |
| Hunter-Lab | 48.0786, 47.0047, 1.2629 |

Details

The Decimal color **13916809** is a dark color, and the websafe version is hex **CC6699**. The color can be described as middle muted rose. A complement of this color would be **5952677**, and the grayscale version is **8684676**.

A 20% lighter version of the original color is **16748990**, and **10101079** is the 20% darker color. If you saturate the color by 10%, you get **13911420**, and if you desaturate by 10%, it is **13922198**.

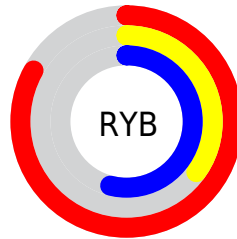
Distribution



Red (83%)

Green (35%)

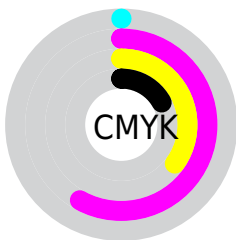
Blue (54%)



Red (83%)

Yellow (35%)

Blue (54%)

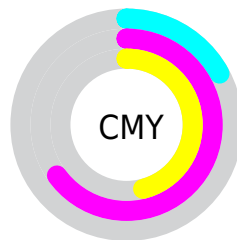


Cyan (0%)

Magenta (58%)

Yellow (35%)

Black (17%)



Cyan (17%)

Magenta (65%)

Yellow (46%)

Brightness & Saturation Gradients

These gradients show how the Decimal color 13916809 changes by changing the brightness by 10 percent. The first figure shows a shift by +10% for each color and the second figure -10%.

Similar to the brightness gradients but the following saturation gradients show a change of the Decimal color 13916809 by changing the saturation by 10% instead.

 13916809  13916809

16777215  12009328

 16748990  10101079

 16756186  8192064


 16763383  6357034

 16770815  4587542

 2883585

 0

 13916809  13916809

 13911420  13922198

 13906031

 13927587

 13900386

 13933232

 13894997

 13938621

 13893714

 13944010

 13949399

 13954788

 13959153

 13959166

Harmonies

Analogous

The Analogous color harmony consists of three colors that are next to each other on the color wheel.



12150453



13916809



13983580

Triad

The Triadic color harmony groups three colors that are evenly spaced from another and form a triangle on the color wheel.



13916809



7507501



38353

Complementary

The Complementary color scheme is a pair of colors which are on the opposite of each other on the color wheel.



13916809



5952677

Split Complementary

Split-complementary colors differ from the complementary color scheme. The scheme consists of three colors, the original color and two neighbors of the complement color.



39598



13916809



3249746

Square

The Square scheme is like the rectangle color scheme, but the four colors are evenly spaced on the color wheel.



13916809



10453281



39552



35551

Rectangle

The Rectangle color scheme consists of four colors that form a rectangle on the color wheel.



13916809



13265218



39552



38855

Sweetspot

The Sweet Spot groups the original color and five complimentary colors.



13916809



16766180



10705620



8414832



0



8421504

Same Dimension

The Same Dimension uses a secret algorithm to generate beautiful new colors.



13916809



16732051



13919834



7037029



11206722



2818065

Inverse Universe

The Inverse Universe completely reimagines the original color for something new.



13916809



16732051



5949652



7037029



11206722



2818065

Previews

White Background



This preview shows how the Decimal color 13916809 looks on a white background.

Color Contrast Check

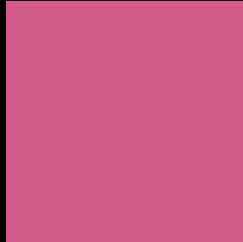
Large Text (above 18pt) WCAG AA ✓ Pass

Any Text WCAG AA × Fail

Large Text (above 18pt) WCAG AAA × Fail

Any Text WCAG AAA × Fail

Black Background



This preview shows how the Decimal color 13916809 looks on a black background.

Color Contrast Check

Large Text (above 18pt) WCAG AA ✓ Pass

Any Text WCAG AA ✓ Pass

Large Text (above 18pt) WCAG AAA ✓ Pass

Any Text WCAG AAA × Fail

If you want to check with other color combinations, try the [Color Contrast Checker](#).

Decimal 13916809 Background



This preview shows how black text looks on a background with the Decimal color 13916809.



This preview shows how white text looks on a background with the Decimal color 13916809.

Color Blindness Simulation

Color vision deficiency is a very complex topic, and I could not describe the different causes any better than Wikipedia does, so if you want to learn more, you should check out their [article about color blindness](#).

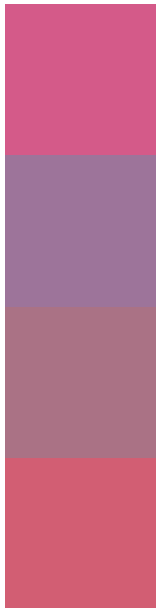
Dichromacy





Tritanopia
13721959

Trichromacy



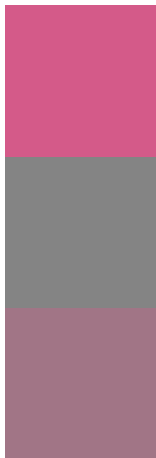
Original Color
13916809

Protanomaly
10319002

Deuteranomaly
11170437

Tritanomaly
13786739

Monochromacy



Original Color
13916809

Achromatopsia
8684676

Achromatomaly
10581382

CSS Examples

Text

The CSS property to change the color of the text to Decimal 13916809 is called "color". The color property can be set on classes, ids or directly on the HTML element.

This example shows how text in the color #D45A89 looks like.

```
.text, #text, p{  
  color:#D45A89  
}
```

If you want to add a text shadow in that color use the text-shadow property, you can generate a text shadow directly with our [CSS Text Shadow Generator](#).

Here you see how black text with a 4 pixel #D45A89 colored shadow looks like.

```
.shadow{ text-shadow: 4px 4px 2px #D45A89
}
```

Border

The CSS property to change the border of an element to Decimal 13916809 is called "border". The border property can be set on classes, ids or directly on the HTML element.

This example shows the color as border, it can be applied via the CSS property "border" or "border-color".

```
.border, #border, table{ border:4px solid
#D45A89 }
```

If only the border color should be changed use the property `border-color`.

```
.border{ border-color:#D45A89 }
```

If you want to add a box shadow in that color use:

Here you see how a box with a 4 pixel #D45A89 colored shadow looks like.

```
.boxshadow{ -moz-box-shadow:4px 4px 4px  
4px #D45A89; -webkit-box-shadow:4px 4px  
4px 4px #D45A89; box-shadow:4px 4px 4px  
4px #D45A89 }
```

Background

The CSS property to change the background color of an element to Decimal 13916809 is called "background". The background property can be set on classes, ids or directly on the HTML element.

```
.background, #background, body{  
background:#D45A89 }
```

If only the background color should be changed can be used:

```
.background{ background-color:#D45A89 }
```

This example shows the color as background, it is applied via the CSS property "background".

To optimize and compress your CSS code, you can use our [online CSS compressor and optimizer](#) based on csstidy. If you want to create a linear or radial gradient as background or border, check our [CSS Gradient Generator](#).

Hey! You found this booklet interesting? Support Converting Colors with the new Membership Option!

The pro membership hides all ads, plus gives you double the colors in the color bucket, and more awesome pro features!

[Learn more, Memberships starting at \\$2.50/m!](#)

**Follow me
on Twitter!**

@ConvertingColor