

Converting Colors

Decimal(13924759)

Have a look what the booklet for
Decimal(13924759) contains.

Decimal(13924759)	3
<i>Conversions</i>	4
<i>Details</i>	6
<i>Harmonies</i>	11
<i>Previews</i>	23
<i>Color Blindness Simulation</i>	26
<i>CSS Examples</i>	29

Color

Decimal(13924759)

Conversions

Conversions Part 1

Format	Color
Hex	D47997
RGB	212, 121, 151
RGB Percent	83%, 47%, 59%
CMY	0.1686, 0.5255, 0.4078
CMYK	0.00, 0.43, 0.29, 0.17
HSL	340°, 51%, 65%
HSV	340°, 43%, 83%
XYZ	39.5747, 29.9062, 32.9648
YIQ	151.6290, 44.6060, 28.6220

Conversions

Conversions Part 2

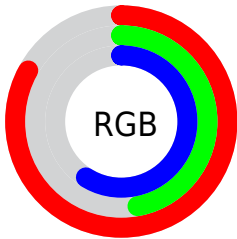
Format	Color
R _Y B	212, 121, 151
Decimal	13924759
CIE Lab	61.57, 38.99, -0.55
CIE LCh	62, 38.998, 359.194
Yxy	29.9062, 0.3863, 0.2919
Android (android.graphics.Color)	4292114839 (0xFFD47997)
YUV	151.6290, -0.3101, 52.9454
Hunter-Lab	54.6865, 33.4726, 2.5408

Details

The Decimal color **13924759** is a light color, and the websafe version is hex **CC6699**. A complement of this color would be **7984310**, and the grayscale version is **10000536**.

A 20% lighter version of the original color is **16756685**, and **10176100** is the 20% darker color. If you saturate the color by 10%, you get **13919369**, and if you desaturate by 10%, it is **13930149**.

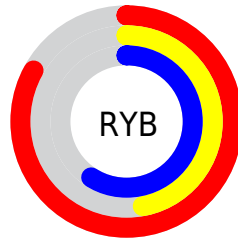
Distribution



Red (83%)

Green (47%)

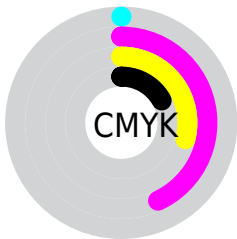
Blue (59%)



Red (83%)

Yellow (47%)

Blue (59%)

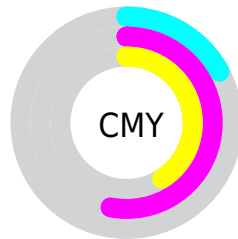


Cyan (0%)

Magenta (43%)

Yellow (29%)

Black (17%)



Cyan (17%)

Magenta (53%)

Yellow (41%)

Brightness & Saturation Gradients

These gradients show how the Decimal color 13924759 changes by changing the brightness by 10 percent. The first figure shows a shift by +10% for each color and the second figure -10%.

Similar to the brightness gradients but the following saturation gradients show a change of the Decimal color 13924759 by changing the saturation by 10% instead.

 13924759

 13924759

16777215

 12017533

 16756685

 10176100

 16763881

 8334412

 16771071

 6558006

 4849697

 3342345

 458752

 0

 13924759

 13924759

13919369

13930149

13913979

13935539

13908332

13941186

13902942

13946576

13897552

13951966

13893702

13957356

13959162

13959167

Harmonies

Analogous

The Analogous color harmony consists of three colors that are next to each other on the color wheel.



12550329



13924759



14056565

Triad

The Triadic color harmony groups three colors that are evenly spaced from another and form a triangle on the color wheel.



13924759



8953175



41423

Complementary

The Complementary color scheme is a pair of colors which are on the opposite of each other on the color wheel.



13924759



7984310

Split Complementary

Split-complementary colors differ from the complementary color scheme. The scheme consists of three colors, the original color and two neighbors of the complement color.



42677



13924759



6202224

Square

The Square scheme is like the rectangle color scheme, but the four colors are evenly spaced on the color wheel.



13924759



11244111



2205587



6068441

Rectangle

The Rectangle color scheme consists of four colors that form a rectangle on the color wheel.



13924759



13468258



2205587



41928

Sweetspot

The Sweet Spot groups the original color and five complimentary colors.



13924759



16768745



11958740



8416114



0



8421504

Same Dimension

The Same Dimension uses a secret algorithm to generate beautiful new colors.



13924759



16743078



13928569



7037028



11206712



2818062

Inverse Universe

The Inverse Universe completely reimagines the original color for something new.



13924759



16743078



7980500



7037028



11206712



2818062

Previews

White Background



This preview shows how the Decimal color 13924759 looks on a white background.

Color Contrast Check

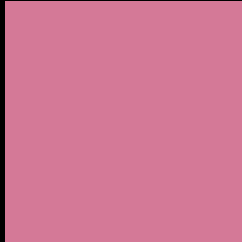
Large Text (above 18pt) WCAG AA ✓ Pass

Any Text WCAG AA ✗ Fail

Large Text (above 18pt) WCAG AAA ✗ Fail

Any Text WCAG AAA ✗ Fail

Black Background



This preview shows how the Decimal color 13924759 looks on a black background.

Color Contrast Check

Large Text (above 18pt) WCAG AA ✓ Pass

Any Text WCAG AA ✓ Pass

Large Text (above 18pt) WCAG AAA ✓ Pass

Any Text WCAG AAA × Fail

If you want to check with other color combinations, try the [Color Contrast Checker](#).

Decimal 13924759 Background



This preview shows how black text looks on a background with the Decimal color 13924759.



This preview shows how white text looks on a background with the Decimal color 13924759.

Color Blindness Simulation

Color vision deficiency is a very complex topic, and I could not describe the different causes any better than Wikipedia does, so if you want to learn more, you should check out their [article about color blindness](#).

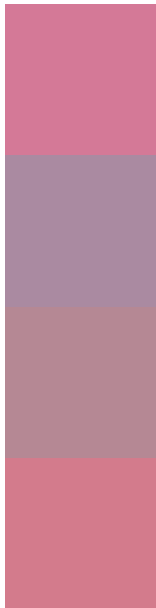
Dichromacy





Tritanopia
13794437

Trichromacy



Original Color
13924759

Protanomaly
11176609

Deuteranomaly
11896980

Tritanomaly
13859724

Monochromacy



Original Color
13924759

Achromatopsia
10000536

Achromatomaly
11439512

CSS Examples

Text

The CSS property to change the color of the text to Decimal 13924759 is called "color". The color property can be set on classes, ids or directly on the HTML element.

This example shows how text in the color #D47997 looks like.

```
.text, #text, p{  
    color:#D47997  
}
```

If you want to add a text shadow in that color use the text-shadow property, you can generate a text shadow directly with our [CSS Text Shadow Generator](#).

Here you see how black text with a 4 pixel #D47997 colored shadow looks like.

```
.shadow{ text-shadow: 4px 4px 2px #D47997
}
```

Border

The CSS property to change the border of an element to Decimal 13924759 is called "border". The border property can be set on classes, ids or directly on the HTML element.

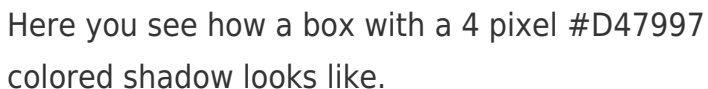
This example shows the color as border, it can be applied via the CSS property "border" or "border-color".

```
.border, #border, table{ border:4px solid
#D47997 }
```

If only the border color should be changed use the property `border-color`.

```
.border{ border-color:#D47997 }
```

If you want to add a box shadow in that color use:



Here you see how a box with a 4 pixel #D47997 colored shadow looks like.

```
.boxshadow{ -moz-box-shadow:4px 4px 4px  
4px #D47997; -webkit-box-shadow:4px 4px  
4px 4px #D47997; box-shadow:4px 4px 4px  
4px #D47997 }
```

Background

The CSS property to change the background color of an element to Decimal 13924759 is called "background". The background property can be set on classes, ids or directly on the HTML element.

```
.background, #background, body{  
background:#D47997 }
```

If only the background color should be changed can be used:

```
.background{ background-color:#D47997 }
```

This example shows the color as background, it is applied via the CSS property "background".

To optimize and compress your CSS code, you can use our [online CSS compressor and optimizer](#) based on csstidy. If you want to create a linear or radial gradient as background or border, check our [CSS Gradient Generator](#).

Hey! You found this booklet interesting? Support Converting Colors with the new Membership Option!

The pro membership hides all ads, plus gives you double the colors in the color bucket, and more awesome pro features!

[Learn more, Memberships starting at \\$2.50/m!](#)

**Follow me
on Twitter!**

@ConvertingColor